

12/2011 V-neck blouse

By: burda style magazine

<http://www.burdastyle.com/projects/122011-v-neck-blouse>

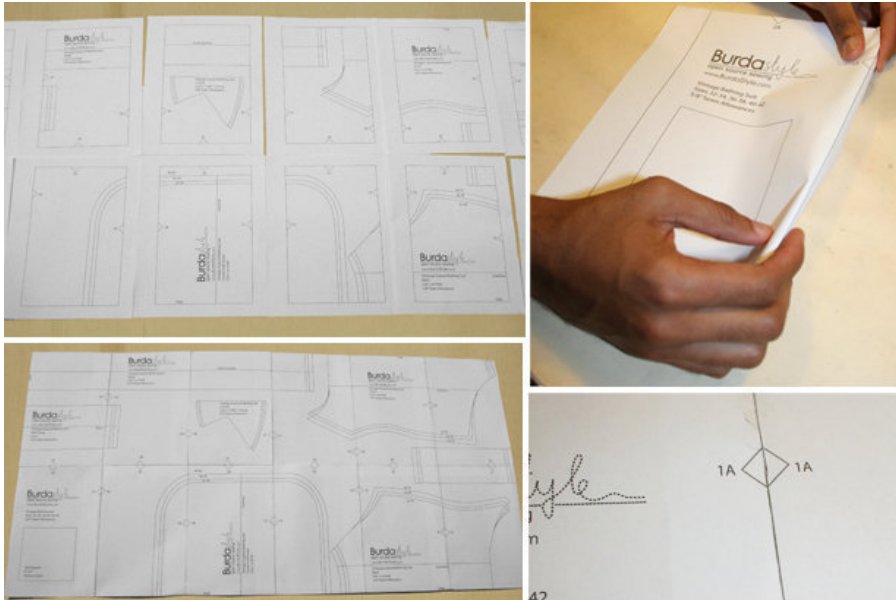


V-neck blouse burda style magazine patterns FAQ

Materials

Crpe de Chine

Step 1 — Preparation



Paper cut for ANSI A (German DIN A4) prints:

This pattern is printed on 8.5 × 11 sheets of plain paper. Do not scale or center pages before printing. Wait until all sheets are printed out before beginning to tape them together. **Do not cut out pattern pieces yet**— Arrange the sheets on a large, hard, flat surface so that they fit together, matching up like numbers and letters (i.e. 6A to 6A). To tape pattern together, fold under the margin of one piece (6A) and tape right against the line of it's matching number/letter (6A).

burda style magazine pattern do not have seam allowance included.

Seam and hem allowances to be added: Seams and edges 1.5 cm (5/8 in).

Step 2 — Cutting out



Beige fabric:

1upper front 2x

2upper back, on a fold 1x

5lower front, on a fold 2x

6lower back, on a fold 2x

7sleeve 2x

a) bias strip for back neck edge, 22 $\hat{=}$ 22 $\hat{=}$ 23 $\hat{=}$ 23 $\hat{=}$ 24 cm (83/4 $\hat{=}$ 83/4 $\hat{=}$ 91/8 $\hat{=}$ 91/8 $\hat{=}$ 91/2 ins) long, 4 cm (15/8 ins) wide (incl. allowances),

b) 2 bias binding strips for sleeve vents, 17 cm (63/4 ins) long, 2.5 cm (1 in) wide (incl. allowances),

c) 2 cuffs, 24 $\hat{=}$ 24.5 $\hat{=}$ 25 $\hat{=}$ 25.5 $\hat{=}$ 26 cm (91/2 $\hat{=}$ 93/4 $\hat{=}$ 97/8 $\hat{=}$ 10 $\hat{=}$ 101/4 ins) long, 16 cm (61/2 ins) wide, finished width 8 cm (31/4 ins).

Black fabric:

3front middle piece, on a fold 2x

4back middle piece, on a fold 2x

Interfacing: See pattern layout. Interface outer middle pieces. On upper front and back, iron strips of interfacing, 2 cm (3/4 in) wide, to wrong side of fabric, along zip slit edges.

Step 3 — Tucks

Fold upper fronts and upper back on marked tuck fold lines, with wrong side facing in. Topstitch as marked. On front, press tucks toward the side. On back, begin at centre back and press pleats toward each side.

Step 4 — Neck

On front neck edges, press facing to inside on marked fold line and baste to upper and lower edges.

Step 5 — Shoulder seams

Stitch shoulder seams — at neck edge, allowance of the back extends.

Step 6 — Back neck edge

Fold bias strip for back neck edge lengthwise, right side facing out, and press. Pin folded bias strip to back neck edge so that fold edge of strip lies on garment piece 7 mm (1/4 in) past seam line. Stitch along seam line. Trim seam allowances. Turn bias strip up and turn ends in. Turn bias strip to inside. Topstitch 5 mm (3/16 in) from back neck edge.

Step 7 — Side seams

Stitch right side seam on upper front and back.

Step 8 — Lower front

On lower front pieces, fold inverted pleat in direction of arrow and baste to upper edge. Stitch right side seam on each of the lower front and back units. Lay lower front and back units together, with wrong side facing right side. Baste together along upper edges and side edges, up to marked end of slit.

Step 9 — Lower edges

Gather lower edges of upper front pieces and of upper back and also gather upper edges of lower front and back between asterisks.

Step 10 — Middle pieces

Baste front and back middle pieces each together, with wrong side facing right side. Treat these pieces each as one layer of fabric from now on. On top point of front middle piece, fold seam allowance down and press.

Step 11 — Middle

Stitch right side seam of middle unit. Stitch middle unit to upper fronts and upper back — upper front pieces meet at centre front. Stitch middle unit to lower front and back, clipping seam allowance of middle unit at centre front. Press seam allowances onto middle unit. Use buttonhole thread in a contrasting colour to hand sew running stitches, approx. 5 mm (3/16 in) long, on middle unit, 7 mm (1/4 in) from joining seam.

Step 12 — Zip

Sew invisible zip to left opening edges, between slit marks. Stitch left side seam from armhole to zip. Clip seam allowances of upper fabric layer at bottom end of slit. Stitch the left side seam on each fabric layer separately, from hem edge to zip.

Step 13 — Sleeve vents

Slash sleeve vents as marked. Spread slash edges open to a straight line and stitch to one lengthwise edge of the binding strip, as narrowly as possible. Press binding strip over joining seam into sleeve vent, turn in to a width of 5 mm (3/16 in), and sew in place inside

BurdaStyle

12/2011 V-neck blouse