

burda style magazine 02/2010 Low-back dress

By: burda style magazine

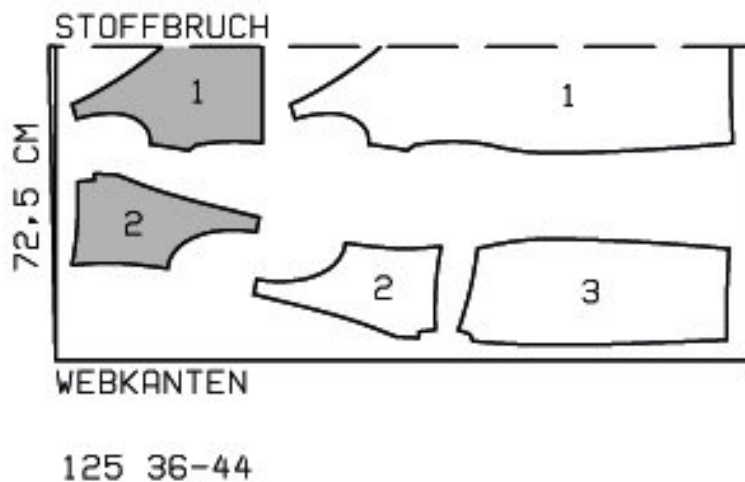
<http://www.burdastyle.com/projects/burda-style-magazine-022010-1>

Low-back dress For more information on this and other burda style magazine patterns, please see this dedicated blog post.

Materials

Cotton satin with crosswise stretch

Step 1 — Preparation

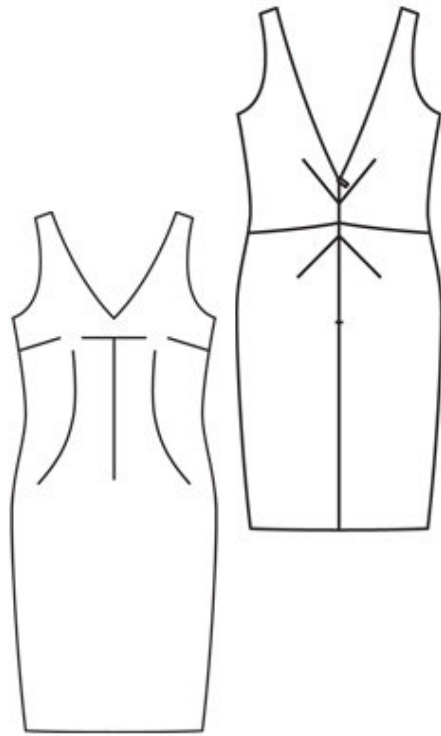


Trace the pattern pieces from the pattern sheet. Trace the front facing from piece 1 as a separate pattern piece.

Seam and hem allowances:

Seams and edges 1.5 cm (5/8 in), hem 4 cm (15/8 ins).

Step 2 — Cutting Out



1 front, on a fold 1x
â— front facing, on a fold 1x
2 upper back 2x
â— and as facing 2x
3 lower back 2x

Interfacing: See pattern layout. Iron interfacing onto facing pieces.

Step 3 — Darts

First stitch vertical dart at centre front on front, then stitch horizontal dart. Press vertical dart to one side, press horizontal dart up. Stitch bust darts, press down. Stitch curved darts, press to centre. Stitch darts in front facing.

Step 4 — Darts

Stitch darts in upper and lower back pieces, press darts up. Stitch darts in back facings.

Step 5 — Stitching back pieces

Stitch upper backs to lower back pieces. Press seam allowances onto upper pieces.

Step 6 — Zipper

Sew invisible zip to back pieces, see the — Helpful Hint— on page 8. Stitch centre back seam from lower edge to zip.

Step 7 — Edges of neckline and shoulder seams

Pin facings right sides together with front and back pieces. Turn ends of facing back at zip opening about 5 mm (3/16 in) before marked seam line and pin to neckline. Lay allowances at opening edges of dress outward, pin in place over facing. Stitch along edges of neckline and armholes, beginning and ending 2 cm (3/4 in) below shoulder seam lines. Trim seam allowances, clip close to stitching at centre front and along curves. Turn facing to inside on back (not on front). Lay allowances at opening edges to inside. Insert back shoulder edges between the as yet unturned front shoulder edges, right fabric sides of front and back and of facings lie together. Stitch shoulder seams of dress and facing. Pull back piece lying inside and back facing slightly out and up, press the seam allowances open. This will be easier if you slip the handle of a wooden spoon under the seams. Then stitch remaining opening edges together. Pull backs down out of shoulder edges of front and the front facing will turn itself to the inside. Press edges.

Step 8 — Facings

Lay facings at armholes up again. Stitch side seams of dress and go on to stitch side seams of facing. Lay facings to inside again. Sew facings to zip tapes in back. Work from right side to stitch lower edge of back facings in line of horizontal section seam. Sew lower edge of front facing on at darts.

Step 9 — Hem Allowances

Press hem allowance to inside, sew by hand.

BurdaStyle

burda style magazine 02/2010 Low-back dress