

# 4/2010 Slouchy Blouse

By: burda style magazine

<http://www.burdastyle.com/projects/42010-slouchy-blouse>

---

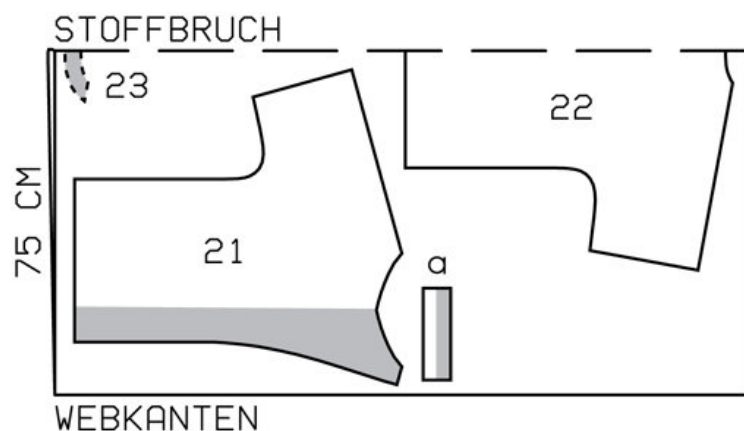
Slouchy Blouse burda style magazine patterns FAQ

## Materials

Batiste

---

## Step 1 — Preparation



102 36-44

Trace the pattern pieces from the pattern sheet.

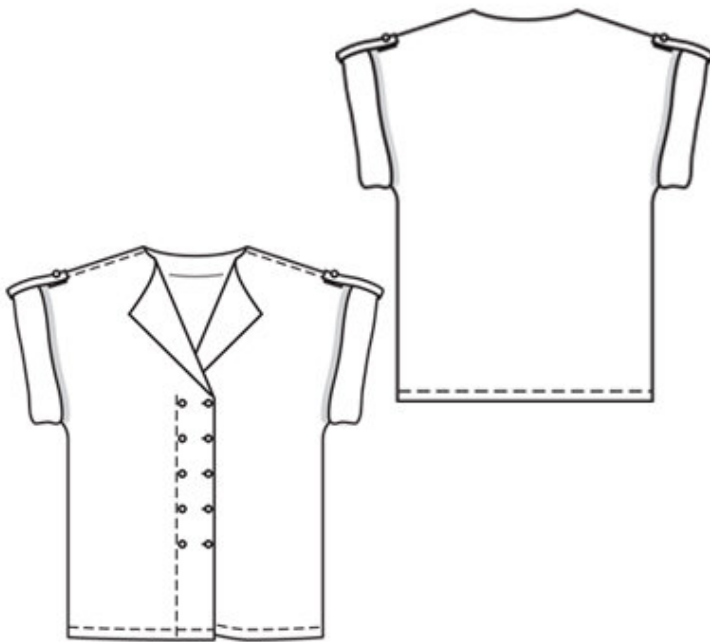
The markings for the tabs on pieces 21 and 22 are for size 36. Remark the tabs for the other sizes according to the size lines.

Seam and hem allowances:

Seams and edges 1.5 cm (5/8 in), hem 4 cm (15/8 ins), sleeve hems 1.5 — 2 cm (5/8 — 3/4 in).

---

## Step 2 — Cutting Out



21 front with integrated sleeve 2x

22 back with integrated sleeve,

â— on a fold 1x

23 back facing, on a fold 1x

a) 2 sleeve tabs, 20 cm (8 ins) long, 6 cm (2 1/2 ins) wide, finished width 3 cm (1 1/4 ins).

Interfacing: See pattern layout.

---

### **Step 3 — Stitch shoulder seams and top sleeve seams as flat-felled seams**

Stitch seam. Press seam allowances onto front. Trim lower allowance to 5 mm (3/16 in) wide. Turn in upper allowance and baste. Working from right side, stitch 7 mm (1/4 in) from -seam.

---

### **Step 4 — Sleeve tabs**

Fold sleeve tabs lengthwise, right side facing in. Stitch along lengthwise edge and across one end of each. Turn right side out. Topstitch tabs close to edges. Work one buttonhole in each tab, 1 cm (3/8 in) from faced end. Stitch tabs to wrong fabric side of sleeves, along joining line, so that tabs point up. Lay tabs down and press. On right fabric side, stitch ends of tabs in place with a square of stitching and crisscross. Sew a button, centred, over lines of stitching.

---

## **Step 5 — Side seams and sleeve seams**

Stitch side seams and underneath sleeve seams as continuous seams. Trim allowances to 7 mm (1/4 in) wide, neaten together, and press onto back.

---

## **Step 6 — Sleeve hem allowances**

Press sleeve hem allowances to inside, turn in, and stitch 1 cm (3/8 in) from edge.

---

## **Step 7 — Hem, self-facings, shoulder seams**

Press inner edge of hem allowance to inside, 1.8 cm (a scant 3/4 in) wide. Lay front self-facings outward and stitch to back facing. Stitch facing to neck edge and to hem. Trim seam allowances. Turn facing to inside and turn hem allowance to inside and baste. Press edges. Top-stitch 2 cm (3/4 in) from hem edge. Sew facing to shoulder seams. Topstitch right front as marked.

---

## **Step 8 — Buttonholes**

Work buttonholes in right front. Work top buttonhole in left front for inside button. Sew buttons in place, to match buttonholes and as marked.

---

**BurdaStyle**

4/2010 Slouchy Blouse