

Materials

Polka dot heavy cotton twill, single color cotton, trim, rod

Step 1

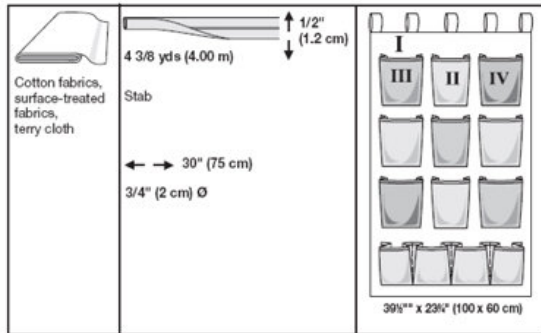
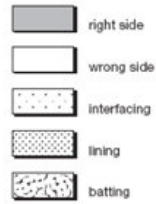
burda Download-Pattern Wall Organizer 8128C – Instructions

●●●● average

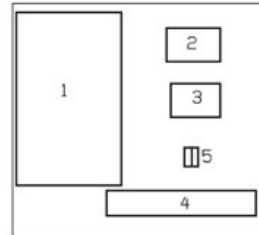
		45 ins / 114 cm	55 ins / 140 cm
I	yd/s	1 1/2 *	1 1/4 *
	m	1.30 *	1.05 *
II	yd/s	1	1
	m	0.90 →	0.90 →
III + IV each	yd/s	1/2	1/2
	m	0.40 →	0.40 →

→ with nap

* without nap



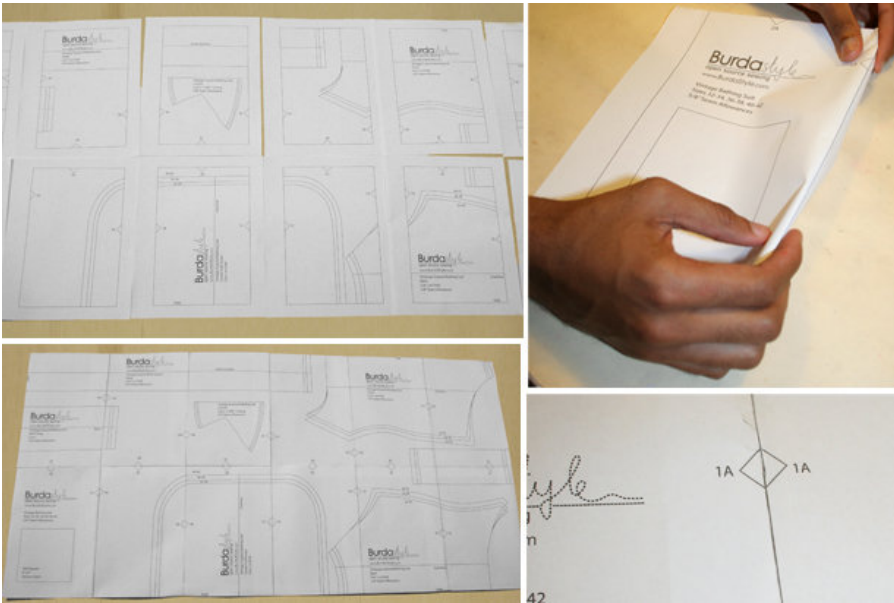
Patternpieces:



PATTERN

- 1 Wall organizer 2x
- 2 Lateral pocket 6x
- 3 Center pocket 3x
- 4 Lower pocket 1x
- 5 Loop 5x
- 6 Strap 1x

Step 2

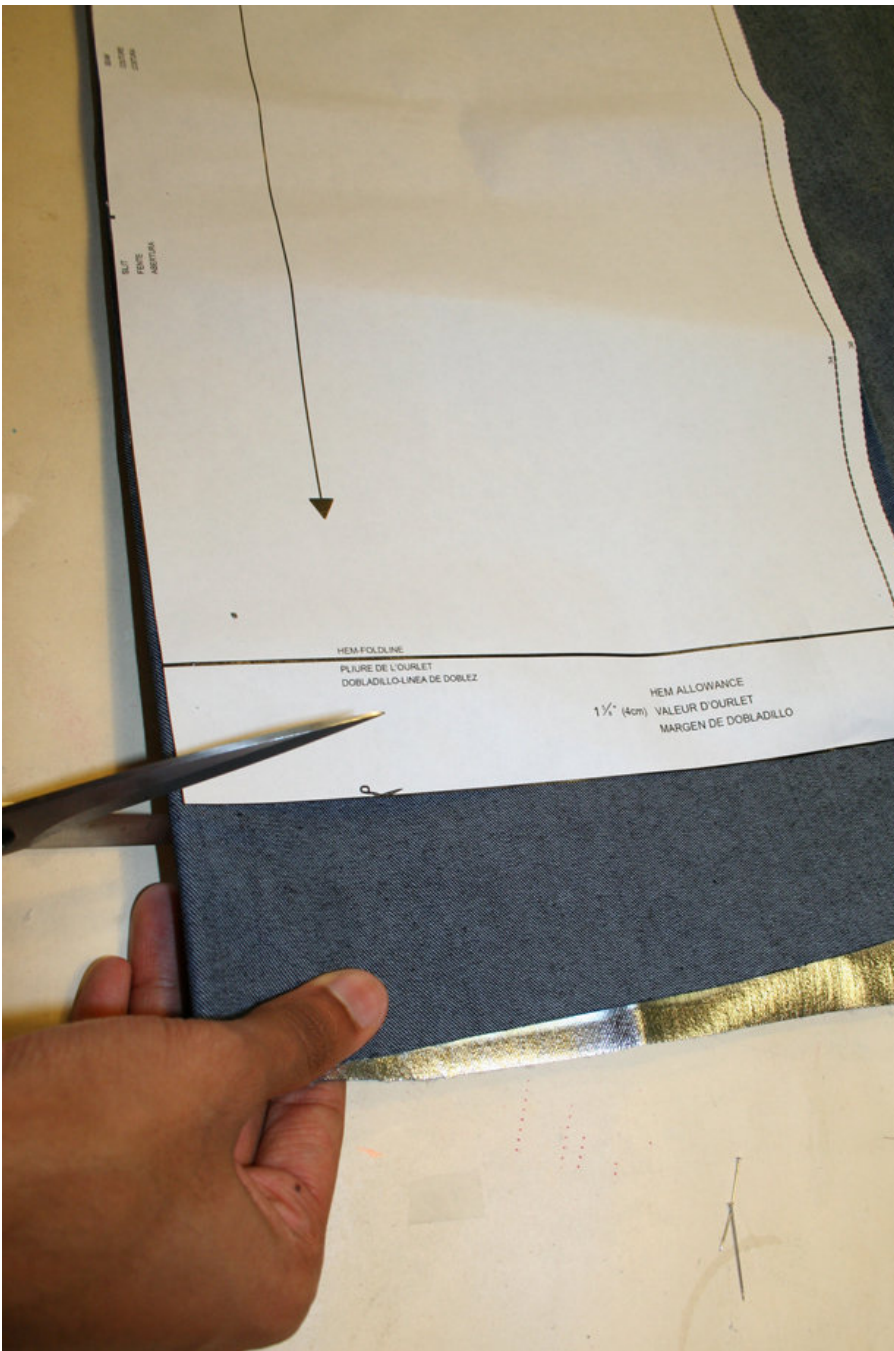


To print the patterns at home, follow the instructions:

Paper cut for ANSI A (German DIN A4) prints:

The patterns are printed out on 25 sheets with a thin frame. Wait until all sheets are printed out. Arrange the sheets so that they fit together (see additional page with the overview of the prints). Fold the single sheets on the upper and right edge along the thin frame lines. Begin with the left lower sheet and then tape the frame lines together precisely.

Step 3



CUTTING OUT

FOLD (— — — —) means: Cut on the fold, the fold being the center of the pattern piece, but never a cut edge or seam. The piece should be cut double, with the fold line forming the center line. Pattern pieces that are outlined with a broken line in the cutting diagrams are to be placed face down on the fabric. The cutting diagrams on the pattern sheet show how the pattern pieces should be placed on the fabric.

The cutting diagrams show the placement of the pattern on the fabric.

For a single layer of fabric, the pattern pieces are pinned to the right side. For double layers of fabric, the right sides are facing and the pattern pieces are pinned to the wrong side. The pattern pieces that are shown extending over the fold of the fabric in the cutting diagram should be cut last from a single layer of fabric .

Cut out the pieces 1 and 5 from fabric I (plain colored)
Cut out the pieces 2 (2x), 3 (2x) and 4 (1x) from fabric II (lengthwise striped)
Cut out the pieces 2 (2x) and piece 3 (1x) from fabric III (plaid)
Cut out the piece 2 (2x) from fabric IV (plaid)
Consider the different grains of the fabric for striped fabric and plaid fabric .

Step 4

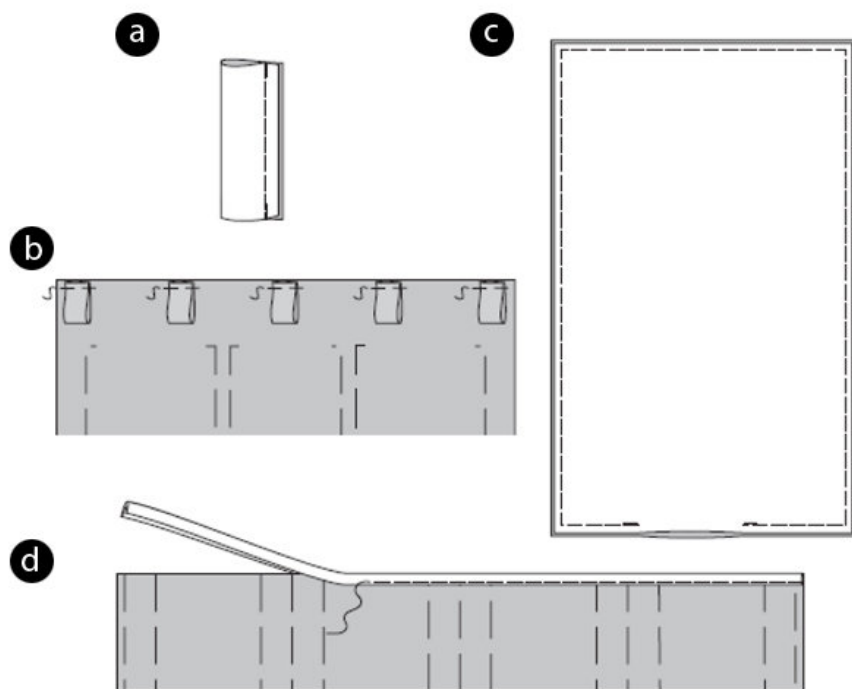
SEAM AND HEMLINE ALLOWANCES are included on an average:
1 5/8" (4 cm) for hem, 5/8" (1.5 cm) for all edges and stitches. Using BURDA copying paper, transfer the lines and signs of the pattern onto the wrong side of the fabric. Instructions can be found in the packaging.

Sewing

While sewing, the right sides of the fabric are facing.

Transfer all lines of the pattern onto the right side of the fabric using basting stitches.

Step 5



WALL ORGANIZER WITH POCKETS

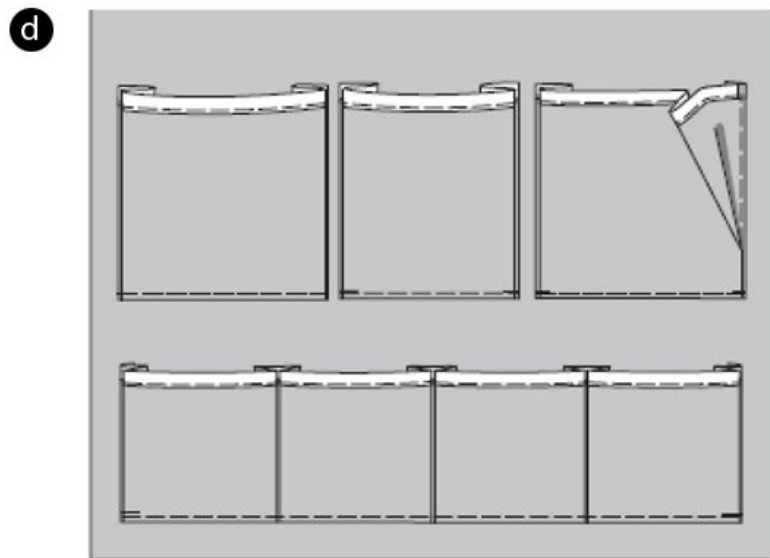
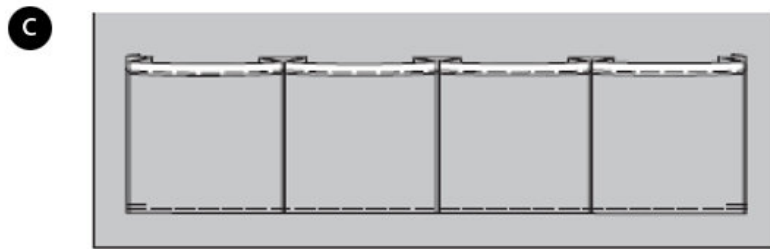
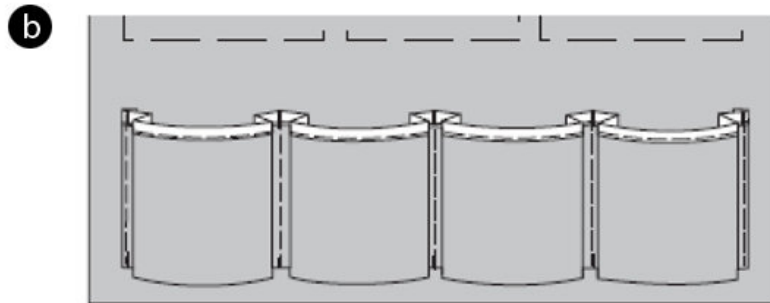
Fold the loops lengthwise, and stitch the long edges on top of each other. Turn the loops inside out and press. (a)

Fold the loops to a half and pin their open edges onto the wall hanging according to the drawing. (b)

Position the pattern pieces of the wall organizer the right sides facing, stitch the edges on top of each other, but allow an opening within the lower edge. Then turn the pieces inside out and stitch the opening. ©

Fold the band in half and insert the upper edge of the pocket into the fold of the band, then pin the folded band together with the pocket in between and stitch it. The rest of the pocket edges is then surged and the seam allowance pressed over. (d)

Step 6



Insert the pleats from the outside (arrows), press. Then set them up again. (a)

Pin the pocket onto the wall hanging, the lateral edges meet the marked lines, and the center of the pleats meet the marked stitch lines. (b) Stitch the pocket lengthwise. Close the pleats and stitch the lower pocket ©.

Trim the upper edges of all other pockets and press the pleats.

Pin the lateral and center pockets onto the wall hanging, and stitch. (d)

BurdaStyle

Tory