

07/2011 Lace Kimono

By: burda style magazine

<http://www.burdastyle.com/projects/072011-lace-kimono>



Lace Kimono burda style magazine patterns FAQ

Materials

Lace fabric with two scalloped edges

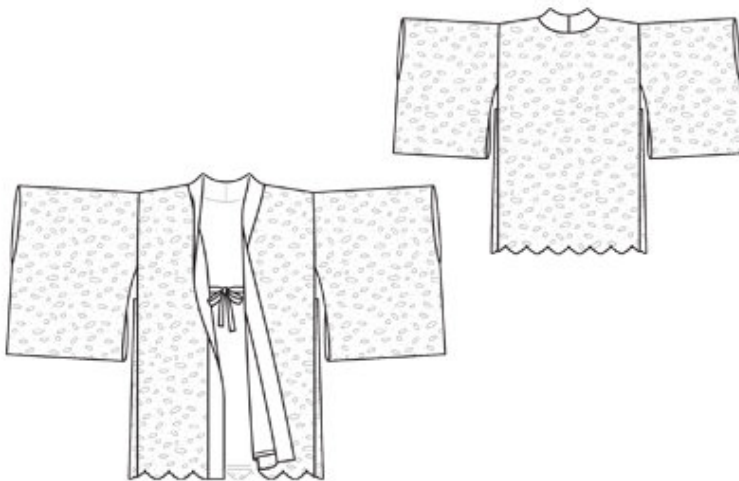
Step 1 — Preparation

Trace the pattern pieces from the pattern sheet.

Seam and hem allowances:

Seams and edges 1.5 cm (5/8 in). Cut lining pieces with 1.5 cm (5/8 in) seam allowance and 2 cm (3/4 in) hem allowance.

Step 2 — Cutting out



Lace fabric:

21 front 2x

22 back, on a fold 1x

23 side piece 2x

24 sleeve, on a fold 2x

Lay the hem edge of pattern pieces 21, 22 and 23 on the scalloped edge of the fabric. Position the pieces so the scallops will match at the sewn seams and at the hem.

Crpe satin:

pieces 21, 22 and 23 to lining line, and piece 24.

a) 2 band pieces, 98 — 99 — 100 — 101 — 102 cm (38 3/4 — 39 — 39 1/2 — 39 3/4 —

40 1/4 ins) long, 10 cm (4 ins) wide, finished width 5 cm (2 ins),
b) 2 tie bands, 33 cm (13 ins) long, 4 cm (1 5/8 ins) wide (incl. allowances).
Use the matte side of the crpe satin as the right side of the lining.
Interfacing: See pattern layout.

Step 3 — Lining

Press hem allowance on crpe satin pieces for fronts, sides and back toward shiny side of the fabric, turn in to a width of 1 cm (3/8 in), and stitch. Lay front lining pieces, shiny side down, on the the front pieces of lace fabric (right fabric side). Stitch side edges together between markings (seam number 1 to 4). Clip seam allowances at markings. Lay lining pieces under lace fabric pieces and press faced edges. Baste remaining edges together.

Step 4 — Front

Lay front pieces, lace fabric side facing down, on back lace piece. Pin shoulder seam edges together — back extends past side edges the width of the seam allowance. Lay back lining piece, shiny side down, over on these pieces. Stitch shoulder seams. Stitch side edges of back together between markings (seam number 2 to 4). Clip seam allowances at markings. Pull fronts down out of back and the back will turn itself right side out. Baste lining to wrong side of back.

Step 5 — Side pieces

Lay side pieces of lining, shiny side facing down, on side pieces of lace (right fabric side). Stitch narrow upper edges together. Lay lining pieces under pieces of lace fabric and press faced edges. Pin side pieces of lace fabric to side edges of fronts (lace fabric facing up). Turn side pieces of lining over upper edge, to inside, and pin to lining side of fronts. Stitch seams at sides. Trim seam allowances. Turn side pieces right side out. Stitch side pieces of lace fabric to side edges of back. Trim seam allowances and press onto side pieces. Turn in side pieces of lining, pin to seams on inside, and sew in place by hand.

Step 6 — Sleeve linings

Lay sleeve linings right sides together with sleeves of lace fabric. Stitch lower edges together between markings and stitch upper edges together, from each marking (seam number 4) to corner. Clip allowances at markings. Turn sleeves right side out and press edges. Baste fabric layers together on sleeve seam edges — not at joining edges. Stitch sleeves of lace fabric to jacket (between markings, seam number 4). Turn in sleeve linings and sew to joining seams. Sew fabric layers together at centre of sleeve (fabric fold line) with fine sewing thread — small stitches on lace fabric, larger stitches on lining side. Turn jacket lining side out. Fold each sleeve on fabric fold line, lace fabric side facing in. Stitch sleeve seams over corner. Neaten seam allowances together. Turn jacket lace side out.

Step 7 — Tie bands

Fold tie bands lengthwise, right side facing in. Stitch 1 cm (3/8 in) from fold edge and across one end each. Trim allowances. Turn bands right side out and press. Pin bands to front edges, between markings.

Step 8 — Band

Stitch centre back seam of band. Stitch outer half of band to fronts and to back. Press seam allowances of joining seam and of other long edge of band onto band. Fold band lengthwise, right side facing in. Stitch across ends. Turn right side out. Sew inside edge of band in place.

BurdaStyle

07/2011 Lace Kimono