

Carolina

By: burdastyle

<http://www.burdastyle.com/projects/carolina>



Roomy toiletry bag for all your travel necessities!

Materials

1/2 yards (.35 meters) striped fabric, 3/4 yards (.55 meters) lining and trim fabric, 1 X 14" zipper

Step 1

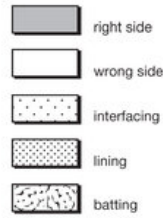
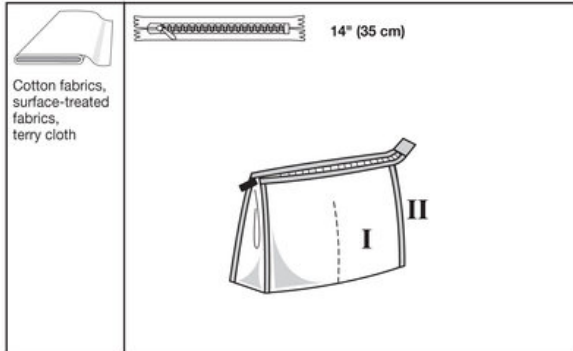
burda Download-Pattern Kulturbeutel 8128D – Instructions

●●●□
average

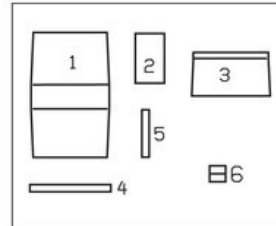
		45 ins / 114 cm	55 ins / 140 cm
I	yds	1/2	1/2
	m	0.35 *	0.35 *
II	yds	1/4	1/4
	m	0.55 →	0.55 →

→ with nap

* without nap



Patternpieces:



PATTERN

- 1 Center 1x
- 2 Side 2x
- 3 Inside pocket 1x
- 4 Bias tape (top) 2x
- 5 Bias tape (side) 2x
- 6 Placket 1x

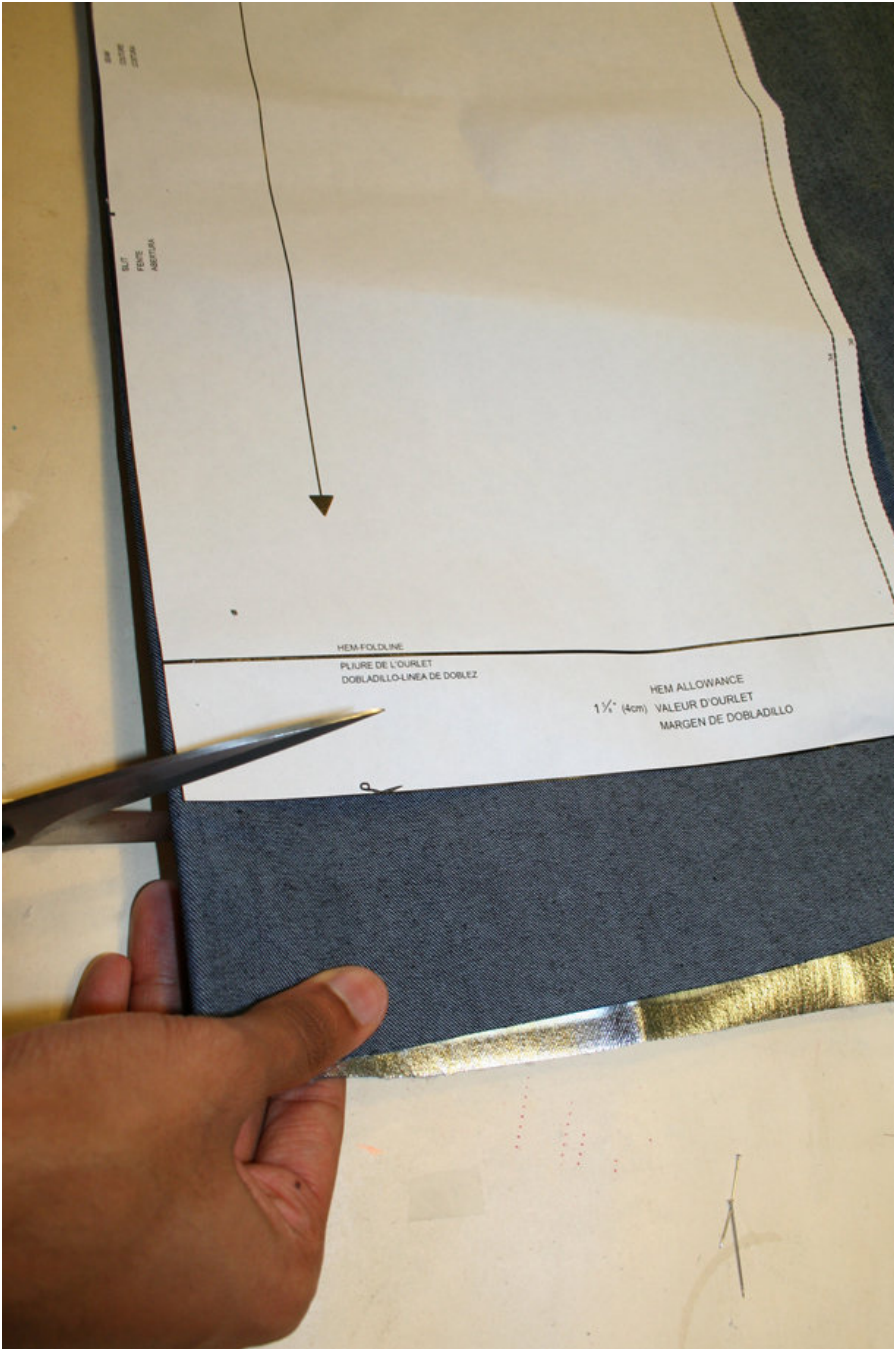
Step 2



The patterns can be printed out at the copy shop. If you decide to print them at home, follow the instructions:
 Paper cut for ANSI A (German DIN A4) prints:
 The patterns are printed out on 8 sheets with a thin frame. Wait until all sheets are printed out. Arrange the sheets so that they fit together (see additional page with the overview of the prints). Fold the single sheets on

the upper and right edge along the thin frame lines. Begin with the left lower sheet and then tape the frame lines together precisely.

Step 3



CUTTING OUT

FOLD () means: Cut on the fold, the fold being the center of the pattern piece, but never a cut edge or seam. The piece should be cut double, with the fold line forming the center line. Pattern pieces that are outlined with a broken line in the cutting diagrams are to be placed face down on the fabric. The cutting diagrams on the pattern sheet show how the pattern pieces should be placed on the fabric.

The cutting diagrams show the placement of the pattern on the fabric.

For a single layer of fabric, the pattern pieces are pinned to the right side. For double layers of fabric, the right sides are facing and the pattern pieces are pinned to the wrong side. The pattern pieces that are shown extending over the fold of the fabric in the cutting diagram should be cut last from a single layer of fabric .

Cut pieces 1 to 6 of fabric II (e.g., bias striped), piece 1 and 2 from fabric I (plain).

Step 4

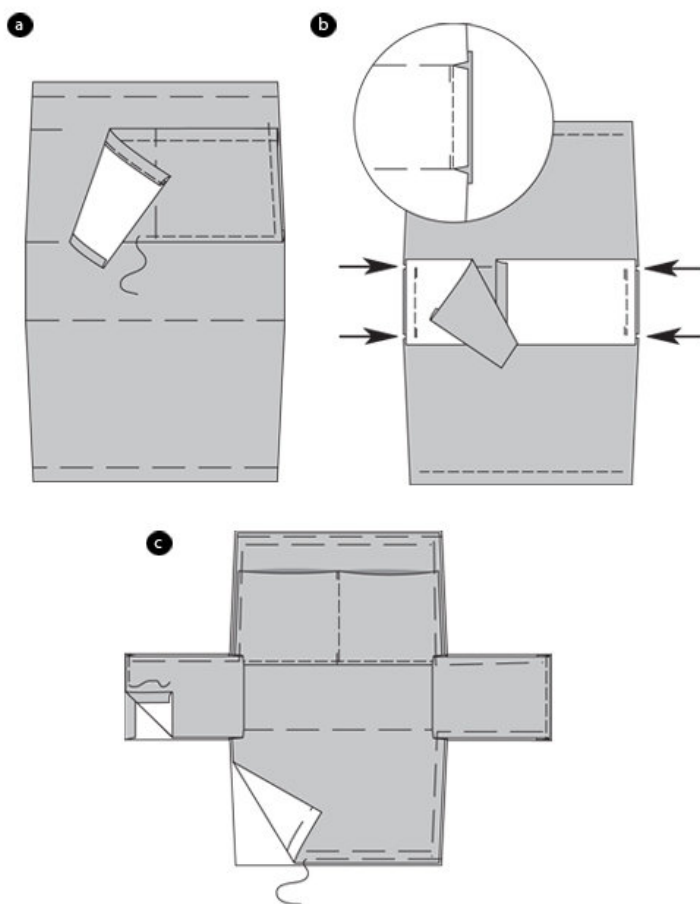
SEAM AND HEMLINE ALLOWANCES are included on an average:

1 5/8" (4 cm) for hem, 5/8" (1.5 cm) for all edges and stitches. Using BURDA copying paper, transfer the lines and signs of the pattern onto the wrong side of the fabric. Instructions can be found in the packaging.

SEWING

When sewing the wrong sides of fabric are facing. All edges are bound with bias trim.

Step 5



TOILETRY BAG

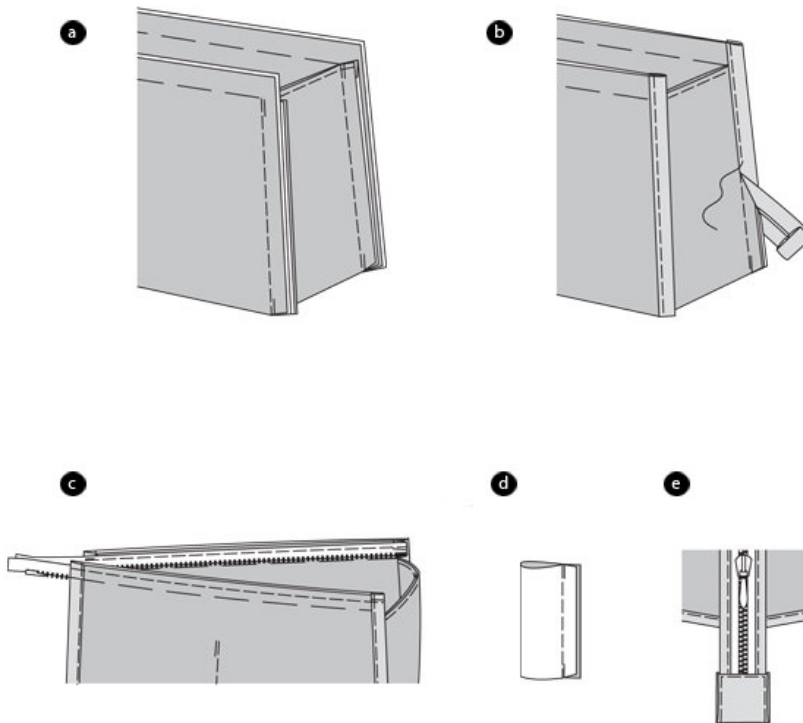
Inside pocket: Fold allowances of the upper edge inwards, stitch. Neaten lower edge, press. Baste pocket, touching the lines on the centerpiece (striped fabric). (a)

Side parts:

Press allowances of upper edges. Stitch lower edges, right sides facing, between the lines on the center piece (plain fabric). Cut allowances on the cross lines of the center piece (arrows). Also, stitch the inside of side pieces onto the inside of center piece (striped fabric). (b)

Baste inside and outside center pieces including side pieces facing left to left, one on top of the other. Stitch inside pocket on the lower edge onto pocket center. Stitch the upper edges of the side parts together narrowly. ©

Step 6



Lay side parts from seam 6 respectively 7 onto the center piece. Stitch seams. (a)

Enclose edges: Fold and press the long edges along the bias tapes and the end of the bias tapes inwards, about 3/10" (0.7 cm). Then press the tapes onto half of the width. Enclose the short tapes to the side pocket edges. Move pocket edge between the tape edges, until it touches the break line. The tape ends are facing down. Pin tape edges together, stitch. (b)

Open zipper and pin on the upper edges of the center piece, the little teeth touch the marked zipper line. Turn open tape ends, the closed zipper end overlaps. Stitch zipper tapes. Enclose upper edges of the center piece with the bias tapes, the zipper tapes included. From the end of the center piece continue enclosing the zipper tapes only. ©

Fold placket (piece 6) along, stitch long edges together. Turn placket, press. (d)

Fold half of placket, open edges inside. Lay placket around the overlapping zipper tape and stitch. (e)

BurdaStyle

Carolina