

# Malissa

By: burdastyle

<http://www.burdastyle.com/projects/malissa>

---



The Turtleneck Dress is the winning design of last years contest. We liked the versatility of this design and the fact that Malissa Long based it on the concept of developing a generic sweater design with turtleneck further. Our creation is made out of a fine rib knit. On the collar we attached a pattern of sequin in a

matching color. For this particular dress size 34 was used.

## Materials

rib knit

## Step 1

**burda Download-Pattern  
dress 6010 - Instructions**

● ● ● ●

**leicht**                      **sehr weit**

burda sizes	40 ins / 100 cm						55 ins / 140 cm							
	34	36	38	40	42	44	46	34	36	38	40	42	44	46
yds							2 1/2	2 1/2	2 1/2	2 1/2	2 1/2	2 1/2	2 1/2	2 1/2
m							2.15	2.15	2.15	2.40	2.40	2.40	2.40	2.40
Ribbed knit														
yds	1/4	1/4	1/4	1/4	1/4	1/4								
m	0,30	0,30	0,30	0,30	0,30	0,30								
	→	→	→	→	→	→								

→ with nap                      \* without nap

Jersey, leichte Strickstoffe, Sweatshirtstoffe; Kragen, Ärmelbündchen: Rippenstrickstoff

**right side** (grey box)

**wrong side** (white box)

**interfacing** (dotted box)

**lining** (cross-hatched box)

**batting** (stippled box)

**Patternpieces:**

## PATTERN

- 1 Front piece 1x
- 2 Back piece 1x
- 3 Sleeves 2x
- 4 Sleeve cuffs 2x
- 5 Collar 1x

Fabrics: Jersey , light knit, sweatshirt fabric

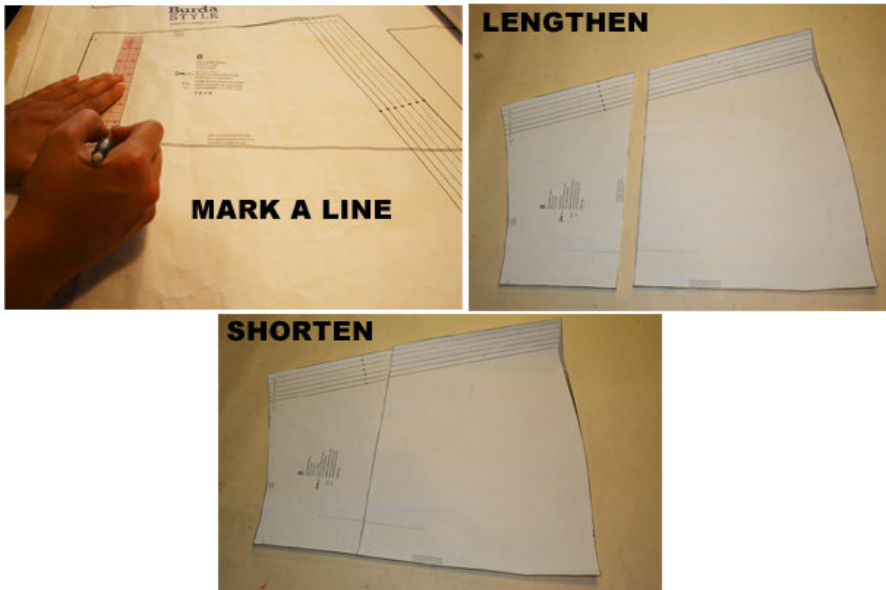
Collar / cuffs: rib knit fabric

## Step 2



The patterns can be printed out at the copy shop. If you decide to print them at home, follow the instructions: Paper cut for ANSI A (German DIN A4) prints: The patterns are printed out on 35 sheets with a thin frame. Wait, until all sheets are printed out. Arrange the sheets so that they fit together (see extra page with the overview of the prints). Cut off the single sheets on the upper and right edge along the thin frame lines. Begin with the left lower sheet and then glue the parts in the frame lines together precisely.

### Step 3



#### ADJUST PATTERN SIZES

Select your size according to the Burda-dimension table: Dresses, blouses, jackets and coats according to the bust size, trousers and skirts according to the hip width. Change the pattern if necessary, to fit your measurements if they deviate from the Burda-dimension table.

Cut out the pattern according to your size.

Refer to our "Adjust patterns for mixed sizes" technique

**LENGTHENING OR SHORTENING THE PATTERN PIECES ACCORDING TO YOUR SIZE** Our pattern is calculated for a height of 5â€ 6â€ (168 cm). If you are taller or shorter, you may adjust the pattern to fit your size. Choose your size at the lines marked “lengthen or shorten here”. Thus the proper fit is preserved. Make sure that you adjust all pieces of one pattern by the same amount at the same lines.

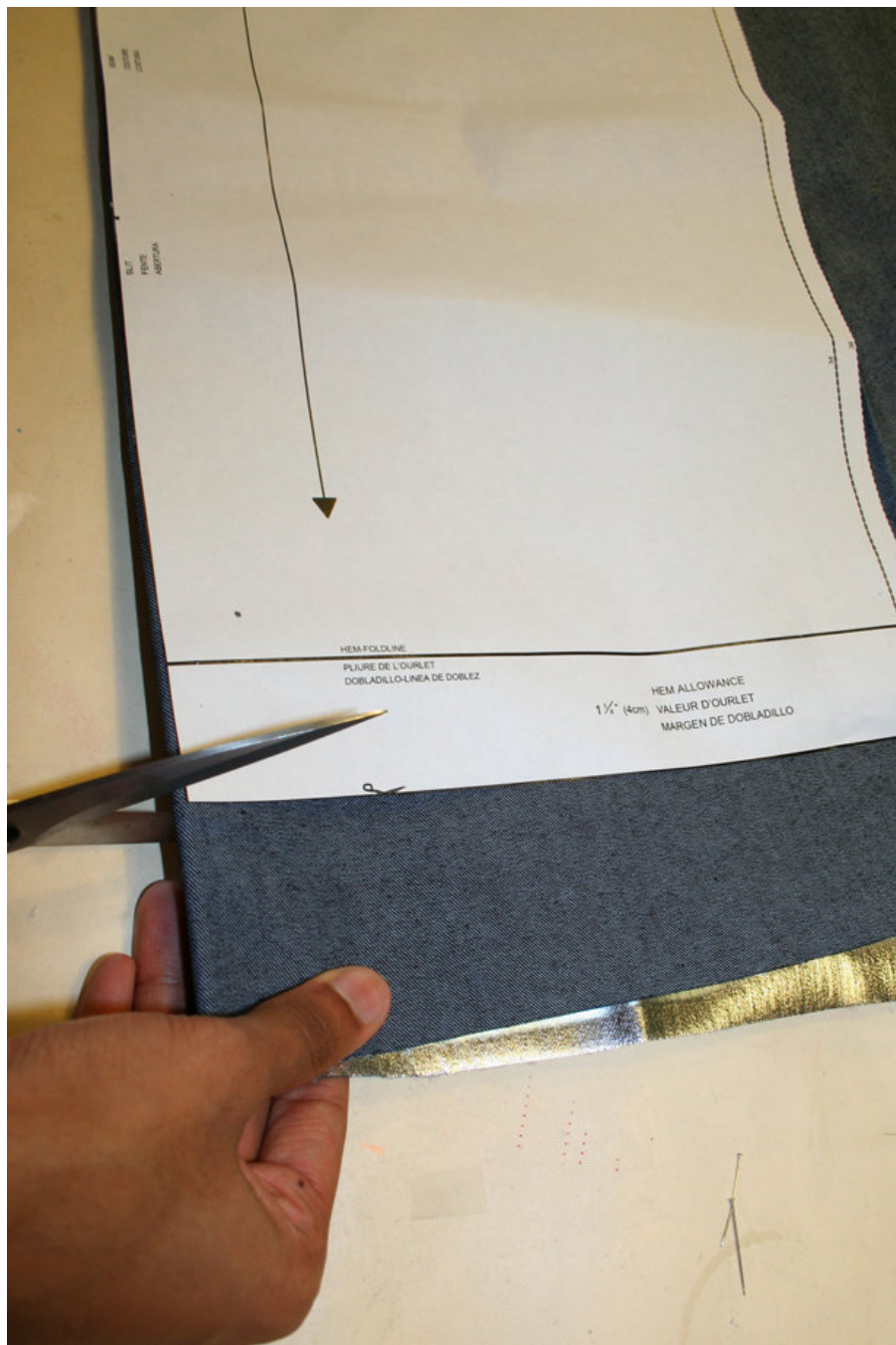
How to lengthen and shorten pattern pieces: Cut the pattern pieces along the marked lines.

To lengthen, slide the two halves of the pattern piece as far apart as necessary.

To shorten, overlap the two halves of the pattern piece as far as necessary. Even out the side edges.

---

## Step 4



**CUTTING OUT FOLD** ( ) means: here is the center of a pattern piece but never a cut edge or a seam. The piece should be cut double, with the fold line forming the centre line. Pattern pieces that are outlined with a broken line in the cutting diagrams are to be placed face down on the fabric. The cutting diagrams on the pattern sheet show how the pattern pieces should be placed on the fabric.

The cutting diagrams show the placement of the pattern on the fabric. For a single layer of fabric, the pattern pieces are pinned to the right side. For double layers of fabric, the right sides are facing and the pattern pieces are pinned to the left side. The pattern pieces that are shown in the cutting diagram, extending over the fold of the fabric, should be cut last from a single layer of fabric.

---

## Step 5

**SEAM AND HEMLINE ALLOWANCES** are included on an average: 5/8" (1.5 cm) for all edges and stitches.

Using burda copying paper; transfer the lines and signs of the pattern onto the left fabric side. You will find instructions in the packaging.

### Sewing

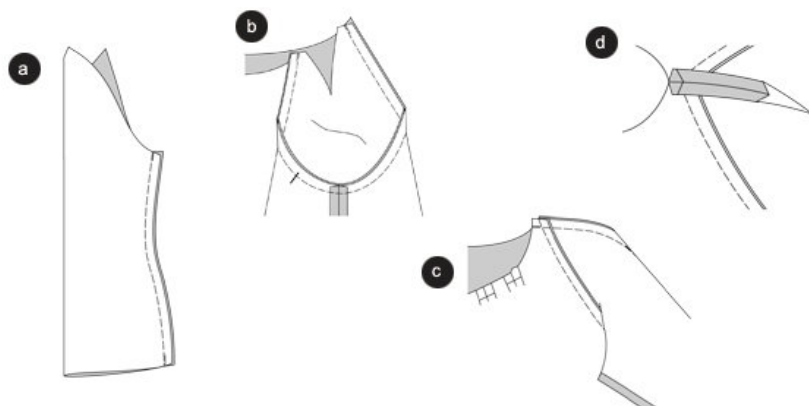
While sewing the right fabric sides are facing. Transfer all lines of the pattern onto the the right fabric side using basting stitches.

### Instruction for the use of stretchy fabrics

You will achieve the best results when working with stretchy fabrics by using an Overlock- sewing machine. The seams will come out very elastic and won't rip with everyday wear. If you don't have an Overlock sewing machine available, stitch the seams using a special elastic stitch or a narrowly adjusted zigzag stitch. Please beware that the thread tension should not be too tight. For delicate jersey fabrics use a jersey needle for your sewing machine. Its rounder point won't damage the fabrics.

---

## Step 6



### DRESS

#### Side seams

Position the front piece onto the back piece, the right sides are facing. Baste the side seams (seam 1) and stitch. Neaten allowances and press apart.

#### Sleeve seams

Fold the sleeves lengthwise, right side to the inside. Baste sleeve seams (seam 2) and stitch. Neaten allowances and press apart (a).

#### Apply sleeves

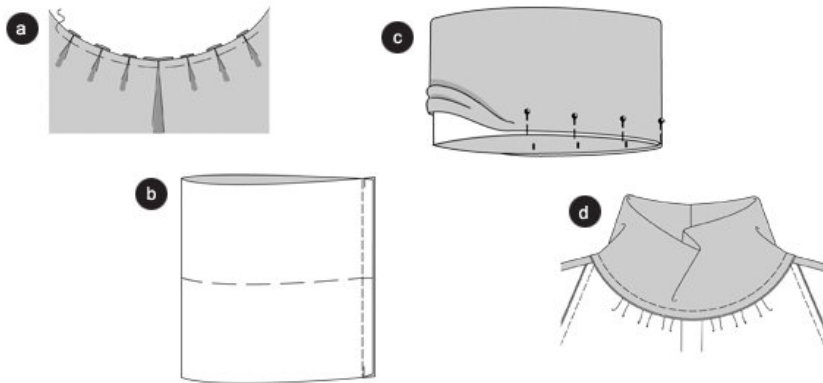
Pin the sleeves onto the armhole, the right fabric sides are facing. The cross lines 3 of sleeves and front piece have to meet. The seams of sleeves and side seams have to meet. When pinning the sleeve do it from the sleeve side (seam 4) and stitch. Trim allowances, neaten altogether and press towards the sleeve (b).

#### Sleeve darts

Fold the sleeves lengthwise, the right fabric side to the inside. Baste the darts of the upper sleeve edge, and stitch along the dart towards the tip. Knot threads. Trim the darts to the width of allowances and neaten. Press those allowances apart ©. Press the pointy end flat (d).

---

## Step 7



#### Front piece / pleats

Position the pleats along the neckline according to the arrow sign, baste (a).

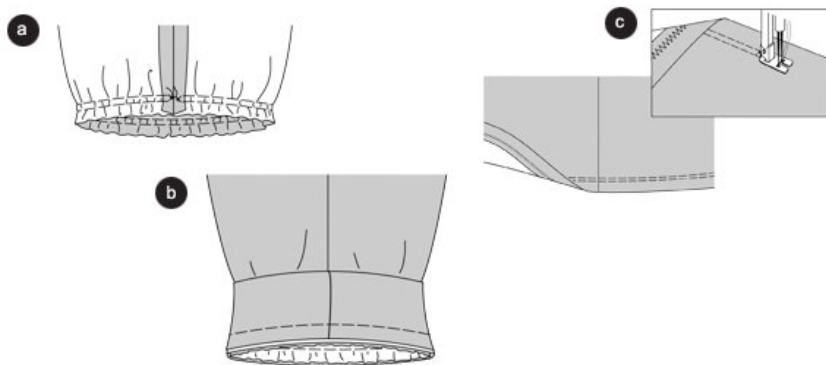
#### Collar

Fold the collar in half, right side to the inside. Stitch the back center seam. Press allowances apart. Fold the collar along the fold line to its half width, left side to the inside (b). Pin the open edges on top of each other ©.

Pin the collar onto the neckline, and the seam meets the back center. The cross lines meet the sleeve darts. Stretch the collar slightly, pin it and stitch using an elastic stitch. Trim allowances and neaten altogether (d).

---

## Step 8



### Cuffs

Close the cuff by closing it to form a circle. Press the allowances apart. Fold the cuff in half and pin the edges on top of each other.

Stitch the lower sleeve edge twice, stitching parallel using large stitches. Tighten the length of the under thread to the width of the sleeve cuffs plus 1 1/2" (4 cm). Knot threads. Distribute the width equally (a).

Pin the cuff onto the lower sleeve edge, the seams meet. Stretch the cuff to sleeve width, then pin and stitch using an elastic stitch. Trim allowances and neaten altogether. Turn the cuff down (b).

### Hemline:

Tip: Use a TWIN NEEDLE to stitch the hemline. Stitch onto the right side of the fabric, using two needle threads and one bobbin thread and a straight stitch adjustment. The bobbin thread stitches zigzag stitches. That way the fabric won't stretch when sewing and the edge will remain elastic.

Fold the hemline to the inside and press, pin. Use a twin needle to stitch the hemline edge 1/2" (1.2 cm) wide, thereby stitching the hemline ©.

---

**BurdaStyle**

Malissa