

## Sidonie Variation 2

By: burdastyle

<http://www.burdastyle.com/projects/sidonie-variation-2>

---



This is our second variation of the Sidonie skirt. A little less curvy than its predecessor it plays with geometric lines and symmetry sporting cool pleats on each side. In order to make this rather elegant and chic version, you need to download our new BS-023 pattern as well as the original 8281. Good luck and show us what you have made out of it!

## Materials

cashmere, zipper, charmeuse

---

## Step 1

### PATTERN

- 1 Center Front skirt panel 2x
  - 2 Side Front skirt panel 2x
  - 3 Top Front skirt panel 1x
  - 4 Back skirt panel 1x
  - 5 Top side back skirt 2x
  - 6 Side back skirt 2x
  - 7 Pocket Facing / Lining 1x
- 

## Step 2

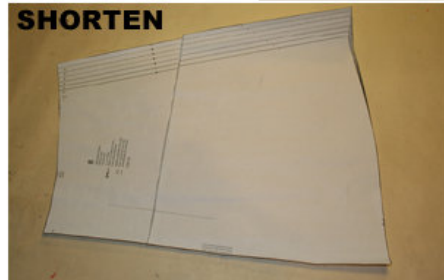
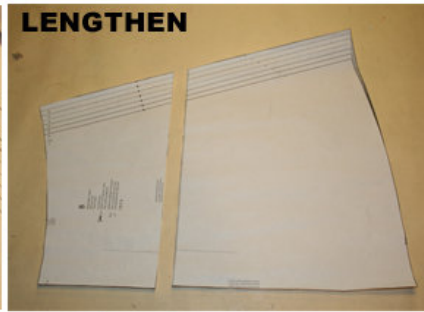


The patterns can be printed out at the copy shop. If you decide to print them at home, follow the instructions: Paper cut for ANSI A (German DIN A4) prints:

The patterns are printed out on 24 sheets with a thin frame. Wait, until all sheets are printed out. Arrange the sheets so that they fit together (see extra page with the overview of the prints). Cut off the single sheets on the upper and right edge along the thin frame lines. Begin with the left lower sheet and then glue the parts in the frame lines together precisely.

---

## Step 3



#### ADJUST PATTERN SIZES

Select your size according to the Burda-dimension table: Dresses, blouses, jackets and coats according to the bust size, trousers and skirts according to the hip width. Change the pattern if necessary, to fit your measurements if they deviate from the Burda-dimension table.

Cut out the pattern according to your size (a).

Refer to our "Adjust patterns for mixed sizes" technique

#### LENGTHENING OR SHORTENING THE PATTERN PIECES ACCORDING TO YOUR SIZE

Our pattern is calculated for a height of 5'6" (168 cm). If you are taller or shorter, you may adjust the pattern to fit your size. Choose your size at the lines marked "lengthen or shorten here". Thus the proper fit is preserved. Make sure that you adjust all pieces of one pattern by the same amount at the same lines (b)

How to lengthen and shorten pattern pieces:

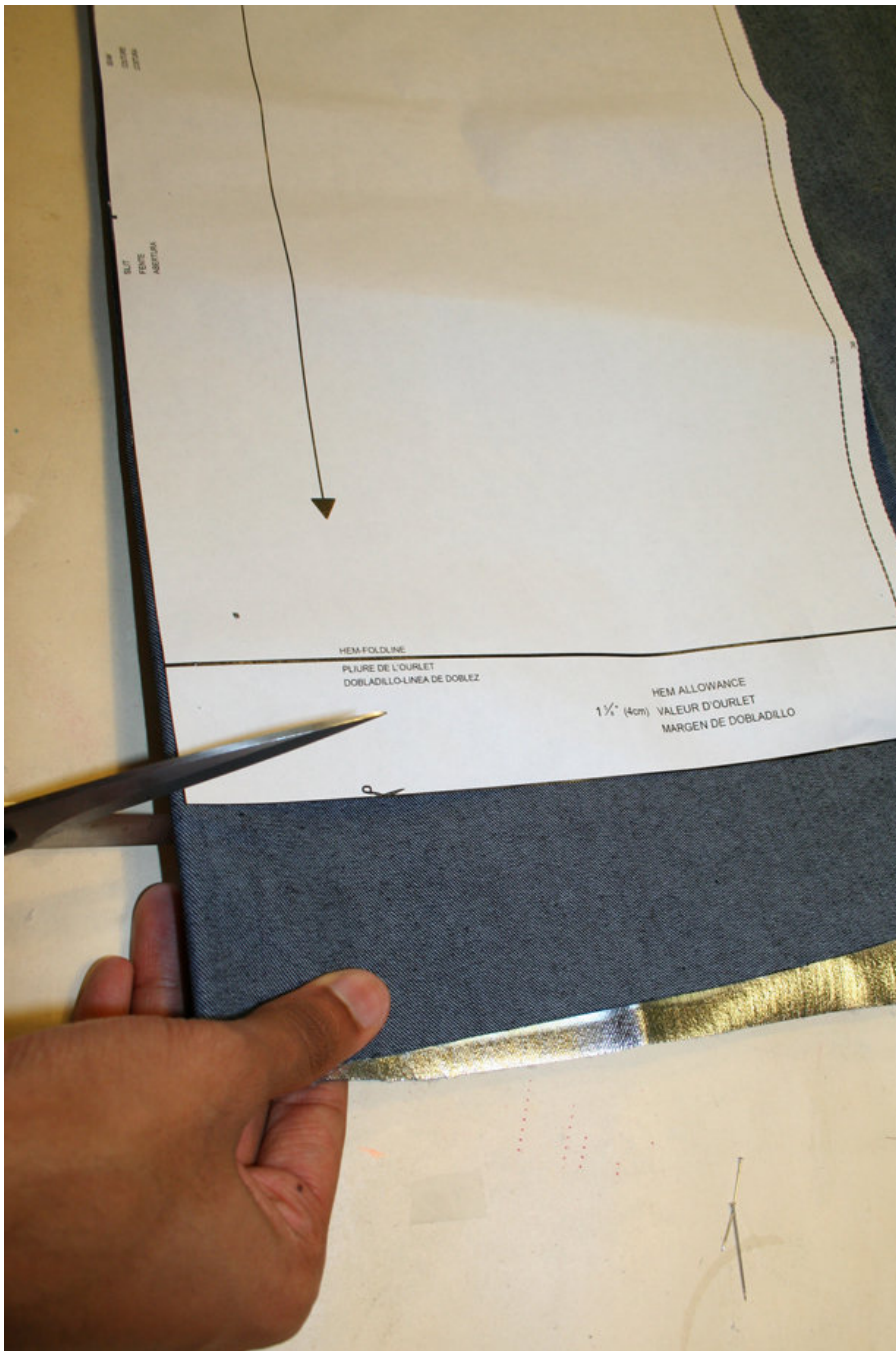
Cut the pattern pieces along the marked lines.

To lengthen, slide the two halves of the pattern piece as far apart as necessary.

To shorten, overlap the two halves of the pattern piece as far as necessary. Even out the side edges ©

---

## Step 4



## CUTTING OUT

FOLD ( ) means: here is the center of a pattern piece but never a cut edge or a seam. The piece should be cut double, with the fold line forming the centre line. Pattern pieces that are outlined with a broken line in the cutting diagrams are to be placed face down on the fabric. The cutting diagrams on the pattern sheet show how the pattern pieces should be placed on the fabric. (a)

The cutting diagrams show the placement of the pattern on the fabric.

Cut the pieces 1 and 2 bias.

The checked pattern should match along the side seams and the back center seam. Therefore place the skirt panel pattern onto the fabric in a way that the straight grain arrow runs parallel to the selvage, and the matching checked patterns are laying on top of each other. For a single layer of fabric, the pattern pieces are

pinned to the right side. For double layers of fabric, the right sides are facing and the pattern pieces are pinned to the left side. The pattern pieces that are shown in the cutting diagram, extending over the fold of the fabric, should be cut last from a single layer of fabric. (b)

---

## Step 5

SEAM AND HEMLINE ALLOWANCES are included on an average:

1 1/2" (4 cm) hemline, 5/8" (1.5 cm) for all edges and stitches. Using Burda copying paper, transfer the lines and signs of the pattern onto the left fabric side. You will find instructions in the packaging.

Lining

Cut the lining according to piece 4 and 5 " please consider the cutting diagrams.

Sewing

While sewing the right fabric sides are facing.

Transfer all lines of the pattern onto the right fabric side using basting stitches.

---

## Step 6



### Pleats

Cut 4 pieces of your self fabric that are 18" x 18" (46cm x 46cm). Make 1 1/2" (4cm) pleats along all the length of each of these pieces. Be sure to pleat in a way that the pleats will go in opposite directions when sewn into the skirt (2 panels with pleats going to the left, and 2 panels with pleats going to the right). Cut out Side Back Skirt Pieces and Side Front Pieces from these pleated pieces.

---

## Step 7



Sew pleats to skirt

Sew Top Side Front Panel to Side Front pleated panel. Sew Top Side Back to Side Back Skirt pleated panel.

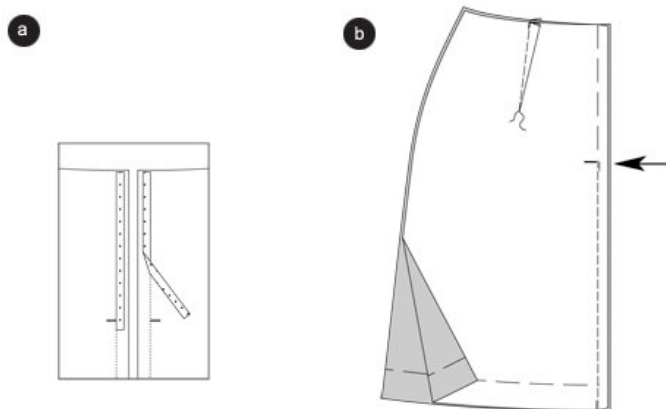
Sew Pocket Facing (cut in lining material), with right sides facing, to Center Front Skirt Panel, matching at notches. Snip to seam at notch, turn, and press.

Sew the completed Side Front to the pocket backing (cut in self), and to the Center Front Panel, matching at all the notches. Press seams open.

Sew completed Side Back Panels to Center Back Panel.

---

## Step 8



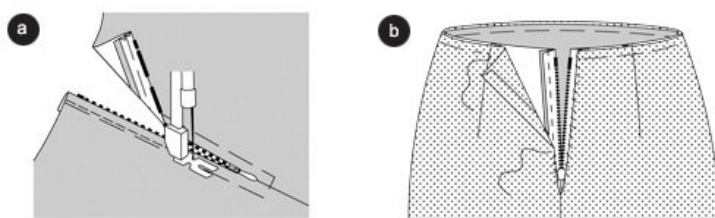
## Skirt

### Back center seam

Tip: Apply and press seam stay along the bias cut slit edges of the skirt panels to prevent deforming. Position the back skirt panels on top of each other, the right sides are facing. If you use checkered fabric, pin the matching patterns on top of each other, and pin the needle across the seam. Carefully stitch across the needles, and make sure that the checkered patterns won't move (a).

Baste the center seam, stitch from the slit down to the bottom. Secure seam ends. Keep the slits basted. Trim allowances and press apart. Cut the basting stitches of the slit (b).

## Step 9



### Zipper

Pin the zipper under the open edges, in such a way that the little teeth are covered. Stitch the zipper using the zipper foot (a).

### Side seams

Position the front skirt panel onto the back skirt panel, the right sides are facing. Baste the side seams (seam 1), and stitch. Trim allowances and press apart.

### Lining

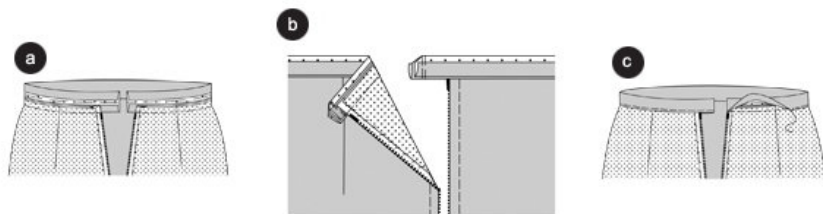
Stitch the darts of the back skirt panels and press towards the back center. Stitch the back center seam, leave

the slit open. Stitch the side seams (seam 7). Trim allowances and press apart.

Pull the lining over the skirt, the left sides of the fabrics are facing. Pin the upper edge onto the side seams meet. Pin the open edges onto the zipper straps and sew by hand (b).

---

## Step 10



### Waistband of the skirt

Press the waistband interfacing onto the left waistband.

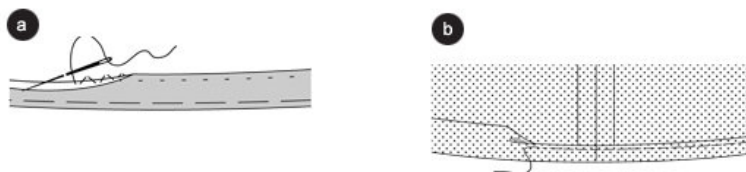
Baste the waistband onto the upper skirt edge (seam 8). Thereby allow the seam allowance of the right back skirt panel to overlay. Stitch. Secure thread ends. Press the allowances in towards the waistband. Fold the allowance of the long edge inside and press (a).

Fold the waistband along the fold line, the right side inside. Stitch the seam allowance on top of each other. Trim allowances. Cut the corners bias (b).

Fold the waistband inside and pin along the seam. Press. Stitch all waistband edges narrowly, thereby stitching the inner half onto the seam. Apply a **BUTTONHOLE** onto the left waistband. Sew a **BUTTON** onto the seam allowance ©.

---

## Step 11



### Hemline

Neaten hemline; fold inside and pin, then press. Sew the hemline by hand easily (a).

### Hemline of the lining

Fold the hemline inside and press. Pin. The lining should be approximately  $\hat{A}\hat{1}\hat{2}$ “ (1.5 cm) shorter than the skirt. Stitch the hemline narrowly (b).

---

## Sidonie Variation 2