

Sonja Dress

By: ElisaSalmePatterns

<http://www.burdastyle.com/projects/sonja-dress>



SONJA DRESS

LEVEL: BEGINNER / INTERMEDIATE

This is an easy sewing project with no lining

Suggested fabrics: Cotton, cotton blend, wool blend, hemp.

FABRIC REQUIREMENTS:

	Sizes 4-8	Sizes 10-12	Sizes 14-16
60"	1 1/2 yd. 1,5 m	1 1/2 yd. 1,40 m	1 1/2 yd. 1,40 m
45"	2 1/8 yd. 1,2 m	2 1/8 yd. 1,90 m	2 1/2 yd. 2,25 m

NOTIONS: 24" (60 cm) Invisible zipper

SIZING:

	4	6	8	10	12	14	16
	UK 6 EUR 34	UK 8 EUR 36	UK 10 EUR 38	UK 12 EUR 40	UK 14 EUR 42	UK 16 EUR 44	UK 18 EUR 46
Bust	33 " 84 cm	34 " 86,5 cm	35 " 89 cm	36 " 91,5 cm	37 1/2 " 95 cm	39 " 99 cm	40 1/2 " 103 cm
Waist	25 " 63,5 cm	26 " 66 cm	27 " 68,5 cm	28 " 71 cm	29 1/2 " 75 cm	31 " 79 cm	32 1/2 " 82,5 cm
Hips	35 1/2 " 90 cm	36 1/2 " 93 cm	37 1/2 " 95 cm	38 1/2 " 98 cm	40 " 101,5 cm	41 1/2 " 105,5 cm	43 " 109 cm

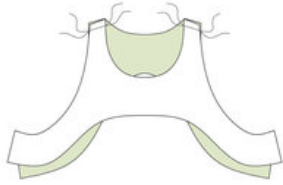
A cute little dress with a fitted bodice and pleated skirt. Zipper closure at back. Easy to make with clear, illustrated instructions. Visit <http://www.salme-sewing-patterns.com/> for more patterns! Happy sewing!

Step 1 — 1

SEWING INSTRUCTIONS

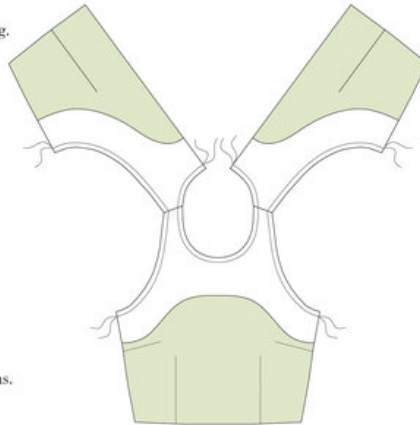
Stitch bodice darts.

Stitch shoulder seams of lining pieces, right sides facing.



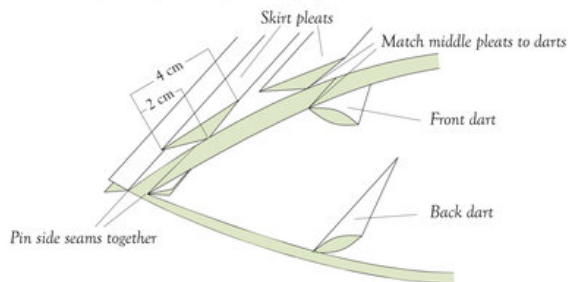
Stitch shoulder seams of front and back bodice, right sides facing. Place lining on top of main pieces, right sides facing, matching the neckline and armhole edges. Stitch neckline and armhole seams.

Trim seam allowances to 1/4", 1/8" along curved seams. Turn lining over to the wrong side.



Pin side seams, right sides facing, also pin front lining to back lining. Make sure seams match. Stitch.

Stitch side seams of skirt, right sides facing. Stitch back seam of skirt, up to zipper mark. Pin skirt on bodice at the side seams, right sides facing. Then start folding the pleats on the skirt. First fold the pleats at the front that match the front bodice darts. Follow the illustration below. Repeat for back piece. Pin in place then stitch along the entire waist seam, making sure the pleats stay in place.



Using widest possible stitch, stitch back seam from zipper mark all the way up, making sure waist seams match. Place zipper on the seam, its right side facing the wrong side of garment. Pin to attach zipper tape to seam allowances only, then stitch in place along both sides. Using a seam-ripper open the wide-stitched seam. Fold and hand stitch to attach the ends of lining pieces to zipper tape.

Check hem length, turn 1/2", then 1", press and stitch.

See image for instructions.

BurdaStyle

Sonja Dress