

Kiki

By: burdastyle

<http://www.burdastyle.com/projects/kiki>

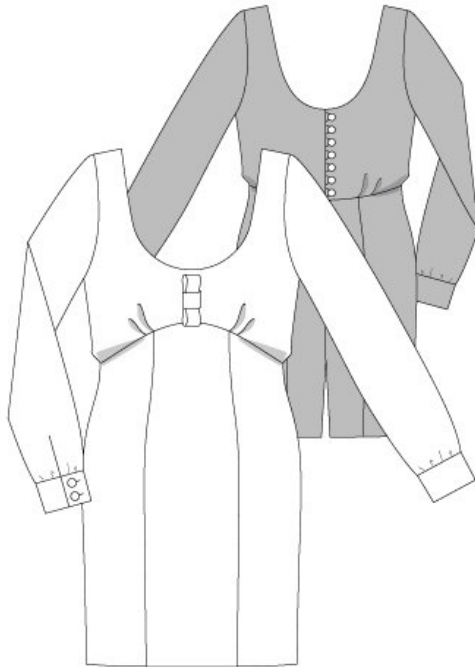


The Kiki dress is perfect for Holiday parties: the curved front and back scoop neck is soft & elegant while a bounty of center back buttons lend this dress a lovely vintage feel. The Kiki dress comes with 3 sleeve variations (included in this pattern), which are perfectly fit for multiple occasions!

Materials

2 – 2 1/4 yards medium – lightweight cotton or silk blends, chiffon. 20cm zipper, 90cm x 15cm interfacing, 11 small buttons

Step 1 — Pattern



PATTERN

- 1 Front piece 1x
- 2 Back piece 2x
- 3 Center front skirt panel 1x
- 4 Side front skirt panel 2x
- 5 Center back skirt panel 2x
- 6 Side back skirt panel 2x
- 7 Placket 2x
- 8 Loop 1x
- 9 Ribbon piece 1x
- 10 Knot piece 1x
- 13 Slit placket (Sleeve) 2x
- 14 Sleeve 2x
- 15 Cuff 2x
- 18 Front piece (lining) 1x
- 19 Back piece (lining) 2x

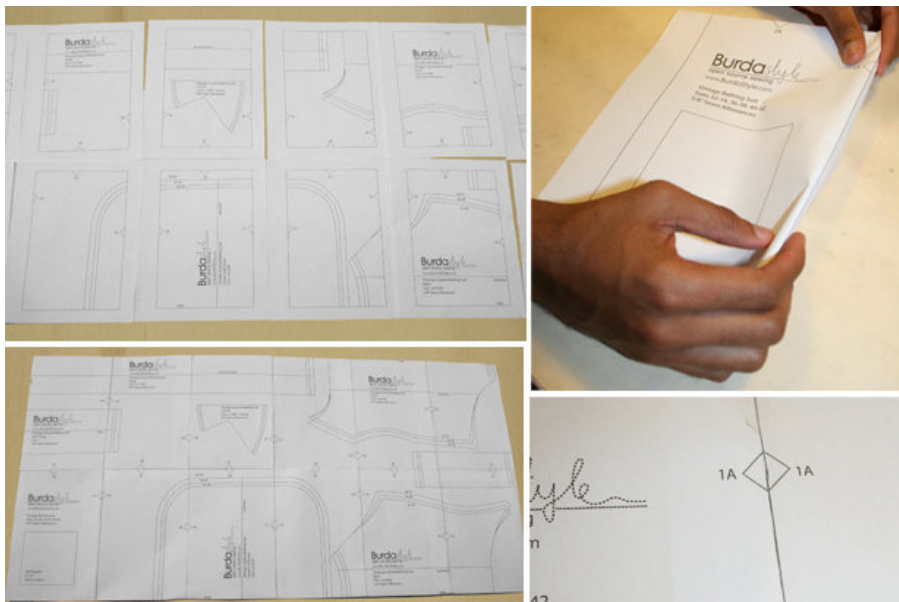
Fabrics Light cotton fabrics, silk chiffon fabric

The patterns can be printed out at the copy shop. If you decide to print them at home, follow these instructions:

Paper cut for ANSI A (German DIN A4) prints:

The patterns are printed out on 45 sheets with a thin frame. Wait until all sheets are printed out. Arrange the sheets so that they fit together (see additional page with the overview of the prints). Fold the single sheets on the upper and right edge along the thin frame lines. Begin with the left lower sheet and then

Step 2 — Adjust Pattern Sizes



ADJUST PATTERN SIZES

Select your size according to the Burda-dimension table: dresses, blouses, jackets and coats according to the bust size, trousers and skirts according to the hip width. Change the pattern to fit your measurements if they deviate from the Burda-size chart. Cut out the pattern pieces according to your size.

Refer to our [Adjust patterns for mixed sizes](#) technique.

LENGTHENING OR SHORTENING THE PATTERN PIECES

Our pattern is calculated for a height of 5â– 6â– (168 cm). If you are taller or shorter, you can adjust the pattern pieces along the lines marked “lengthen or shorten here”. This way the proper fit is maintained. Always adjust all pattern pieces along the same line to the same degree.

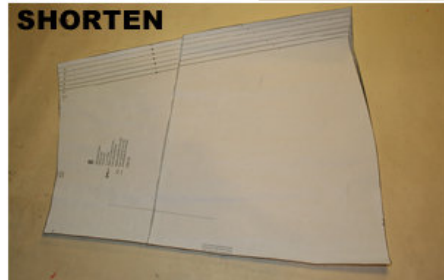
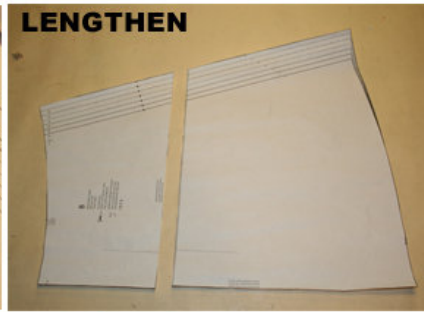
How to lengthen and shorten pattern pieces:

Cut the pattern pieces along the marked lines

To lengthen, slide the two halves of the pattern piece as far apart as necessary.

To shorten, overlap the two halves of the pattern piece as far as necessary. Blend the side edges.

Step 3 — Cutting Out



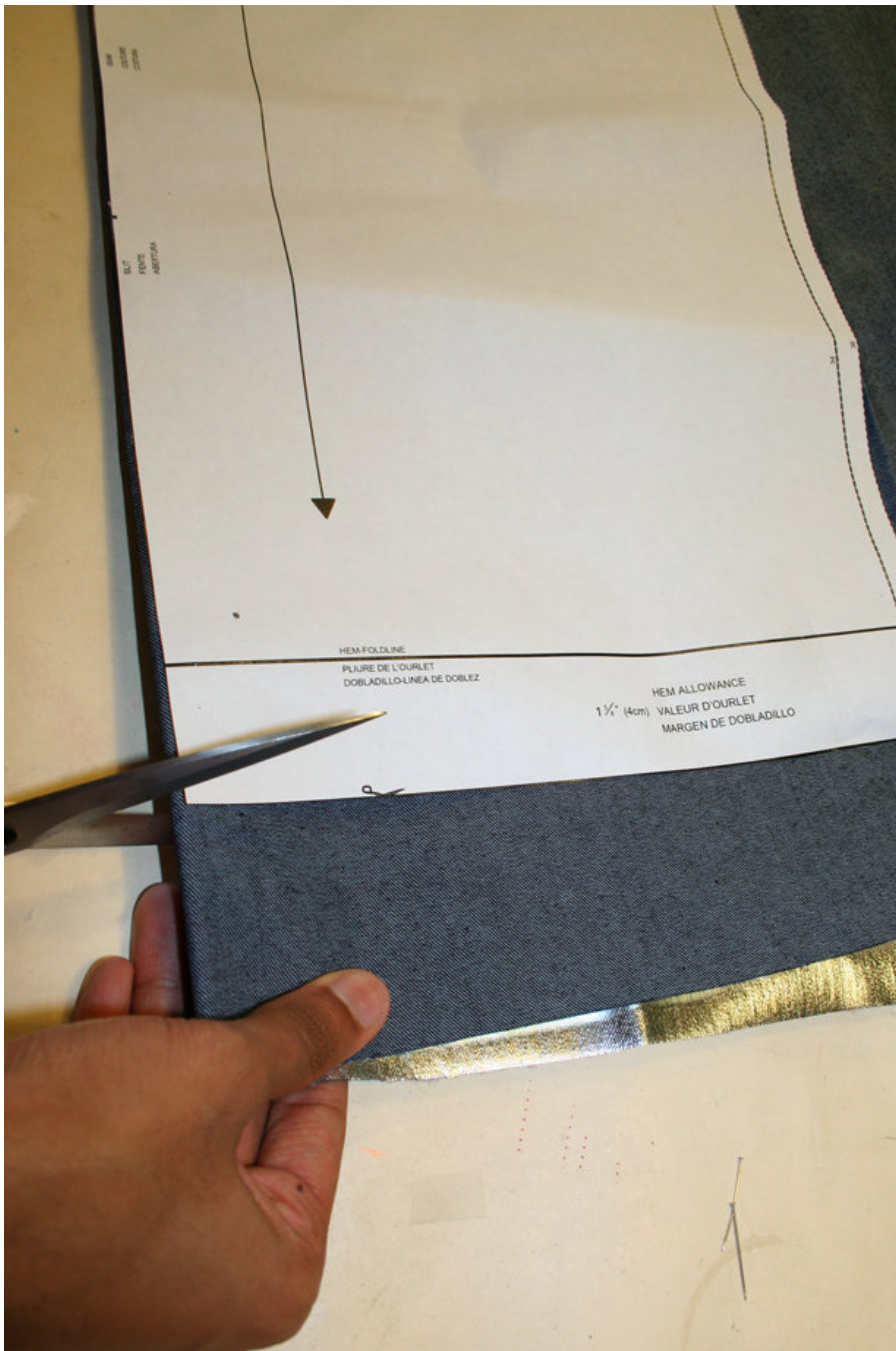
CUTTING OUT

FOLD () means: Cut on the fold, the fold being the center of the pattern piece, but never a cut edge or seam. The piece should be cut double, with the fold line forming the center line. Pattern pieces that are outlined with a broken line in the cutting diagrams are to be placed face down on the fabric. The cutting diagrams on the pattern sheet show how the pattern pieces should be placed on the fabric.

The cutting diagrams show the placement of the pattern on the fabric.

For a single layer of fabric, the pattern pieces are pinned to the right side. For double layers of fabric, the right sides are facing and the pattern pieces are pinned to the wrong side. The pattern pieces that are shown extending over the fold of the fabric in the cutting diagram should be cut last from a single layer of fabric.

Step 4 — SEAM AND HEMLINE ALLOWANCES



SEAM AND HEMLINE ALLOWANCES are included on an average: 1 5/8" — 8" (4 cm) for hem, 5/8" — (1.5 cm) for all edges and stitches. Using BURDA copying paper, transfer the lines and signs of the pattern onto the wrong side of the fabric. Instructions can be found in the packaging.

LINING

Cut the lining according to pattern pieces 3, 6, 18 and 19. See cutting diagram.

INTERFACING

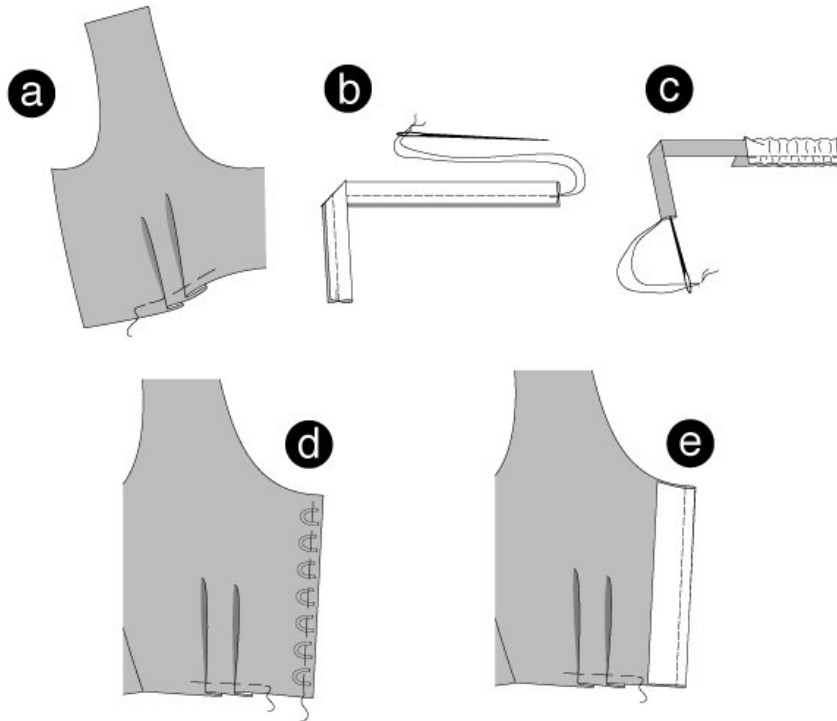
Cut out the interfacing pieces and press onto the wrong side of the fabric.

Sewing

While sewing, the right sides of the fabric are facing.

Transfer all lines of the pattern onto the right side of the fabric using chalk.

Step 5 — DRESS FRONT PIECE / PLEATS



DRESS FRONT PIECE / PLEATS

Position the pleats on the front piece according to the arrows. Pin along the bottom edge. Position the pleats on the back piece in the same way. Pin. (a)

SHOULDER AND SIDE SEAMS

Position the back and front pieces together, right sides facing. Pin shoulder seams (seam number 1) and side seams (seam number 2). Stitch. Neaten allowances and press apart.

LOOPS

Fold strips lengthwise, right sides facing. Stitch $\frac{1}{4}$ " (0.7 cm) next to the fold line. Trim allowances. Cut the threads, thread a needle and knot. Push the needle with its eye first through the loops (2a). Cut the strip in 7 equal pieces. (b)

Mark cross lines on the left edge of the back piece; the top and bottom loops as marked on the pattern, the others spaced out equally.

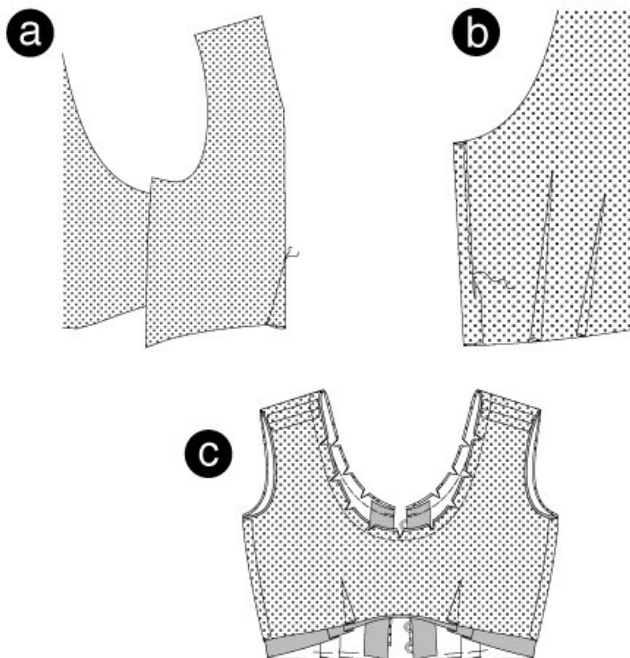
Position the loops on the edge and pin. The size of the loop must correspond with the button size. ©

PLACKET (piece 7)

Neaten inner placket edges (without seam number).

Position the placket on the back edges of the back pieces (seam number 3), right sides facing. Stitch enclosing the loops. (d)

Step 6 — LINING / DARTS



LINING

DARTS

Stitch the darts on the front piece to a point. Knot thread ends. Press darts towards the center. Stitch the darts on the back piece accordingly and press towards the center. (a)

SHOULDER and SIDE SEAMS

Position the back and front pieces together, right sides facing. Position the shoulder (seam number 8) and side seams (seam number 9). Pin. Neaten allowances and press.

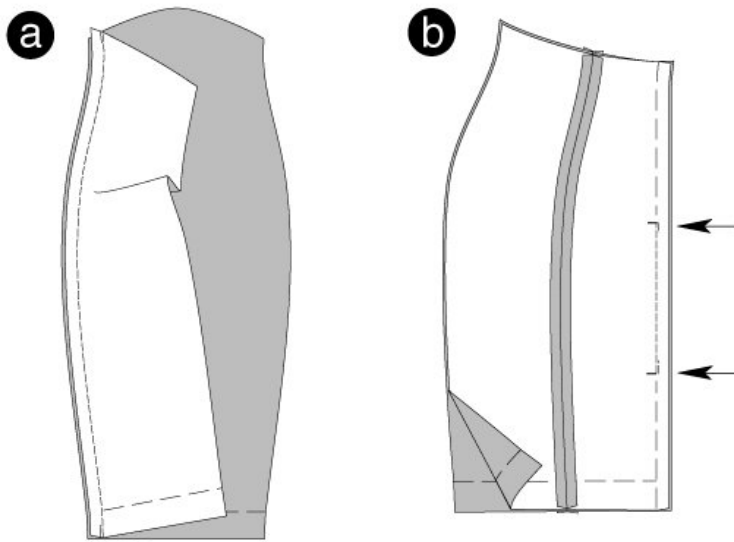
Fold the allowances of the back edges inside, fold again and topstitch narrowly. (b)

NECKLINE

Position the lining on the front and back piece, right sides facing. Position the neckline edges together and stitch. Trim allowances and snip in. ©

Flip the lining inside. Pin neckline edge, press and topstitch narrowly. Position the lining on the armhole edges and pin.

Step 7 — SKIRT FRONT / PRINCESS SEAMS



SKIRT

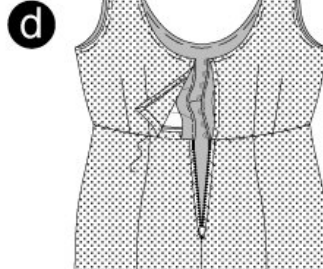
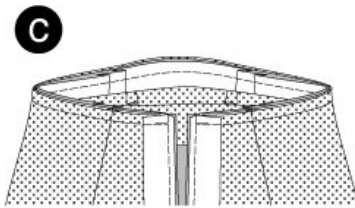
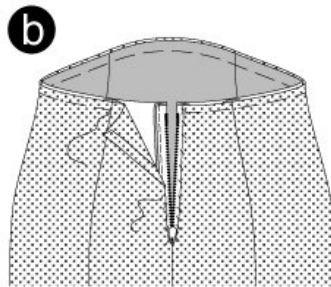
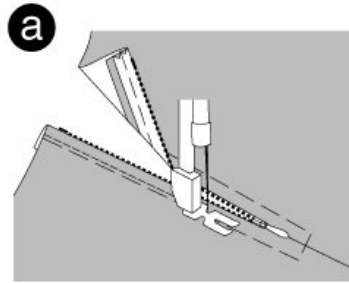
FRONT PRINCESS SEAMS

Position side front and center front skirt pieces together, right sides facing. Pin front princess seams (seam number 4) and stitch. Neaten allowances and press apart. Stitch back princess seams accordingly (seam number 5). (a)

CENTER BACK SEAM / SLIT

Position the back skirt panels together, right sides facing. Pin center back seam and stitch between the opening signs (arrows). Keep opening pinned. Neaten allowances, press apart. Remove the pins. (b)

Step 8 — ZIPPER / SIDE SEAMS / LINING



ZIPPER

Position the zipper under the opening edge so that the little teeth are hidden. Stitch using a zipper foot. (a)

SIDE SEAMS

Position the front and back skirt panels together, right sides facing. Pin side seams (seam number 6) and stitch. Neaten allowances and press apart.

LINING

Stitch princess seams, center back seam and side seams. Same seam numbers meet. Neaten allowances and press apart.

Move the lining skirt over the fabric skirt, wrong sides facing. Position top edges together and pin. Turn the lining inside and stitch onto the zipper straps. (b)

STITCH SKIRT

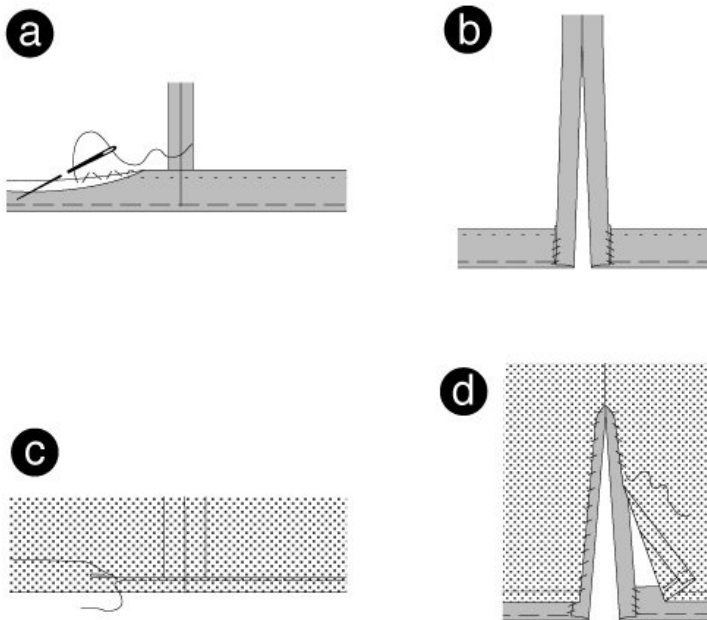
Open the zipper. Position the plackets on the back piece.

Position the skirt and top piece together (seam number 7); right sides facing and centers meeting. Side seams meet. Do NOT enclose the lining at the top piece. Flip the plackets over the skirt to the outside. Pin. Stitch skirt. Trim allowances, neaten and press inside the top piece. Put the plackets back inside. Pin the edges, press and stitch. ©

Fold the edges of the lining at the top piece and pin. Stitch by hand. Let the lining stay loose along the opening edge. (d)

Apply **BUTTONS** onto the right back piece so that the opening edges meet when closing the buttons.

Step 9 — HEMLINE / SLIT



HEMLINE / SLIT

Turn opening allowances

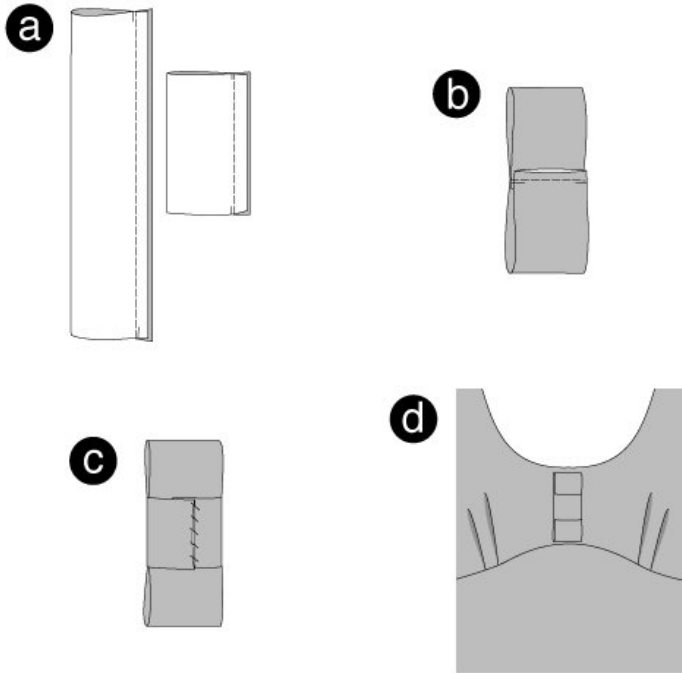
Neaten hemline, fold and press. Sew hemline by hand. (a) Turn the allowances inside and stitch onto the hemline (b)

LINING HEMLINE

Turn opening allowances

Fold hemline and press. Fold again and pin. Topstitch hemline narrowly. © Fold the opening allowances inside and press. Stitch the edges onto the opening allowance (d).

Step 10 — RIBBON

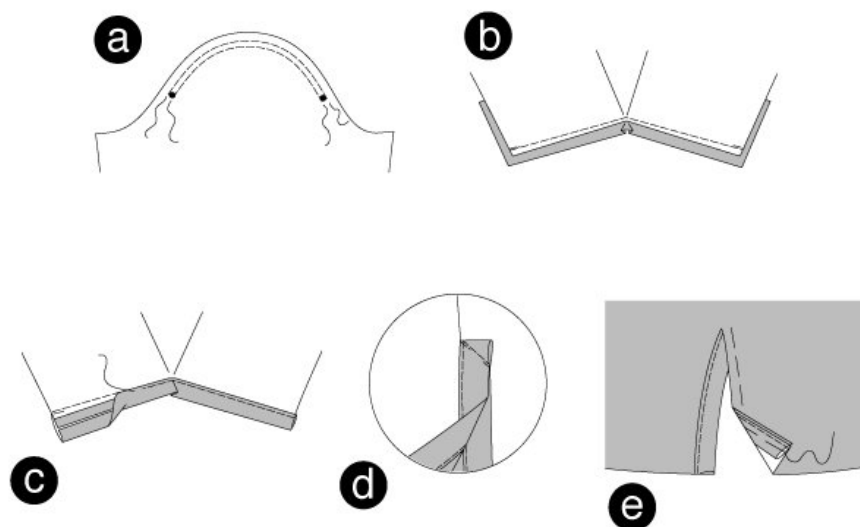


RIBBON

Fold the strip for the ribbon and the knot lengthwise along the fold line into half, right sides facing. Stitch the long edges. Press allowances apart, turn strips and press. (a)

Put the ribbon in position, the ends meet. Topstitch the ribbon center, enclosing the ribbon ends. (b) Wrap the strip for the knot around the ribbon center. Sew the ends by hand on the back of the ribbon ©. Apply the ribbon onto the center front of the top (d).

Step 11 — CUFFED SLEEVE



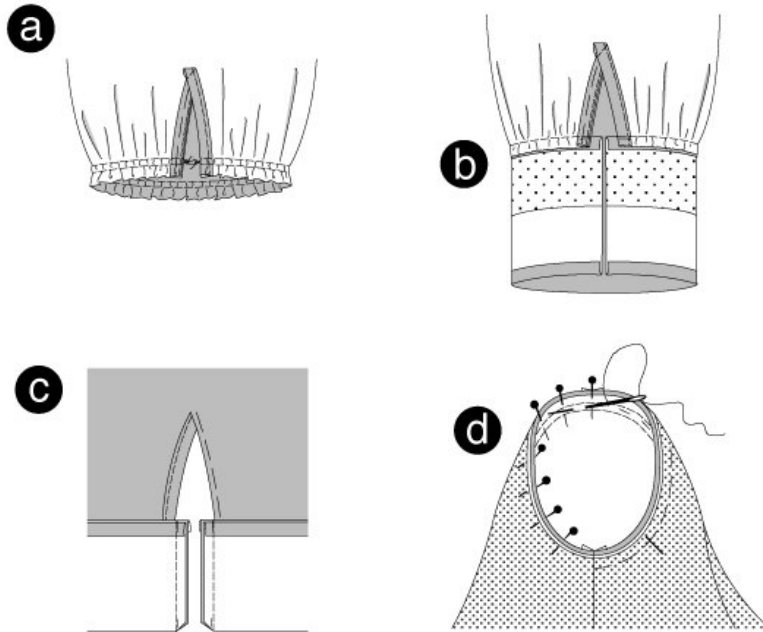
CUFFED SLEEVE

Double stitch the sleeve curve from * to * using basting stitches. (a)

Snip in the bottom sleeve edge at the markings. Pull the cut edges slightly and pin. Position the edges onto the placket and stitch. Fold the placket over the seam line and press. (b)

Turn the placket inside, fold and pin along the seam line. Stitch. © Position the opening edges together, right sides facing. Stitch the end of the opening at a slant (d). Turn the placket at the front opening edge inside (e). Fold the sleeves lengthwise, right sides facing. Stitch sleeve seams (seam number 13). Neaten allowances and press apart.

Step 12 — APPLY SLEEVES



Ease the bottom sleeve edge through double stitching using basting stitches. Then tighten the bobbin threads to the width of the cuff. Knot thread ends and distribute the width evenly. (a)

Position the interfaced cuff piece on the bottom sleeve edge (seam number 14) and stitch. Press allowances inside the cuff. Fold the allowance of the long edge inside and press. (b)

Fold the cuff along the fold line, right sides facing. Stitch the narrow edges together. Trim allowances and cut the corners at a 45-degree angle. Fold the cuff along the fold line inside and stitch along the seam line. Press. Topstitch the cuff edges narrowly, thereby stitching the inner layer as well. ©

APPLY SLEEVES

To ease the sleeve cuff tighten the bobbin threads slightly.

Position the sleeve on the armhole, right sides facing. When applying 4 points are important for the right fit: The cross lines 12 on sleeve and front piece have to meet. Sleeve and side seams have to meet. The cross line on sleeve curve and shoulder seam have to meet. The eased width has to be distributed without creating pleats or puckering. Pin and stitch from the sleeve side. (d)

Trim allowances, neaten and press inside the sleeve.

BurdaStyle

Kiki