

6/2010 DrapÃ© Dress

By: burda style magazine

<http://www.burdastyle.com/projects/62010-drap%C3%A9-dress>

Drap Dress burda style magazine patterns FAQ

Materials

Ombre silk chiffon with colours running lengthwise and silk satin for lining

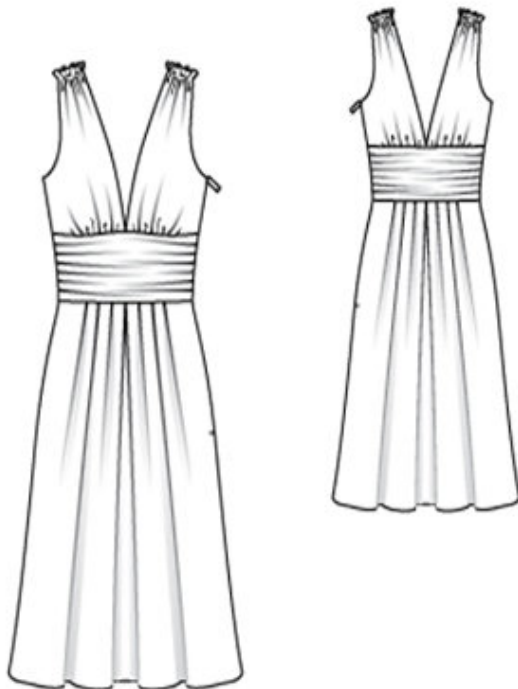
Step 1 — Preparation

Trace the pattern pieces from the pattern sheet. Lengthen piece 25 as indicated.

Seam and hem allowances:

Seams, edges and hem 1.5 cm (5/8 in).

Step 2 — Cutting Out



Chiffon:

21 front 2x

22 back 2x

24 drap piece, on a fold 2x

25 skirt panel, on a fold 2x

Satin (lining):

21 front 2x

22 back 2x

23 front waistband, on a fold 2x

23 back waistband, on a fold 2x

25 skirt panel, on a fold 2x

Interfacing: See pattern layout.

Step 3 — Pleats in skirt panels

Fold pleats in skirt panels in arrow direction and baste.

Step 4 — Drap Pieces

Lay drap pieces right sides together with upper edge of skirt front and back (seam number 3). Pin interfaced waistband pieces right sides together with upper edges of skirt, over drap pieces. Stitch along seam lines. Lay interfaced waistband pieces up over seam and press. Fold drap pieces up on fold line. Match fold edge to abutting line. Do not press fold edge. Fold pleats in side edges of drap pieces as marked and baste to side seam edges of waistband pieces. The drap pieces should lie taut across the waistband pieces. Baste upper edge in place.

Step 5 — Front and back pieces of main fabric and lining

Lay front and back pieces of main fabric and lining each right sides facing. Stitch armhole edges together. Trim allowances. Lay lining pieces over seam allowances and stitch to seam allowances, close to seams. Turn lining pieces to inside and press edges. Baste open edges together.

Step 6 — Self-facings, stitching waistband and drap pieces

Gather lower edge of front and back pieces between asterisks to 10.5 — 11 — 11.5 — 12.5 — 13 cm (4 1/4 — 4 3/8 — 4 1/2 — 5 — 5 1/4 ins). Neaten inside edge of self-facings. Lay self-facings to inside on fold line but do not press fold edge. Sew inside edges of facing in place by hand. Stitch waistband pieces with drap pieces to lower edge of front and back pieces — neck edges meet at centre of waistband. Press seam allowances down.

Step 7 — Right side seam

Stitch right side seam. On bodice, press side seam open and sew upper edges of allowances in place. Trim seam allowances of skirt, neaten together, and press onto back.

Step 8 — Waistband

Stitch right side seam of skirt lining. Fold pleats in arrow direction and baste. Stitch right side seam of inside waistband piece as mirror image of outer waistband. Stitch inside waistband to upper edge of skirt lining with right side facing wrong side. Press seam allowances onto waistband. Lay front and back pieces down onto waistband again. Pin upper edge of inside waistband right sides together with upper waistband joining seam, catching front and back pieces. Stitch inside waistband exactly in line of previous stitching, stitching as far as possible at right side seam. Lay inside waistband and skirt lining down. Baste left side seam edges together to slit mark. On inside, in area of right side seam, sew inner waistband in place by hand.

Step 9 — Zipper

Sew invisible zip to left slit edges. Begin at edge of armhole and leave ends of zip tapes extending at the top. Clip seam allowances of chiffon at end of opening. Stitch left side seams of main fabric and lining each separately below zip. Turn in top ends of zip tapes and sew in place.

Step 10 — Stitching shoulder edges

Lay shoulder edges of front and back to inside on fold line and baste. Gather shoulder edges to a width of 4.5 — 4.5 — 5 — 5 — 5.5 cm (1 7/8 — 1 7/8 — 2 — 2 — 2 1/4 ins) (gathering stitches on each side of marked gathering line). Lay fronts on back pieces with wrong sides facing and stitch shoulder edges together along lines of gathering. Remove gathering threads.

BurdaStyle

6/2010 DrapÃ© Dress