

# 12/2011 Knickers

By: burda style magazine

<http://www.burdastyle.com/projects/122011-knickers>

---



Knickers burda style magazine patterns FAQ

# Materials

Herringbone

---

## Step 1 — Preparation



Paper cut for ANSI A (German DIN A4) prints:

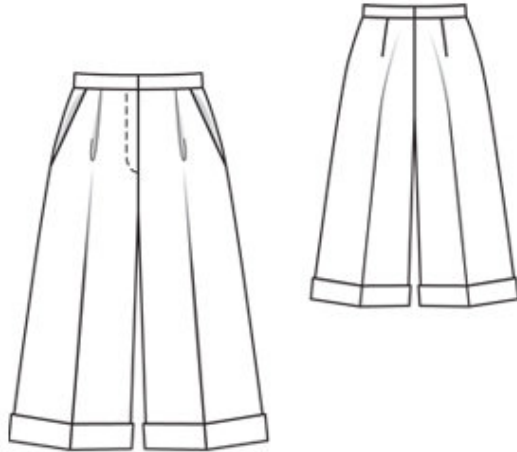
This pattern is printed on 8.5 × 11 sheets of plain paper. Do not scale or center pages before printing. Wait until all sheets are printed out before beginning to tape them together. **Do not cut out pattern pieces yet**— Arrange the sheets on a large, hard, flat surface so that they fit together, matching up like numbers and letters (i.e. 6A to 6A). To tape pattern together, fold under the margin of one piece (6A) and tape right against the line of it's matching number/letter (6A).

**burda style magazine pattern do not have seam allowance included.**

Seam and hem allowances to be added: Seams and edges 1.5 cm (5/8 in).

---

## Step 2 — Cutting out



**Herringbone:**

21 front culotte piece 2x

22 side hip yoke with

â— integrated pocket piece 2x

23 back culotte piece 2x

a) left underlap piece, 19 â— 19 â— 19 â— 21 â— 21 cm (71/2 â— 71/2 â— 71/2 â— 83/8 â— 83/8 ins) long, 7 cm (3 ins) wide, finished width 3.5 cm (1 1/2 ins),

b) right waistband, 34.5 â— 36.5 â— 38.5 â— 40.5 â— 42.5 cm (135/8 â— 143/8 â— 151/4 â— 16 â— 16 3/4 ins) long, left waistband with 4 cm (15/8 in) underlap 38.5 â— 40.5 â— 42.5 â— 44.5 â— 46.5 cm (15 1/4 â— 16 â— 16 3/4 â— 17 1/2 â— 18 1/4 ins) long, each 6 cm (2 1/2 ins) wide, finished width 3 cm (1 1/4 ins).

**Lining:**

22 pocket piece 2x

Interfacing: Iron to wrong side of waistband pieces.

## Step 3 — Front

Press creases in culotte fronts, at lower edge pressing only to approx. 10 cm (4 ins) above fold line, for now. Lay pleats in direction of arrows and baste. Stitch back darts and press toward centre.

## Step 4 — Hip yoke pockets

Stitch pocket pieces right sides together with pocket opening edges of trouser fronts. Turn pocket pieces up and stitch to seam allowances, close to seam. Turn pocket pieces to inside. Pin pocket opening edges to side hip yokes, at abutting lines. Stitch edges of pocket pieces together. Baste pocket pieces to wrong side of trouser fronts, first trimming away allowance of right pocket piece along centre front.

---

## Step 5 — Side seams

Stitch side seams and inside leg seams. Stitch centre front seam from slit mark to inside leg seam.

---

## Step 6 — Zip slit

Press self-facings on slit edges to inside, along centre front on the right and 5 mm (3/16 in) before centre front on the left. Stitch zip under left slit edge (underlap), stitching close to teeth of zip. Pin slit closed, matching centre fronts. Stitch loose zip tape to right facing, not catching trouser piece. Baste facing in place. Topstitch slit from upper edge to 3 cm (1 1/4 ins) before end, as marked. Fold underlap piece lengthwise, right side facing in. Stitch across bottom end. Turn right side out. Lay underlap under left edge of slit and pin to facing. Stitch facing to underlap, close to zip joining seam. Lay slit closed again and topstitch to the end, catching underlap.

---

## Step 7 — Waistband and centre back seam

Fold waistband pieces in half lengthwise and press, wrong side facing in. Unfold waistband again. Stitch right and left waistband to upper edge of culottes, stitching waistband underlap to underlap of opening edge. Press allowances of joining seams onto waistband pieces. Stitch centre back seam, stitching across ends of waistband. Press seam open, from upper edge to beginning of curve. Do not press seam allowances flat along curve. Attach hook of fastener to inside half of waistband, 1 cm (3/8 in) from right end of waistband. Fold waistband right side facing in and stitch across front ends. Turn waistband right side out. Turn in inside waistband edge and baste approx. 4 cm (15/8 ins) long, then lay flat over joining seam. Work from right side to stitch along line of joining seam, thereby catching waistband edge. Sew bar of fastener to waistband, to match hook.

---

## Step 8 — Turn-ups

Press lower edges to inside on turn-up fold line. Machine stitch or sew in place by hand. Turn up lower edges of culottes, 6 cm (2 1/2 ins) wide, and press. Hand sew upper edge of turn-ups in place, approx. 2 cm (3/4 in) below crease.

---

## Step 9 — Creases

Press creases in culotte backs. Re-press creases in front hem edges.

---

**BurdaStyle**

12/2011 Knickers