

5/2011 Dress with Peter Pan Collar

By: burda style magazine

<http://www.burdastyle.com/projects/52011-dress-with-peter-pan-co>



Dress with Peter Pan collar. This pattern is for PETITS, or people no taller than 5' 2". The shoulder-to-bust, shoulder-to-waist, shoulder-to-hip and shoulder-to-hem measurements are 1-2cm. shorter than a regular-sized pattern. I've listed the size equivalents next to the petit sizes for reference, but remember the difference in lengths. 17 (34), 18 (36), 19 (38), 20 (40), 21 (42) burda style magazine patterns FAQ

Materials

Plaid linen fabric

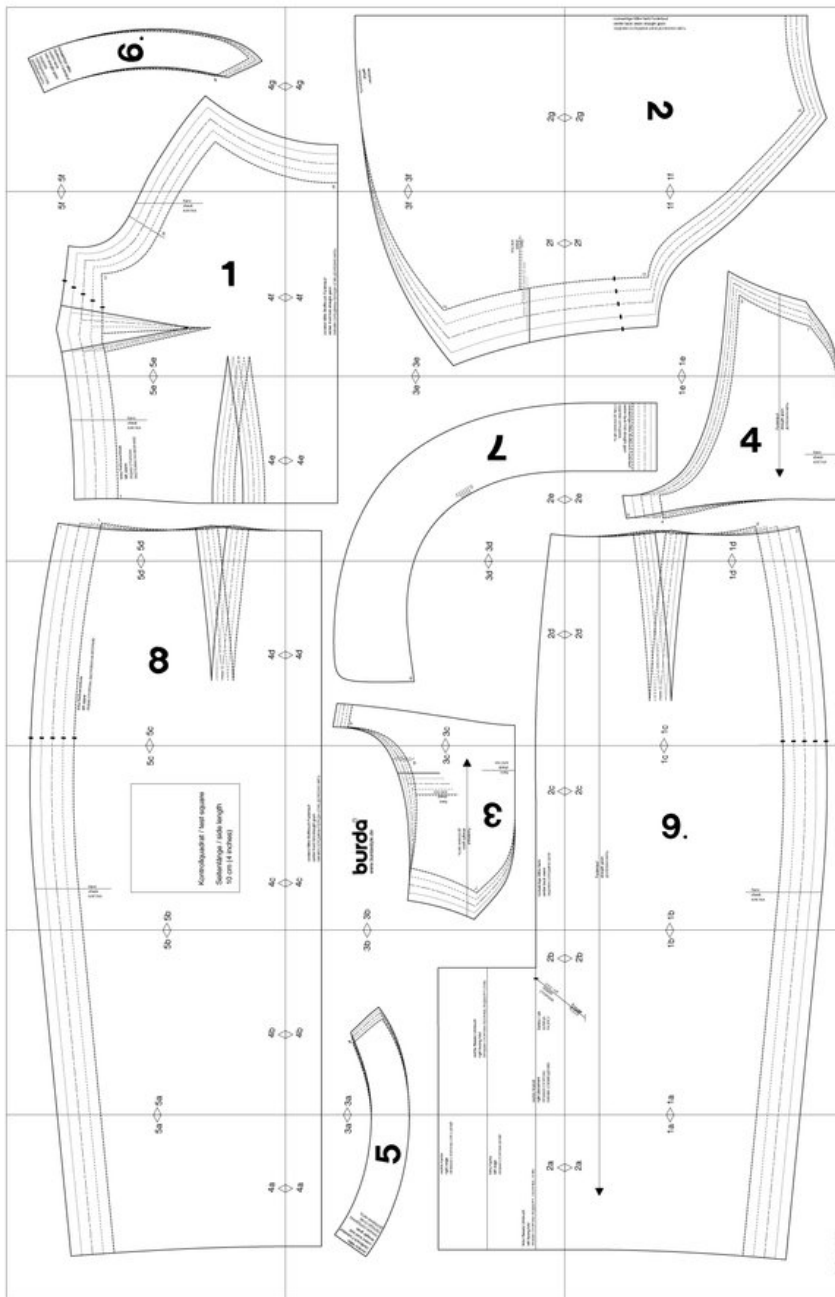
Step 1 — Preparation

Dress with Peter Pan collar. This pattern is for PETITS, or people no taller than 5' 2". The shoulder-to-bust, shoulder-to-waist, shoulder-to-hip and shoulder-to-hem measurements are 1-2cm. shorter than a regular-sized pattern. I've listed the size equivalents next to the petit sizes for reference, but remember the difference in lengths:

17 (34), 18 (36), 19 (38), 20 (40), 21 (42)

Note different lines for right and left edges of vent on piece 9 but cut both skirt panels the same size initially from the double layer of fabric.

Step 2 — Cutting out



The pattern layout below shows you how to place the pattern pieces on the fabric. Make sure that the grain line marked on the pattern pieces runs parallel to the selvages of the fabric.

If you are working with plaid fabric, note the plaid lines marked on the pattern pieces. At the edges to be stitched together, these lines should each lie on the same line of plaid.

Linen:

1 front, on a fold 1x

2 back 2x

3 sleeve front 2x

4 sleeve back 2x

5 front facing, on a fold 1x

6 back facing, on a fold 1x

7collar, on a fold 2x
8front skirt panel, on a fold 1x
9back skirt panel 2x

Seam and hem allowances:

Use a ruler and tailor's chalk to mark allowances around paper pattern pieces: 4 cm (15/8 ins) for hem, 3 cm (11/4 ins) for sleeve hems, and 1.5 cm (5/8 in) at all other seams and edges. Cut out the fabric pieces on these lines.

Step 3 — Centre back seam (dress bodice)

Place right sides of fabric together to baste and stitch.
Secure start and end of seams by backstitching.

Lay bodice backs together, right sides facing. Pin the centre back seam. Stitch (1). Press the seam allowances open and neaten edge.

Step 4 — Centre back seam, slit (skirt)

Lay back skirt panels right sides together. Pin centre back seam, pinning back vent closed. Stitch centre back seam from upper edge to slit mark. Backstitch to secure start and end of seam. Stitch vent closed, at a long stitch setting (2). Press seam allowances open, from upper edge to approx. 5 cm (2 ins) above vent allowances. Press vent allowances onto left skirt panel, tapering allowance of right skirt panel above top of vent, to avoid needing to clip into it. Press facing on right back skirt panel to inside, on fold line. Trim away facing of left skirt panel 1.5 cm (5/8 in) from line marked LEFT EDGE (3). Neaten vent allowances and seam allowances. Work from right side of skirt to topstitch left skirt panel diagonally, as marked on pattern, catching vent allowances.

Step 5 — Darts

For each dart, fold front and skirt pieces so that dart lines meet. Pin dart lines together. Stitch darts toward points. Do not backstitch at points of darts but knot ends of threads securely (4). Press bust darts down. Press waist darts toward centre front or centre back.

Step 6 — Waist seam

To gather lower edge of back, stitch a line of machine basting (longest stitch setting) to each side of marked seam line. Hold bobbin threads of stitching and slide the fabric together along the thread until it matches the upper edge of the skirt back. Knot gathering threads. Distribute gathering evenly (5).

Lay bodice back right sides together with skirt back and lay bodice front right sides together with skirt front. Pin waist seam. Stitch (6). Neaten seam allowances together and press up.

Step 7 — Right side seam

Lay front right sides together with back. Pin right side seam, matching seams and seam lines. Stitch (7). Press seam allowances open and neaten edges of allowances.

Step 8 — Invisible zip, left side seam

Open the zip and push the coil back with your thumb nail to reveal the marked seam line between the zip tape and the coil. Place the open zip face down on the right fabric side of back opening edge so that teeth of zip begin at marked top slit mark. In order to stitch the zip in place exactly along the marked seam line, the edge of the zip tape must lie 5 mm

(3/16 in) from the fabric edge (1.5 cm/ 5/8 in wide seam allowances minus 1 cm (3/8 in) wide zip tape width). Pin top end of zip tape in place the calculated distance from the edge of the fabric. The bottom end of the zip will extend past the marked end of the opening. Place the presser foot on the zip so that the coil is in the notch to the right of the needle. Stitch the zip in place between the slit marks (8). Close zip. Place the other zip tape face down on the front opening edge (right fabric side) and pin in place at the top (9). Open zip. Place the presser foot on the top end of the zip so that the coil is in the notch to the left of the needle. Sew the zip in place between the slit marks (10). Close zip. Lay dress front right sides together with dress back. Pin left side seam edges together, from upper edge to slit mark and from lower edge to slit mark. Stitch, stitching as close to last stitches of zip seams as possible, laying loose end of zip over seam allowance (11). Press seam allowances open and neaten edges.

Step 9 — Sleeves

Lay sleeve fronts right sides together with sleeve backs. Pin top sleeve seams. Stitch (12). Press seam allowances open and neaten edges. Fold sleeves lengthwise, right side facing in. Pin underneath sleeve seams. Stitch. Press seam allowances open and neaten edges.

Neaten lower edge of each sleeve. Press hem allowance to inside and stitch in place loosely by hand.

Step 10 — Setting in sleeves

Pin each sleeve to armhole, with right sides facing. Match seam number 5 on sleeve back and bodice back. Match side seams and sleeve seams and match seam number (6) on sleeve front and bodice front. Baste and stitch sleeve in places (13). Press seam allowances open from upper edge to beginning of underarm curve. Neaten edges of seam allowances.

Step 11 — Collar and neck edge

Lay collar pieces right sides facing. Pin edges together. Stitch, leaving joining edge open. Trim seam allowances and clip curves (14). Turn collar right side out. Press seamed edges. Baste open edges together. Pin collar right sides together with neck edge front edges of collar meet at centre front and seam marks meet top sleeve seams (15). Baste collar to neck edge.

Lay front facings right sides together with back facing. Pin shoulder edges together. Stitch shoulder seams (16). Press seam allowances open. Neaten inside edge of facing. Pin facing right sides together with neck edge, over collar, matching shoulder seams to markings/ top sleeve seams. Stitch. Trim seam allowances and clip curves (17). Turn facing to inside. Baste neck edge, turning collar up. Press. Topstitch neck edge close to collar joining seam. Sew inside edge of facing to seams.

Step 12 — Hem

At back vent, turn allowance out flat to the side again. Neaten hem allowance, press to inside, and stitch in place loosely by hand (18). Fold allowances of vent to inside again and sew to hem allowance.

BurdaStyle

5/2011 Dress with Peter Pan Collar