

5/2010 Dress with ruffled hem and sleeve

By: burda style magazine

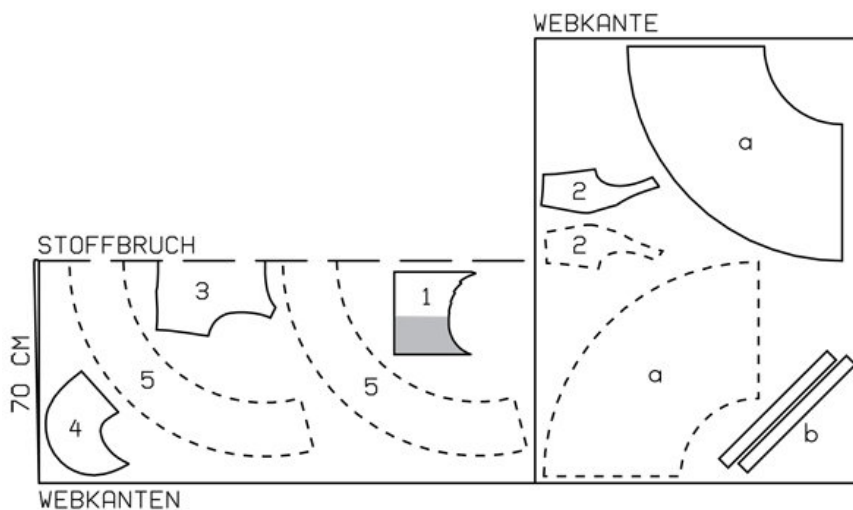
<http://www.burdastyle.com/projects/52010-dress-with-ruffled-hem-a>

Dress with ruffled hem and sleeve burda style magazine patterns FAQ

Materials

Bark crpe

Step 1 — Preparation



Trace the pattern pieces from the pattern sheet. Piece 5 is for view A only.

The buttonholes on piece 1 are marked for size 17. For sizes 18 — 21, mark the top buttonhole the same distance from neck edge as for size 17. The bottom buttonhole is in the same place for all sizes. Space the other buttonholes evenly in between

Step 2 — Cutting Out



Top fabric:

1 centre front 2x

2 side front 2x

3 back, on a fold 1x

4 cap sleeves 2x

a) skirt panel 2x

b) 2 bias strips for edges of armholes, 45 — 46 — 48 — 49 — 51 cm (17³/₄ — 18¹/₈ — 19 — 19¹/₄ — 20¹/₄ ins) long, 4 cm (1⁵/₈ ins) wide (incl. allowance).

Batiste (lining):

pieces 2, 3 and a.

View A only:

5 hem frill, on a fold 2x

Interfacing: See pattern layout. Iron Vilene Bias Tape onto neck and armhole edges of outer fabric pieces.

Step 4 — Pleats

Hand baste along marked pleat folds on centre fronts to make these lines visible on right fabric side. Fold front on first pleat fold, wrong side facing in. Press pleat and topstitch as marked on pattern. Then press and topstitch remaining pleats, one after the other. Press pleats to the side. Lay each side pleat forward again and pin. Stitch side fronts to centre fronts, from marking (seam number 1). Lay side pleats toward sides again. Press seam allowances onto centre pieces.

Step 5 — Darts and Shoulder Seams

â— Stitch darts in back and press toward centre. Stitch right side seam of bodice. Stitch shoulder seams.

Step 6 — Cap sleeves

Trim allowance on outer edge of cap sleeves to 7 mm (1/4 in) wide, press to inside, and stitch. Press allowance on straight back edge of cap sleeves to inside. Baste cap sleeves to neck edge, from each front section seam to back abutting line, with wrong side facing right side.

Step 7 — Bodice lining

Stitch darts and seams of bodice -lining, stitching side seam as mirror image of seam on outer fabric. Stitch lining right sides together with inside edges of facing. Lay self-facings outward. Lay lining right sides together with bodice. Stitch facings and lining right sides together with neck edge. Trim seam allowances. Turn facings and lining to inside and press edges. Baste facings and lining in place.

Step 8 — Bias strips

Fold bias strips for armholes in half lengthwise and press, right side facing out. Pin doubled bias strips to edges of armholes so that fold edge of strips lies on garment piece, 1 cm (3/8 in) past seam line. Turn in end of strip lying underneath at right side seam. Stitch along seam line. Trim -seam allowances. Turn bias strips to inside and press edges. Sew fold edge of strips to lining by hand.

Step 9 — Edgestitching cap sleeves

Edgestitch back edge of cap sleeves to back, at abutting line.

Step 10 — Buttonholes

Work buttonholes in right front. Lay centre right front on left front, matching centres. Baste lower edges together.

Step 11 — Stitching skirt to bodice

Stitch right side seam of skirt. Stitch skirt to dress bodice. Press seam allowances down.

Step 12 — Zipper

Sew invisible zip to left opening edges. Stitch left side seam from lower edge to zip. Turn in top ends of zip tapes and sew in place.

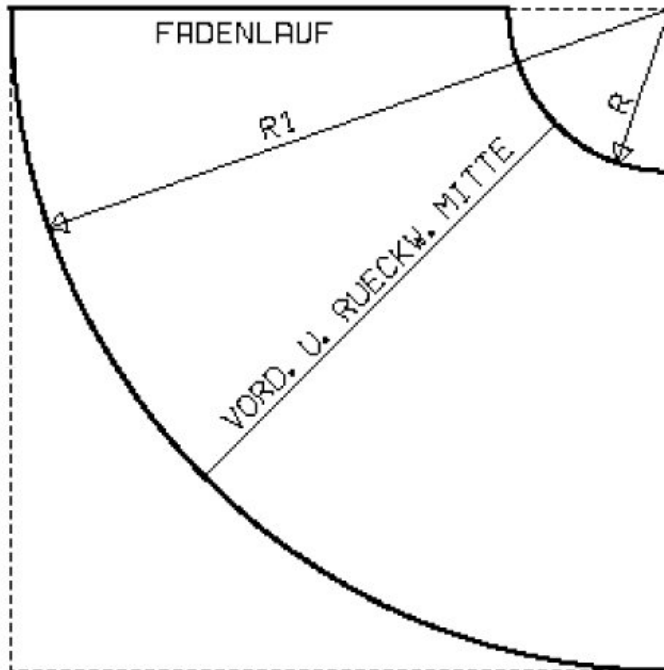
Step 13 — Hem frill

â— Stitch side seams of hem frill. Press allowance on lower edge of frill to inside, neaten, and stitch. Gather other edge of frill. Stitch frill to lower edge of dress.

Step 14 — Skirt lining

Stitch seams of skirt lining, leaving opening for zip. Place skirt lining inside dress, with wrong sides facing, and stitch to seam allowances of skirt joining seam, stitching as far as -possible at opening. Sew skirt lining to zip tapes.

Step 3 — Diagram



Follow the diagram to make a full-sized pattern piece for the skirt panel (a) as follows: On a large sheet of wrapping paper — the upper edge and the right edges must form a right angle — stretch a thread from the upper right corner to mark the radius[®] for the waist edge and (R1) for the hem line. The skirt lining panel should be 16 cm (63/8 ins) longer than given in the diagram.

Seam and hem allowances:
Seams, edges and hem 1.5 cm (5/8 in).

Radius for waist edge[®]
size 17: 22 cm, size 18: 23.2 cm
size 19: 24.5 cm, size 20: 25.8 cm
size 21: 27 cm
Radius for hem line (R1)
size 17: 65 cm, size 18: 66.2 cm
size 19: 67.5 cm, size 20: 68.8 cm

size 21: 70 cm

Cut skirt lining panel 16 cm (63/8 ins) longer.

BurdaStyle

5/2010 Dress with ruffled hem and sleeve