

4/2010 Tie Skirt

By: burda style magazine

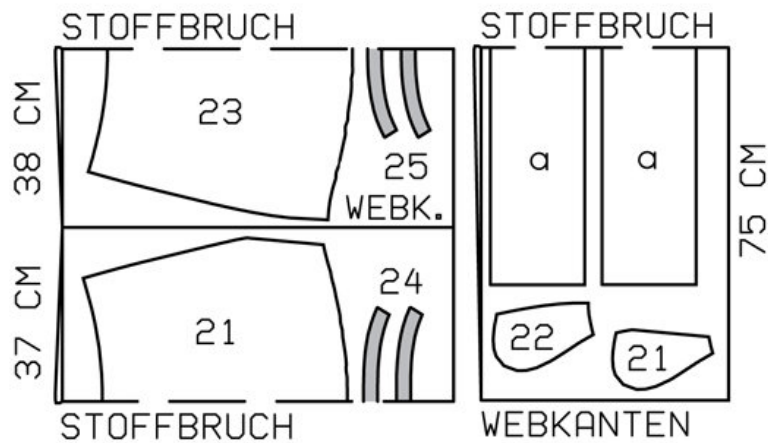
<http://www.burdastyle.com/projects/42010-tie-skirt>

Tie Skirt burda style magazine patterns FAQ

Materials

Poplin

Step 1 — Preparation



111 B 72,76

Trace the pattern pieces from the pattern sheet. Trace the pocket piece from piece 21 as a separate pattern piece.

Seam and hem allowances:

Seams and edges 1.5 cm (5/8 in), hem 3 cm (1 ins), (flare hem allowances).

Step 2 — Cutting Out



21 front skirt panel, on a fold 1x

22 side hip yoke with

23 back skirt panel, on a fold 1x

24 front waistband, on a fold 2x

25 back waistband, on a fold 2x

View B only:

a) 2 tie band pieces, 98

100 102 104 106 cm

(383/4 391/2 401/4 41

413/4 ins) long, 20 cm (8 ins) wide.

Interfacing: See pattern layout.

Step 3 — Hip yoke pockets

Stitch pocket pieces to pocket opening edges of front skirt panel. Lay pocket pieces up and stitch to seam allowances, close to seam. Turn pocket pieces to inside. Pin pocket opening edges to side hip yokes at placement lines. Stitch inside edges of pocket pieces together. Baste pocket pieces to wrong side of front skirt panel.

Step 4 — Pleats

Fold pleats in skirt panels in arrow direction and baste.

Step 5 — Right side seam

Stitch right side seam. Press seam allowances open.

Step 6 — Waistband, invisible zip, left side seam

Stitch right side seam on outer waistband unit and stitch seam on inside waistband unit as mirror image. Stitch outer waistband to upper edge of skirt. Press -seam allowances of joining seam onto waistband. Sew invisible zip to left opening edges and to edge of outer waistband. Stitch left side seam from lower edge to zip. Pin inside waistband unit right sides together with upper edge of outer waistband. Turn inside waistband back at edge of zip opening, about 5 mm (3/16 in) before edge, and pin to upper edge of waistband. Lay allowances of skirt at edges of opening outward and pin to upper edge of waistband, over inside waistband. Stitch along upper edge of waistband. Turn allowances at edges of opening to inside. Lay inside waistband up and stitch to seam allowances, close to seam, as far as possible. Turn inside waistband to inside and sew to zip tapes. Work from right side of skirt to stitch along line of waistband joining seam.

Step 7 — Hem

Press hem allowance to inside and stitch 2.5 cm (1 in) from fold edge.

Step 8 — Tie band

Stitch tie band pieces together to one long strip. Press seam allowances to one side. Trim seam allowance which lies below to a width of 5 mm (3/16 in). Turn in raw edge of seam allowance which lies on top and baste. Stitch from right side, 7 mm (1/4 in) from fold edge. Press allowances on all edges of tie band to inside, turn in and stitch. Stitch tie band to waistband as for view A (in line of previous stitching).

BurdaStyle

4/2010 Tie Skirt