

Sean Skirt

By: burdastyle

<http://www.burdastyle.com/projects/sean-skirt>



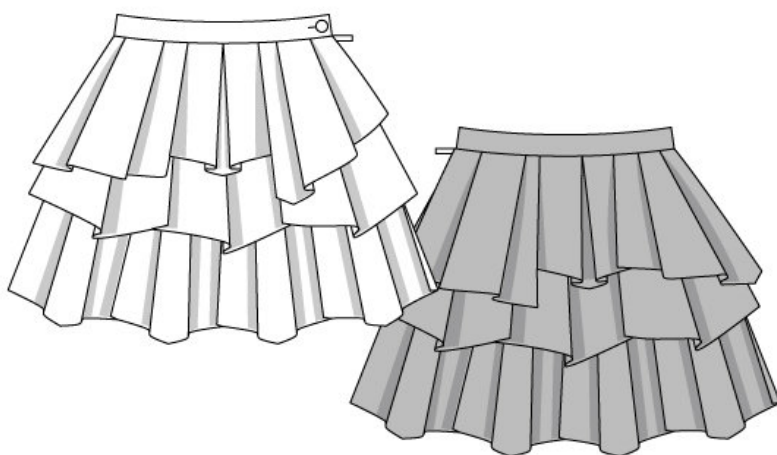
This beautiful sewing pattern was designed by Sean Cabezas, a senior Fashion Design major at Parsons The New School for Design. We wanted to offer an outsider's fresh take on fashion, and we are in love with the outcome! Inspired by dinosaur scales, this avant-garde skirt has 3 tiers consisting of multiple "scales" or

hexagonal shapes of fabric. We made our sample in black hammered silk, but other silks could work just as well. You could also experiment with other types of drape-y, lightweight fabrics, too. Please Note: The pattern indicates using a button for the closure, but you may find it more flattering to use a hook & eye clasp if you are not so keen on making button holes or having an exposed button. P.S. – Get the sewing pattern for the awesome belt seen in the photos, here.

Materials

Pattern Sizes: 34-44 Black Hammered Silk: 2 1/2 yards (2,20 m.) – 3 yards (2,70 m.) 1 Button OR A Hook & Eye Clasp 1 invisible zipper Interfacing

Step 1 — PATTERN



PATTERN

- 1 Front skirt panel 1x
- 2 Back skirt panel 1x
- 3 Waistband 1x
- 4 Pleat piece I 2x
- 5 Pleat piece II 2x
- 6 Pleat piece III 2x
- 7 Pleat piece IV 6x
- 8 Pleat piece V 8x

Fabrics: Cotton fabrics, crepe fabrics, silk fabrics

Zipper 9â' (22 cm) long

The patterns can be printed out at the copy shop. If you decide to print them at home, follow these instructions:

Paper cut for ANSI A (German DIN A4) prints:

The patterns are printed out on 24 sheets with a thin frame. Wait until all sheets are printed out. Arrange the sheets so that they fit together (see additional page with the overview of the prints). Fold the single sheets on the upper and right edge along the thin frame lines. Begin with the left lower sheet and then tape the frame lines together precisely.

Step 2 — ADJUST PATTERN SIZES



ADJUST PATTERN SIZES

Select your size according to the Burda-dimension table: dresses, blouses, jackets and coats according to the bust size, trousers and skirts according to the hip width. Change the pattern to fit your measurements if they deviate from the Burda-size chart.

Cut out the pattern pieces 1 to 8 for the skirt according to your size.

Refer to our 'Adjust patterns for mixed sizes' technique.

LENGTHENING OR SHORTENING THE PATTERN PIECES

Our pattern is calculated for a height of 5' 6" (168 cm). If you are taller or shorter, you can adjust the pattern pieces along the lines marked "lengthen or shorten here". This way the proper fit is maintained. Always adjust all pattern pieces along the same line to the same degree.

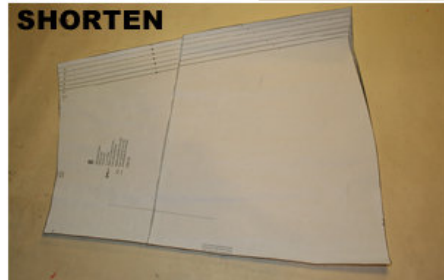
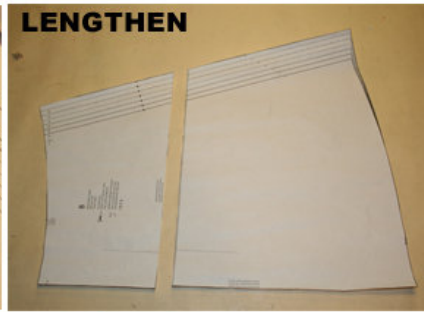
How to lengthen and shorten pattern pieces:

Cut the pattern pieces along the marked lines

To lengthen, slide the two halves of the pattern piece as far apart as necessary.

To shorten, overlap the two halves of the pattern piece as far as necessary. Blend the side edges.

Step 3 — CUTTING OUT | FOLD (' ' ' ')



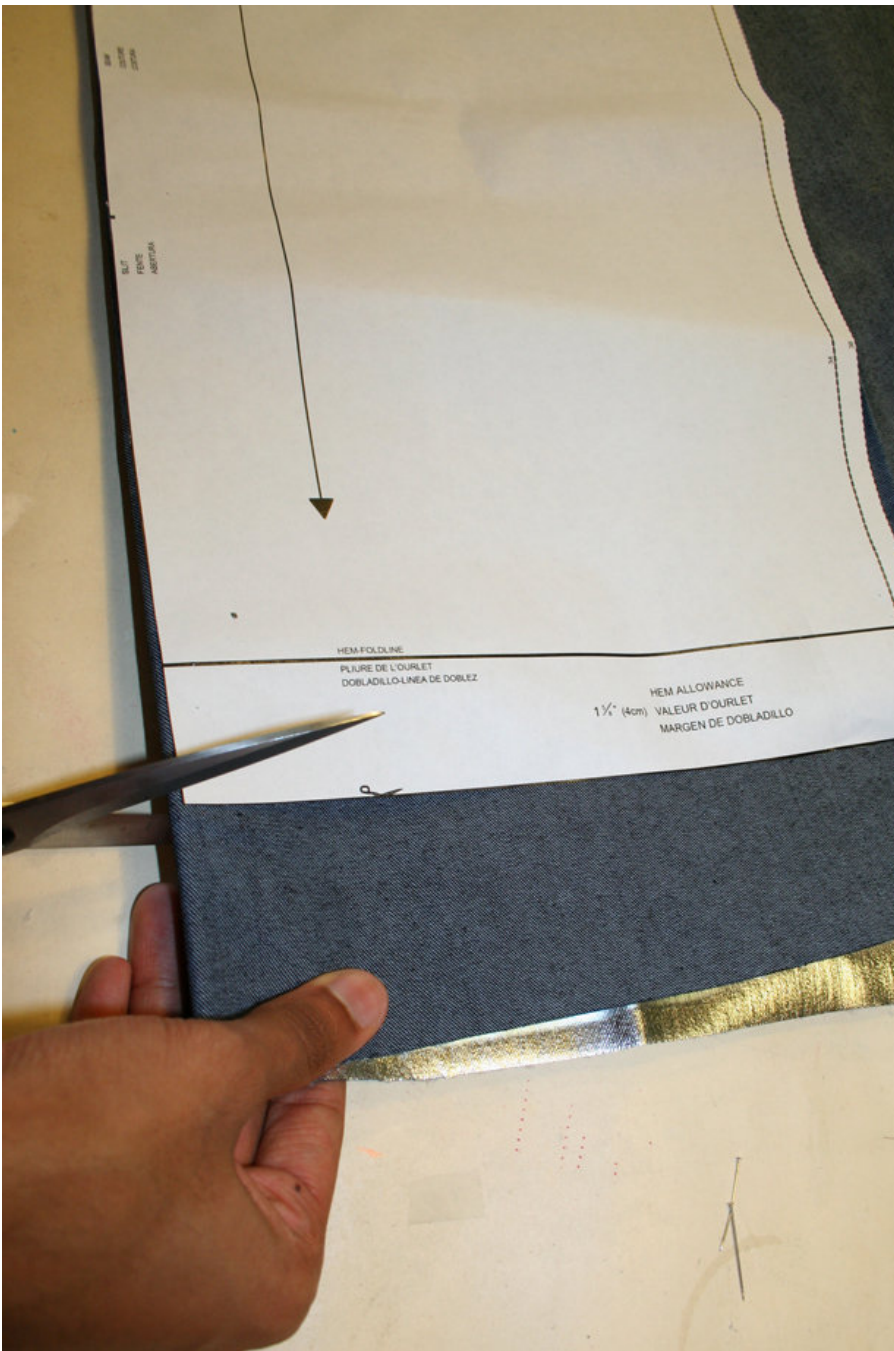
CUTTING OUT

FOLD () means: Cut on the fold, the fold being the center of the pattern piece, but never a cut edge or seam. The piece should be cut double, with the fold line forming the center line. Pattern pieces that are outlined with a broken line in the cutting diagrams are to be placed face down on the fabric. The cutting diagrams on the pattern sheet show how the pattern pieces should be placed on the fabric.

The cutting diagrams show the placement of the pattern on the fabric.

For a single layer of fabric, the pattern pieces are pinned to the right side. For double layers of fabric, the right sides are facing and the pattern pieces are pinned to the wrong side. The pattern pieces that are shown extending over the fold of the fabric in the cutting diagram should be cut last from a single layer of fabric.

Step 4 — SEAM AND HEMLINE ALLOWANCES



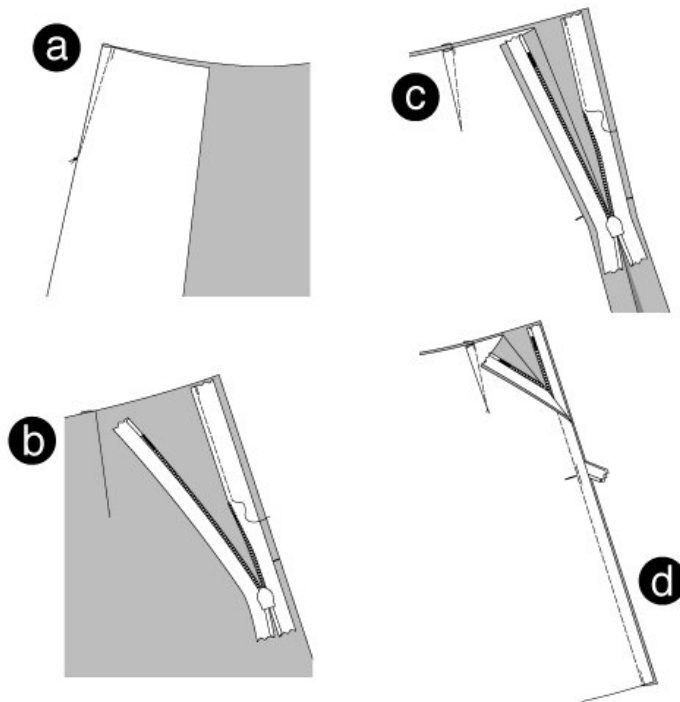
SEAM AND HEMLINE ALLOWANCES are included on an average:
1 5/8" — 8" (4 cm) for hem, 5/8" (1.5 cm) for all edges and stitches. Using BURDA copying paper, transfer the lines and signs of the pattern onto the wrong side of the fabric. Instructions can be found in the packaging.

Sewing

While sewing, the right sides of the fabric are facing.

Transfer all lines of the pattern onto the right side of the fabric using chalk.

Step 5 — SKIRT | DARTS



SKIRT | DARTS

Stitch the darts on front and back skirt panels to a point. Knot thread ends. Fold the darts towards the center front and back accordingly. Press. (a)

RIGHT SIDE SEAM

Position the front and back skirt panels together, right sides facing. Pin the right side seam (seam number 1) and stitch. Neaten seam allowances and press apart.

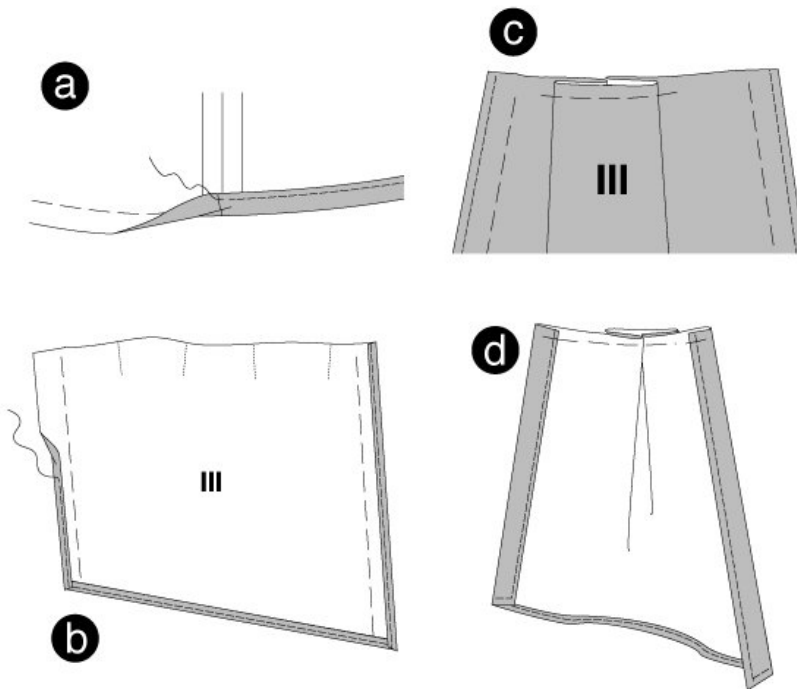
LEFT SIDE SEAM / ZIPPER (seam covered)

Use a seam covered zipper that won't be visible after applying. The zipper should be slightly longer than the opening. It should be applied before the seam, below the opening is stitched. You will need a zipper foot for your sewing machine. Neaten allowances of side edges.

Open the zipper and position it with its right side on the allowance of the side opening edge. The little zipper teeth have to meet the opening edges. Stitch the zipper along the teeth row, using a zipper foot. (b) Apply the other zipper strap onto the other edge of the opening ©. On both edges, stitch from the top to the opening sign (arrow). Since the zipper teeth can roll up, use the zipper foot to keep them flat. Close zipper.

Position the skirt panel together, right sides facing. Stitch the left side seam from the bottom to the opening sign. Slightly pull the zipper end away when stitching. Secure seam ends. Press allowances apart. (d)

Step 6 — HEMLINE | PLEAT PIECES



HEMLINE

Neaten hemline. Fold inside, pin and press. Stitch the bottom skirt edge $1\frac{1}{2}$ " (1.2 cm) wide, thereby enclosing the hemline. (a)

PLEAT PIECES

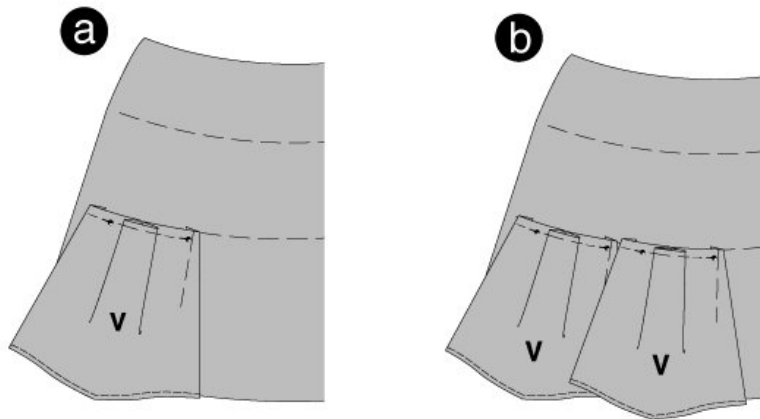
Neaten side and bottom edges of all pleat pieces. For pleat pieces IV and V, neaten the top edges as well.

On all pleat pieces, fold the allowances of the bottom edges $\frac{1}{4}$ " (0.5 cm) inside and pin. Then do the same to the allowances of the side edges. Press all edges. Topstitch all edges narrowly, enclosing the allowance. (b)

Position all pleats on the pleat pieces. Do so from the right fabric side, following the markings (arrows). Pin along the top edge. ©

Fold the side edges of the pleat pieces (except on piece II) inside along the fold line. Pin along the top edge. (d)

Step 7 — STITCHING PLEAT PIECES | BOTTOM LAYER OF SKIRT (pleat piece V)



STITCHING PLEAT PIECES

The wrong fabric side of the pleat pieces faces the right fabric side of the skirt.

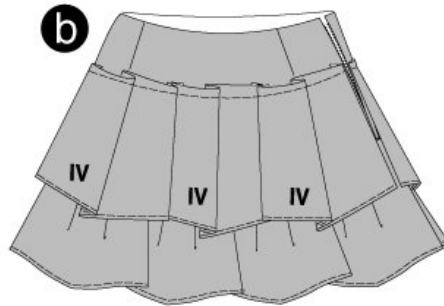
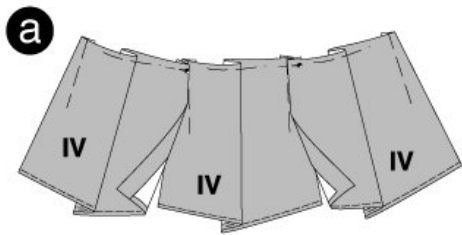
Tip: To bring the pleats into order place the skirt on the ironing board.

BOTTOM LAYER OF SKIRT (pleat piece V)

Position pleat piece V on the front skirt panel, meeting the bottom seam line. The side edge meets the right side seam. (a)

Position all pleat pieces V next to each other on the skirt. The top edges meet the seam line. The left sides of each piece overlap the right side of the previously placed piece. When placing the last pleat piece V, push its right side under the left side of the first V piece. Pin along the top edge and stitch. (b)

Step 8 — MIDDLE SKIRT LAYER (pleat piece IV)

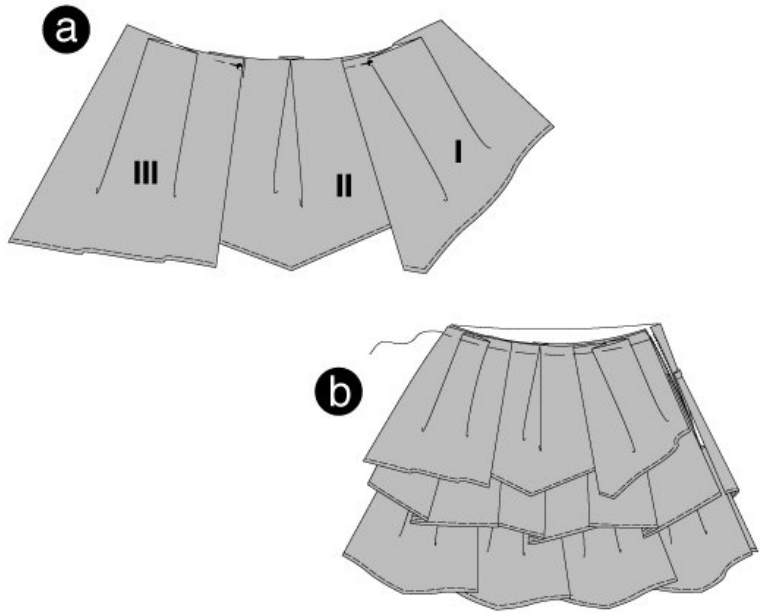


MIDDLE SKIRT LAYER (pleat piece IV)

On the front skirt panel, position two pleat pieces IV sideways on a third piece IV, already placed in the center. Repeat the same on the back panel of the skirt. (a)

Position the pleat pieces on the back skirt panel, meeting the marked line. Then position the pieces on the front skirt panel. The side edges meet the zipper opening. Stitch along the top edge of the pleat pieces. (b)

Step 9 — TOP SKIRT LAYER (pleat pieces I, II and III)

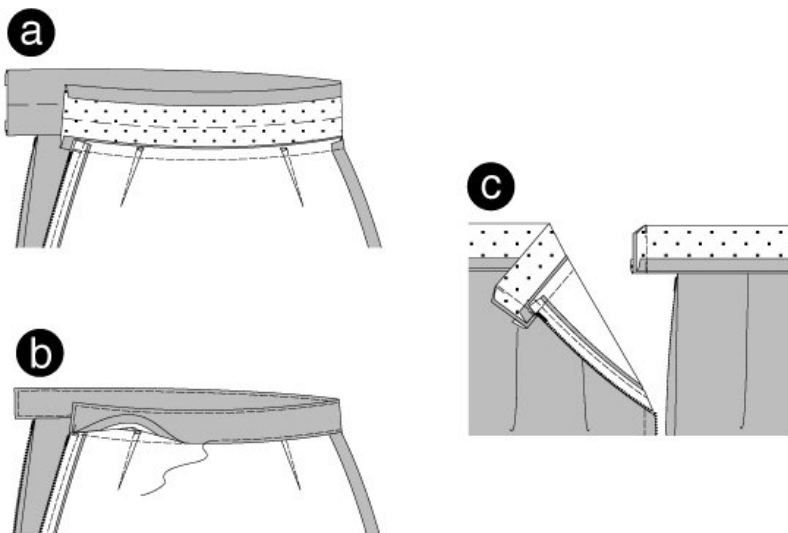


TOP SKIRT LAYER (pleat pieces I, II and III)

Position pleat piece I sideways on the left edge of pleat piece II, meeting the marked line. Position pleat piece III sideways on the right edge of piece II. Repeat that with the other pieces on the back of the skirt. (a)

Position the pleat pieces onto the top edge of the skirt. The side edges meet the zipper opening. (b)

Step 10 — WAISTBAND | BUTTON HOLE



WAISTBAND

Position the interfacing onto the wrong side of the waistband. Press.

Position the waistband on the top edge of the skirt, right sides facing. Allow the underlay at the back opening edge to overlap. Stitch, enclosing the pleat pieces. Press the allowances inside the waistband. Fold the allowance of the long waistband edge inside and press. (a)

Fold the waistband along the fold line, right sides facing. Stitch the short edges together. Turn waistband. Position the inner edge of the waistband on the seam line. (b) Topstitch waistband narrowly, enclosing the inner side of the waistband. ©

Work a BUTTON HOLE into the front waistband edge. Apply BUTTON on the underlay.

BurdaStyle

Sean Skirt