

Lindsey

By: burdastyle

<http://www.burdastyle.com/projects/lindsey>

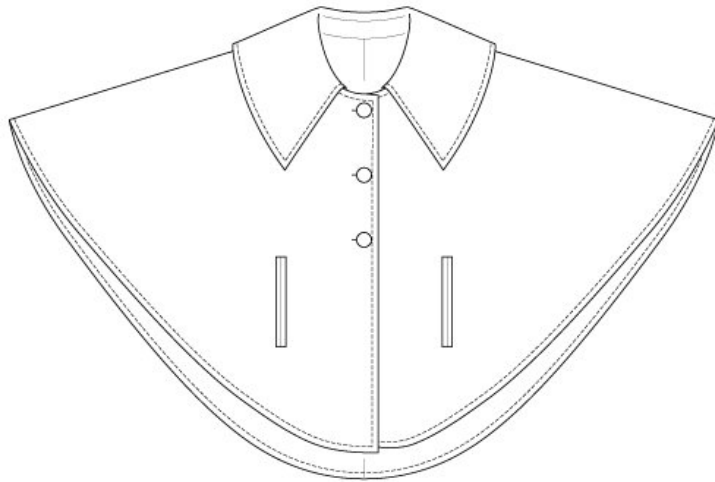


This super cute Cape is made out of maroon herringbone wool and lined with red herringbone. It has this great English country-living feel that makes you think of a walk in the woods. A creative transition piece from a light jacket to your big winter coat, this really can be worn in any season depending on your fabric choices.

Materials

2 – 2 7/8 yards (1,80 – 2,55 meters) SELF, 1 3/4 yards (1,55 metes) LINING Materials Used: Wool, Silk Lining, Buttons

Step 1 — PATTERN



PATTERN

2 – 2 7/8 yards (1,80 – 2,55 meters) SELF

1 3/4 yards (1,55 metes) LINING

Materials Used: Wool, Silk Lining, Buttons

1 Cape 2x

2 Collar 2x

3 Collar stand 2x

4 Front placket 2x

5 Back placket 1x

6 Piping 4x

7 Pocket pouch 2x

8 Lining cape 2x

Fabrics: Tweed, Boucl

The patterns can be printed out at the copy shop. If you decide to print them at home, follow the instructions:
Paper cut for ANSI A (German DIN A4) prints:

The patterns are printed out on 54 sheets, with a thin frame. Wait until all sheets are printed out. Arrange the sheets so that they fit together (see additional page with the overview of the prints). Fold the single sheets on the upper and right edge along the thin frame lines. Begin with the left lower sheet and then tape the frame lines together precisely.

Step 2 — ADJUST PATTERN SIZES



Select your size according to the Burda-dimension table: dresses, blouses, jackets and coats according to the bust size, trousers and skirts according to the hip width. Change the pattern to fit your measurements if they deviate from the Burda-size chart. Cut out the pattern pieces 1 to 8 for the cape according to your size. Sizes 6 to 24 (EU 38 to 56): Mark the button holes on piece 1. The space between the top button hole and the neckline is the same as marked on size 4 (EU 36). The bottom button hole is placed at the same spot for all sizes. Mark the center button hole in between the top and bottom one.

Refer to our [Adjust patterns for mixed sizes](#) technique.

LENGTHENING OR SHORTENING THE PATTERN PIECES

Our pattern is calculated for a height of 5'6" (168 cm). If you are taller or shorter, you can adjust the pattern pieces along the lines marked "lengthen or shorten here". This way the proper fit is maintained. Always adjust all pattern pieces along the same line to the same degree.

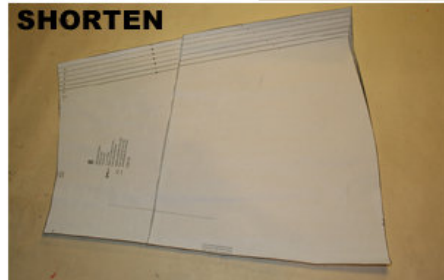
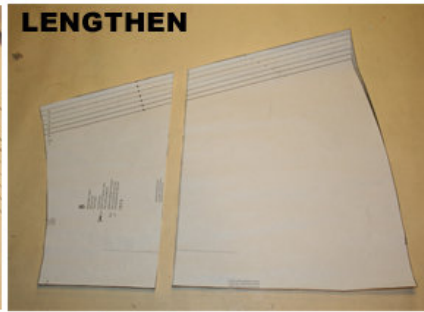
How to lengthen and shorten pattern pieces:

Cut the pattern pieces along the marked lines

To lengthen, slide the two halves of the pattern piece as far apart as necessary.

To shorten, overlap the two halves of the pattern piece as far as necessary. Blend the side edges.

Step 3 — CUTTING OUT

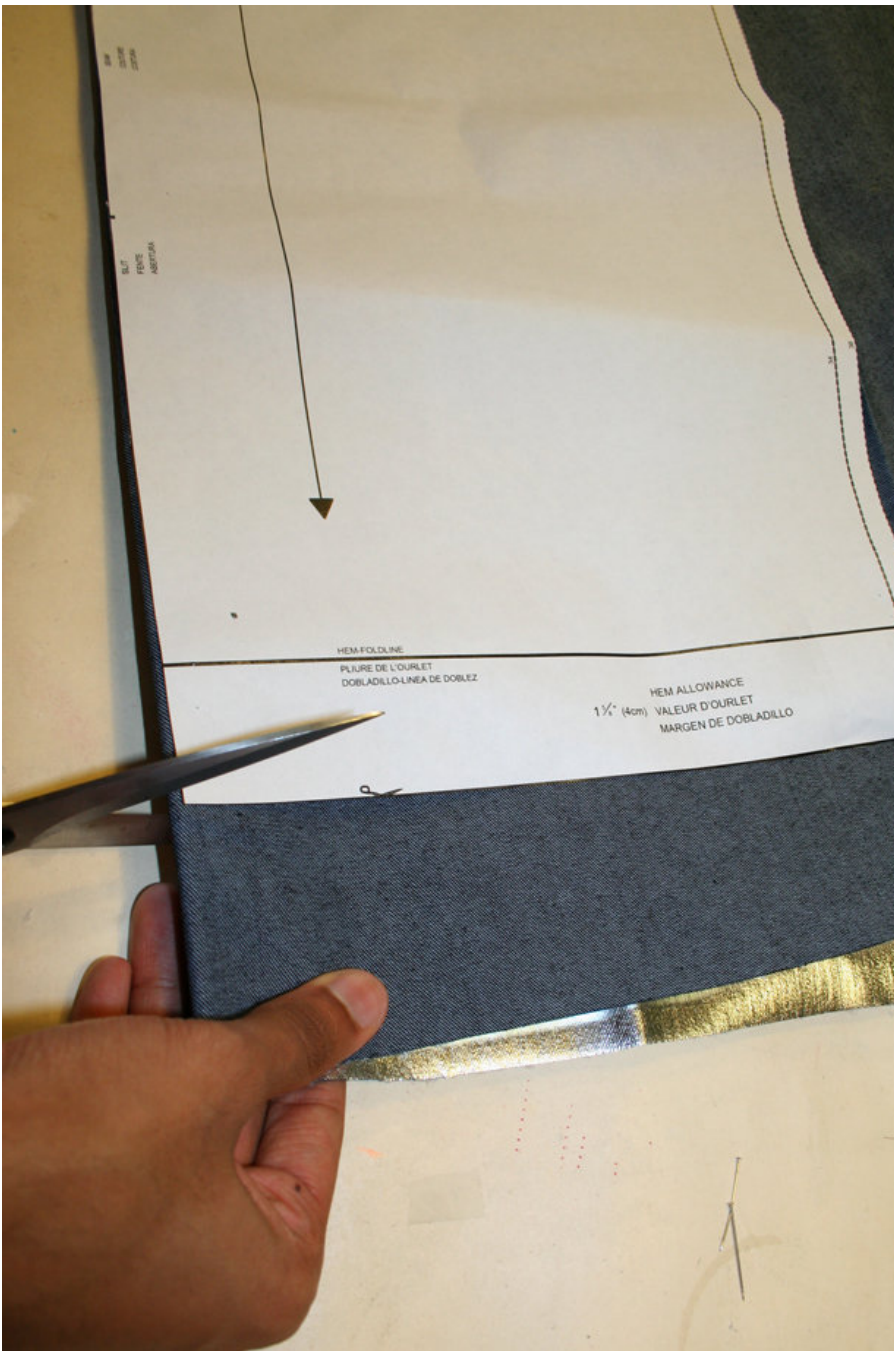


FOLD () means: Cut on the fold, the fold being the center of the pattern piece, but never a cut edge or seam. The piece should be cut double, with the fold line forming the center line. Pattern pieces that are outlined with a broken line in the cutting diagrams are to be placed face down on the fabric. The cutting diagrams on the pattern sheet show how the pattern pieces should be placed on the fabric.

The cutting diagrams show the placement of the pattern on the fabric.

For a single layer of fabric, the pattern pieces are pinned to the right side. For double layers of fabric, the right sides are facing and the pattern pieces are pinned to the wrong side. The pattern pieces that are shown extending over the fold of the fabric in the cutting diagram should be cut last from a single layer of fabric.

Step 4



SEAM AND HEMLINE ALLOWANCES are included on an average:
1 5/8" — 8" (4 cm) for hem, 5/8" — (1.5 cm) for all edges and stitches. Using BURDA copying paper, transfer the lines and signs of the pattern onto the wrong side of the fabric. Instructions can be found in the packaging.

LINING

Cut lining for pieces 7 and 8 twice. See cutting diagram.

INTERFACING

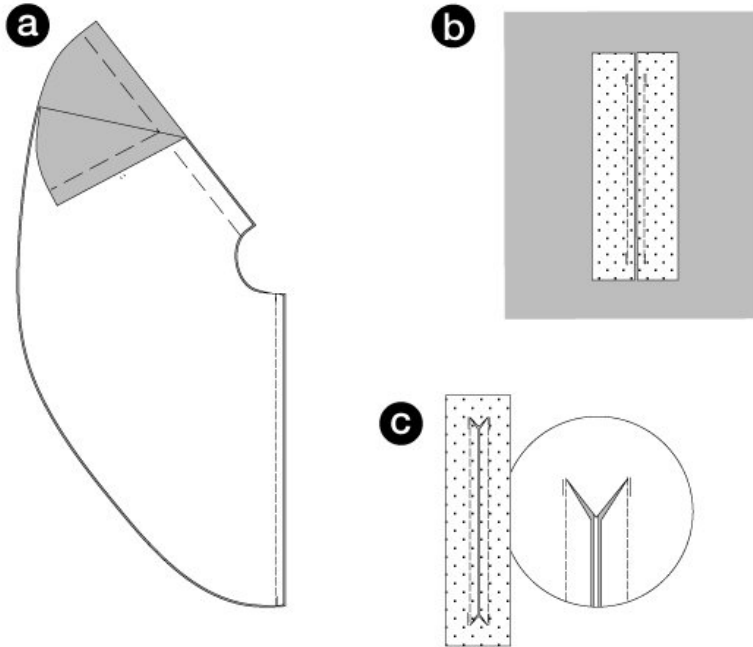
Cut out the interfacing pieces and press onto the wrong side of the fabric.

Sewing

While sewing, the right sides of the fabric are facing.

Transfer all lines of the pattern onto the right side of the fabric using chalk.

Step 5



CENTER BACK SEAM

Position the cape pieces together, right sides facing. Stitch center seam. Press allowances apart. (a)

PIPING POCKETS

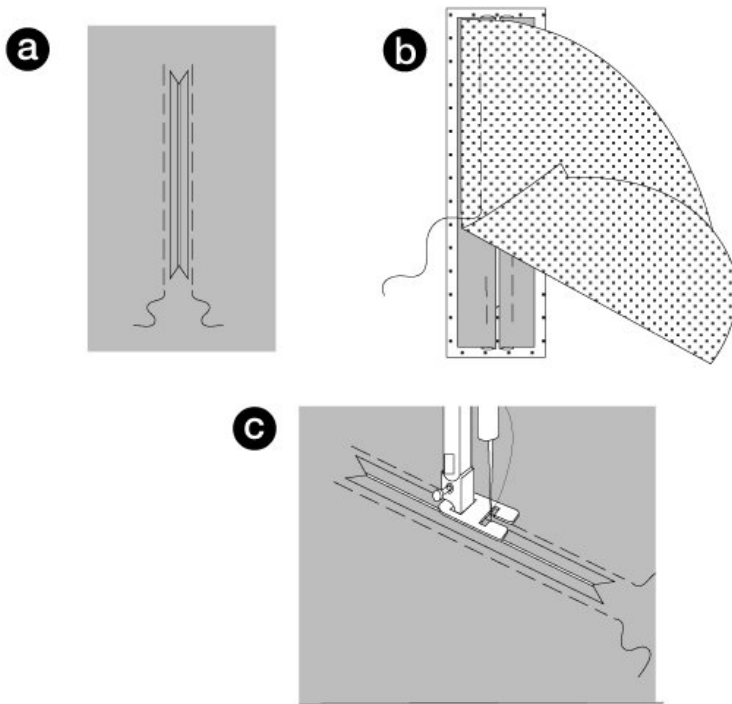
Cut out interfacing strips $1\frac{1}{2}$ " wide (4 cm) and $1\frac{1}{4}$ " longer than the pocket opening width. Then press the strips on the marked lines onto the wrong side of the front pieces.

Position the piping strips on both sides of the cutting line. Topstitch $\frac{1}{4}$ " (0.5 cm) wide. Secure seam ends. (b)

Cut the marked lines on the front piece between the stitch lines. Then cut diagonally from the cutting line to the stitch line to create little triangles. Don't snip into the piping. Fold the piping strips over the seam line.

©

Step 6

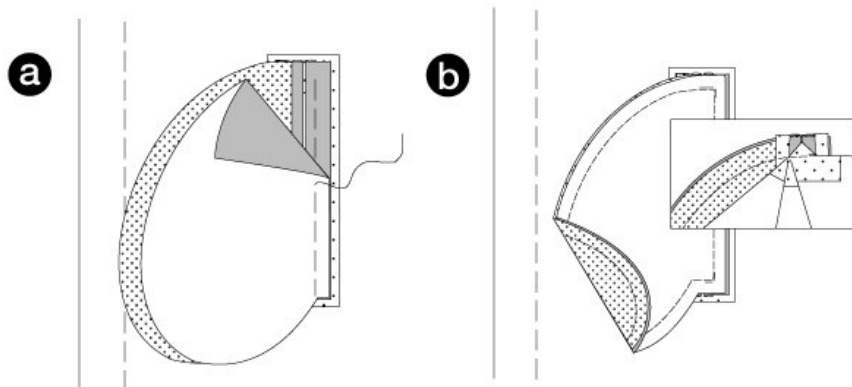


Turn the piping inside. Pin along the right fabric side so that they are equally wide and fill the opening. Press. (a)

Position and pin the lining pocket pouch on the left front piece. The straight edge of the pocket piece has to be positioned over the seam line of the front piping. (b)

From the right side of the fabric stitch along the seam line of the front piping. Enclose the pocket pouch. Turn the pocket pouch to the front and press. ©

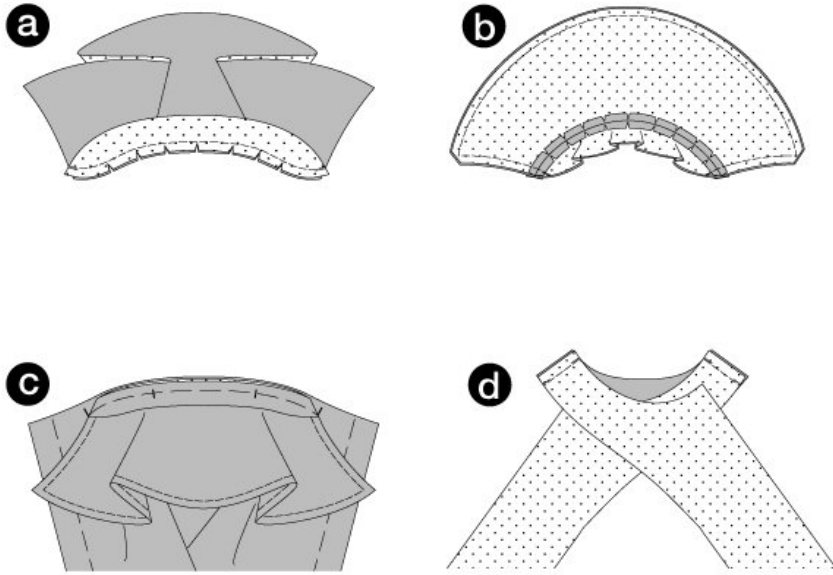
Step 7



Position and pin the fabric pocket pouch in a way that the straight edge of the pocket piece has to be positioned over the seam line of the front piping. From the right fabric side stitch along the seam line of the side piping, enclosing the pocket pouch. (a)

Turn the triangles at the end of the cutting line inside. Position pocket pouch pieces together, trim and stitch along the lining piece seam. Start and end stitching at the seam line of the side piping. Also, stitch over the triangles. (b)

Step 8



COLLAR WITH STAND

Position the stand and collar pieces together (seam number 1), right sides facing. Stitch. Trim allowances, snip in and press apart. (a)

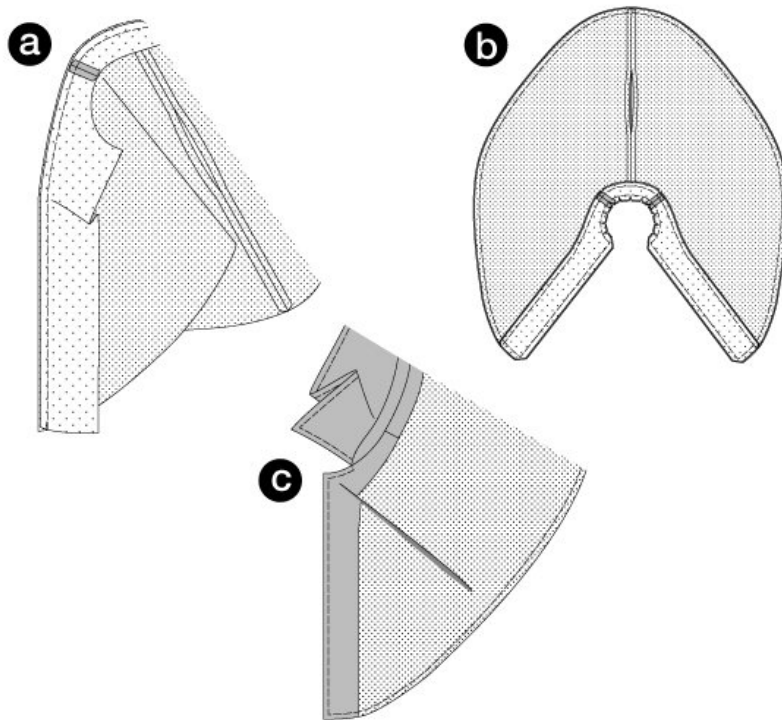
Position the collar pieces together, right sides facing. Pin the edges together and stitch. Trim allowances and cut the corners at a slant. Turn the collar. Pin edges, press and stitch 1/4" (0.7 cm) wide. Pin open edges. Position the collar stand seam lines together and pin. Stitch. (b)

Position the collar between the cross lines on the neckline (seam number 2), right sides facing. The cross lines of the collar stand meet the cross lines (shoulder) at the neckline. ©

PLACKETS

Position the front and back plackets together, right sides facing. Stitch shoulder seams (seam number 3). Press allowances apart. Neaten the inner placket edge. (d)

Step 9 — LINING



CENTER BACK SEAM

Position the lining cape pieces together, right sides facing. Stitch the center seam and leave an 8â– opening (to turn it inside out later on). Secure seam ends and press allowances apart.

Pin the placket on the lining (seam number 5), right sides facing. The shoulder seams meet the cross lines. Stitch. Trim allowances, snip in and press inside the lining. (a)

DOUBLE CAPE

Position the lined placket above the collar, onto the neckline and the front and bottom cape edges (seam number 4). The right sides are facing. Stitch. Trim allowances, snip in and cut the corners at a slant. (b)

Turn the cape inside out through the opening at the lining. Pin the edges and press. Stitch front edges, bottom edges and neckline 1/4â– (0.7 cm) wide. Stitch the opening at the lining piece narrowly. ©

Work **BUTTON HOLES** inside the right front edge. Apply **BUTTONS** onto the left center edge of the front piece.

BurdaStyle

Lindsey