

Paola

By: burdastyle

<http://www.burdastyle.com/projects/paola>



At last, a wrap dress! And not just any wrap dress: with crisp lines and elegant structure, this is fresh but classic version.

Materials

silk shantung, self-made piping, fabric-covered buttons, snaps

Step 1

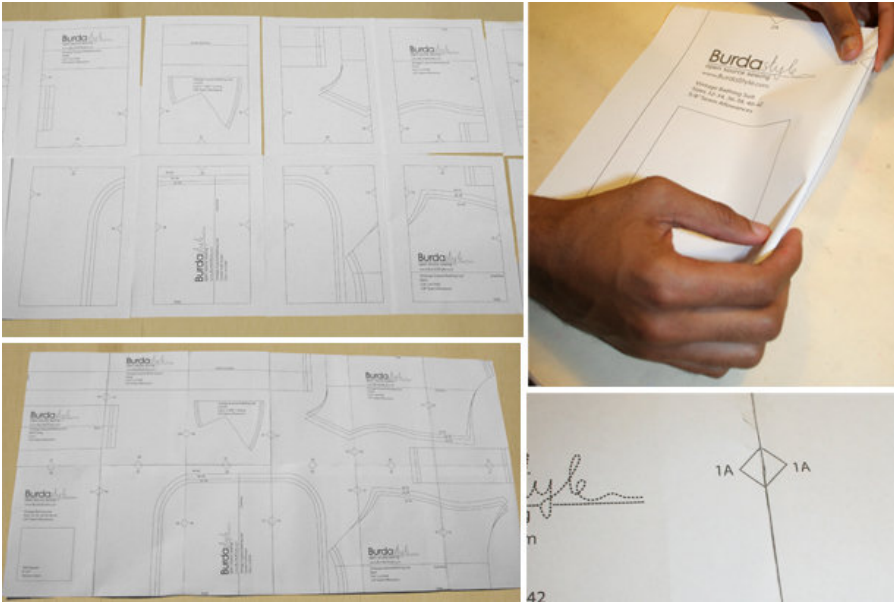


Pattern

- 1 Front 2x
- 2 Back 1x
- 3 Front inset 2x
- 4 Back inset 2x
- 5 Sleeve 2x
- 6 Cuff 8x (4 interfaced on wrong side)
- 7 Collar 4x (2 interfaced on wrong side)
- 8 Belt 2x
- 9 Front facing 2x
- 10 Back facing 1x
- 11 Sleeve hem facing 2x

Materials: 2 1/2 yards material, 10 buttons, Interfacing, 5 sets of snaps.
Follow cutting layout on pattern PDF printout.

Step 2

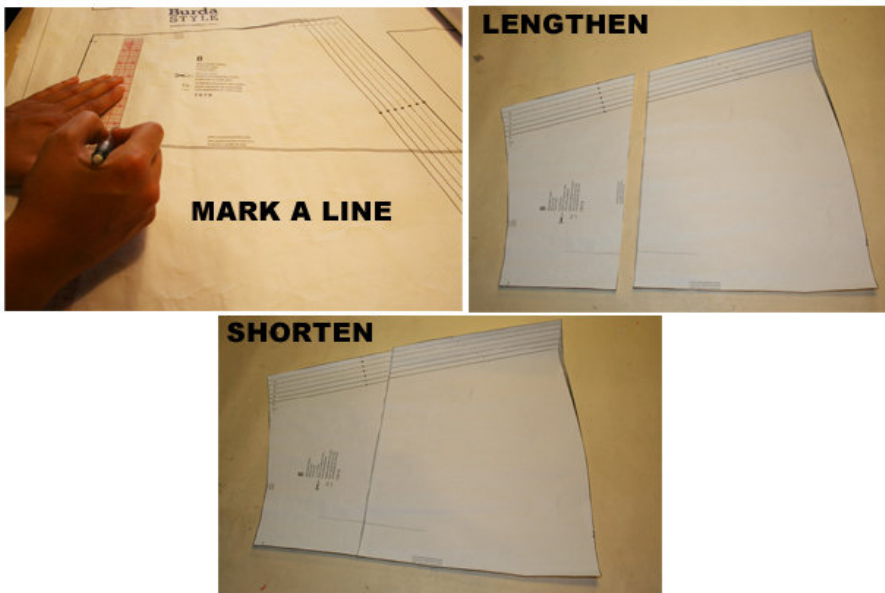


This pattern is only available as a print from home option:

Paper cut for ANSI A (German DIN A4) prints:

The patterns are printed out on 55 sheets with a thin frame. Wait until all sheets are printed out. Arrange the sheets so that they fit together (see additional page with the overview of the prints). Fold the single sheets on the upper and right edge along the thin frame lines. Begin with the left lower sheet and then tape the frame lines together precisely.

Step 3



ADJUST PATTERN SIZES

Select your size according to the Burda-dimension table: dresses, blouses, jackets and coats according to the bust size, trousers and skirts according to the hip width. Change the pattern to fit your measurements if they

deviate from the Burda-size chart. Cut out the pattern according to your size. Refer to our “ Adjust patterns for mixed sizes” technique.

LENGTHENING OR SHORTENING THE PATTERN PIECES

Our pattern is calculated for a height of 5’ 6” (168 cm). If you are taller or shorter, you can adjust the pattern pieces along the lines marked “lengthen or shorten here”. This way the proper fit is maintained.

Always adjust all pattern pieces along the same line to the same degree.

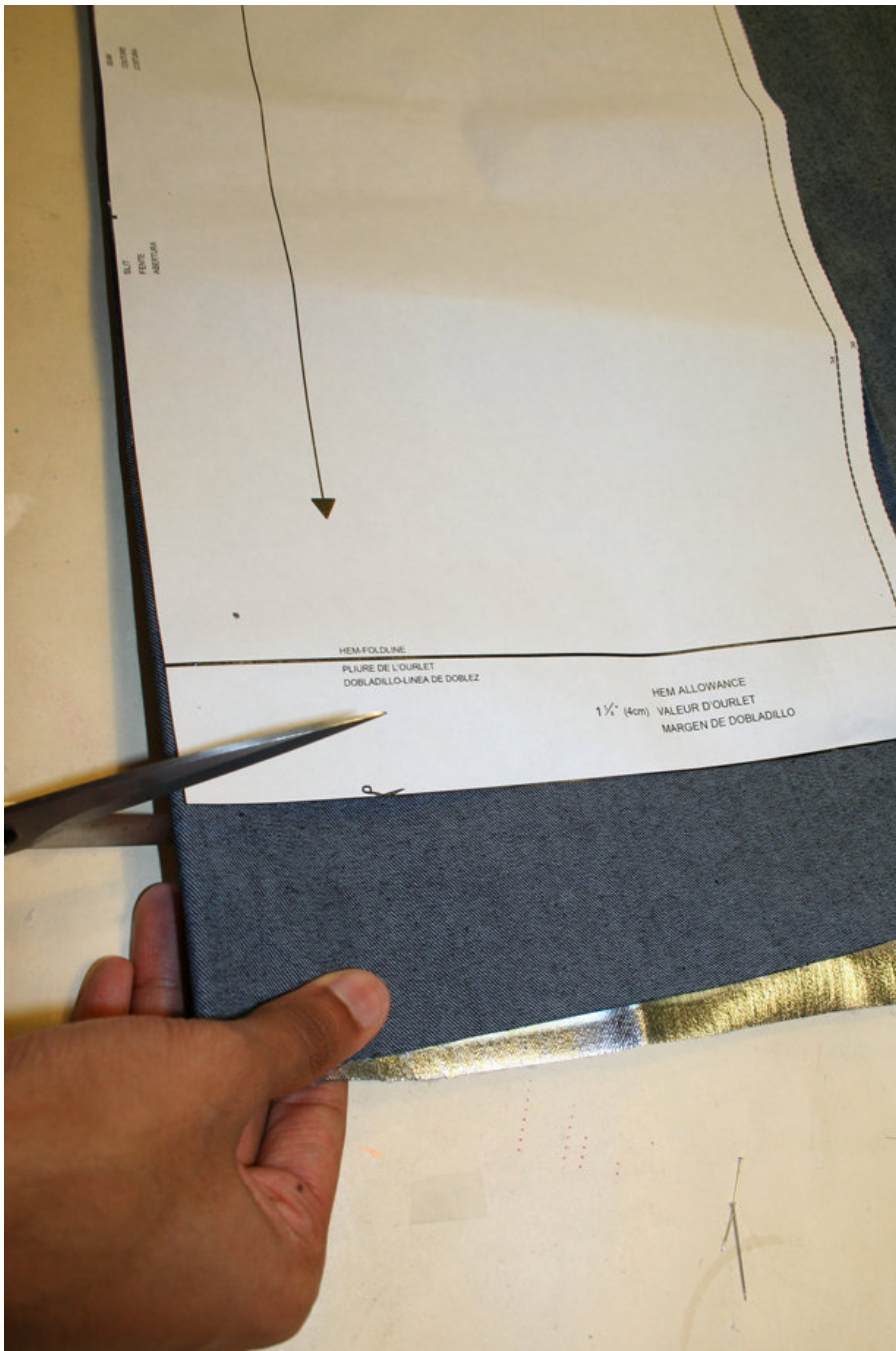
HOW TO LENGTHEN AND SHORTEN PATTERN PIECES:

Cut the pattern pieces along the marked lines

To lengthen, slide the two halves of the pattern piece as far apart as necessary.

To shorten, overlap the two halves of the pattern piece as far as necessary. Blend the side edges.

Step 4



CUTTING OUT

FOLD () means: Cut on the fold, the fold being the center of the pattern piece, but never a cut edge or seam. The piece should be cut double, with the fold line forming the center line. Pattern pieces that are outlined with a broken line in the cutting diagrams are to be placed face down on the fabric. The cutting diagrams on the pattern sheet show how the pattern pieces should be placed on the fabric.

The cutting diagrams show the placement of the pattern on the fabric.

For a single layer of fabric, the pattern pieces are pinned to the right side. For double layers of fabric, the right sides are facing and the pattern pieces are pinned to the wrong side. The pattern pieces that are shown extending over the fold of the fabric in the cutting

diagram should be cut last from a single layer of fabric.

Step 5

SEAM AND HEMLINE ALLOWANCES are included on an average:

1 1/4" (3 cm) hemline, 5/8" (1.5 cm) for all edges and stitches. Using BURDA copying paper, transfer the lines and symbols of the pattern onto the wrong side of the fabric. Instructions can be found in the packaging.

INTERFACING

Press the interfacing pieces (indicated in the first step) onto the wrong side of the fabric.

SEWING

While sewing, the right sides of the fabric are facing.

Transfer all lines of the pattern onto the right side of the fabric using basting stitches.

Step 6

Inset Pleats

Press Insets (pattern piece 3) along 'Fold' lines, towards the center on the face side. Press hem (1 1/4") to wrong side. Now, sew Inset to Front (pattern piece 1), face to face, until mark. Fold dart as marked; it aligns with the seam of the inset. Sew dart.

Repeat these steps on Back inset (pattern piece 4) and Back (pattern piece 2), except the dart on the back is a released tuck. Sew until mark lines.

Lastly, narrowly topstitch the pleats. This way your pleats will stay nice and crisp.

Step 7

Sew shoulder seams and side seams.

Step 9

Collar and Facings

Sew center backs of the Collars (pattern piece 7) together, right sides facing; the undercollar is the fused pair. Align the undercollar to the dress, right sides facing, with the straighter, long edge of the collar meeting the dress neckline. Sew.

With right sides facing, sew the short ends of the Back Facing (pattern piece 10) to the Front Facings (pattern piece 9). Now you will have one long facing piece. Now, as you did with the undercollar already, align the topcollar to the facings and sew.

Now, we sew the undercollar/dress piece to the topcollar/facing piece. From hem to hem, sew, right sides facing. Trim the seam allowance. Turn collar right side out.

Take the seam allowances of the topcollar and undercollar, and sew them together, from end to end. You want to stitch just to the outside of the row of stitching that's already there.

Step 10

Hem:

Turn the front facing hem so it is sandwiched between the dress front and the facing. Hem the dress at 1 1/4".

Step 11

Cuffs and Sleeves

Sew the Cuffs (pattern piece 6) together in pairs, with one side fused and the other not. Right sides are facing, and you are sewing from “” to “”. The long unsewn edge aligns with the sleeve hem, and short unsewn end is the sleeve seam.

Lay Sleeve (pattern piece 5) right side up, position cuffs right side up (unfused side face up), then the Sleeve Facing (pattern piece 11), then stitch along the bottom. Now turn facing to the inside and press. Give an understitch, sewing all the seam allowances to the facing. Now, sew the sleeve into the round, from facing up.

Now, set the sleeves. Give a basting stitch to the sleeve cap, gather slightly, align the notches, and sew.

Step 12

Belt

Fold Belt (pattern piece 8) in half long ways, and sew from the ends towards the center, but leaving an opening to turn the belt right side out. Trim seam allowances and, using a loop turner or dull knitting needle, push the belt right side out through the opening (see related technique).

We used thin crocheted belt loops (see related technique); you could also use spaghetti strips. Attach at side seams.

Step 13

Buttons and Snaps. We used cloth-covered buttons with snaps underneath at the center front. The buttons on the sleeve cuffs and the upper left bodice are faux, with no snaps underneath.

Step 8 — OPTIONAL - Piping detail on dress

If you want to use piping on some of the seams like we did, follow the steps on how to create piping, and how to sew into desired seams where needed.

BurdaStyle

Paola