

Margarete

By: burdastyle

<http://www.burdastyle.com/projects/margarete>



We gave our Margarete Top the black and white theme, to really bring out the contrast in between the piping and the white lace. We ended up finishing it with another black sash around the hem, simply a ribbon stitched to the bottom of the top. The ribbons can be closed in a big bow right over the bottom of the zipper.

Materials

Cotton lace, Stretch Satin, Satin Ribbon

Step 1

**burda Download-Pattern
Top 8059 - Instructions**

●●●● average close fitting

| burda sizes | 45 ins / 114 cm | | | | | 55 ins / 140 cm | | | | | | |
|-------------|-----------------|------|------|-------|-------|-----------------|------|------|------|-------|-------|-------|
| | 34 | 36 | 38 | 40 | 42 | 44 | 34 | 36 | 38 | 40 | 42 | 44 |
| yds | 1/2 | 3/4 | 1 | 1 1/4 | 1 1/2 | 1 3/4 | 1/2 | 3/4 | 1 | 1 1/4 | 1 1/2 | 1 3/4 |
| m | 0,75 | 1,10 | 1,40 | 1,80 | 2,10 | 2,40 | 0,75 | 1,10 | 1,40 | 1,80 | 2,10 | 2,40 |

→ with nap * without nap

Interfacing 24" x 20" (60 cm x 50 cm)

Piping tape 2 1/2-3 1/2 yds (2,20 - 2,75 m)

12" (30 cm)

Linon, denim fabrics, gabardine

right side

wrong side

interfacing

lining

batting

Patternpieces:

Top

- 1 Top bust piece 4x
- 2 Bottom bust piece 4x
- 3 Front piece 1x
- 4 Top back piece 2x
- 5 Back piece 1x
- 6 Shoulder straps 2x

Step 2



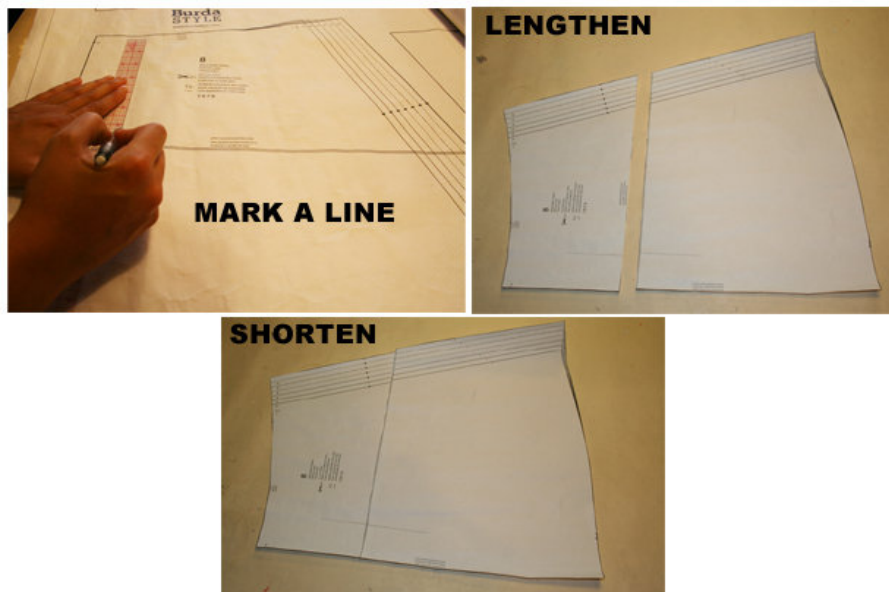
To print the patterns at home, follow the instructions:

Paper cut for ANSI A (German DIN A4) prints:

The patterns are printed out on 10 sheets with a thin frame. Wait, until all sheets are printed out. Arrange the

sheets so that they fit together (see extra page with the overview of the prints). Cut off the single sheets on the upper and right edge along the thin frame lines. Begin with the left lower sheet and then glue the parts in the frame lines together precisely.

Step 3



ADJUST PATTERN SIZES

Select your size according to the Burda-dimension table: Dresses, blouses, jackets and coats according to the bust size, trousers and skirts according to the hip width. Change the patterns according to size (inches or cm) if necessary, to fit your measurements if they deviate from the Burda-dimension table (a). Cut out the pattern according to your size. Refer to our “ Adjust patterns for mixed sizes” technique

LENGTHENING OR SHORTENING THE PATTERN PIECES

Our pattern is calculated for a height of 5’ 6” (168 cm). If you are taller or shorter, you may adjust the pattern to fit your size at the lines marked “lengthen or shorten here”. Thus the fit is preserved. Make sure that you adjust all pieces of one model by the same amount at the same lines. (b)

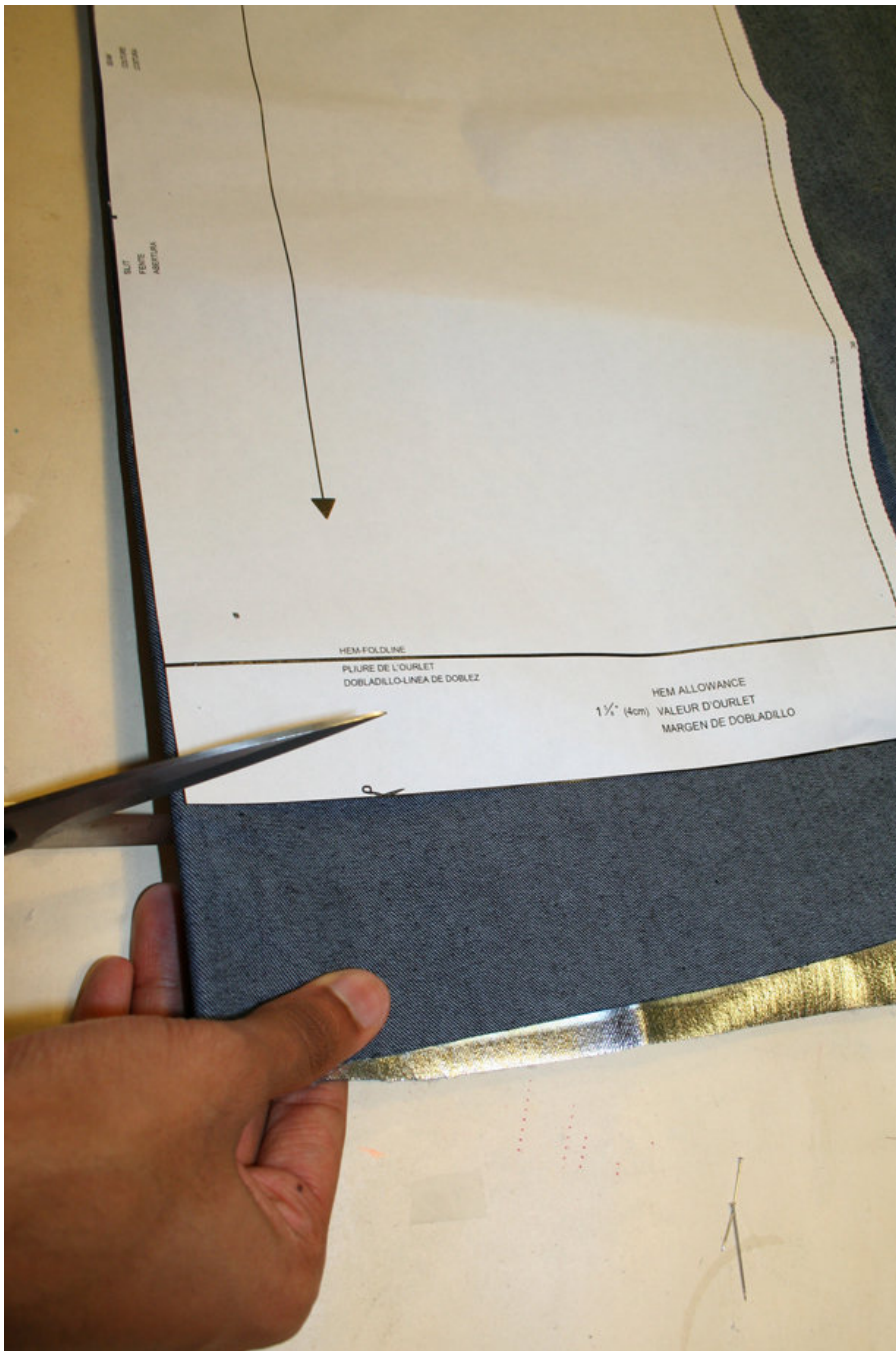
How to lengthen and shorten pattern pieces:

Cut the pattern pieces along the marked lines.

To lengthen, slide the two halves of the pattern piece as far apart as necessary.

To shorten, overlap the two halves of the pattern piece as far as necessary. Even out the side edges. ©

Step 4



CUTTING OUT

FOLD () means: here is the center of a pattern piece but never a cut edge or a seam. The piece should be cut double, with the fold line forming the centre line. Pattern pieces that are outlined with a broken line in the cutting diagrams are to be placed face down on the fabric. (a)

The cutting diagrams on the pattern sheet show how the pattern pieces should be placed on the fabric. For a single layer of fabric, the pattern pieces are pinned to the right side. For double layers of fabric, the right sides are facing and the pattern pieces are pinned to the left side. The pattern pieces that are shown in the cutting diagram, extending over the fold of the fabric, should be cut last from a single layer of fabric. (b)

Step 5

INTERFACING



SEAM AND HEMLINE ALLOWANCES are included on an average: 5/8" (1.5 cm) for all edges and seams. Use BURDA carbon paper to transfer all pattern lines and markings to the left side of the fabric pieces. You find instructions in the packet.

Interfacing

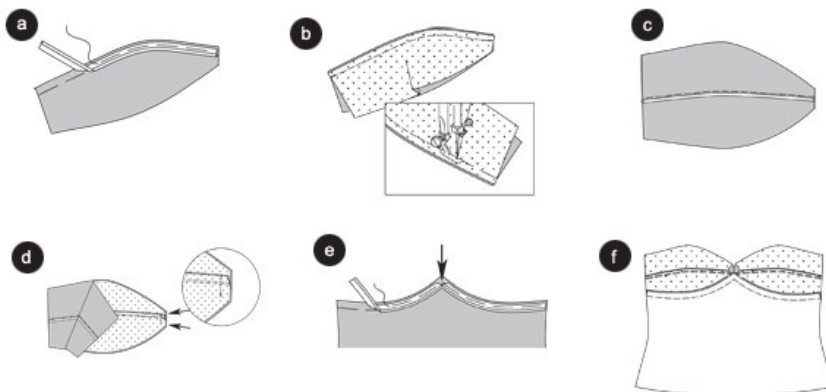
Cut interfacing according to the drawing and press onto the left fabric side

SEWING

When sewing the right fabric sides are facing.

Transfer all lines to the right fabric side on the pattern using a basting stitch.

Step 6



TOP

Bust pieces

Baste the piping tape onto the upper edge of the right and left bottom bust piece (bust piece including interfacing), thereby the tape is placed onto the allowance and the piping is directing towards the bust. (a)

Position the upper bust pieces, that include the interfacing onto the bottom bust pieces that include the interfacing as well. Stitch the dividing seam (seam across bust) together. (seam 14). Stitch close to the piping

using a one-sided edge stitch tootsies. Fold and press allowances upwards (b). Stitch seams narrowly; close to the piping using the one-sided edge stitch tootsies ©.

Front center seam

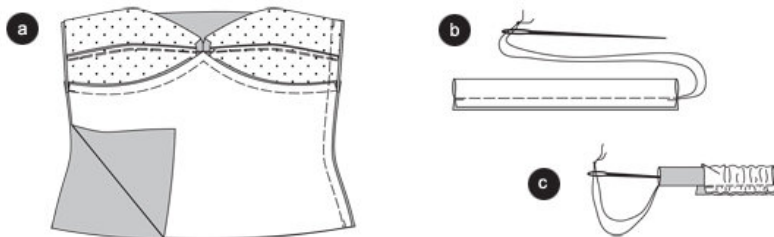
Position the bust pieces on top of each other facing right to the right, stitch front center seam; dividing seam needs to meet. Attention: Do not stitch onto the allowances (arrows). Fold and press allowances apart. (d)

Stitch the bust piece

Baste piping tapes onto the upper edge of the front piece, cut the tape into the front center as well (arrow). (e)

Pin the bust piece onto the front piece facing right to the right (seam 15) and stitch. Fold and press allowances inwards into the bust piece. Stitch closely to the piping (see drawing 2a). Stitch the back dividing seam in the same way (seam 16). (f)

Step 7



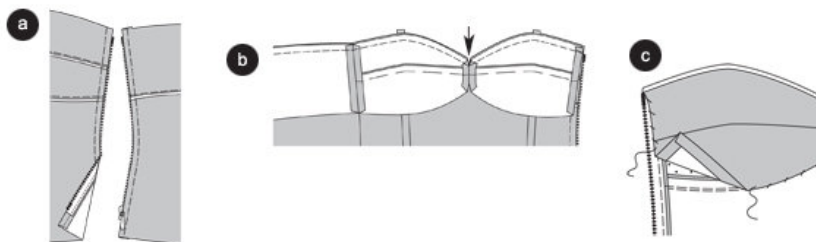
Right side seam

Position front piece onto the back piece facing right to the right, stitch right side seam (seam 17). Neaten allowances and press apart. (a)

Shoulder straps

Fold the shoulder straps lengthwise, the right side fold inside. Stitch edges on top of each other, approximately 3/8" (1 cm) next to the fold line (b). Don't cut the threads to short, instead thread them into a needle. Move the needle, the needle eye ahead, through the reel ©. Baste shoulder straps between the cross lines onto the bust pieces.

Step 8



Zipper

Press the allowances of the side edges inwards. Baste the zipper, covered, under the slit edges and stitch

using the zipper tootsies. Stitch together the bust pieces (without interfacing), and position onto the upper back piece (without interfacing) facing right to the right. Stitch the side seam, in same way creating a mirror inverted version of the outside piece of the top. Fold and press allowances apart. (a)

Upper edge

Baste piping tapes onto the upper edge and fold the ends of the zipper upwards.

Position the bust pieces and the upper back pieces on top of each other facing right to the right, fold side edges inwards. Baste the upper edges on top of each other and stitch. Slash the piping tapes in the front center (arrow). Trim allowances. Turn the piece inwards. Baste edges, press and stitch narrowly. Fold bottom edge inwards and stitch onto the beginning seam (b). Stitch side edges onto the zipper tapes ©.

Seam

Neaten seam, fold inwards, press. Stitch bottom edge approximately 1/2" (1,2 cm) wide.

Shoulder straps

Pin the ends of the shoulder straps under the back piece; adjust the length of the straps when trying the top on. Stitch strap on.

BurdaStyle

Margarete