

10/2010 Wool Shorts

By: burda style magazine

<http://www.burdastyle.com/projects/102010-wool-shorts>



Wool Shorts burda style magazine patterns FAQ

Materials

Brushed wool fabric

Step 1 — Preparation

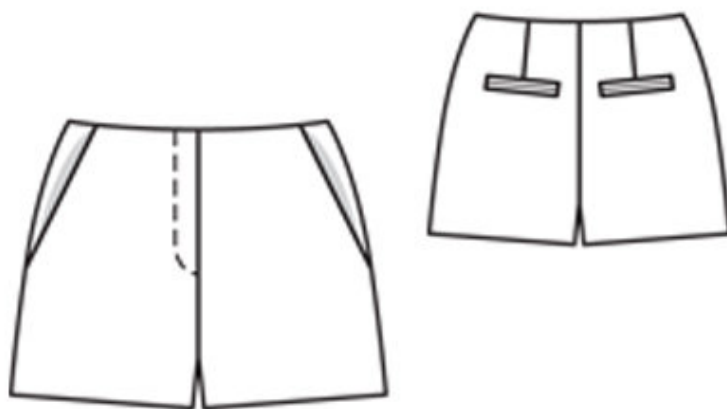
Trace the pattern pieces from the pattern sheet. Trace the pocket piece from piece 21 as a separate pattern piece.

The stitching line at the zip opening is marked for size 34. For sizes 36 — 42, mark the stitching line the same distance from centre front as for size 34. The joining lines for the binding on piece 27 are marked in full for size 34 only. For the other sizes, complete these lines accordingly.

Seam and hem allowances:

Seams and edges 1.5 cm (5/8 in), hem 3 cm (1 1/4 ins).

Step 2 — Cutting Out



Brushed wool fabric:

21 front trouser piece 2x

22 side hip yoke with

— integrated pocket piece 2x

27 back trouser piece 2x

24 front facing 2x

25 back facing 2x

26 left underlap piece 1x

a) 4 binding strips (back pockets), 15 cm (6 ins) long, 3 cm (1 1/4 ins) wide (incl. allowance),

b) 2 pocket pieces (back pockets), 15 cm (6 ins) wide, 13 cm (5 1/4 ins) long (incl. allowance).

Lining:

21 pocket piece 2x

piece 26 and pocket piece (piece b).

Interfacing: See pattern layout. Iron strips of interfacing, about about 4 cm (15/8 ins) wide, to wrong side of back trouser pieces, over pocket markings.

Step 3 — Back darts

Stitch back darts and press to centre.

Step 4 — Sew bound pockets on back trouser pieces

Use basting thread to mark abutting lines for binding on right side of fabric, 6 mm (1/4 in) from each joining line (= finished width of binding). Fold binding strips lengthwise, right side facing out, and press. Lay doubled binding strips on back trouser pieces and pin so that fold edge of binding meets abutting line. Stitch binding in place along joining lines, stitching 6 mm (1/4 in) from each fold edge. Slash between lines of stitching and clip diagonally toward each last stitch, not catching binding strips. Lay binding into pocket openings and press. Lay small triangles at pocket opening ends to inside and stitch to binding, from seam end to seam end. Stitch pocket lining pieces to seam allowances of lower binding joining seams. Stitch pocket pieces of main fabric to seam allowances of upper binding joining seams. Trim pocket pieces even and stitch together.

Step 5 — Hip yoke pockets

Stitch pocket pieces right sides together with pocket opening edges of front trouser pieces. Lay pocket pieces up and stitch to seam allowances, close to seam. Turn pocket pieces to inside. Pin pocket opening edges to side hip yokes, at abutting lines. Stitch pocket pieces together on inside. Baste pocket pieces to wrong side of front trouser pieces, first trimming away allowance of right pocket piece along centre front.

Step 6 — Stitch side seams and inside leg seams

Stitch side seams and inside leg seams. Stitch centre front seam from slit mark to inside leg seam. Stitch side seams of facing.

Step 7 — Zip opening and upper edge of trousers

Press self-facings to inside, along centre front on the right and 5 mm (3/16 in) before centre front on the left. Stitch zip under left edge of opening (underlap) close to teeth of zip. Pin opening closed, matching centre fronts. Stitch loose zip tape to right facing, not catching trouser piece. Stitch both pieces for the underlap right sides together, leaving straight joining edge open. Trim seam allowances. Turn underlap right side out and press. Neaten joining edges together. Work buttonhole for smaller button. Lay underlap under left edge of opening and pin to facing. Stitch facing to underlap, close to zip joining seam. Lay right facing outward and pin to upper edge of trousers. Pin upper facings right sides together with upper edges of trousers. On right edge of opening, trim away allowance of facing along centre front. Stitch along upper edges of trousers. Lay facings up and stitch to seam allowances, close to seam. Turn in end of facing at left edge of opening. Turn upper facings and facing on edge of opening to inside. Sew facing on left edge of opening to underlap joining seam. Topstitch right edge of opening vertically, as marked, from upper edge to 3 cm (1 1/4 ins) before the end. Lay opening closed again and topstitch to the end, catching underlap. In back, lay facings up again and stitch centre back seam up to inside edge of facing. Turn facing to inside again. Sew inside edge of facing to seams and to darts.

