

12/2011 Long sleeve maxi dress

By: burda style magazine

<http://www.burdastyle.com/projects/122011-long-sleeve-maxi-dress>

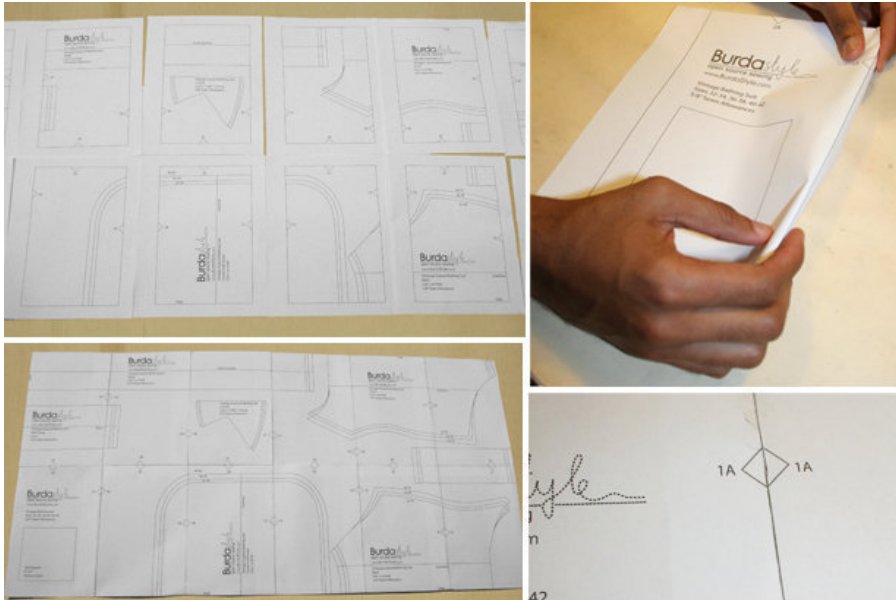


Long sleeve maxi dress burda style magazine patterns FAQ

Materials

Silk crpe

Step 1 — Preparation



Paper cut for ANSI A (German DIN A4) prints:

This pattern is printed on 8.5 × 11 sheets of plain paper. Do not scale or center pages before printing. Wait until all sheets are printed out before beginning to tape them together. **Do not cut out pattern pieces yet**— Arrange the sheets on a large, hard, flat surface so that they fit together, matching up like numbers and letters (i.e. 6A to 6A). To tape pattern together, fold under the margin of one piece (6A) and tape right against the line of it's matching number/letter (6A).

burda style magazine pattern do not have seam allowance included.

Seam and hem allowances to be added: Seams and edges 1.5 cm (5/8 in).

Step 2 — Cutting out



1 front with integrated tie band 2x
 2 front hem facing, on a fold 1x
 2 back 2x
 2 back hem facing, on a fold 1x
 3 sleeve 2x
 4 front neck facing, on a fold 1x
 5 back neck facing 2x

a) 2 tie band pieces, 195 cm (76 3/4 ins) long, 22 — 23 — 24 — 25.5 — 27 cm (8 3/4 — 9 1/8 — 9 1/2 — 10 — 10 3/4 ins) wide.

Interfacing: See pattern layout. Iron Vilene Bias Tape/stay tape to wrong side of armhole edges and front shoulder edges.

Step 3 — Front

Stitch centre seams on front, beginning short upper seam exactly at marked point of neck edge. Press seam allowances open. Lay pleat in direction of arrows and baste to upper edge.

Step 4 — Tie bands

Fold integrated tie bands in half lengthwise, right side facing in. Pin and stitch curved edges together, from marking to marking (seam number 1). Clip seam allowances at marking, at seam number 1, and clip allowances of curves several times. Stitch horizontal edges of front right sides together, matching centre seams. Turn tie bands right side out. Press allowances of horizontal seam up.

Step 5 — Darts

Stitch back darts and press toward centre.

Step 6 — Zip

Sew invisible zip to back opening edges. Stitch centre back seam from lower edge to zip.

Step 7 — Shoulder seams

Stitch shoulder seams (seam number 2). Stitch shoulder seams of facing. Press seam allowances open.

Step 8 — Face neck edge

Pin facing right sides together with neck edge. At zip opening, turn facing back, approx. 5 mm (3/16 in) before edge of opening, and pin to upper edge. Turn seam allowances on opening edges to outside and pin to neck edge, over facing. Stitch along neck edge. Clip seam allowance of facing into point of neck edge. Trim seam allowances of neck edge. Turn facing and allowances on zip opening edges to inside. Sew facing to zip tapes. Sew inside edge of facing to seams.

Step 9 — Side seam

Stitch side seams (seam number 4).

Step 10 — Hem

Press hem allowance to inside and sew in place by hand.

Step 11 — Sleeves

Stitch darts in sleeves. Press darts up. Stitch sleeve seams. Press sleeve hem allowances to inside and sew in place by hand.

Step 12 — Sleeve caps

Set in sleeves, easing sleeve caps.

Step 13 — Tie bands

Stitch the separate tie band pieces to the integrated tie bands. Now make these seams flat-felled seams as follows: Press seam allowances to one side. Trim the seam allowance which lies below to 5 mm (3/16 in) wide. Turn under edge of seam allowance which lies on top and baste it in place. Work from right side to stitch 7 mm (1/4 in) from the seam. Press allowances on edges of tie bands to wrong side, turn raw edges under, and stitch. Tie bands in a large bow at centre front. Tie long ends of bands together in back.

Step 14 — Tie bands

Face the lower edge of the dress. Twist the tie bands together in front, then lay toward back and tie together in a large bow in back.

BurdaStyle

12/2011 Long sleeve maxi dress