

01/2012 Wrap blouse

By: burda style magazine

<http://www.burdastyle.com/projects/012012-wrap-blouse>



Wrap blouse burda style magazine patterns FAQ

Materials

Chiffon

Step 1 — Preparation



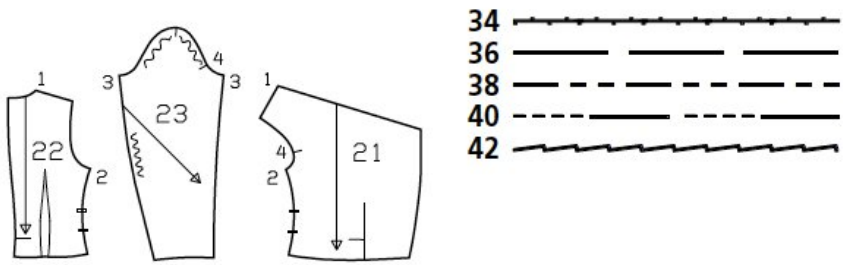
Paper cut for ANSI A (German DIN A4) prints:

This pattern is printed on 8.5 × 11 sheets of plain paper. Do not scale or center pages before printing. Wait until all sheets are printed out before beginning to tape them together. **Do not cut out pattern pieces yet**— Arrange the sheets on a large, hard, flat surface so that they fit together, matching up like numbers and letters (i.e. 6A to 6A). To tape pattern together, fold under the margin of one piece (6A) and tape right against the line of it's matching number/letter (6A).

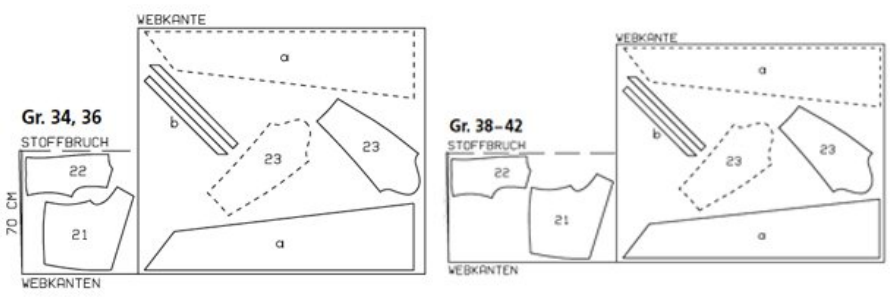
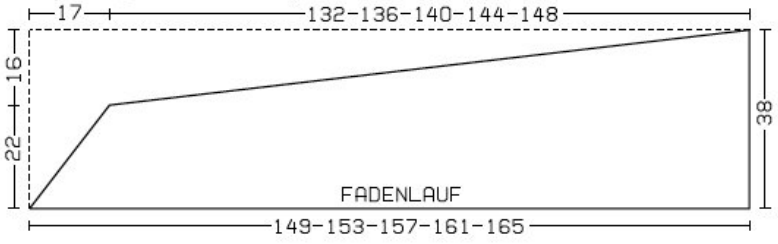
burda style magazine pattern do not have seam allowance included.

Seam and hem allowances to be added: Seams and edges 1.5 cm (5/8 in).

Step 2 — Cutting out



How to draft the tie band (centimeters)



webkanten = selvage fadenlauf = grainline
 stoffbruch = fabric fold

- 21 front 2x
 - 22 back 2x
 - 23 sleeve 2x
 - a) tie band, 2x (see diagram),
 - b) bias strip for neck edge, a total of 105 — 110 — 115 — 120 — 125 cm (41 1/2 — 43 1/2 — 45 1/4 — 47 1/4 — 49 1/4 ins) long, 4 cm (15/8 ins) wide (incl. allowances).
- Interfacing: Iron strips of interfacing, 1.5 cm (5/8 in) wide, to wrong side of seam allowances on neck edges, front shoulder edges, and armhole edges.

Step 3 — Sew the centre back seam as a French seam (double seam)



First lay the fabric pieces wrong sides facing and stitch the 1.5 cm (5/8 in) wide seam allowances together, 7 mm (1/4 in) from fabric edges. Press seam allowances open. Then lay the pieces right sides facing, with the seam lying exactly along the fold. Now stitch along marked seam line, 8 mm (a generous 1/4 in) from fold edge. Press seam allowances to one side.

Step 4 — Back darts

Stitch back darts and press toward centre. Stitch darts in place.

Step 5 — Band

For the tie band opening in right side seam, press seam allowances on right front and right back edges to inside, between the slit marks. To avoid needing to clip these allowances, taper them toward seam allowance edge, above and below the slit marks, as you press. Turn edges of slit allowances under and stitch in place.

Step 6 — Side and shoulder seams

Sew side seams and shoulder seams as French seams. Sew sleeve seams as French seams, easing back sleeve edges from $\hat{a}-\phi$ to $\hat{a}-\phi$.

Step 7 — Tie bands

On tie bands, press allowances on long edges and angled narrow edge to wrong side, turn raw edges under, and stitch. Stitch straight edges of tie bands to vertical edges of fronts (French seams). Allowances of front extend past upper and lower edges of tie bands. Press seam allowances of joining seams onto fronts.

Step 8 — Neck

Fold bias strip for neck edge lengthwise, right side facing out, and press. Pin folded strip to neck edge so that fold edge of strip lies on garment piece, 1 cm (3/8 in) past seam line. Turn ends of strip back. Stitch along seam line. Trim seam allowances. Turn bias strip to inside and press edge. Topstitch 7 mm (1/4 in) from neck edge.

Step 9 — Hem

Press hem and sleeve hem allowances to inside, turn raw edges under, and stitch.

Step 10 — Sleeve caps

Set in sleeves, easing sleeve caps. Trim seam allowances to 7 mm (1/4 in) wide and neaten edges of allowances together.

BurdaStyle

01/2012 Wrap blouse