

Babydoll Dress 03/2012

By: burda style magazine

<http://www.burdastyle.com/projects/babydoll-dress-032012>



Babydoll dress sewing pattern. This version of the classic babydoll dress is made in Broderie Anglaise fabric and silk crepe for the top bodice part. The pattern can be shortened or lengthened easily to alter the style of the dress. burda style magazine patterns FAQ

Materials

Broderie anglaise, width: 135 cm (53 ins) length: 1.85 m (21/8 yds). Crepe, width: 140 cm (55 ins) length for the yoke: 0.30 m (3/8 yd). Vilene Bias Tape/stay tape. 1 invisible zip, 40 cm (16 ins) long, and a special presser foot. 4 small sew-on snap fasteners.

Step 1 — Preparations



Paper cut for ANSI A (German DIN A4) prints:

This pattern is printed on 8.5 × 11 sheets of plain paper. Do not scale or center pages before printing. Wait until all sheets are printed out before beginning to tape them together. **Do not cut out pattern pieces yet**— Arrange the sheets on a large, hard, flat surface so that they fit together, matching up like numbers and letters (i.e. 6A to 6A). To tape pattern together, fold under the margin of one piece (6A) and tape right against the line of it's matching number/letter (6A).

Trace the pattern pieces from the pattern sheet following the lines and markings for the correct size and the correct style (106C). (This pattern also includes pattern pieces, lines and markings for style 106 A and B)

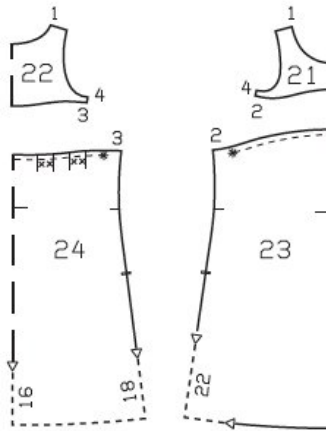
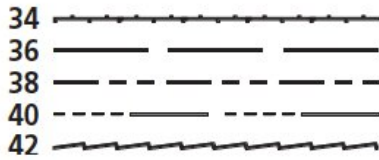
Lengthen or shorten pieces 23 and 24 as indicated.

burda style magazine pattern do not have seam allowance included.

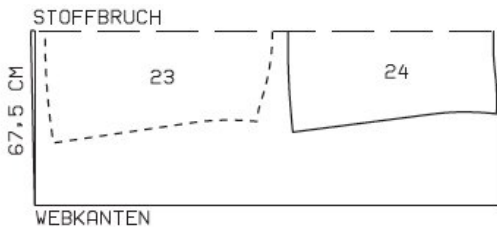
Seam and hem allowances to be added: Seams and edges 1.5 cm (5/8 in), hem 4 cm (1 5/8 ins), lining 1.5 cm (5/8 in).

Step 2 — Cutting out

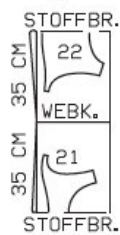
Pattern pieces 21 to 24



Skirt fabric, 140 cm width



Top fabric, 140 cm width



Webkante = Selvage
Stoffbruch = Fabric fold

Crepe:

- 21 front yoke, on a fold 1x
- 22 back yoke, on a fold 1x

Broderie anglaise:

- 23 front, on a fold 1x
- 24 back, on a fold 1x

Lining:

- 21 front yoke, on a fold 1x
- 22 back yoke, on a fold 1x
- 23 front, on a fold 1x
- 24 back, on a fold 1x

Vilene Bias Tape/stay tape: Iron to neck and armhole edges of lining pieces.

Step 3 — Sewing



Gather the upper edges of the front and back between the asterisks to 35 cm (13 3/4 ins). Stitch front yoke to front and stitch back yoke to back. Press seam allowances onto yokes.

Gather and sew lining pieces as for the pieces of outer fabric.

Neck and armhole edges, shoulder seams: Pin the lining pieces right sides together with the front and back. Stitch along the neck and armhole edges, beginning and ending 2 cm (3/4 in) below each shoulder seam line. Trim the seam allowances. On curves, clip allowances close to line of stitching. In front (not back), turn the lining to the inside. Push the front shoulder edges between the as-yet-unturned back shoulder edges right fabric sides of front and back and lining lie together. Stitch the shoulder seams of the dress and lining. Pull the front which lies inside and the lining up and out slightly to press the seam allowances open. This will be easier if you slip the handle of a wooden spoon (or similar) under the seams. Then stitch the remaining open edges closed. Pull the front down out of the back shoulder edges and the lining will turn itself to the inside. At neck and armhole edges, stitch the lining to the seam allowances, as far as possible, close to the seams.

At the armhole edges, turn the lining up again. Stitch the right side seam on the outer fabric and lining as a continuous seam.

Sew the invisible zip to left slit edges, beginning at armhole edge. Stitch the left side seam from the lower edge to the zip. Stitch the left side seam of the lining. Turn lining edges under and sew to the zip tapes.

On the back, fold the fabric on each marked fold line, with wrong side facing in. Press the fold edges lightly. Sew the snaps close to fold edges, as marked, catching both layers of fabric. The fold edges lie together when snaps are fastened.

Press the hem allowance to the inside and sew the hem by hand. Hem the lining so that it is approx. 2 cm (3/4 in) shorter than the dress.

BurdaStyle

Babydoll Dress 03/2012