

Maternity Satin Dress 02/2012

By: burda style magazine

<http://www.burdastyle.com/projects/maternity-satin-dress-022012>



Maternity dress burda style magazine patterns FAQ

Materials

Crepe satin, fabric width: 140 cm (55 ins) Length: Size 38: 2.35 m (2 5/8 yds) Size 40: 2.40 m (2 5/8 yds) Size 42: 2.45 m (2 3/4 yds) Size 44: 2.50 m (2 3/4 yds) Size 46: 2.55 m (2 7/8 yds). Vilene/Pellon G 785. 1 invisible zip, 40 cm (16 ins) long, and a special presser foot.

Step 1 — Preparations



Paper cut for ANSI A (German DIN A4) prints:

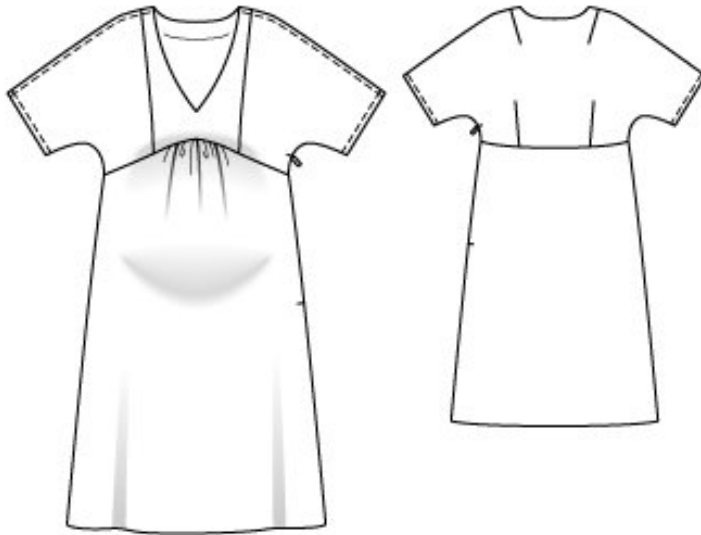
This pattern is printed on 8.5 × 11 sheets of plain paper. Do not scale or center pages before printing. Wait until all sheets are printed out before beginning to tape them together. **Do not cut out pattern pieces yet**— Arrange the sheets on a large, hard, flat surface so that they fit together, matching up like numbers and letters (i.e. 6A to 6A). To tape pattern together, fold under the margin of one piece (6A) and tape right against the line of it's matching number/letter (6A).

Burda sizes 38, 40, 42, 44, 46. The size chart for maternity clothes is the standard women's size chart. Compare your own measurements, except for waist measurement, with the size chart to determine your size.

Trace the pattern pieces from the pattern sheet. **burda style magazine pattern do not have seam allowance included.**

Seam and hem allowances to be added: Seams and edges 1.5 cm (5/8 in), hem 3 cm (1 1/4 ins)

Step 2 — Cutting out



- 1 centre front, on a fold 1x
- 2 side front with sleeve 2x
- 3 back with sleeve, on a fold 1x
- 4 front skirt panel, on a fold 1x
- 5 back skirt panel, on a fold 1x
- 6 front facing, on a fold 1x
- 7 back facing, on a fold 1x

Interfacing: Cut interfacing for and iron on to wrong side of facing pieces. Iron strips of interfacing, 2 cm (3/4 in) wide, to wrong side of zipper slit edges.

Step 3 — Sewing

Pin the back darts and sew according to markings on the pattern. Make sure the seam is on the wrong side of the fabric. Press the darts toward centre back.

Lay the side front pieces (pattern piece 2) right sides together with the center front piece (piece 1). Line up, pin and sew the section seams. Press seam allowances open.

Lay the front piece right sides together with the back piece, line up pine and stitch the shoulder seams and upper sleeve seams as flat-felled seams: Stitch seam. Press allowances onto front. Trim lower allowance to 5 mm (3/16 in) wide. Turn edge of upper allowance under and baste. Work from outer side of dress to stitch 7 mm (1/4 in) from seam.

Lay the front and back facing pieces, right sides together and stitch the shoulder seams of neck facing. Press the seam allowances open.

Line up the facing neck edge with the neck edge on the garment, right sides facing. Pin and sew along the neckline. Trim down the seam allowances and clip at centre front, close to seam. Turn facing up and stitch the facing together with the seam allowances, close to the joining seam. Turn facing to inside. Press edge. Sew inside facing edge to shoulder seams.

Gather the upper edge of front skirt panel between asterisks. Stitch front skirt panel to bodice front and stitch back skirt panel to bodice back. Press seam allowances up.

Sew invisible zipper to left side edges between slit marks. Stitch left sleeve seam and side seam as continuous seam, up to zipper. Stitch left side seam from hem edge to zipper. Stitch right side seam and sleeve seam as continuous seam. Press seam allowances open.

Press the hem allowance to the inside and sew in place by hand. Turn sleeve hem allowances to the inside, turn edges under by half width, and stitch in place.

BurdaStyle

Maternity Satin Dress 02/2012