

06/2010 Waistcoat / Vest

By: burda style magazine

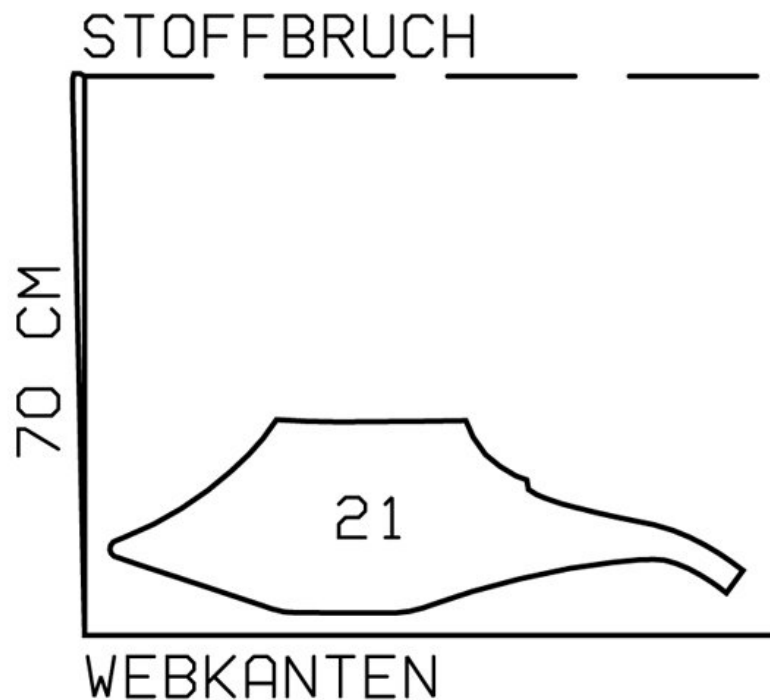
<http://www.burdastyle.com/projects/062010-waistcoat-vest>

Waistcoat / Vest burda style magazine patterns FAQ

Materials

eyelet/broderie anglais

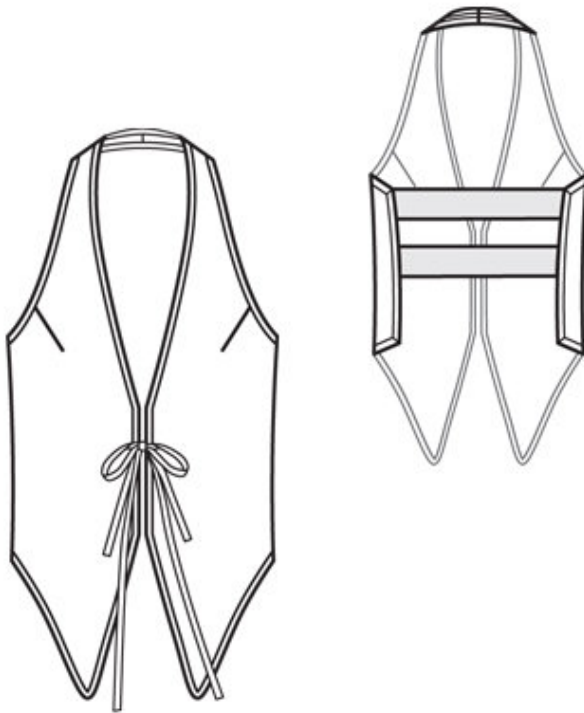
Step 1 — Preparation



104 36-44

Trace the pattern pieces from the pattern sheet.
Seam and hem allowances: Seams and edges 1.5 cm (5/8 in).

Step 2 — Cutting out



21 front with integrated strap 2x

Step 3 — Side seams

Stitch side seams and centre back seam as French seams (double seams): First lay fabric pieces wrong sides facing and stitch seam 7 mm (1/4 in) from fabric edge. Press seam allowances open. Then lay pieces right sides facing, with the first seam lying exactly on the fold, and stitch seam 8 mm (a good 1/4 in) from fabric edge. Press seam allowances to one side.

Step 4 — Ribbon

Cut petersham ribbon into 4 equal pieces. Work from right side to baste two pieces to each front edge, between markings.

Step 5 — Bias

Fold bias tape in half lengthwise and press. Work from right side to pin doubled bias tape to outer edges of waistcoat so that fold edge of tape lies on garment piece, 7 mm (1/4 in) past seam line. Begin and end at one side edge and turn beginning end of bias tape under. Make folds in bias tape at corners. Finally, overlap end over beginning of bias tape. Stitch bias tape in place. Trim seam allowances. Turn bias tape to inside and baste. Press edges. Stitch lace trim to edges of waistcoat.

Step 6 — Mesh band

Cut mesh band to 33 — 35 — 37 — 39 — 41 cm (13 — 13³/₄ — 14¹/₂ — 15¹/₂ — 16¹/₄ ins) and 31 — 33 — 35 — 37 — 39 cm (12¹/₄ — 13 — 13³/₄ — 14¹/₂ — 15¹/₂ ins) long. Stitch mesh band pieces to side edge of fronts as marked — the longer band on top and shorter band on bottom.

BurdaStyle

06/2010 Waistcoat / Vest