

02/2011 Jersey Jacket

By: burda style magazine

<http://www.burdastyle.com/projects/022011-jersey-jacket>



Jersey Jacket burda style magazine patterns FAQ

Materials

jersey pique

Step 1 — Preparation

Größen, Tailles, Sizes						2		3		4		
1	N		L		K		Oberweite Tour de poitrine Bust		Tailleweite Tour des taille Waist		Hüftweite Tour des hanches Hip	
	5'6" 168 cm		5'9" 176 cm		5'3" 160 cm		ins	cm	ins	cm	ins	cm
	US	Eur.	US	Eur.	US	Eur.						
	6	32	6	64	6	16	30	76	23	58	32 ½	82
	8	34	8	68	8	17	31 ½	80	24 ½	62	34	86
	10	36	10	72	10	18	33	84	26	66	35 ½	90
	12	38	12	76	12	19	34 ¾	88	27 ¾	70	37	94
	14	40	14	80	14	20	36 ¾	92	29 ¾	74	38 ¾	98
	16	42	16	84	16	21	37 ¾	96	30 ¾	78	40 ¾	102
	18	44	18	88	18	22	39 ½	100	32 ½	82	41 ¾	106
	20	46	20	92	20	23	41	104	34	86	43 ½	110
	22	48	22	96	22	24	43 ½	110	36 ¾	92	45 ¾	116
	24	50	24	100	24	25	45 ¾	116	38 ¾	98	48	122
	26	52	26	104	26	26	48	122	41	104	50 ¾	128
	28	54	28	108	28	27	50 ½	128	43 ¾	110	52 ¾	134
	30	56	30	112	30	28	52 ¾	134	45 ¾	116	55 ¾	140
	32	58	32	116	32	29	55 ¾	140	48	122	57 ¾	146
	34	60	34	120	34	30	57 ¾	146	50 ¾	128	60	152

Trace the pattern pieces from the pattern sheet.

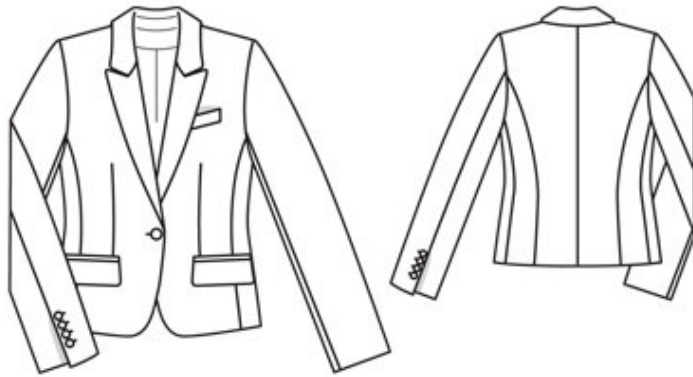
The welt joining lines on piece 1 are marked on the pattern for size 36. For sizes 38 — 44, re-mark the lines. The pocket always begins 1.5 cm (5/8 in) before dart. The buttonholes on piece 5 are marked for size 36. For the other sizes, mark the buttonholes the same distance from corresponding size lines as marked for size 36.

To cut the lining, trace the centre front piece to lining line. Mark a horizontal line from section seam to point of dart and cut open. Lay vertical darts closed and glue horizontal edges together at bottom end of dart. This creates a bust dart on the lining.

Seam and hem allowances:

Seams and edges 1.5 cm (5/8 in), hem and sleeve hems 4 cm (15/8 ins), no allowance on horizontal edges of centre front (marked with scissors symbol), but 1.5 cm (5/8 in) allowance at dart. Cut lining pieces with 1.5 cm (5/8 in) seam and hem allowances.

Step 2 — Cutting out



Jersey pique:

1— 1centre front 2x

2— 2side front 2x

3— 3centre back 2x

4— 4side back 2x

5— 5upper sleeve 2x

6— 6under sleeve 2x

7— 7front facing 2x

8— 8back facing, on a fold 1x

9— 9collar, on a fold 2x

10— 10collar stand, on a fold 2x

11— 11upper left welt 1x

12— 12pocket piece

13— 13flap (lower pocket) 4x

14— 14upper left pocket 1x

15— 15flap (lower pocket) 4x

a) 4 welt strips (lower pockets), 17 cm (6³/₄ ins) long, 3 cm (1¹/₄ ins) wide (incl. allowance),

b) 2 pocket pieces (lower pockets), (6³/₄ ins) wide, 16 cm (6³/₈ ins) long (incl. allowance).

Fine jersey (lining): piece 1 as instructed under 1— Preparation 1— ; piece 3 minus neck facing and with an ease pleat, about 2 cm (3/4 in) wide at centre back; piece 5 without vent facing; piece 12 to lining line; pieces 2, 4, and 6; and also pocket piece (piece b).

Interfacing: See pattern layout. Also interface hem allowances.

Step 3 — Stitch bust darts

Cut close to end of seam at lower horizontal edges of fronts. Press darts open, pressing points of darts flat. Lay horizontal edges of fronts together and baste together with herringbone stitch. Stitch side fronts to centre fronts. Press seam allowances open.

Step 4 — Darts

Stitch lapel darts on fronts. Cut darts open along centre. Press darts open, pressing points of darts flat.

Step 5 — Flap

Lay each interfaced flap piece on flap piece with no interfacing, right sides together, leaving joining edge open.

Step 6 — Welt pockets

Sew welt pockets with flaps on lower part of fronts: Mark abutting lines for welts 5 mm (3/16 in) from welt joining lines (= finished width of welts). Hand baste along these lines to make them visible on right side of fabric. Fold welt strips lengthwise and press, wrong side facing in. Lay folded welt strips on fronts and pin so that fold edges of welts meet abutting lines. Stitch welts in place along joining lines, stitching 5 mm (3/16 in) from fold edges. Slash between lines of stitching and clip diagonally toward ends of seams, not catching welts. Press welts into pocket openings. Fold small triangles at pocket opening ends to inside and stitch to welts, from seam end to seam end. Slip joining edge of each flap to inside, through pocket opening, and stitch to seam allowances, close to upper welt joining seam. Stitch pocket lining pieces to seam allowances of lower welts and stitch pocket pieces of outer fabric to seam allowances of flaps and upper welts. Trim pocket pieces even and stitch together.

Step 7 — Sew welt pocket on upper left front

Fold welt lengthwise, right side facing in, and stitch across ends. Turn welt right side out. Stitch welt right sides together with front, along marked joining line, so that welt points down. Lay fabric pocket piece on front, opposite welt, and stitch 1 cm (3/8 in) from joining seam. At front end, this seam should be about 5 mm (3/16 in) shorter than welt joining seam. Slash between lines of stitching and clip diagonally toward ends of seams. Do not cut into pocket pieces. Pull pocket pieces to inside and press welt over pocket opening. Stitch pocket lining piece to seam allowances of welt joining seam, on inside. Fold small triangles at pocket opening ends to inside and stitch to pocket piece. Trim pocket pieces even and stitch together. Edgestitch narrow ends of welt in place.

Sew narrow edges of welts in place by hand.

Step 8 — Shoulder seams

Stitch centre back seam and back section seams. Stitch side seams and shoulder seams. Stitch shoulder seams of facing. Press seam allowances open.

Step 9 — Sew collar

Pin collar band pieces right sides together with collar pieces — noting seam number 6. Stitch (6). Trim seam allowances and press open. Topstitch close to each side of seams. Lay collar pieces right sides together. Pin collar band joining seams and collar joining edges together exactly. Roll the under collar to add the required extra fullness to the top collar. Pin outer collar edges together to about 5 cm (2 ins) before corners — seam lines do not match (7). Roll corners of collar and pin remaining edges of collar together (8). Working from under collar side, stitch outer edges of collar together, beginning and ending exactly at marked collar joining seam. Trim allowances, trimming corners diagonally (9). Turn collar right side out. Press.

Step 10 — Sew front edges, lapels, collar in place

Pin shoulder edges of front facings right sides together with shoulder edges of back facing. Stitch shoulder seams (10). Press seam allowances open. Neaten inside edge of facing. Lay facings right sides together with jacket. Pin along lapel fold lines and pin to collar joining marks (seam number 7). Pin front edges together, from lapel fold lines to lower edges. Roll fronts on fold line, to add the required fullness to lapels. Pin facing in place, to about 5 cm (2 ins) before corners of lapels. Then roll corners of lapels and pin. Stitch fronts to facings, from collar joining marks. Secure start and end of seams (11). Leave facings lying right sides together with jacket for now. Lay collar between jacket and facing. Pin undercollar to neck edge of jacket, from each marking to corner, and pin top collar to facing. Stitch (12). Clip seam allowance of fronts and facing into corners. Pin long edge of undercollar to neck edge of jacket and pin top collar to facing. Stitch (13). Trim seam allowances — also at front edges — trimming corners of lapels diagonally. Press collar joining seams open. Turn facing to inside. Press edges. Pin collar joining seams together exactly. Lay back facing up and stitch seam allowances together, close to collar joining seam. Lay facing down again. together, close to collar joining seam. Lay facing down again.

Step 11 — Sleeve seams

Stitch front sleeve seams (seam number 9). Lay vent facing and hem allowance of upper sleeves to outside and mitre the corners. Trim allowances of mitring seam to 5 mm (3/16 in) wide and press open. Stitch hem allowance of each under sleeve piece right sides together with vertical edge of underlap. Turn hem allowances and vent facings to inside. Stitch back sleeve seams up to slit mark. Clip seam allowance of under sleeves into corners. Press seams open. Press hem and edges of vent. Sew hem allowances in place by hand. Work buttonholes for smaller buttons. On inside, at beginning of vent, stitch horizontally across facing and underlap.

Step 12 — Sleeve caps

Set in sleeves, easing sleeve caps. Sew shoulder pads in place.

Step 13 — Linings

On centre back lining pieces, stitch allowances of centre seam together, 1 cm (3/8 in) from edge. For the ease pleat, stitch along centre back at top and bottom, each about 5 cm (2 ins) long, and baste in between. Press pleat to one side. Stitch darts and seams of lining. Set in sleeve linings.

Step 14 — Lining and facing

Stitch lining to inside edge of facing, leaving about 8 cm (3¼ ins) open at bottom. Lay lining inside jacket, wrong sides together, pulling linings into sleeves. Pin a fold, about 1 cm (3/8 in) deep, in lining, above hem of jacket. Turn in lining and sew to hem allowances by hand. Remove pins, lay extra length of lining down, and press. Sew remaining front edges of lining to facings.

Step 15 — Sleeve linings

First pin lining to underlap of sleeve vents. Trim lining which lies on top to 1 cm (3/8 in) before edge of underlap, trim away 1 cm (3/8 in) below end of vent, and clip diagonally into corner, about 1 cm (3/8 in) long. Turn in lining and pin to inside edge of vent facing and to top of vent. Turn in lower edge of lining and pin to hem allowance. Sew lining in place.

Step 16 — Buttonhole

Work buttonhole in right front.

BurdaStyle

02/2011 Jersey Jacket