

3/2011 Utility Pants

By: burda style magazine

<http://www.burdastyle.com/projects/32011-utility-pants>



Utility Pants burda style magazine patterns FAQ

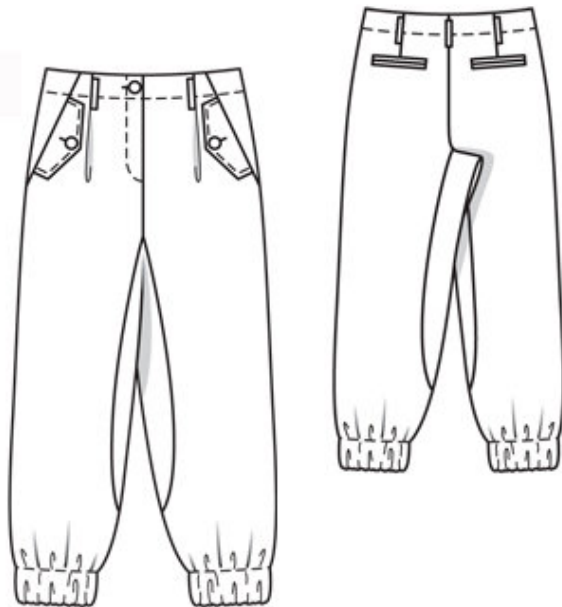
Materials

Gabardine

Step 1 — Preparation

Trace the pattern pieces from the pattern sheet. The stitching line at the zip slit is marked for size 38. For sizes 40 — 46, mark the stitching line the same distance from centre front as for size 38. The buttonhole on piece 1 is marked for size 38. For the other sizes, mark the buttonhole accordingly. The pocket lines on piece 6 are marked in full on the pattern for size 38 only. For sizes 40 — 46, complete the pocket lines accordingly. Seam and hem allowances: Seams and edges 1.5 cm (5/8 in). Hem allowances are already included on the pattern pieces.

Step 2 — Cutting Out



- 1 front trouser piece 2x
- 2 pocket piece (front pocket) 2x
- 3 side front yoke 2x
- 4 flap 4x
- 5 front leg patch, on a fold 1x
- 6 back trouser piece 2x
- 7 back leg patch, on a fold 1x
- 8 front facing 2x
- 9 back facing 2x
- a) 4 bias binding strips (back pockets), 15 cm (6 ins) long, 4 cm (15/8 ins) wide (incl. allowances),
- b) 4 pocket pieces (back pockets), 15 cm (6 ins) wide, 13 cm (5 1/4 ins) long (incl. allowances),
- c) left underlap piece, 19 cm (7 1/2 ins) long, 7 cm (2 3/4 ins) wide, finished width 3.5 cm (1 3/8 ins),

d) 5 belt carriers, a total of 40 cm (16 ins) long, 4 cm (15/8 ins) wide (incl. allowances).

Interfacing: See pattern layout. Iron strips of interfacing, about 4 cm (15/8 ins) wide; to wrong side of back trouser pieces, over pocket markings.

Step 3 — Darts

Stitch back darts and press toward centre back. Work from inside to stitch pleats in front trouser pieces, from upper edge to arrow. Lay pleats in direction of arrows and press. Baste to upper edge.

Step 4 — Flaps

Stitch each interfaced flap piece to flap piece with no interfacing, right sides together, leaving joining edge open. Turn right side out. Top-stitch flaps 5 mm (3/16 in) from seamed edges. Work one buttonhole in each flap.

Step 5 — Front pockets with flaps

Pin pocket pieces right sides together with front trouser pieces so that rectangular pocket opening edges match exactly. Stitch along pocket opening edges. Trim seam allowances and clip diagonally into corners. Turn pocket pieces to inside. Press pocket opening edges. Topstitch close to pocket opening edges. Fold pocket pieces on fold line, right side facing in. Pin faced pocket opening edges to pocket pieces, at abutting lines. Stitch lower edges of pocket pieces together. Baste side and upper edges of pocket pieces to wrong side of front trouser pieces. Lay flaps on front trouser pieces, over pocket openings, and pin in place — flap ends meet seam marks. Stitch side front yokes to front trouser pieces and to pocket pieces, catching flaps. Topstitch yokes close to seams.

Step 6 — Sew bound pockets on trouser backs

Hand-baste abutting lines for binding, 7 mm (1/4 in) from binding joining lines (= finished width of binding) to make these lines visible on right fabric side. Fold binding strips lengthwise, right side facing out, and press. Lay folded binding strips on back trouser piece and pin so that fold edges of binding meet abutting lines. Stitch each binding strip in place, along joining line, stitching 7 mm (1/4 in) from fold edge. Slash between lines of stitching and clip diagonally toward each last stitch, not cutting into binding. Lay binding toward pocket opening and press. Fold small fabric triangles at pocket opening edges to inside and stitch to binding, from seam end to seam end. Stitch pocket lining piece to seam -allowances of lower binding joining seam and stitch pocket piece of outer fabric to seam allowances of upper binding joining seam. Press pocket pieces down, trim even, and stitch together. Use a pocket piece of outer fabric instead of a lining piece. Before stitching pocket pieces together, topstitch trouser pieces close to piping attachment seams.

Step 7 — Stitch centre front seam from slit mark to seam mark

Stitch centre front seam from slit mark to seam mark. Stitch centre back seam from upper edge to seam mark. Press seam allowances onto right trouser pieces.

Step 8 — Stitch inside leg seams

Stitch inside leg seams as continuous seams. Leave hem allowance open below fold line, to insert elastic. Stitch side seams. Press seam allowances onto back. Stitch centre back seam and side seams of facing. Press seam allowances open.

Step 9 — Zip slit and upper edge of trousers

Press self-facings on slit edges to inside. Stitch along centre front on the right and stitch 5 mm (3/16 in) before centre front on the left. Baste zip under left slit edge (underlap), close to teeth, turning in top end of zip tape. Fold underlap piece lengthwise. Stitch across top and bottom. Turn right side out. Neaten joining edges together. Lay underlap under left slit edge and pin — allowance on upper edge of trousers extends past underlap. Topstitch close to left slit edge. Pin slit closed, matching centre fronts. Stitch loose zip tape to right facing, turning in top end of tape and not catching trouser piece. Remove pins at slit. Turn facing on right slit edge to outside and pin to upper edge of trousers. Pin upper facing right sides together with upper edge of trousers. Trim away allowance of facing at right slit edge, along centre front. Stitch along upper edge of trousers. Lay facing up and stitch to seam allowances, close to seam. Turn in allowance on left end of facing. Turn upper facing and facing on right slit edge to inside. Sew narrow left edge of facing in place. Topstitch right slit edge vertically, as marked, to 3 cm (1 1/4 ins) before end of opening, not catching underlap. Stitch again, 7 mm (1/4 in) from first line of stitching. Lay slit closed again and topstitch to the end, catching underlap. Top-stitch close to centre seam and 7 mm (1/4 in) from seam. Topstitch 4 cm (1 5/8 ins) from upper edge of trousers. Work buttonhole as marked.

Step 10 — Hem

Turn hem allowances to inside on fold line. Turn raw edges under and stitch as marked, to form elastic casing. Pull elastic into casing. Sew ends of elastic together for a finished circumference of 31 — 32 — 33 — 34 — 35 cm (12 1/4 — 12 3/4 — 13 — 13 1/2 — 13 3/4 ins). Sew seam openings closed

BurdaStyle

3/2011 Utility Pants