

# Pleat Front Dress 04/2012

By: burda style magazine

<http://www.burdastyle.com/projects/pleat-front-dress-042012>

---



This is a dress that features a front and back deep pleat and thin spaghetti straps. This dress would be ideal for the beach and warm summer days, and could even be worn to the spa! Made in terry cloth, this style would make a great towel dress.

---

## Step 1 — Preparations



This pattern is printed on 8.5 × 11 sheets of plain paper. Do not scale or center pages before printing. Wait until all sheets are printed out before beginning to tape them together. **Do not cut out pattern pieces yet**— Arrange the sheets on a large, hard, flat surface so that they fit together, matching up like numbers and letters (i.e. 6A to 6A). To tape pattern together, fold under the margin of one piece (6A) and tape right against the line of it's matching number/letter (6A).

Trace the pattern pieces from the pattern sheet following lines and markings for the correct size.

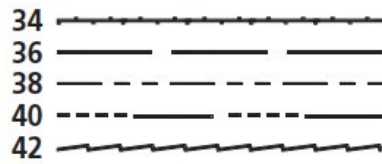
**burda style magazine pattern do not have seam allowance included.**

Seam and hem allowances to be added:

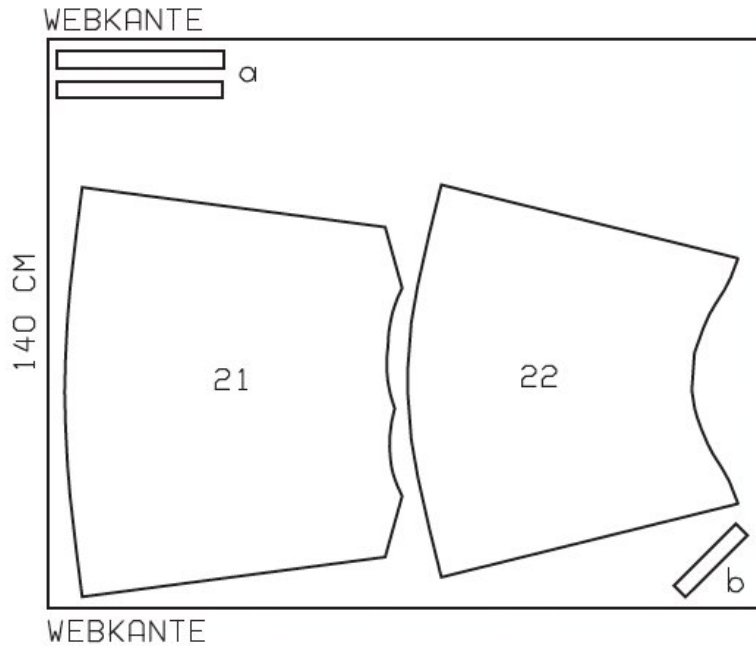
Seams and edges 1.5 cm (5/8 in), upper front and back edge 2 cm (3/4 in).

---

## Step 2 — Cutting Out



Cut pattern pieces 21 & 22 on a single layer of fabric. Use fabric with a width of 140cm



Webkante = selvage

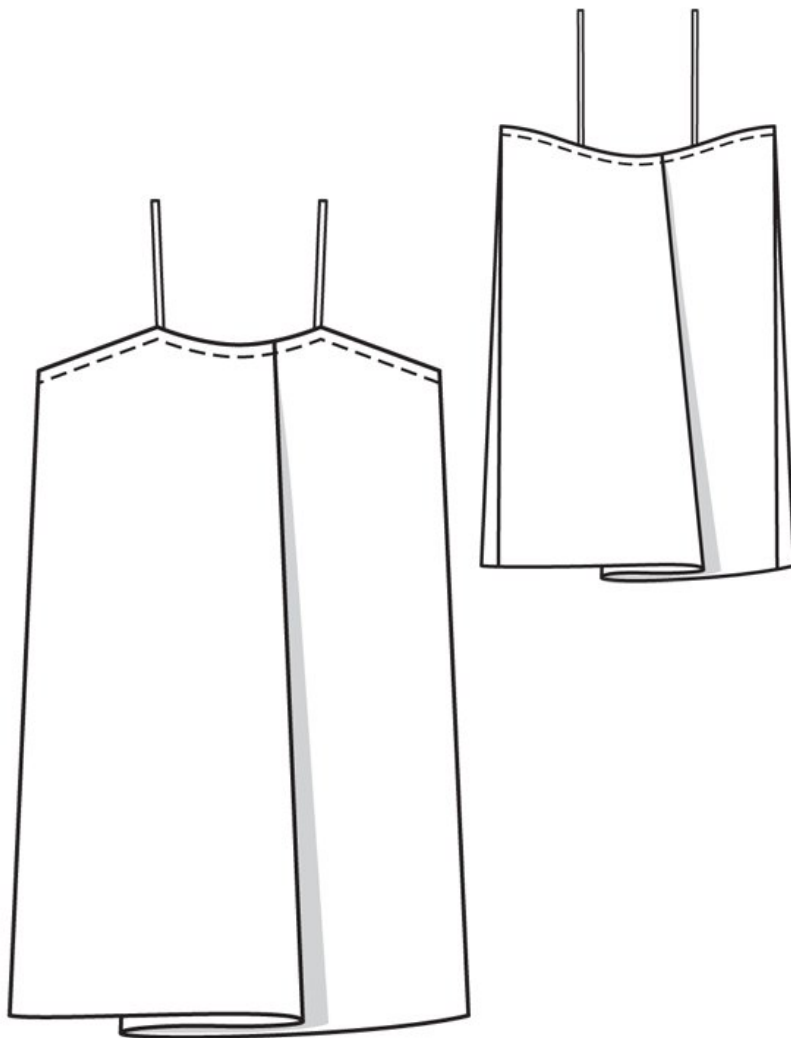
21 front 1x  
22 back 1x

Draft the following pattern pieces not included in the pattern:

a) 2 straps,  
length: 40 41 42 43 44 cm (15 3/4 16 1/4 16 1/2 17 17 1/4 ins)  
width: 4 cm (1 5/8 ins) including allowances

b) bias strips,  
22 cm (8 3/4 ins) long by 4 cm (1 5/8 ins) wide including allowances

### Step 3 — Sewing



Stitch side seams right sides together and neaten the seam allowances together and press onto back.

On the upper edge of the front, press allowances to inside, from each point (where the strap is joined) to the side seam. On upper edge of the back, turn allowance to inside, turn under to 1.2 cm (1/2 in) wide, and baste.

Lay pleats in upper front and back edges following direction of arrows as indicated on the pattern and baste down in place.

Topstitch close to turned-in upper front and back edges then stitch again, 1 cm (3/8 in) from edge, catching back pleat.

Fold bias strips in half lengthwise, right side facing out, and press. Stitch folded bias strips to upper front edge, from corner to corner, so that fold edge of each strip lies on dress, 1.2 cm (1/2 in) past seam line. Trim seam allowances. Turn bias strips up and turn ends in. Turn bias strips to inside and press edge.

Fold each strap in half lengthwise and press, wrong side facing in. Unfold strap again. Now turn each long edge in to the pressed fold and press again. Fold strap in half again. Edgestitch folded edges together. Topstitch close to opposite fold edge.

Slip straps under bias strips along upper front edge, between markings, and pin. Topstitch 1 cm (3/8 in) from front edge, between corners. Turn straps up and topstitch close to front edge, also catching turned-in ends of bias strips.

Pin back strap ends under upper back edge, between markings. Try on garment to determine correct strap length. Sew strap ends in place.

Press hem allowance to inside, turn raw edge under, and stitch down in place.

---

**BurdaStyle**

Pleat Front Dress 04/2012