

Flowy Vest 04/2012

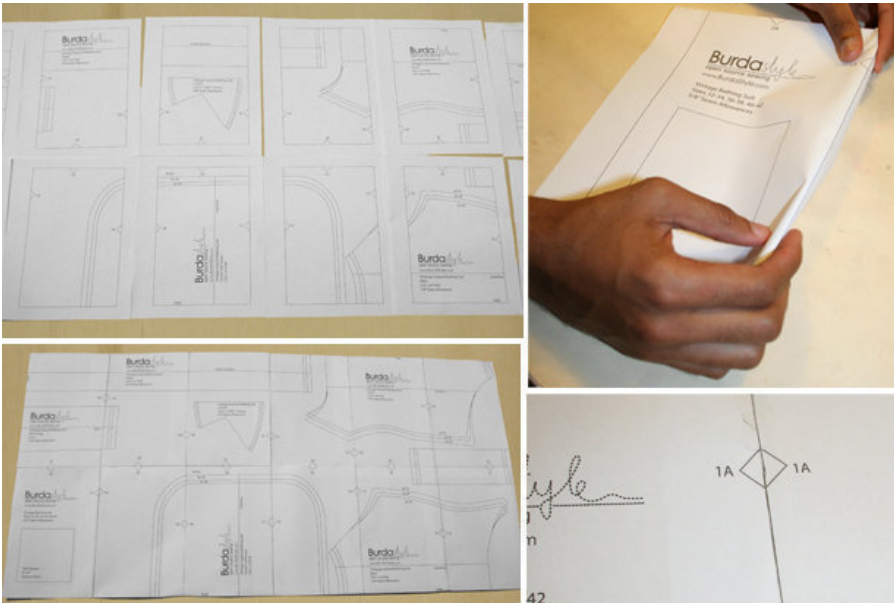
By: burda style magazine

<http://www.burdastyle.com/projects/flowy-vest-042012>



This flowy vest is the perfect alternative to a blazer in the summertime. It has a small shawl collar and pleats in the shoulder to give the fabric extra movement. You could even add sleeves to make it into a jacket.

Step 1 — Preparations



This pattern is printed on 8.5 × 11 sheets of plain paper. Do not scale or center pages before printing. Wait until all sheets are printed out before beginning to tape them together. **Do not cut out pattern pieces yet**— Arrange the sheets on a large, hard, flat surface so that they fit together, matching up like numbers and letters (i.e. 6A to 6A). To tape pattern together, fold under the margin of one piece (6A) and tape right against the line of it's matching number/letter (6A).

Trace the pattern pieces from the pattern sheet. Glue pieces 21 and 21a together on the joining lines. Trace hem facings from pieces 21 and 22 as separate pattern pieces.

The pleat arrow on piece 21 is marked for size 34/36. For the other sizes, mark the pleat arrow accordingly.

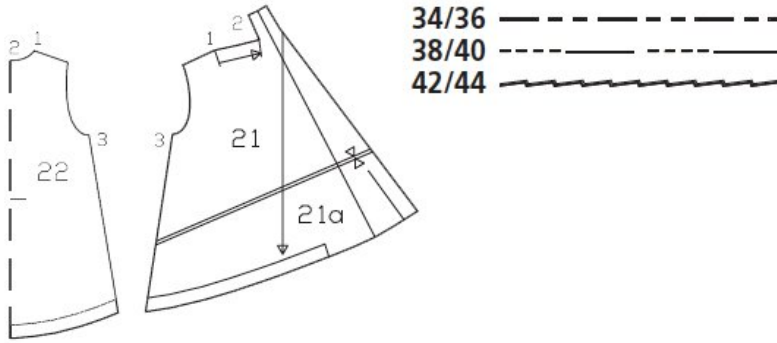
burda style magazine pattern do not have seam allowance included.

Seam and hem allowances to be added:

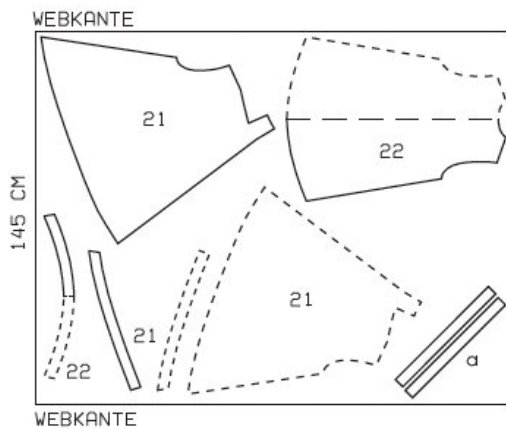
Seams and edges 1.5 cm (5/8 in).

Step 2 — Cutting Out

Pattern Pieces 21, 21a, & 22



Cut pattern pieces on a single layer of fabric. Use fabric with a width of 145 cm.



Webkante = selvage

Cutting out:

- 21 front with collar 2x
- front hem facing 2x
- 22 back, on a fold 1x
- back hem facing,
- on a fold 1x

Draft the following pattern pieces not included in the pattern:

- a) 2 bias strips for armholes,
- length: 51 54 57 cm (20 1/4 21 1/4 2 21/2 ins)
- width: 4 cm (15/8 ins) (incl. allowances).

Step 3 — Sewing



On each front piece, work from the inside to stitch pleat from upper edge to arrow mark. Lay pleat in direction of arrow as marked on pattern. Press pleat seam and baste pleat to upper edge.

Stitch shoulder seams (seam number 1), right sides together, beginning and ending stitching exactly at marked neck edge. Clip seam allowances of fronts into each corner between shoulder and collar. Press seam allowances onto back.

Stitch centre back seam of integrated collar pieces, right sides together and press seam allowances open. Stitch collar right sides together with back neck edge. Press seam allowances onto collar.

Armholes and side seams: Fold bias strips in half lengthwise and press, right side facing out. Stitch folded bias strips to armhole edges so that fold edge of strips lies on garment piece, 1 cm (3/8 in) wide past seam line. Trim seam allowances. Turn bias strips to inside. Press edges. Stitch side seams, turning bias strips up and stitching ends together. Press seam allowances open. Turn bias strips to inside again. Topstitch 8 mm

(1/4 in) from armhole edges.

Press allowances on inside edges of front facings to inside. Turn the front self-facings to outside and pin to hem edge. Stitch seams of hem facing. Press allowance on upper facing edge to inside. Pin hem facing right sides together with lower edge of garment front facing ends lie on inside edges of front facings. Stitch along hem edge.

Turn facings to inside. Press hem edge, front edges and collar edge. Stitch inside facing edges in place, then go on to stitch inside collar edge in place. Topstitch 3.5 cm (1 1/2 ins) from hem edge. At hem edge, turn front edges to outside on short marked fold line and tack to hem stitching line, with a thread bar.

BurdaStyle

Flowy Vest 04/2012