

10/2010 Embellished Jacket

By: burda style magazine

<http://www.burdastyle.com/projects/102010-embellished-jacket>



Embellished Jacket burda style magazine patterns FAQ

Materials

Wool herringbone with velour reverse side and petersham ribbon

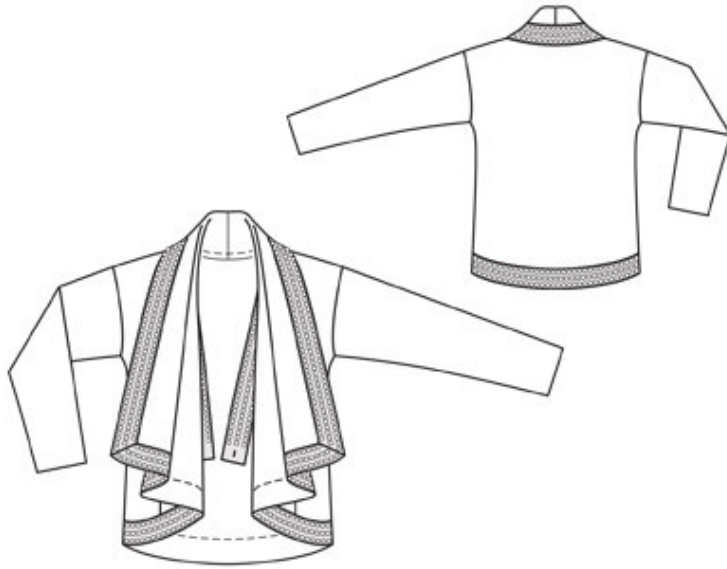
Step 1 — Preparation

Trace the pattern pieces from the pattern sheet. Lengthen piece 23 as indicated.

Seam and hem allowances:

Seams and edges 1.5 cm (5/8 in).

Step 2 — Cutting Out



21centre front with collar 2x

22side front 2x

23back, on a fold 1x

24sleeve 2x

Step 3 — Shoulder seams and collar pieces

Stitch shoulder seams, beginning and ending exactly on marked neck edge. Pin centre seam edges of integrated collar pieces wrong sides together. Stitch centre seam. Stitch centre fronts to side fronts as far as marking then stitch joining edge of collar to back neck edge. Clip seam allowance of centre pieces at markings. Press allowances of section seams open. Press allowances of collar joining seam onto back and stitch in place.

Step 4 — Sleeves

Stitch sleeves to armhole edges, above markings. Stitch side and sleeve seams each as continuous seams. Press seam allowances open.

Step 5 — Petersham ribbon and imitation leather straps

On lower edge of jacket, mark ends of petersham ribbon, about 20 cm (8 ins) from front corners, on right side of fabric. Measure hem edge between markings and cut a piece of petersham ribbon to this length. On wrong side of fabric, mark ends of ribbon on lower front edge, about 30 cm (12 ins) from front corners. Pin petersham ribbon to front and collar edges, from this marking forward (wrong fabric side), leaving seam allowance extending, pinning an angled seam in petersham ribbon at each front corner, and ending at second marking. Remove petersham ribbon from jacket again. Stitch angled seams. Trim seam edges to 1 cm (3/8 in) wide, lay to one side, and press. Pin imitation leather band with square $\hat{=}$ gems $\hat{=}$ along middle of petersham ribbon, removing 2 $\hat{=}$ gems $\hat{=}$ near each angled seam and making diagonal folds in the band. Also remove 1 $\hat{=}$ gem $\hat{=}$ at each end of band. Use the zipper foot of your sewing machine to stitch the imitation leather band in place, stitching next to $\hat{=}$ gems $\hat{=}$. Then pin ribbon with rings and half-spheres to petersham ribbon so that edge of this ribbon meets edge of petersham ribbon. Also remove rings and half-spheres from ribbon at corners. Stitch inside edge of ribbon in place (zipper foot) or sew in place by hand. Pin petersham ribbon to wrong side of jacket, next to allowances, turning in ends of ribbon. Edgestitch ribbon in place. Stitch decorative ribbons to petersham ribbon for the hem edge, as described, but also stitch decorative ribbons to ends of petersham ribbon, 10 cm (4 ins) long at each outer edge. Turn in ends of ribbon, pin finished ribbon to lower edge of jacket between markings (right side of fabric) and stitch as far as possible. Sew ends of petersham ribbon in place by hand. Trim away allowance on outer edges of jacket.

Step 6 — Straps

Cut two pieces of petersham ribbon, each 55 cm (213/4 ins) long, for straps.

BurdaStyle

10/2010 Embellished Jacket