

Jersey Dress Plus Size 01/2011

By: burda style magazine

<http://www.burdastyle.com/projects/jersey-dress-plus-size-012011>

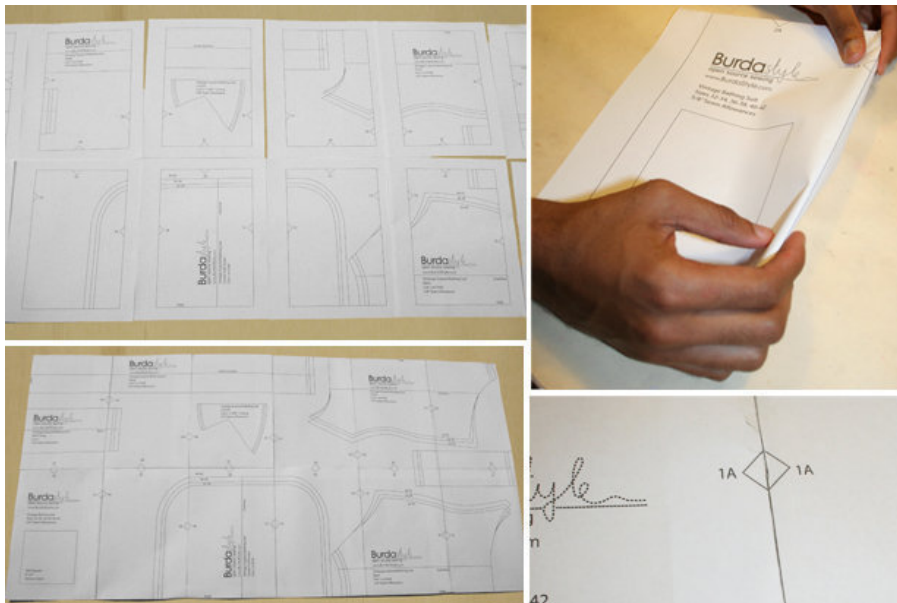


Jersey plus size dress sewing pattern. This dress is fitted and flattering for the figure. Made in wool stretch jersey makes it perfect for winter. Make it in a thinner jersey for warmer seasons. burda style magazine patterns FAQ

Materials

140 cm (55 in) wide wool jersey, length: 2.00 2.00 2.15 2.15 2.15 m (2 1/4, 2 1/4, 2 1/2, 2 1/2, 2 1/2 yds).
140 cm (55 in) wide stretch lining, length: 0.35 m (1/2 yd). Vilene/Pellon G 785. Invisible zipper, 60 cm (24 ins) long, and a special presser foot.

Step 1 — Preparations



Paper cut for ANSI A (German DIN A4) prints:

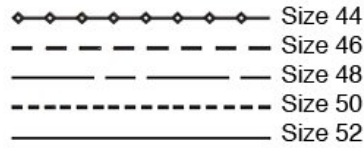
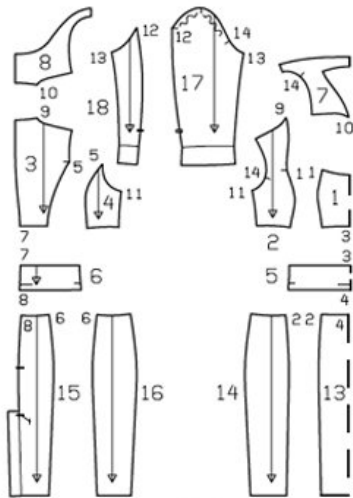
This pattern is printed on 8.5 × 11 sheets of plain paper. Do not scale or center pages before printing. Wait until all sheets are printed out before beginning to tape them together. **Do not cut out pattern pieces yet**— Arrange the sheets on a large, hard, flat surface so that they fit together, matching up like numbers and letters (i.e. 6A to 6A). To tape pattern together, fold under the margin of one piece (6A) and tape right against the line of it's matching number/letter (6A).

Trace the pattern pieces from the pattern sheet following the lines and markings for the correct size.

burda style magazine pattern do not have seam allowance included.

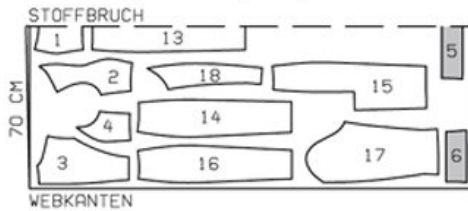
Seam and hem allowances to be added: Seams and edges 1.5 cm (5/8 in), hem 4 cm (1 5/8 ins).

Step 2 — Cutting out

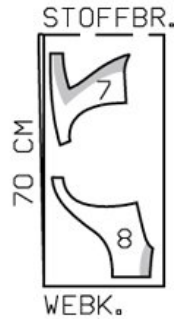


Stretch Jersey, 140 cm width, size 44, 46

Lining, 140 cm width, size 44 - 52



Stretch Jersey, 140 cm width, size 48 - 52



Webkante = Selvage
Stoffbruch = Fabric fold

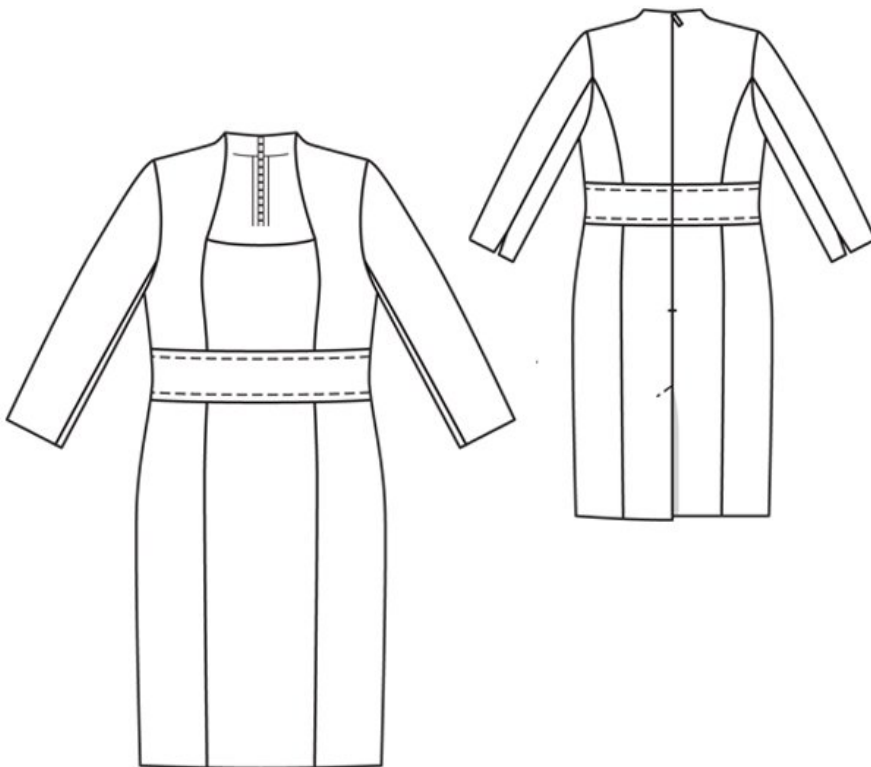
Jersey:

- 1 centre front, on a fold 1x
- 2 side front 2x
- 3 centre back 2x
- 4 side back 2x
- 5 front waistband, on a fold 1x
- 6 back waistband 2x
- 13 centre front skirt panel, on a fold 1x
- 14 side front skirt panel 2x
- 15 centre back skirt panel 2x
- 16 side back skirt panel 2x
- 17 sleeve front 2x
- 18 sleeve back 2x

Lining:

- 7 front neck facing 2x
- 8 back neck facing 2x

Step 3 — Sewing



Stitch front and back section seams of dress bodice and of skirt, beginning front section seams of bodice at upper edges, exactly at seam mark. To do this lay the pieces right sides together and line up the seams and pin together before stitching. Neaten the edges with zigzag or overlock seams and press seam allowances open. Stitch front waistband to lower front bodice edge and upper edge of skirt front. Stitch back bands to lower back bodice edges and upper edges of skirt backs. Press allowances onto bands.

Sew invisible zipper to back opening edges. Open the zip and push the coil back with your thumbnail to reveal the seam marking between the tape and the coil. Place the open zip right side down on the right fabric side of one opening edge. In order to stitch the zip in place exactly along the marked seam line, you must first calculate the distance between the tape edge and the fabric edges as follows: width of seam allowance minus 1 cm (3/8 in) tape width = distance from edge of fabric. This will yield a value of 5 mm (3/16 in) if the width of the seam allowance is 1.5 cm (5/8 in) wide. Pin the top end of the zip tape in place, the calculated distance from the edge of the fabric. The bottom end of the zip will extend past the marked end of the opening. Place the presser foot on the zip so that the coil is in the notch to the right of the needle. Stitch zip in place from the top to the marked end of the opening. Close zip. Place the other zip tape face down on the opposite opening edge and pin in place at the top. Open zip again. Place the presser foot on the top end of the zip so that the coil is in the notch to the left of the needle. Sew the zip in place from the top to the end of the opening. Close zip. Now stitch the seam below the zip, from bottom to top. Turn the loose lower end of the

zip out of the way, over the seam allowance. Stitch as close as possible to the last stitches of the zip seams. Trim away excess zip and bind the end with a scrap of fabric.

Stitch centre back seam from vent to zip. Clip seam allowance of right back diagonally into corner, at top of vent. Press seam allowances open. Press allowances on edges of vent onto left back. Narrowly hem vertical edge of underlap on right back. Topstitch left back diagonally at top of vent, catching underlap.

Stitch side seams and shoulder seams. On neck facing, stitch centre front seam, side seams, and shoulder seams.

Pin facing right sides together with neck edge of dress. At zip slit, turn facing back, about 5 mm (3/16 in) before edge of slit, and pin to upper edge. Lay allowances at edges of dress slit to outside and pin to neck edge, over facing. Stitch along neck edge, interrupting stitching at front section seams and not catching section seam allowances. Trim allowances. Clip allowance of facing into corners. Turn allowances at slit edges to inside. Lay facing up and stitch to seam allowances, as far as possible, close to seam. Turn facing to inside and sew to zip tapes and to seams. Baste facing to armhole edges.

Stitch underneath sleeve seams. Lay sleeve hem allowances to outside, on fold line, and stitch to edges of slits, exactly to marked end. Turn upper edges of hem allowances back at ends of seams and pin. Stitch back sleeve seams exactly to slit mark. Turn hem allowances to inside, press, and sew in place by hand.

Set in sleeves; turn the garment inside out and set in sleeves in each armhole, right sides facing each other, easing the sleeve caps. Pin the sleeve to the armhole and stitch around the armhole opening. Press the seam allowance out in to the sleeve.

Press hem allowance to inside and sew in place by hand. Sew facing to hem allowance.

BurdaStyle

Jersey Dress Plus Size 01/2011