

# Fatina Plus

By: burdastyle

<http://www.burdastyle.com/projects/fatina-plus>

---



The Fatina basic shift dress works great for any size and shape of body. For the Mandarin Collar variation went for an elegant office or day look using a crepe wool. We think Alden looks stunning, nothing more to add! The Scoop Neck Variation is also in a crepe wool. The bright pink works great for warm fall days, but

also looks great combined with black leggings for cooler evenings.

## Materials

Crepe wool, Charmeuse

## Step 1 — Cutting Ticket

**burda Download-Pattern  
6051- Instructions**

●●□□  
easy      körpernah

burda sizes		55 ins / 140 cm												
		34	36	38	40	42	44	46	48	50	52	54	56	58
A	yds	1 1/2	1 1/2	1 1/2	1 1/2	1 1/2	1 1/2	1 1/2	1 1/2	2 1/2	2 1/2	2 1/2	2 1/2	2 1/2
	m	1.35	1.35	1.35	1.35	1.35	1.35	1.35	1.35	2.15	2.15	2.15	2.15	2.25
B	yds	1 1/2	1 1/2	2	2	2	2 1/4	2 1/4	2 1/4	2 1/4	2 1/4	2 1/4	2 1/4	2 1/4
	m	1.65	1.70	1.75	1.75	1.75	1.80	1.80	1.80	2.30	2.30	2.30	2.35	2.35

→ with nap      \* without nap

**A:** Interfacing  
90 cm x 10 cm

**AB:**

**A:** 34-38: 60 cm;  
40-46: 65 cm;  
48-60: 70 cm;  
**B:** 34-38: 50 cm;  
40-46: 55 cm;  
48-60: 60 cm

Patternpieces:

Baumwollstoffe,  
Kreppstoffe

### PATTERN

Sizes 2 to 14 (EU 34 to 46)

A B 1 Front piece 1x

A B 2 Back piece 2x

A B 3 Bias strips / armhole 2x

A 4 Collar 4x

B 5 Bias strips / neckline 1x

Sizes 16 to 28 (EU 48 to 60)

A B 6 Front piece 1x

A B 7 Back piece 2x

A B 8 Bias strips / armhole 2x

A 9 Collar 4x

B 10 Bias strips / neckline 1x

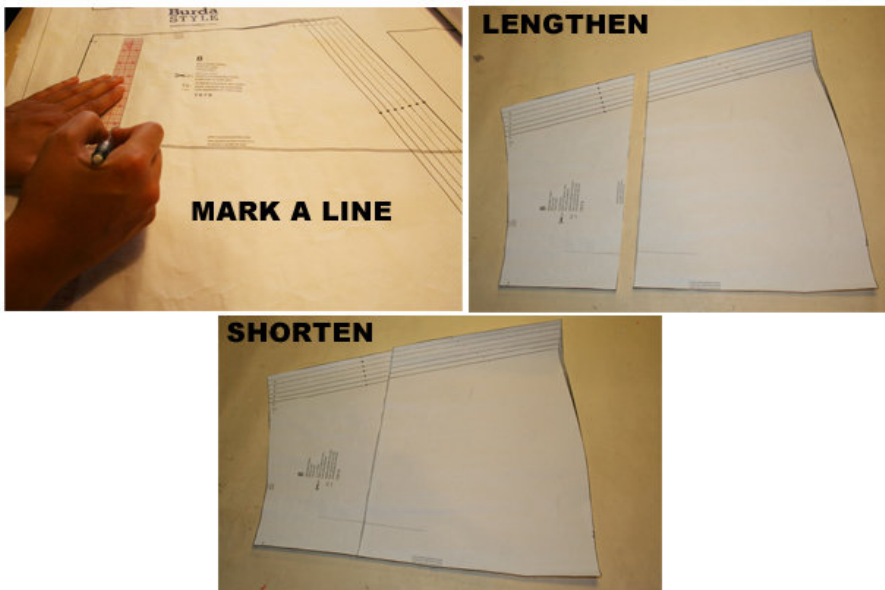
Fabrics: Cotton fabric, crepe fabric

## Step 2 — CUTTING OUT



The patterns can be printed out at the copy shop. If you decide to print them at home, follow the instructions: Paper cut for ANSI A (German DIN A4) prints:  
 The patterns are printed out for sizes 2 to 14 (EU 34 to 46) on 24 sheets / for sizes 16 to 28 (EU 48 to 60) on 30 sheets with a thin frame. Wait until all sheets are printed out. Arrange the sheets so that they fit together (see additional page with the overview of the prints). Fold the single sheets on the upper and right edge along the thin frame lines. Begin with the left lower sheet and then tape the frame lines together precisely.

### Step 3 — ADJUST PATTERN



#### ADJUST PATTERN SIZES

Select your size according to the Burda-dimension table: dresses, blouses, jackets and coats according to the bust size, trousers and skirts according to the hip width. Change the pattern to fit your measurements if they deviate from the Burda-size chart. Cut out the pattern according to your size.  
 Sizes 2 to 14 (EU 34 to 46):

A: Pattern pieces 1 to 4,

B: Pattern pieces 1 to 3 and 5.

Sizes 16 to 28 (EU 48 to 60):

A: Pattern pieces 6 to 9,

B: Pattern pieces 6 to 8 and 10

Refer to our [Adjust patterns for mixed sizes](#) technique

#### LENGTHENING OR SHORTENING THE PATTERN PIECES

Our pattern is calculated for a height of 5'6" (168 cm). If you are taller or shorter, you can adjust the pattern pieces along the lines marked "lengthen or shorten here". This way the proper fit is maintained.

Always adjust all pattern pieces along the same line to the same degree.

How to lengthen and shorten pattern pieces:

Cut the pattern pieces along the marked lines

To lengthen, slide the two halves of the pattern piece as far apart as necessary.

To shorten, overlap the two halves of the pattern piece as far as necessary. Blend the side edges.

---

## Step 4 — CUTTING OUT



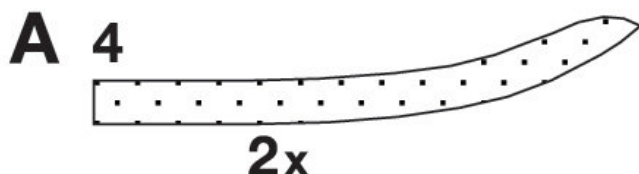
FOLD (— — — — ) means: Cut on the fold, the fold being the center of the pattern piece, but never a cut edge or seam. The piece should be cut double, with the fold line forming the center line. Pattern pieces that are outlined with a broken line in the cutting diagrams are to be placed face down on the fabric. The cutting diagrams on the pattern sheet show how the pattern pieces should be placed on the fabric.

The cutting diagrams show the placement of the pattern on the fabric.

For a single layer of fabric, the pattern pieces are pinned to the right side. For double layers of fabric, the right sides are facing and the pattern pieces are pinned to the wrong side. The pattern pieces that are shown extending over the fold of the fabric in the cutting diagram should be cut last from a single layer of fabric .

## Step 5 — SEAM AND HEMLINE ALLOWANCES AND INTERFACING

### INTERFACING



SEAM AND HEMLINE ALLOWANCES are included on an average:

1 5/8" (4 cm) for hem, 5/8" (1.5 cm) for all edges and stitches. Using BURDA copying paper, transfer the lines and signs of the pattern onto the wrong side of the fabric. Instructions can be found in the packaging.

#### Sewing

While sewing, the right sides of the fabric are facing.

Transfer all lines of the pattern onto the right side of the fabric using basting stitches. The seam numbers show how the pieces will be sewn together. The number after the slash is representative of the sizes 16 to 28 (EU 48 to 60).

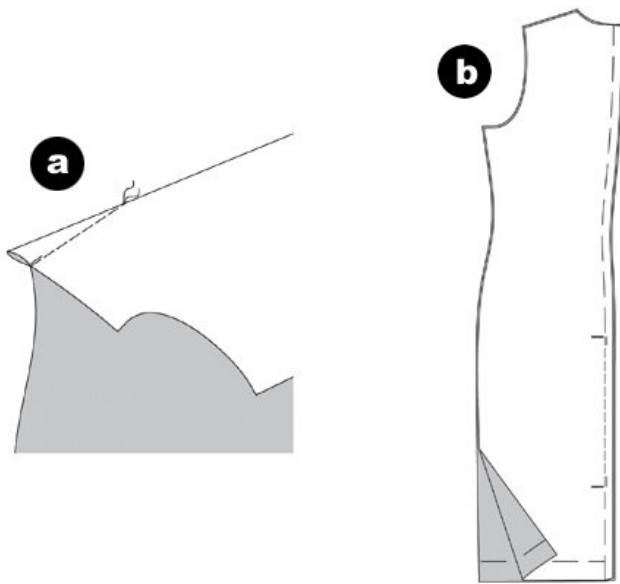
A

#### INTERFACING

Cut out the interfacing according to the cutting diagram and press it onto the wrong side of the fabric.

---

## Step 6 — DARTS, SLIT AND SHOULDER SEAMS



AB  
DRESS  
BUST DARTS

Pin the bust darts and stitch to a point. Knot threads. Press the darts downwards. (a)

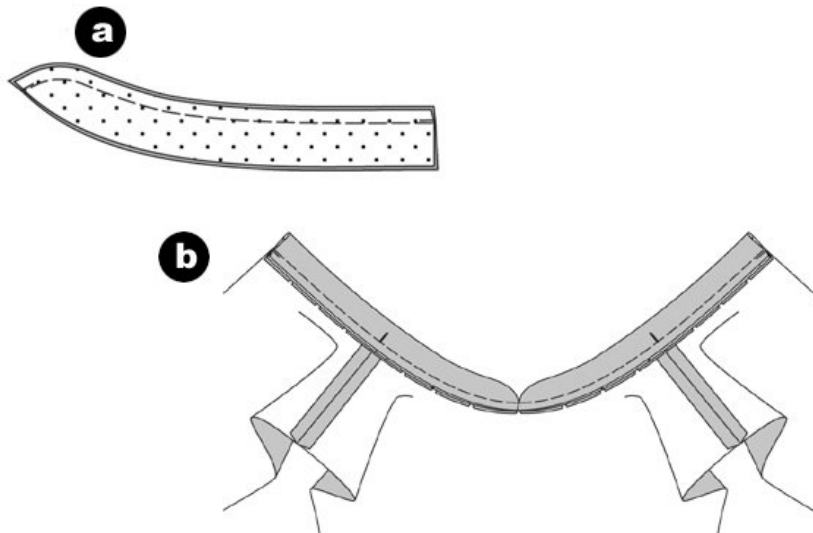
CENTER BACK SEAM / SLIT

Position the back pieces together, right sides facing. Pin the center seam. Stitch the center seam between the slit signs. Secure seam ends. Keep the slit pinned. Neaten allowances and press apart. Remove the pins from the slit. (b)

SHOULDER SEAMS

Position the front and back pieces together, right sides facing. Pin shoulder seams (seam numbers 1 / 4) and stitch. Neaten allowances and press apart.

## Step 7 — COLLAR



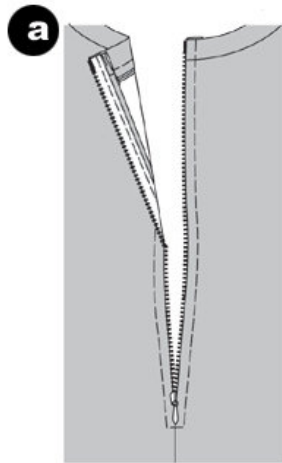
For Variation A

Position an interfaced and a non-interfaced collar piece together, right sides facing. Pin the edges and stitch. Trim allowances. Turn collar pieces. Pin edges and press. Pin the open edges together. (a)

Position the collar pieces onto the neckline (seam numbers 2 / 5), right sides facing; the cross lines meet the shoulder seams. Stitch. Trim allowances and snip in along the neckline. Neaten allowances and press inside the dress. (b)

---

## Step 8 — ZIPPER

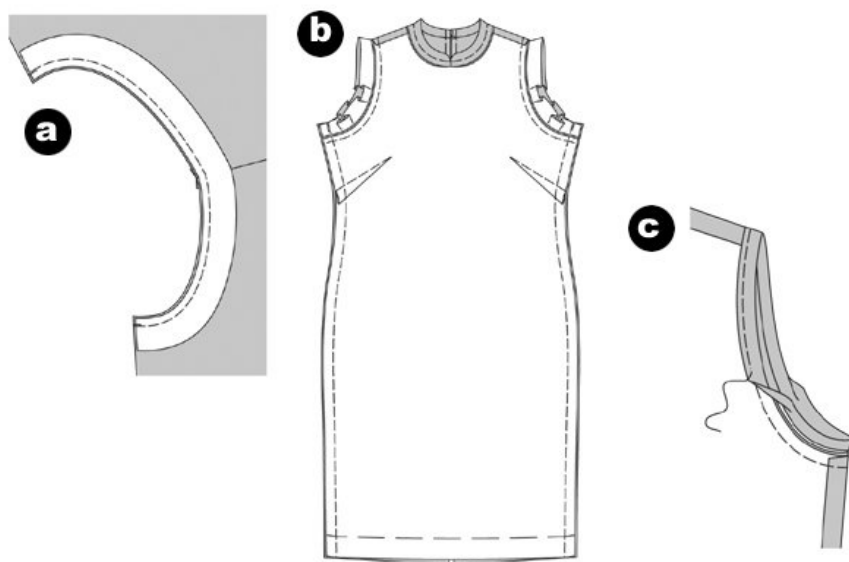


For Variation A

Turn the allowances along the slit to the inside. Position the zipper under the opening and collar edges so that the little teeth are hidden. Fold the zipper strip ends inside. Stitch the zipper using a zipper foot. (a)

---

## Step 9 — ARMHOLES AND SIDE SEAMS



Trim allowances along the armholes to  $\hat{A}1/2\hat{A}$ — (1 cm) width.

Position the bias strips on the armhole, right sides facing, and pin. Stitch  $\hat{A}1/4\hat{A}$ — (0.7 cm) wide along the armhole edge. (a)

#### SIDE SEAMS

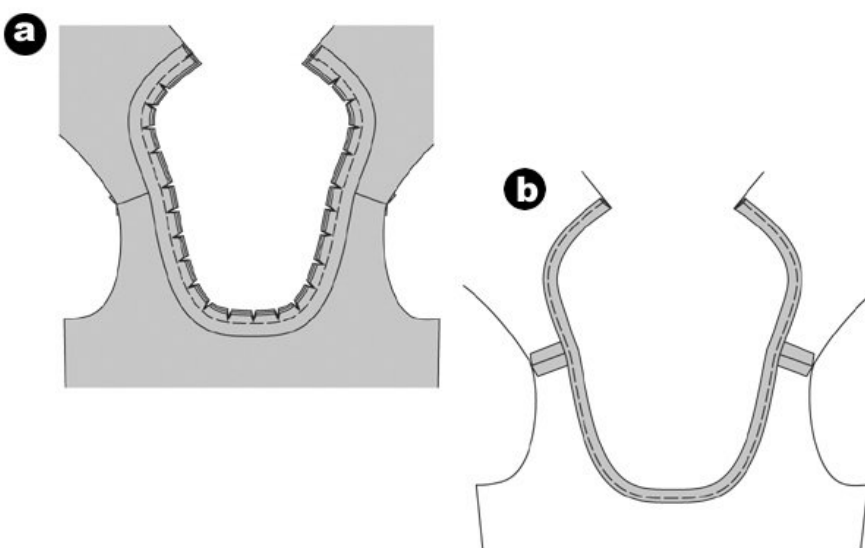
Turn the bias strips inside the armholes, over the seam line, and press.

Position the front and back pieces together, right sides facing. Pin the side seams (seam numbers 3 / 6) and stitch. Neaten allowances and press apart. (b)

Fold the bias strips over the edge to the inside, fold again and pin. On the right side of the fabric, stitch along the seam line, enclosing the bias strips. ©

---

## Step 10 — NECKLINE / BIAS STRIPS



For Variation B

Fold the bias strip lengthwise, wrong sides facing. Press.

Trim allowances along the neckline and the armholes to  $\hat{A}^{1/2}$ — (1 cm) width.

Position the bias strips onto the neckline, right sides facing. The open edges are positioned on the allowance. Stitch the bias strips  $\hat{A}^{1/2}$ — (1 cm). Trim allowances and snip in. (a)

Turn the bias strip to the inside, pin and press. Topstitch the neckline  $\hat{A}^{1/4}$ — (0.7 cm) wide, enclosing the bias strip. (b)

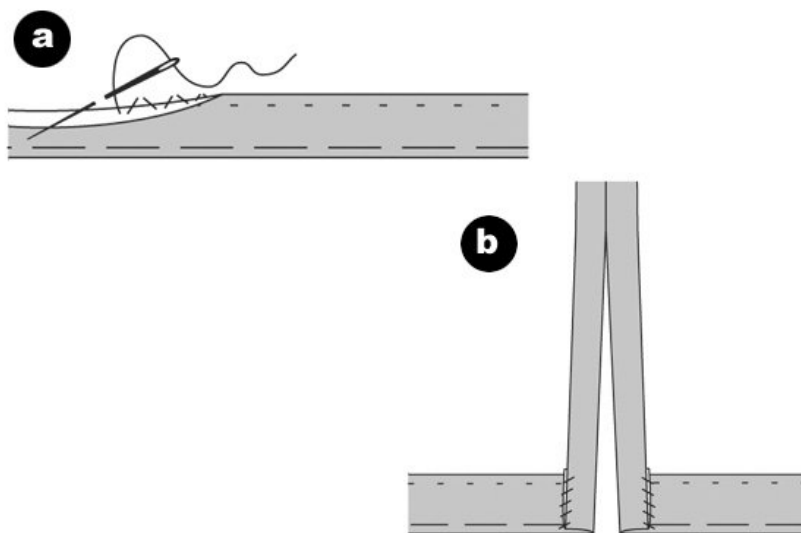
Neaten the armhole in the same way as the neckline.

Apply the zipper as described above (see A).

Stitch the side seams. Neaten allowances and press apart. Sew the armhole allowances by hand on the bias strips.

---

## Step 11 — HEMLINE / SLIT



For Variation AB

Fold the slit allowances.

Neaten hemline, fold inside and press. Sew the hemline by hand (a). Turn the slit allowances inside and sew onto the hemline (b).

---

**BurdaStyle**

Fatina Plus