

# Janina

By: burdastyle

<http://www.burdastyle.com/projects/janina>

---



Climb into the wide leg Janina pants. With hip yoke pockets and a flattering fit, you'll want to wear these to work and to play! Shown here in a medium-weight linen, but don't hesitate to try a more tailored look with a fine wool or a more casual look with a smooth cotton sateen!

# Materials

Plaid linen

## Step 1

**burda Download-Pattern  
Pants 8087 - Instructions**

easy      semi fitted

| burda sizes |     | 45 ins / 114 cm |       |       |       |       |       |       |       |       |       | 55 ins / 140 cm |       |       |       |       |    |  |  |  |  |
|-------------|-----|-----------------|-------|-------|-------|-------|-------|-------|-------|-------|-------|-----------------|-------|-------|-------|-------|----|--|--|--|--|
|             |     | 36              | 38    | 40    | 42    | 44    | 46    | 48    | 50    | 36    | 38    | 40              | 42    | 44    | 46    | 48    | 50 |  |  |  |  |
| A           | yds | 2 1/4           | 2 1/4 | 2 1/4 | 2 1/4 | 2 1/4 | 2 1/4 | 2 1/4 | 1 1/2 | 2 1/4 | 2 1/4 | 2 1/4           | 2 1/4 | 2 1/4 | 2 1/4 | 2 1/4 |    |  |  |  |  |
|             | m   | 2.25            | 2.25  | 2.30  | 2.30  | 2.30  | 2.30  | 2.50  | 1.65  | 2.00  | 2.05  | 2.05            | 2.05  | 2.15  | 2.30  | 2.30  |    |  |  |  |  |
| B           | yds | 1 1/4           | 1 1/4 | 2     | 2     | 2     | 2     | 2     | 1 1/4 | 1 1/4 | 1 1/4 | 1 1/4           | 1 1/4 | 1 1/4 | 1 1/4 | 1 1/4 |    |  |  |  |  |
|             | m   | 1.45            | 1.45  | 1.80  | 1.80  | 1.80  | 1.80  | 1.80  | 1.35  | 1.35  | 1.35  | 1.35            | 1.35  | 1.45  | 1.45  | 1.45  |    |  |  |  |  |

\* without nap

**AB:**  
Interfacing  
24" x 16"  
(60 cm x 40 cm)

A 1x      36 - 44: 4 1/2" (12 cm)  
B 3x      46 - 50: 5 1/2" (14 cm)

A: 42 1/2" (108 cm)  
B: 26" (66 cm)

A: 23 1/2" - 26 1/2"  
(60 cm - 67 cm)  
B: 23 1/2" - 28 1/2"  
(60 cm - 72 cm)

- right side
- wrong side
- interfacing
- lining
- batting

**Patternpieces:**

Linen blends, lightweight wools, gabardine

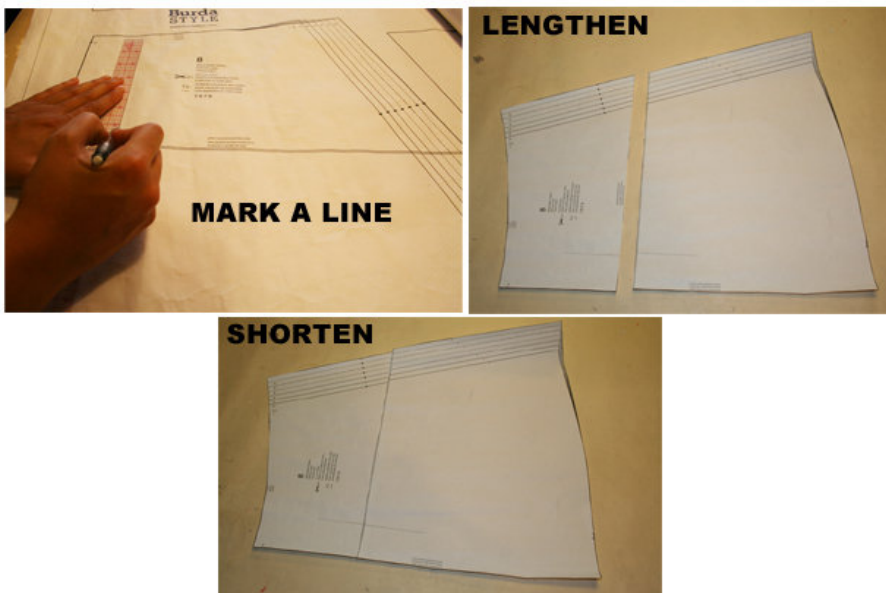
- A B 1 Front pant 2x
- A B 2 Pocket 2x
- A B 3 Haunch yoke 2x
- A B 4 Back pant 2x
- A B 5 Front waist band 4x
- A B 6 Back Waist band 4x
- B 7 Cover 4x

## Step 2



The patterns can be printed out at the copy shop. If you decide to print them at home, follow the instructions: Paper cut for US LETTER ANSI A (German DIN A4) prints: The patterns are printed out on 32 sheets with a thin frame. Wait, until all sheets are printed out. Arrange the sheets so that they fit together (see extra page with the overview of the prints). Cut off the single sheets on the upper and right edge along the thin frame lines. Begin with the left lower sheet and then glue the parts in the frame lines together precisely.

### Step 3



### ADJUST PATTERN SIZES

Select your size according to the Burda Size Chart: Dresses, blouses, jackets and coats according to the bust size,

trousers and skirts according to the hip width. Change the patterns about those inches (cm) if necessary, to fit your measurements if they deviate from the Burda Size Chart. Cut out the pattern according to your size. (a) Refer to our 'Adjust patterns for mixed sizes' technique

= Upper waist band edge 3/5" (1.5 cm) below the waist. For sizes 10 to 22 draw the stitch line for the zipper on piece 1. The length between the zipper and stitch line should remain the same regardless of size. (see size 8)

#### LENGTHENING OR SHORTENING THE PATTERN PIECES

Our pattern is calculated for a height of 5' 6" (168 cm). If you are taller or shorter, you may adjust the pattern to fit your size. Choose your size at the lines marked "lengthen or shorten here". Thus the proper fit is preserved. Make sure that you adjust all pieces of one pattern by the same amount at the same lines. (b)

How to lengthen and shorten pattern pieces:

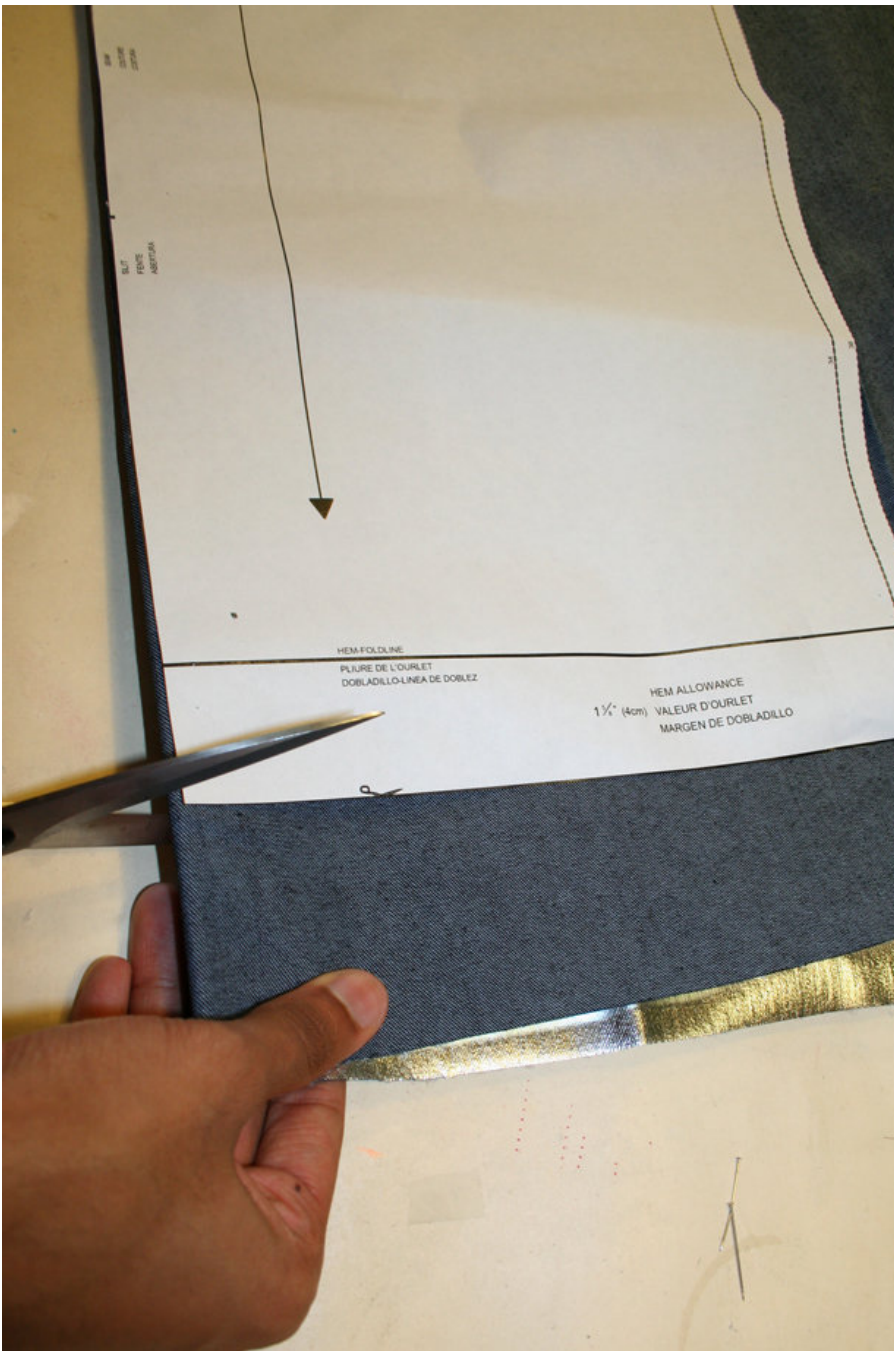
Cut the pattern pieces along the marked lines.

To lengthen, slide the two halves of the pattern piece as far apart as necessary.

To shorten, overlap the two halves of the pattern piece as far as necessary. Even out the side edges. ©

---

## Step 4



## CUTTING OUT

FOLD ( ) means: here is the center of a pattern piece but never a cut edge or a seam. The piece should be cut

double, with the fold line forming the centre line. Pattern pieces that are outlined with a broken line in the cutting diagrams are to be placed face down on the fabric. The cutting diagrams on the pattern sheet show how the pattern pieces should be placed on the fabric. (a)

The cutting diagrams show the placement of the pattern on the fabric.

A B

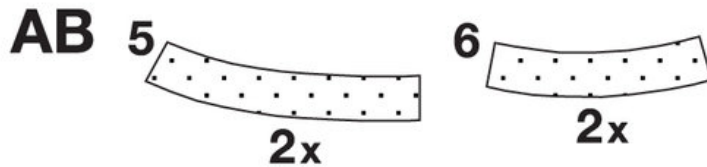
For a single layer of fabric, the pattern pieces are pinned to the right side. For double layers of fabric, the

right sides are facing and the pattern pieces are pinned to the wrong side. The pattern pieces that are shown in the cutting diagram, extending over the fold of the fabric, should be cut last from a single layer of fabric. (b)

---

## Step 5

### INTERFACING



SEAM AND HEMLINE ALLOWANCES are included on an average:

1 5/8" (4 cm) for the hem, 5/8" (1.5 cm) for all edges and stitches. Use BURDA carbon paper to transfer all pattern

lines and marks onto the left side of the fabric pieces. You will find instructions in the packet.

### Interfacing

Cut interfacing according to the drawing and press onto the left (wrong) fabric side

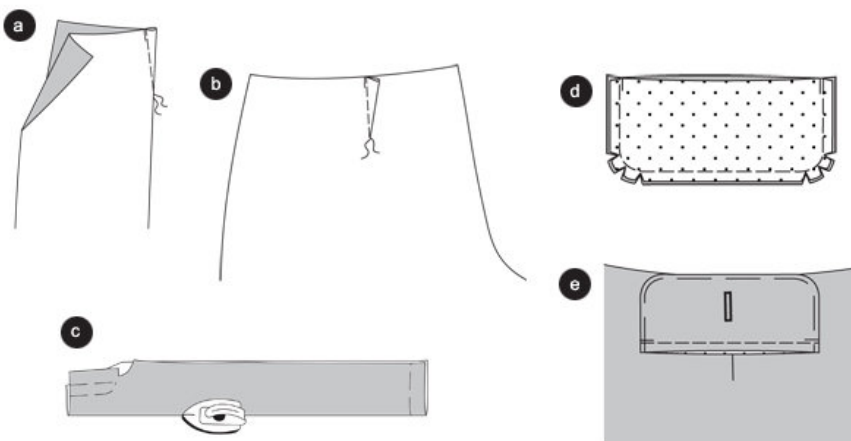
### SEWING

When sewing, the right sides of the fabric should be facing.

Transfer all lines on the pattern using a basting stitch onto the right side of the fabric.

---

## Step 6



A B

Pant dart

Stitch dart of the back pant. Knot thread ends (a). Press darts towards the center back (b).

A

Crease

Fold front pant at the marked CREASE line, turned inside out. Press crease. ©

B

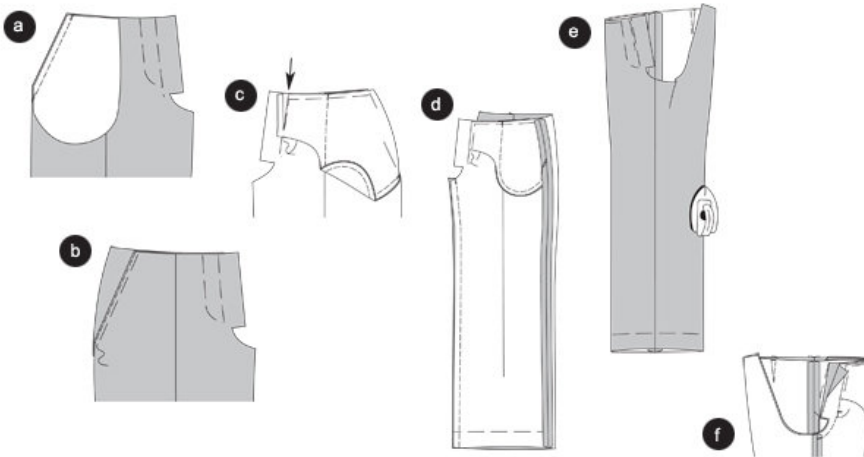
Covers / back pant

Position the cover piece with interfacing onto a cover without interfacing, with right sides facing. Stitch edges according to drawing. Trim allowances and neaten. Turn right side out. Baste edges, press. Trim allowances of the edges and neaten. Insert a button hole into the cover. (d)

Baste right side of the cover onto the line and stitch. Secure stitch ends. Press cover downwards. (e)

---

## Step 7



A B

Hip yoke pockets

Position pockets onto the front pant, right sides facing, baste pocket opening edges together (seam 1) and stitch. Trim allowances. Fold pockets inside and baste. Press edge and stitch topstitch close to the edge. (a)

Pin the front pant onto the hip yoke, so that the pocket opening meets the placement line. Rights sides of pocket and haunch yoke are facing. Baste pocket opening edges. (b)

Baste pocket onto the hip yoke, Leave the front pant aside and do not baste. Stitch. Neaten allowances. Baste the side, upper and front edges of the hip yoke onto the front pant. Attention, trim off the allowance of the front edge of the right haunch yoke at the front center (arrow). ©

A B

Side seams /Inner pant leg seams

Position front pants onto back pants, right sides facing, baste side seams and inner pant leg seams (seam 3) and stitch. (d)

Drawing shows A  
Neaten allowances and press apart  
A

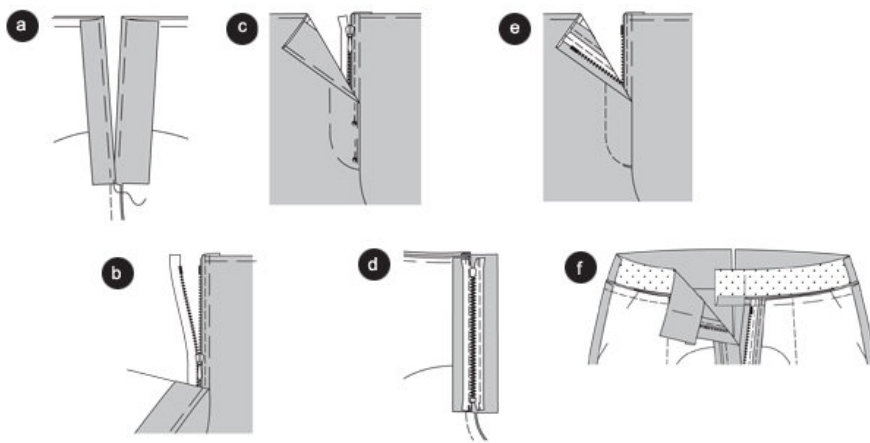
Fold pant legs so that the inner leg seam faces the side seam, inside out. Press the CREASE into the inner pant side. (e)

A B  
Front center seam

Fold a pant leg inside out. Move pant legs into one another, right sides facing. Sew center front seam from slit mark on the diagram towards the inner pant leg seams. Neaten seam ends. Trim allowances at the curvatures. Neaten allowances, also the allowances of the front covers. (f)

---

## Step 8



### Zipper

Baste inside the fly cover of the right front pant at the front center. = Allow the cover a 2/5â' (1 cm) underlap at the left front pant, that will cover the zipper later on. Fold and baste rest cover, press. (a)

Baste Fly Facing close to the zipper teeth onto the zipper tape and stitch narrowly. (b)

Close zipper. Close and pin slit center onto center. ©

Baste zipper tape onto the right border, being sure not to catch the pant pieces. Stitch. (d)

Stitch right slit edge as marked, including the cover. (e)

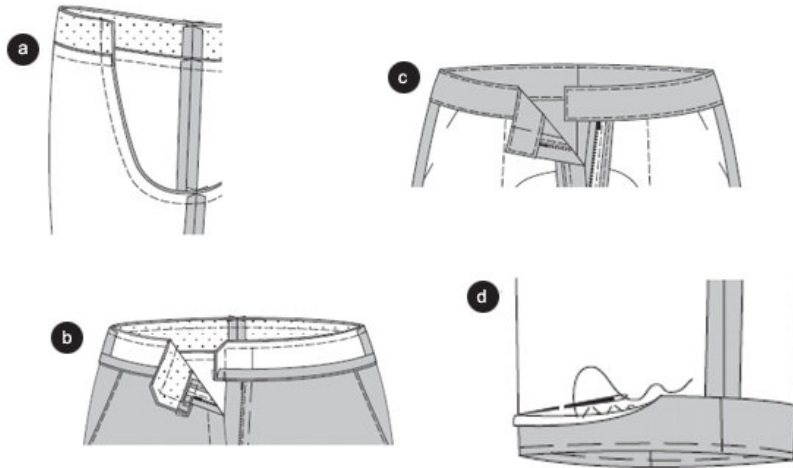
### Waist band

Position front waistbands onto the back waist bands (all including interfacing), right sides facing. Stitch side seams (seam 4). Stitch side seams without interfacing the same way. Press allowances apart.

Baste waistbands including interfacing onto upper pant edges (seam 5), facing right to right, side seams meet. Stitch. Trim allowances and fold and press inside the waist. (f)

---

## Step 9



### Center Back Seam

Move pant legs into one another facing right to right. Stitch back center seam, through the waist band as well, so the waist entry seams meet. Press allowances apart from top downwards to the curvatures. Stitch the back center seam on the waist band pieces without interfacing. Press allowances apart. Press the allowance of the bottom waistband edge upwards. (a)

Pin waistband onto the already stitched waistband, right sides facing, with side seams and back center seam meet. Stitch upper edge onto front edges - right hand at the front center, left hand at the edge of the fly facing underlap. Trim allowances, cut corners diagonally. (b)

Turn waistband. Baste edges, press. Baste inside half of waistband onto the entry seam. Stitch waistband edges narrowly, stitch the inner half. Sew a buttonhole into the right front waist band edge. Apply **BUTTON** onto underlap. ©

### B

Apply button, matching the cover, onto the back pant, using an interfacing supporting piece of fabric.

### Hem

Neaten hem, fold and baste, press. Hand sew hem. (d)

---

**BurdaStyle**

Janina