

Francesca: Long Plus Size Dress

By: burdastyle

<http://www.burdastyle.com/projects/francesca-long-plus-size-dress>



We love getting design suggestions from our members, and here is another one: Our lovely plus size evening gown. Elegant, flowing, and flattering, this pattern offers loads of room for variations and fun. Depending on your design choices, you can make it dressy or casual, short or long. Enjoy!

Materials

cotton voile, silk chiffon, zipper, interfacing

Step 1

**burda Download-Pattern
dress 6024 – Instructions**

average fitted

burda sizes		55 ins / 140 cm							
		46	48	50	52	54	56	58	60
I	yds	3 ³ / ₄	3 ³ / ₄	3 ³ / ₄	4 ¹ / ₂	4 ¹ / ₂	4 ¹ / ₂	4 ¹ / ₂	4 ¹ / ₂
	m	3.30	3.30	3.30	4.00	4.00	4.00	4.00	4.00
		→	→	→	→	→	→	→	→
II	yds	1 ¹ / ₂	1 ¹ / ₂	1 ¹ / ₂	1 ¹ / ₂	1 ¹ / ₂	1 ¹ / ₂	1 ¹ / ₂	1 ¹ / ₂
	m	1.25	1.25	1.25	1.25	1.25	1.25	1.25	1.25
		→	→	→	→	→	→	→	→

→ with nap

Interfacing
90 cm x 50 cm

60 cm
nahtverdeckt

192-234 cm

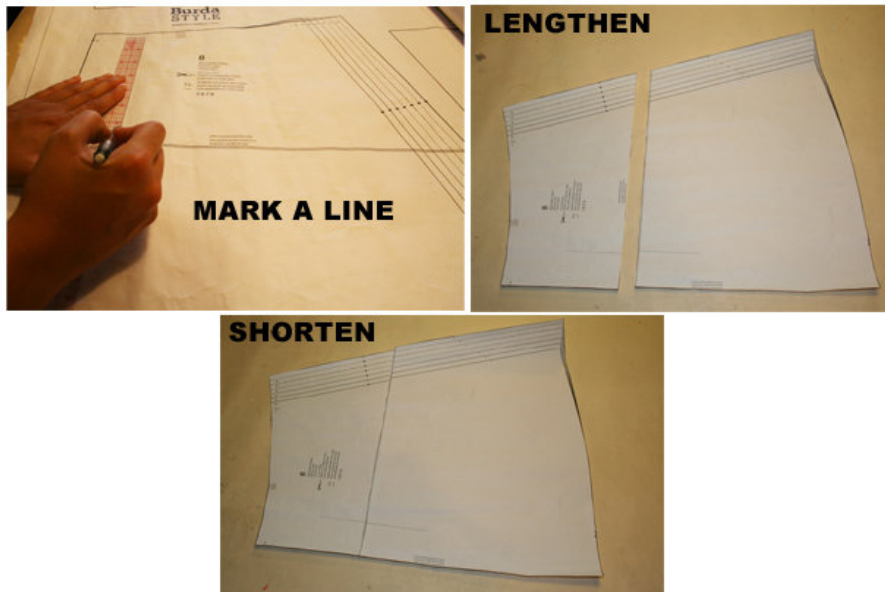
I: Taft
II: Chiffon

PATTERN

- 1 Front center piece 1x
- 2 front side piece 2x
- 3 back center piece 2x
- 4 Back side piece 2x
- 5 front application (chiffon) 2x
- 6 Front facing 1x
- 7 back facing 2x
- 8 Sleeves 2x
- 9 Sleeve cuffs 2x
- 10 Front placket 1x
- 11 Back placket 2x
- 12 Front center skirt panel 1x
- 13 Front skirt panel (right) 1x
- 14 front and back side skirt panel 4x
- 15 Back center skirt panel 2x
- 16 Front center skirt panel (chiffon) 1x

Fabrics: I: taffeta, II: chiffon

Step 2



The plus size dress pattern is so large that it does not have a print at home version, only the copy shop version. Select your size according to the Burda-dimension table: dresses, blouses, jackets and coats according to the bust size, trousers and skirts according to the hip width. If necessary, change the pattern to fit your measurements if they deviate from the Burda-size chart. Cut out the pattern according to your size. Refer to our “ Adjust patterns for mixed sizes” technique

LENGTHENING OR SHORTENING THE PATTERN PIECES

Our pattern is calculated for a height of 5’6” (168 cm). If you are taller or shorter, you can adjust the pattern pieces along the lines marked “lengthen or shorten here”. In this way the proper fit is maintained. Always adjust all pattern pieces along the same line to the same degree.

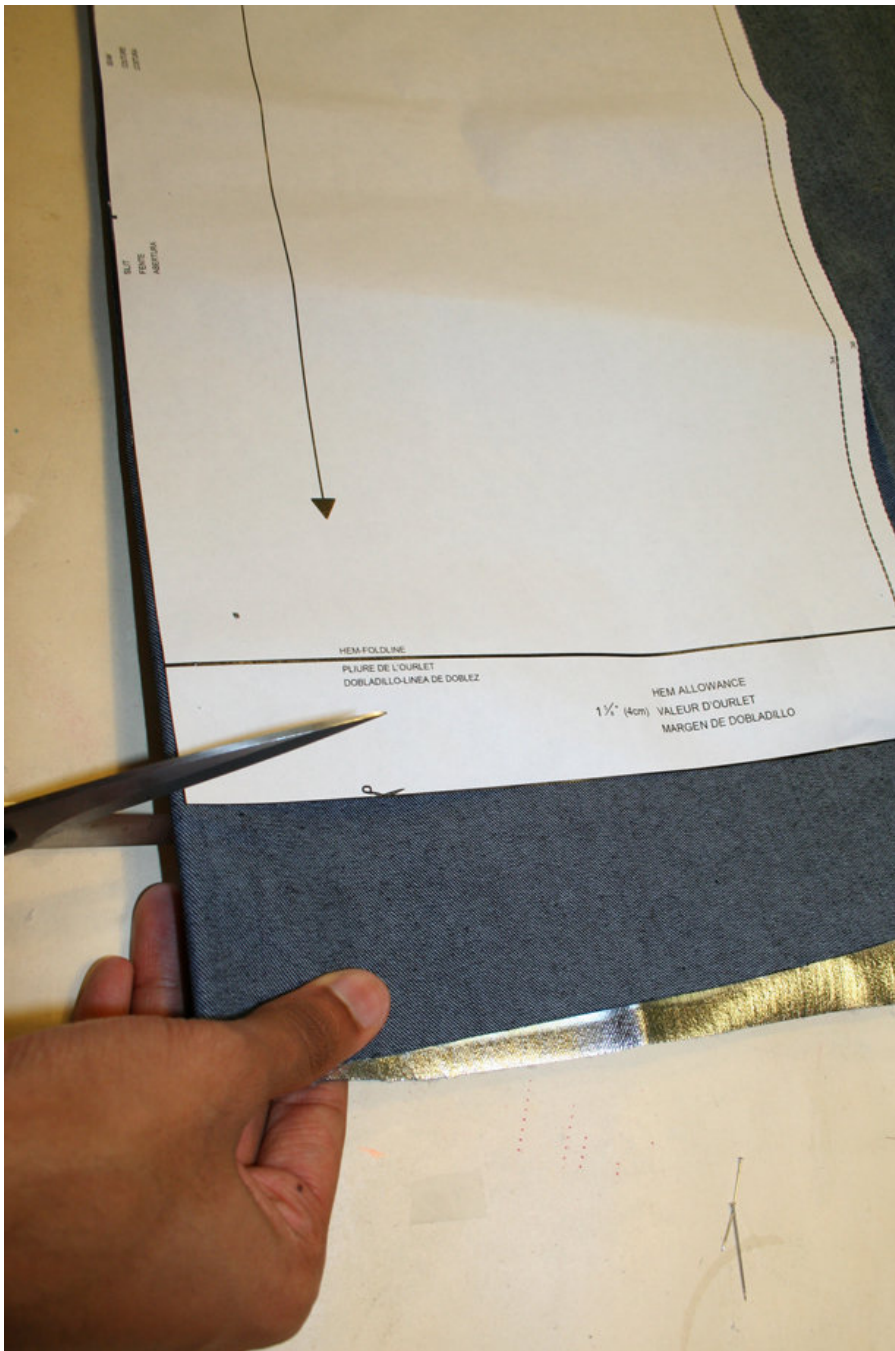
How to lengthen and shorten pattern pieces:

Cut the pattern pieces along the marked lines.

To lengthen, slide the two halves of the pattern piece as far apart as necessary.

To shorten, overlap the two halves of the pattern piece as far as necessary. Blend the side edges.

Step 3



CUTTING OUT

FOLD () means: here is the center of a pattern piece but never a cut edge or a seam. The piece should be cut double, with the fold line forming the center line. Pattern pieces that are outlined with a broken line in the cutting diagrams are to be placed face down on the fabric. The cutting diagrams on the pattern sheet show how the pattern pieces should be placed on the fabric. The cutting diagrams show the placement of the pattern on the fabric. Fabric I, fabric II and tulle.

Cut pieces 1 to 4 and 6 to 15 from fabric II. For a single layer of fabric, the pattern pieces are pinned to the right side. For double layers of fabric, the right sides are facing and the pattern pieces are pinned to the wrong side. The pattern pieces that are shown extending over the fold of the fabric in the cutting diagram should be cut last from a single layer of fabric.

Important: Piece 13 (front center skirt panel) is an asymmetric piece and will be cut once only. When cutting out place the pattern with its wrong side facing the right side of the fabric, and cut.

Step 4

SEAM AND HEMLINE ALLOWANCES are included on an average: 5/8" (1.5 cm) for all edges and stitches. Using BURDA copying paper, transfer the lines and signs of the pattern onto the left fabric side. Instructions can be found in the packaging.

LINING

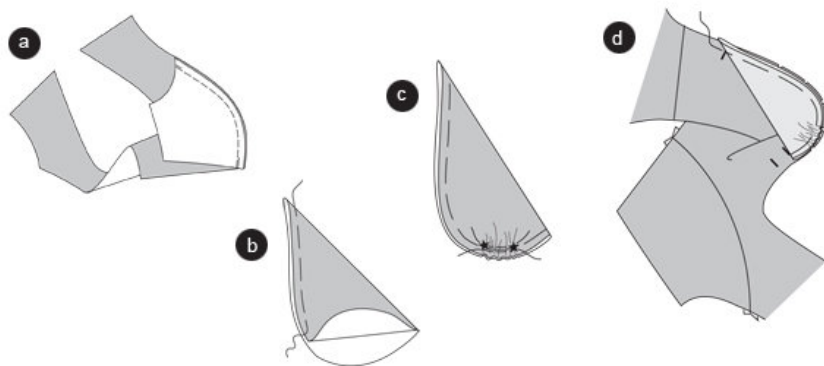
Cut the lining pieces according to the cutting diagram and press onto the wrong fabric side.

Sewing

While sewing, the right fabric sides are facing.

Transfer all lines of the pattern onto the right fabric side using basting stitches

Step 5



DRESS / top

Princess seams

Position the front side pieces on the front center piece, right sides facing. Pin the princess seams (seam 1) and stitch. Stitch the back princess seams the same way (seam 2). Trim allowances, neaten and press apart (a).

Shoulder seams

Position the back pieces on the front piece, right sides facing. Pin the shoulder seams (seam 3), thereby gathering the shoulder edges. Stitch. Neaten allowances and press apart.

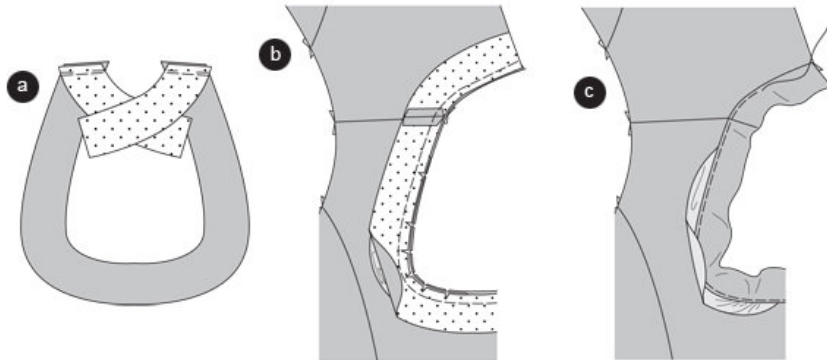
Neckline / chiffon inlay

Fold the inlays along the fold line, wrong sides facing. Pin raw edges together (b).

Double stitch the inlays along the curve from * to *, using basting stitches. Leave the threads long. Hold the bobbin thread and gather the fabric until the inlay fits into the neckline between seam 4 and 5. Knot threads. Distribute the width equally ©.

Pin the inlay between the cross lines of seam 4 and 5 on the neckline. Snip in the allowances of the neckline edge along the curve (d).

Step 6

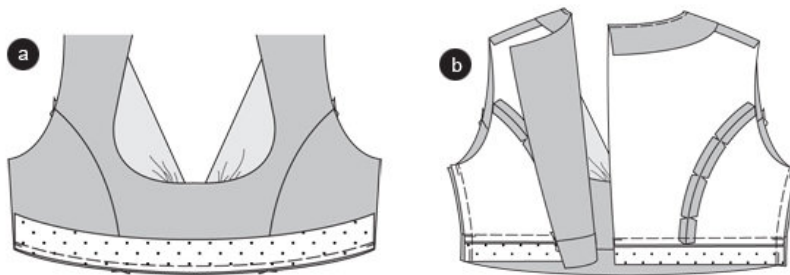


Facing

Position the back facing on the front facing, right sides facing. Stitch shoulder seams (seam 6). Press the allowances apart. Neaten the placket edges (a).

Pin the facing on the neckline, right sides facing, the chiffon inlays enclosed. Snip in the facing allowance along the neckline curve. Stitch the facing onto the neckline. Trim allowances, snip in (b). Press the facing over the allowance into the neckline. Topstitch the facing narrowly, thereby catching the allowances ©. Fold the facing inside, pin the edges and press.

Step 7



Waistband

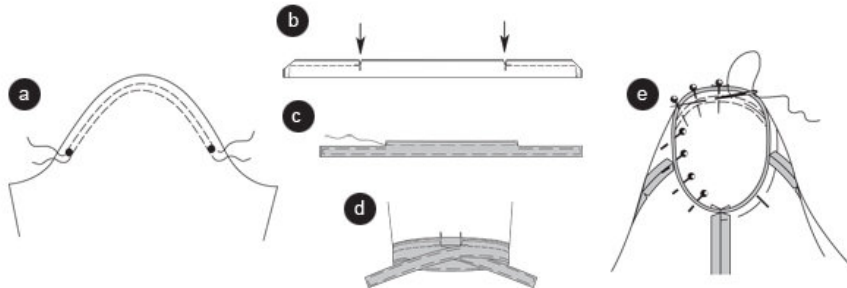
Pin the front waistband on the bottom edge of the front piece, right sides facing (seam 7), stitch (a).

Pin the back waistband on the bottom edge of the back piece, right sides facing (seam 8), stitch. Trim allowances and press inside the facing. Topstitch the waistbands narrowly.

Side seams

Position the back piece on the front piece, right sides facing. Pin side seams (seam 12), stitch. Neaten allowances and press apart (b).

Step 8



Sleeves

Double stitch the sleeve cap between * and *, using basting stitches (a).

Sleeve seams

Fold the sleeves, right sides facing. Pin the sleeve seams (seam 13) and stitch. Neaten allowances and press apart.

Sleeve cuffs with straps

Fold the sleeve cuffs along the fold line, right sides facing. Stitch the narrow sides and raw edge together up to the cross lines 14 and 15 respectively. Secure seam ends. Trim allowances and snip in at the cross lines (arrows), cut the corners diagonally (b). Turn the cuff with straps, pin the edges and press. Pin the raw edges between the cuts together ©.

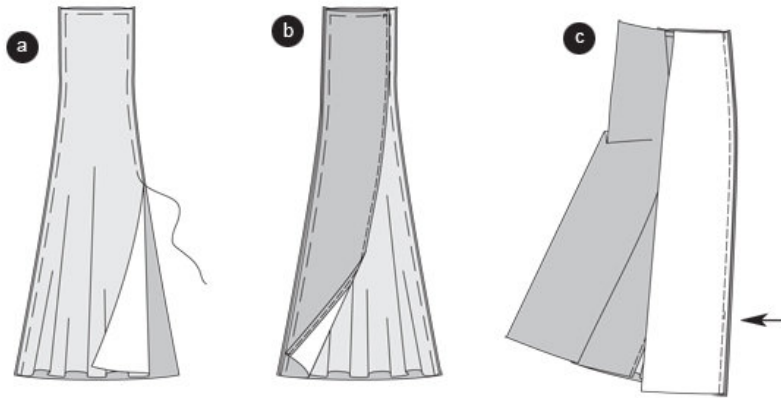
Pin the raw edges of the cuffs on the lower sleeve edge, right sides facing. The straps overlap from seam 14 and 15 respectively. Topstitch cuff. Neaten allowances and press inside the sleeve (d).

Apply sleeve

To gather the sleeve cap slightly tighten the bobbin threads.

Pin the sleeve to the armhole, right sides facing. For the application of the sleeve 4 points have to be considered for the right "fit". The cross lines of sleeve and front piece have to meet. Sleeve and side seams have to meet. The cross line of the sleeve cap has to meet the shoulder seam. The gathered width has to be distributed in a way that does not pucker or create pleats. Pin the sleeve on the sleeve side and stitch. Trim allowances, neaten and press inside the sleeve (e).

Step 9



Skirt

Front skirt panels

Position the center skirt panel made out of chiffon (piece 16) on the center skirt panel made of fabric (piece 12), the wrong side is facing the right side. Pin the side and top edges together. Fold the allowance of the right center skirt panel (piece 13), along the curved front edge, to the inside and pin. Press and topstitch the allowance narrowly (a).

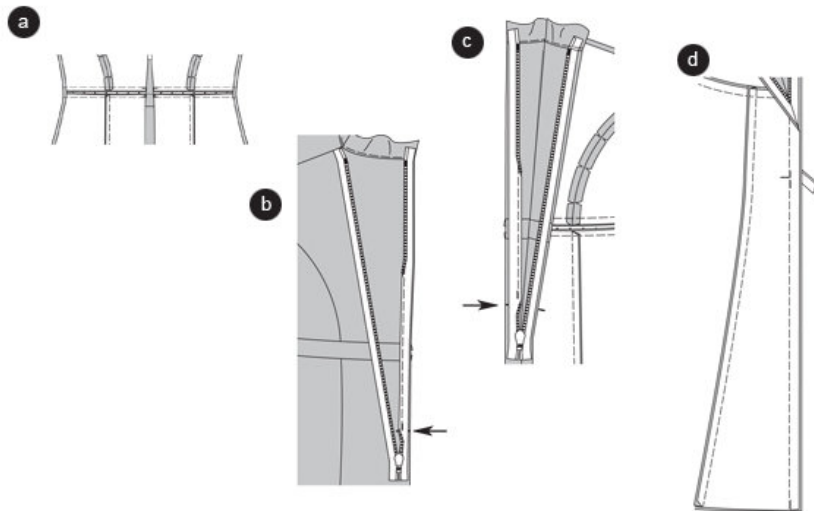
Position the skirt panel on the chiffon skirt panel, wrong side facing the right side. Pin the right and top Edges (b).

Position the side skirt panels on the front center skirt panels, right sides facing. Pin the front princess seams (seam 9). Stitch the seams from the top to 4" (10 cm) above the hemline (arrow). Neaten allowances leaving a margin of 4" (10 cm) from the hemline. Press allowances inside the side skirt panels. Stitch the other side skirt panels on the back center skirt panels according to the text and drawing 15 (seam 9), thereby stitching to the bottom edge. Neaten allowances and press inside the side skirt panels ©.

Side seams

Position the back skirt panels on the front skirt panels, right sides facing. Pin the side seams and stitch. Neaten allowances and press apart.

Step 10



Apply skirt

Pin the skirt onto the bottom placket edge of the top piece (seam 10/11), the side seams meet. Stitch, Neaten allowances and press inside the waistband (a).

Zipper (hidden through the seam)

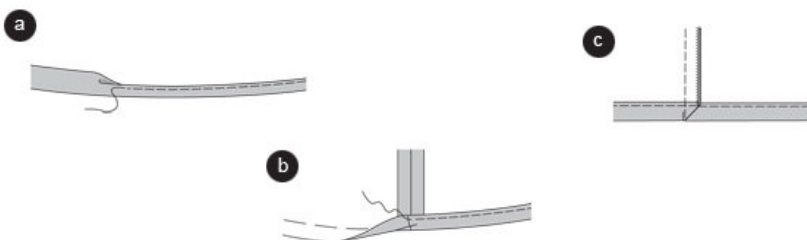
The zipper will be invisible after applying. The zipper needs to be a little bit longer than the opening. It will be applied before stitching the back center seam below the opening. The use of a zipper foot is required. Neaten the allowances of the back dress edges.

Open the zipper. Pin the zipper with its right side onto the allowance of the opening. The little teeth are exactly positioned on the marked opening edge. Stitch both straps of the zipper closely along the teeth line (17a), thereby stitching from the top to the opening sign. Close the zipper (b).

Back center seam

Position the back pieces together, right sides facing. Stitch the center seam from the bottom to the opening sign. Slightly pull the zipper. Secure seam ends. Press allowances apart. Fold the facing along the back neckline inside. Fold the ends of the facing and stitch onto the zipper straps ©.

Step 11



Hemline

Fold the hemline allowance along the front skirt panel (chiffon) and the right center skirt panel inside, fold again and stitch (a).

Neaten the allowance along the front center skirt panel (dress fabric) and along the side and back skirt panels. Fold inside and press. Topstitch the hemline (b).

Stitch the front princess seams, thereby stitching over the allowance. Fold the bottom edges of the allowances diagonally and stitch together. Neaten other allowances and press to the side ©.

BurdaStyle

Francesca: Long Plus Size Dress