

02/2012 Two tone dress

By: burda style magazine

<http://www.burdastyle.com/projects/022012-two-tone-dress>



Two tone dress burda style magazine patterns FAQ

Materials

Crpe satin with widthwise stretch, Use only fabrics with two good sides, one shiny side and one matte side.
Fabric width: 135 cm (53 ins) Fabric length: Size 36: 1 m (1 1/8 yds.) of color 1 (teal) and 0.95 m (1 1/8 yds.) of color 2 (magenta) Size 38 & 40: 1.05 m (1 1/4 yds.) of color 1 (teal) and 0.95 m (1 1/8 yds.) of color 2 (magenta) Size 42 & 44: 1.10 m (1 3/8 yds.) of color 1 (teal) and 1.40 m (1 5/8 yds.) of color 2 (magenta)
Vilene bias tape/stay tape 1 invisible zipper, 60 cm (24 ins) long, and a special presser foot. 1 small sew-on snap fastener.

Step 1 — Preparation



Paper cut for ANSI A (German DIN A4) prints:

This pattern is printed on 8.5 × 11 sheets of plain paper. Do not scale or center pages before printing. Wait until all sheets are printed out before beginning to tape them together. **Do not cut out pattern pieces yet**— Arrange the sheets on a large, hard, flat surface so that they fit together, matching up like numbers and letters (i.e. 6A to 6A). To tape pattern together, fold under the margin of one piece (6A) and tape right against the line of it's matching number/letter (6A).

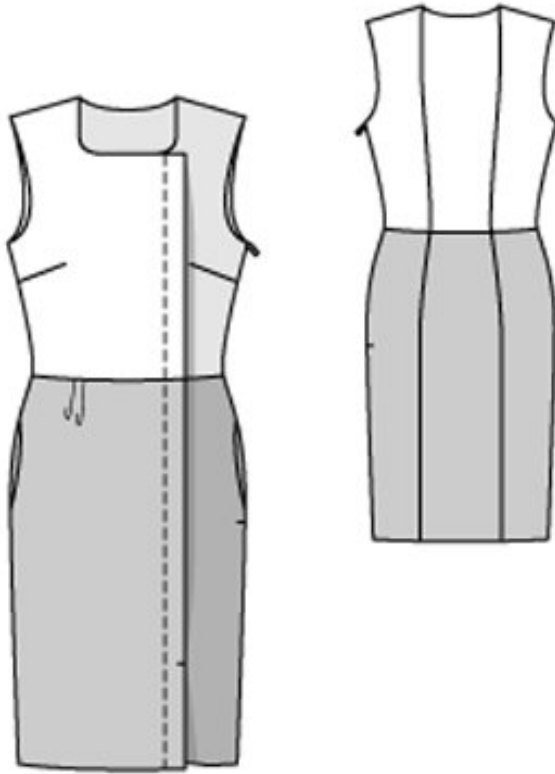
Trace the pattern pieces from the pattern sheet following the lines and markings for the correct size and the correct style (110A). (This pattern also includes pattern pieces, lines and markings for style 110B that should be ignored.)

Trace the pocket pieces from pieces 5 and 6 as separate pattern piece. They are the same for all sizes. The stitching line on piece 1 is marked for size 36. For sizes 38-44, mark the stitching line at the same width.

burda style magazine pattern do not have seam allowance included.

Seam and hem allowances to be added: Seams and edges 1.5 cm (5/8 in), hem 4 cm (15/8 ins).

Step 2 — Cutting out



Fabric color 1 (teal):

- Pattern piece 1- right front, cut on a fold 1x
- Pattern piece 2 – left front, cut, 1x
- Pattern piece 3 – centre back, cut on a fold 1x
- Pattern piece 4 – side back piece, cut 2x

Fabric color 2 (magenta):

- Pattern piece 5 – right front skirt panel, cut 1x
- pocket piece, cut 2x
- Pattern piece 6 – left front skirt panel 1x
- pocket piece , cut 2x
- Pattern piece 7 – centre back skirt panel, cut on a fold 1x
- Pattern piece 8 – side back skirt panel, cut 2x

Lining:

- Pattern piece 2 – left front, cut 1x
- Pattern piece 3 – centre back, cut on a fold 1x
- Pattern piece 4 – side back piece, cut 2x

Use the shiny satin side of the fabric as the right side of the left front and left front skirt panel.
Use the matte side as the right side of the other pieces.

Iron strip of interfacing, 4 cm (15/8 ins) wide, to inside front half of piece 1.

Iron Vilene Bias Tape/ stay tape to wrong side of inside pieces, on neck and armhole edges.

Step 3 — Sewing

Darts

Stitch the bust darts and press them down. Stitch the dart on the left front skirt panel and press this dart forward. Fold the pleats on the right front skirt panel in the direction of the arrows and tack stitch them in place.

Neaten the edge of self-facing on the right front skirt panel, press to inside, and tack to upper edge.

Press the seam allowance on front edge of left front skirt panel to the inside and stitch.

Front piece pleat

Stitch the right front skirt panel to the right front (seam number 1), leaving the inside front half extending. Stitch the left front skirt panel to the left front (seam number 2), leaving the seam allowance on the front edge extending. Press the allowances of the skirt joining seam up.

Stitch the section seams of the bodice back and the skirt back. Press the seam allowances open. Stitch skirt back panel to bodice back. Press the seam allowances up.

Stitch the shoulder seams. Press seam allowances open.

Bust darts and back section seams

On the fabric pieces for bodice lining, stitch the bust darts and stitch the back section seams. On the right front, turn the inner half (= lining piece) to the outside and stitch the shoulder seams of lining.

Facing and lining

Face the neck edge, left front edge, and armholes with lining: Stitch the lining right sides together with the neck edge, left front edge, and armhole edges. Trim the seam allowances, trimming the corners diagonally. Clip allowances several times along curves for better turning. Turn the fronts and back right side out by pulling the fronts through the shoulder tunnels to the back. Press the faced edges and the right front edge.

Stitch right side seam of main fabric and lining as one continuous seam. Do not stitch across pocket openings.

Right inseam pockets

Pin the pocket pieces right sides together with the seam allowances of pocket openings and stitch in place, directly along marked seam lines. Press pocket pieces forward and stitch together. Sew the left inseam pocket as instructed for trousers style 114.

Invisible zipper

Beginning at armhole, sew in visible zipper to left side slit edges. Stitch the left side seam from the lower edge to the zipper. Trim the bottom end of the zipper approx. 2 cm (3/8 in) below the end of slit and bind with a scrap of fabric. Turn in top ends of zipper tapes and sew in place. Turn in the lining and sew to the zipper tapes and to the skirt joining seam.

Hemlines

At the hem edge, turn the facing on the right slit edge forward again. Press the hem allowance to the inside and sew in place by hand. Turn the facing to the inside again and sew to the hem edge. Topstitch 3.5 cm (1 1/2 ins) from the front edge of the right skirt front, from the hem edge to the slit mark.

Topstitch the right bodice front as marked, from the upper edge to the seam mark. On the left bodice front and left skirt front, use vanishing chalk or tack stitching to mark the placement line, at the same width from the upper to the lower edges as continuous line. Pin right bodice front and right skirt front to the left pieces, to meet marked placement line. With a continuous seam, stitch the right front, below the mark, and the right skirt front to the left side, down to the bottom slit mark. At top of slit, stitch right fold edge horizontally, approx. 1 cm (3/8 in) long.

Fasten the upper right front corner to the left front, with one snap fastener.

BurdaStyle

02/2012 Two tone dress