

10/2011 Little black dress with lace inset

By: burda style magazine

<http://www.burdastyle.com/projects/102011-little-black-dress-with-l>



Dress with front lace detail burda style magazine patterns FAQ

Materials

Crpe satin

Step 1 — Preparation



Paper cut for ANSI A (German DIN A4) prints:

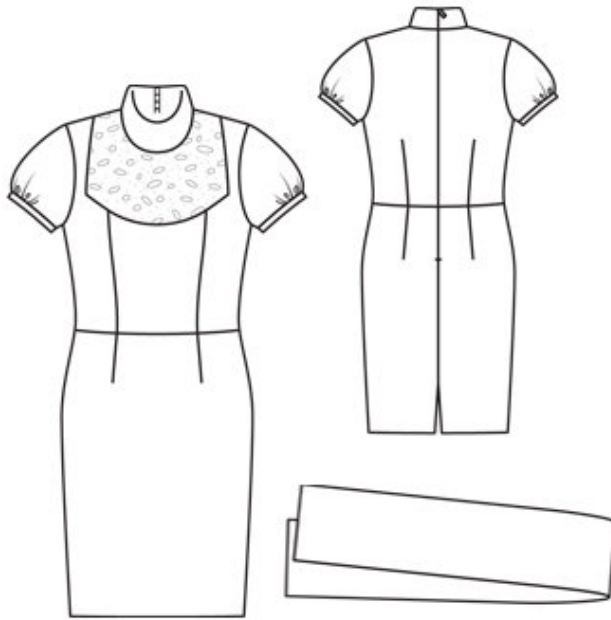
This pattern is printed on 8.5 × 11 sheets of plain paper. Do not scale or center pages before printing. Wait until all sheets are printed out before beginning to tape them together. **Do not cut out pattern pieces yet**— Arrange the sheets on a large, hard, flat surface so that they fit together, matching up like numbers and letters (i.e. 6A to 6A). To tape pattern together, fold under the margin of one piece (6A) and tape right against the line of it's matching number/letter (6A).

burda style magazine pattern do not have seam allowance included.

Seam and hem allowances to be added: Seams and edges 1.5 cm (5/8 in).

see example here: <http://www.burdastyle.com/projects/072011-jumpsuit/instructions/1>

Step 2 — Cutting out



Tulle lace:

1 front insert, on a fold 1x

Crpe satin:

2 centre front, on a fold 1x

3 side front 2x

4 back 2x

5 front skirt panel, on a fold 1x

6 back skirt panel 2x

7 sleeve 2x

8 standing collar, on a fold 2x

a) 2 sleeve bands, 29 — 30 — 31 — 32 — 33 cm (11 1/2 — 12 — 12 1/4 — 12 3/4 — 13 ins) long, 2 cm (3/4 in) wide, finished width 1 cm (3/8 in),

b) scarf, 130 cm (51 ins) long, 30 cm (12 ins) wide, finished width 15 cm (6 ins).

Use the matte side of the fabric as the right fabric side.

Interfacing: See pattern layout. Iron Vilene Bias Tape/stay tape to shoulder seam edges of side fronts, to insert joining edges of front, and to front and back armhole edges.

Step 3 — Darts

Stitch side fronts to centre front. Press seam allowances open. Stitch darts in back pieces. Press darts toward centre back.

Step 4 — Seam allowances

Stitch insert to front. Clip seam allowance of front along curves, several times. Press seam allowances onto front.

Step 5 — Shoulder seams

Stitch shoulder seams. Press seam allowances onto back. Stitch side seams of dress bodice. Press seam allowances open.

Step 6 — Collar

Stitch one collar piece to neck edge. Trim the seam allowances and press onto collar.

Step 7 — Skirt darts

Stitch the darts in the skirt pieces and press toward centre. Stitch side seams of the skirt. Stith skirt to dress bodice. Press seam allowances up.

Step 8 — Zip

Sew invisible zip to the back opening edges beginning at the upper edge of the collar. Stitch centre back seam from vent to zip.

Step 9 — Collar

Lay the second collar piece right sides together with the attached collar piece and pin. At edges of the zip opening, turn the inside collar piece back, approx. 5 mm (3/16 in) before the marked seam line, and pin to upper edge. At the opening edges of the dress, turn the allowances to outside and pin in place, over inside collar piece. Stitch along upper edge of collar. Turn inside collar piece and allowances at opening edges to inside. Sew ends of collar to zip tapes. Turn in inside collar piece and sew to joining seam.

Step 10 — Sleeve bands

Gather the lower edges of the sleeves between the asterisks. Stitch the sleeve seams. Sleeve bands: Stitch ends of each sleeve band together. Stitch sleeve bands to lower sleeve edges. Press seam allowances onto sleeve bands. Fold sleeve bands half to inside. Turn inside edges under and sew to joining seam.

Step 11 — Sleeve caps

Set in sleeves, easing sleeve caps.

Step 12 — Hem and vent

Press hem and vent allowances to inside and sew in place by hand.

Step 13 — Scarf

Fold the scarf lengthwise, right side facing in. Stitch the edges together, leaving a section of seam open for turning. Turn scarf right side out. Sew seam opening closed by hand.

BurdaStyle

10/2011 Little black dress with lace inset