

09/2011 Embroidered Bodice Plus Size

By: burda style magazine

<http://www.burdastyle.com/projects/092011-embroidered-bodice-pl>



Embroidered bodice plus size sewing pattern. burda style magazine patterns FAQ

Materials

Embroidered and plain doupion silk

Step 1 — Preparation



Paper cut for ANSI A (German DIN A4) prints:

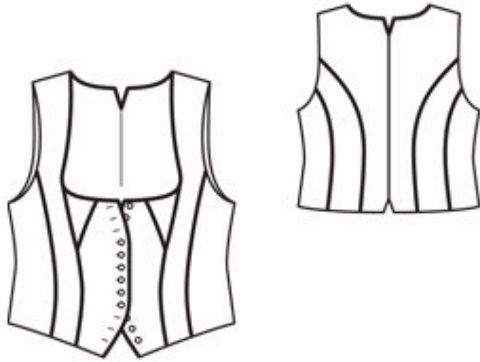
This pattern is printed on 8.5 × 11 sheets of plain paper. Do not scale or center pages before printing. Wait until all sheets are printed out before beginning to tape them together. **Do not cut out pattern pieces yet**— Arrange the sheets on a large, hard, flat surface so that they fit together, matching up like numbers and letters (i.e. 6A to 6A). To tape pattern together, fold under the margin of one piece (6A) and tape right against the line of it's matching number/letter (6A).

burda style magazine pattern do not have seam allowance included.

Seam and hem allowances to be added: Seams and edges 1.5 cm (5/8 in).

see example here: <http://www.burdastyle.com/projects/072011-jumpsuit/instructions/1>

Step 2 — Cutting out



Embroidered doupion silk:

- 1 centre front 2x
- 2 upper centre front 2x
- 3 front middle piece 2x
- 4 side front 2x
- 5 centre back 2x
- 6 back middle piece 2x
- 7 side back 2x

Plain doupion silk (lining):

pieces 1 to 7,

a) bias strip for piping, a total of 500 — 510 — 510 — 520 — 520 cm (197 — 201 — 201 — 204 3/4 — 204 3/4 ins) long, 4 cm (15/8 ins) wide (incl. allowances).

Interfacing: See pattern layout.

Step 3 — Piping

Piping: Fold bias strip in half lengthwise, wrong side facing in. Lay cord within the fold. Use the zipper foot of your sewing machine to stitch close to piping cord. — On upper centre front pieces, baste the piping along seam line of front section seam (seam number 1) so that piping cord lies on garment piece. Stitch the piping tape to seam allowance, next to seam. Stitch upper centre fronts to centre fronts (seam number 1). Press the seam allowances onto the centre fronts — piping points to the side.

Step 4 — Piping tape

Stitch the piping tape to section seam edges of centre fronts (seam number 2) and of side fronts (seam number 3) as instructed. Stitch the front middle pieces to the centre fronts and stitch the side fronts to the front middle piece. Press the seam allowances onto the middle pieces — front piping points forward and side piping points to the side.

Step 5 — Center back seam

Stitch centre back seam from seam mark to seam mark. Press the seam allowances open.

Step 6 — Back

Stitch the piping tape to the back section seam edge of the back middle pieces as instructed (seam number 4) and to the section seam edges (seam number 5) of the side back pieces. Stitch the back section seams. Press the seam allowances toward the centre — piping points to the side.

Step 7 — Shoulders

Stitch the shoulder seams. Press the seam allowances open.

Step 8 — Neck

Beginning at marked hem line, stitch the piping tape to the front edges, neck edges, and to slanted back edges, as far as the seam mark, clipping the tape up to the piping cord at corners of neck edge and making a small fold in piping cord. Turn in end of each tape, toward the seam allowances.

Step 9 — Lining

Stitch the seams of the lining — except the side seams.

Step 10 — Lining

Pin the lining right sides together with the garment. Stitch along the front hem edges, front edges, and neck edges. Then continue to stitch the slanted back edges, up to beginning of centre seam. Stitch along back hem edges and slanted back edges, up to centre seam. Stitch armhole edges together. Trim seam allowances and clip curves close to stitching. To turn right side out, push fronts to back, through the shoulder tunnels, and pull to outside, through an open side seam. Press the edges. Stitch the side seams on the outer fabric, also stitching a small amount of the lining seam at top and bottom. Reach through an open seam of the lining to pull out the other side seam of the lining. Stitch remainder of open seam and push back in place again. Sew second seam by hand.

Step 11 — Buttonholes

Work buttonholes in right front. The top 3 and bottom 3 buttonholes are for decoration only and are not cut open.

BurdaStyle

09/2011 Embroidered Bodice Plus Size