

09/2011 Bodice

By: burda style magazine

<http://www.burdastyle.com/projects/092011-bodice>



Bodice burda style magazine patterns FAQ

Materials

Twill-weave wool

Step 1 — Preparation



Paper cut for ANSI A (German DIN A4) prints:

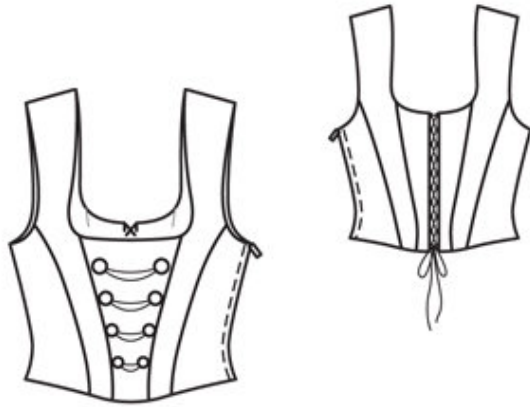
This pattern is printed on 8.5 × 11 sheets of plain paper. Do not scale or center pages before printing. Wait until all sheets are printed out before beginning to tape them together. **Do not cut out pattern pieces yet**— Arrange the sheets on a large, hard, flat surface so that they fit together, matching up like numbers and letters (i.e. 6A to 6A). To tape pattern together, fold under the margin of one piece (6A) and tape right against the line of it's matching number/letter (6A).

burda style magazine pattern do not have seam allowance included.

Seam and hem allowances to be added: Seams and edges 1.5 cm (5/8 in).

see example here: <http://www.burdastyle.com/projects/072011-jumpsuit/instructions/1>

Step 2 — Cutting out



Twill-weave wool /lining:

1 centre front, on a fold 1x

2 front middle piece 2x

3 side front 2x

4 centre back 2x

5 back middle piece 2x

6 side back 2x

Interfacing: See pattern layout.

Step 3 — Middle pieces

Stitch the front middle pieces to the centre front. Stitch the side fronts to the front middle pieces. Press the seam allowances open. Topstitch close to both sides of each seam. Stitch the back middle pieces to the centre backs. Stitch the side backs to the back middle pieces. Topstitch close to both sides of each seam.

Step 4 — Loop

For the loop fastening, cut 20 \hat{A} -pieces of braid, each 4 cm (15/8 ins) long. Form each piece to a loop. Baste loops to both back edges. On each back edge, place one loop below -corner of neck edge and one 7 mm (1/4 in) above hem line, then place 8 loops, evenly spaced, between upper and lower loops. Finished width of each loop = 1.5 cm (5/8 in).

Step 5 — Lining

Stitch section seams of lining.

Step 6 — Lining

Lay the lining units right sides together with the front and back bodice units. Turn hem allowances on back pieces to outside. Stitch the lower edge of the lining right sides together with inside hem edge, approx. 10 cm (4 ins) long, beginning at back edge. Pin hem allowance and lining to the back edges, laying the extra length of the lining down in a small fold and pinning it under the hem allowance. Stitch along back edges and along neck and armhole edges, beginning and ending 2 cm (3/4 in) below each shoulder seam line. Trim the seam allowances. On the front (not on the back), turn the lining to the inside. Push the front shoulder edges through the as-yet- unturned back shoulder edges — right fabric sides of front and back and of lining lie facing. Stitch the shoulder seams of outer fabric and lining. Pull the front and lining which lie inside up and out slightly to press the seams open. This will be easier if you slip the handle of a wooden spoon under the seams. Then stitch remaining open edges closed. Pull front down out of back shoulder edges and back lining will turn itself to the inside. Press edges.

Step 7 — Armhole

At right armhole, turn the lining up. Stitch right side seam of outer fabric and lining as continuous seam. Turn lining down again.

Step 8 — Hem

Press hem allowance to inside and sew in place by hand.

Step 9 — Zip

Press allowances of left side edges to inside. Baste zip under edges so that zip teeth are covered. Turn upper ends of zip tapes under. Topstitch 7 mm (1/4 in) from side edges.

Step 10 — Lining and zip

Turn in lower lining edges and sew to hem allowance. Lay extra length of lining down and press lightly. Turn in lining and sew to zip tapes.

Step 11 — Buttons

Sew buttons with chains to front as marked — largest buttons at the top, smallest buttons at the bottom. Lace cord through the loops, crosswise, from top to bottom.

BurdaStyle

09/2011 Bodice