

5/2010 Shirt Dress

By: burda style magazine

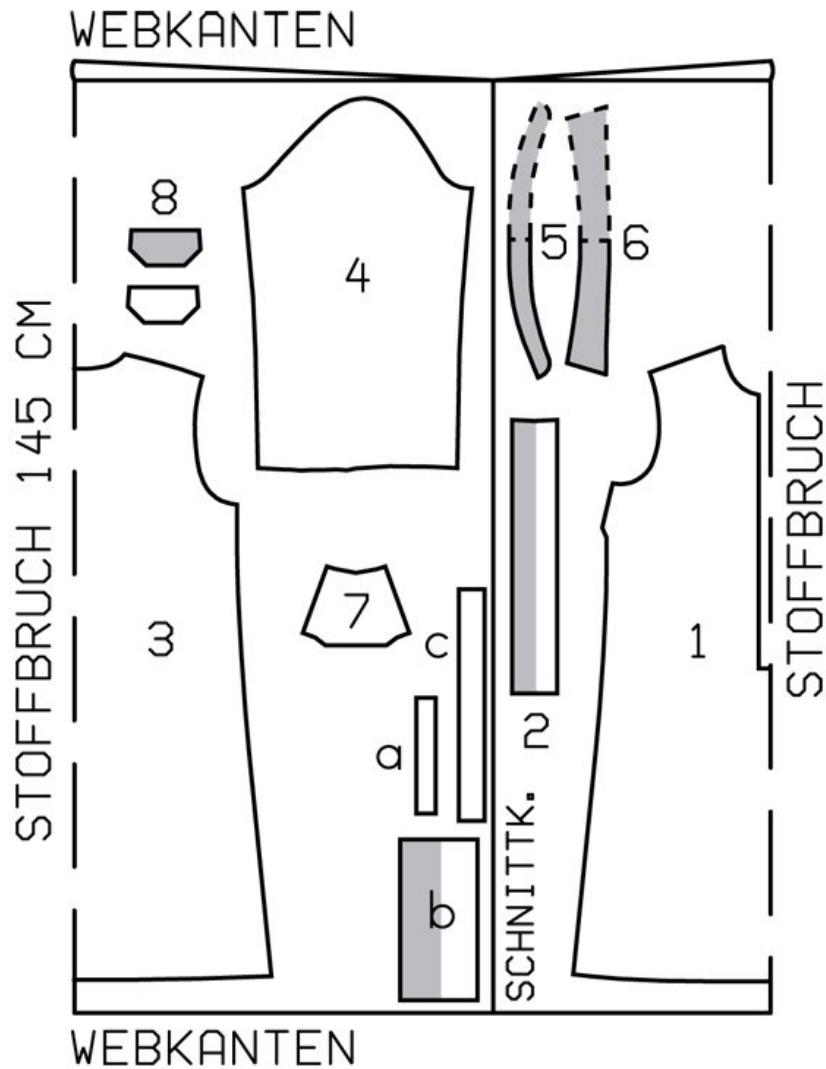
<http://www.burdastyle.com/projects/52010-shirt-dress>

Shirt Dress burda style magazine patterns FAQ

Materials

Striped seersucker

Step 1 — Preparation



111 38-46

Trace the pattern pieces from the pattern sheet. Follow lines and details for style 111.

The buttonholes on piece 2 are marked for size 38. For sizes 40 — 46, mark the top buttonhole the same distance from upper edge as for size 38. The bottom buttonhole is in the same place for all sizes. Space the other buttonholes evenly in between.

Seam and hem allowances:

Seams and edges 1.5 cm (5/8 in), hem 4 cm (15/8 ins).

Step 2 — Cutting Out



1 front, on a fold 1x

2 front band 2x

3 back, on a fold 1x

4 sleeve 2x

5 collar band, on a fold 2x

6 collar, on a fold 2x

7 pocket 2x

8 flap 4x

a) 2 binding strips for sleeve vents, 18 cm (7 ins) long, 3 cm (1 1/4 ins) wide (incl. allowance),

b) 2 cuffs, 25 — 25.5 — 26 — 27 — 27.5 cm (10 — 10 1/8 — 10 1/4 — 10 3/4 — 11 ins) long, 12 cm (4 3/4 ins) wide, finished width 6 cm (2 3/8 ins),

c) 2 belt carriers, 18 cm (7 ins) long, 4 cm (1 5/8 ins) wide (incl. allowance).

Interfacing: See pattern layout. Iron interfacing onto undercollar piece. Iron interfacing to wrong side of front over bottom corners of placket fastening.

Step 3 — Darts

Stitch bust darts. Press darts down.

Step 4 — Placket fastening

Stitch front bands to vertical edges of front. Clip -seam allowances of front into corners. Press seam allowances of band joining seams and of other long edges of bands onto bands. Fold bands in half

lengthwise and press, right side facing out. Baste inside edges of bands in place. Topstitch bands close to joining -seam. Pin right band to left, band matching centre fronts. Stitch bottom ends of bands together to front.

Step 5 — Patch pockets

Fold pleat in arrow direction and baste. Press allowances on upper edges of pockets to inside and stitch. Press allowances on side and lower edges to inside. Edgestitch pockets onto front, at placement lines.

Step 6 — Flaps

Stitch each interfaced flap piece to flap piece with no inter-facing, right sides together, along outer edges. Turn right side out. Topstitch flaps 7 mm (1/4 in) from -seamed edges. Work buttonholes. Stitch flaps in place, 1 cm (3/8 in) -above pockets. Press flaps down and stitch again along joining seams.

Step 7 — Side seams and shoulder seams

Stitch side seams and shoulder seams.

Step 8 — Collar with collar band

Stitch collar pieces right sides together along outer edges. Turn collar right side out and press. Topstitch 7 mm (1/4 in) from edges of collar. Lay collar band pieces right sides together, catching collar in between. -Stitch along front and upper edges of collar band, beginning and ending in front, exactly at seam line on joining edge. Turn collar band right side out. Work from inside to stitch inside collar band piece to neck edge. Turn in outer collar band piece and baste over joining -seam. Top-stitch collar band close to all edges.

Step 9 — Sleeve vents

Slash sleeve vents as marked. Spread cut edges open to a straight line and stitch to one lengthwise edge of binding strip as narrowly as possible. Press binding strip over join-ing seam into vent, then turn in to a width of 7 mm (1/4 in) and sew in place along join-ing seam. Mitre binding on inside, at top of vent. Lay binding on front edges of vents to inside and baste to lower edge.

Step 10 — Sleeves

Stitch sleeve seams. Fold pleats in lower edges of sleeves in arrow direction and baste.

Step 11 — Cuffs

Stitch cuffs to lower edges of -sleeves. Press seam allowances of join-ing seam and of other long edge of cuffs onto cuffs. Fold cuffs lengthwise, right side facing in, and stitch across ends. Turn right side out. Baste inside edges in place. Topstitch cuffs close to joining seam. Topstitch 7 mm (1/4 in) from outer edges of cuffs.

Step 12 — Sleeve Caps

Set in sleeves, easing sleeve caps.

Step 13 — Belt carriers

Fold belt carriers lengthwise, right side facing in. stitch 1 cm (3/8 in) from fold edge. Turn right side out. Pin belt carriers next to side seams as marked, turning ends in. Edgestitch end of belt carriers in place. Also stitch across middle of belt carriers.

Step 14 — Hem

Press hem allowance to inside and sew in place by hand.

BurdaStyle

5/2010 Shirt Dress