

4/2010 Flounce-detail blouse

By: burda style magazine

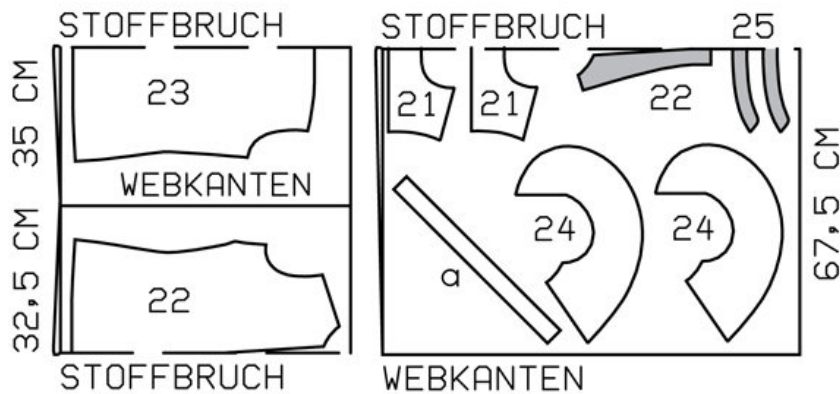
<http://www.burdastyle.com/projects/42010-flounce-detail-blouse>

Flouse-detail blouse burda style magazine patterns FAQ

Materials

Chiffon

Step 1 — Preparation



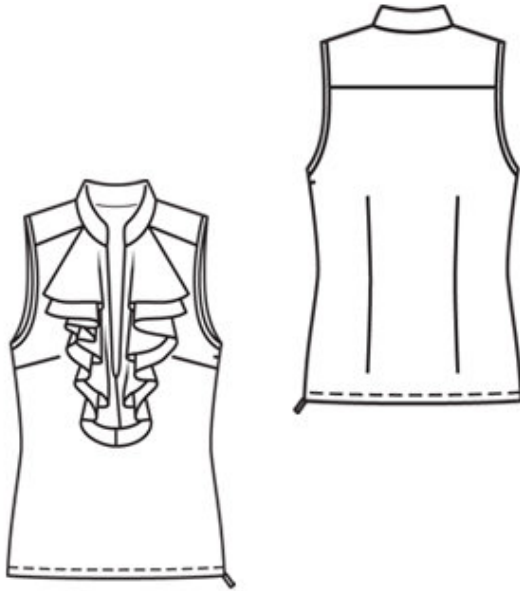
105 36-44

Trace the pattern pieces from the pattern sheet. Trace the front facing from piece 22 as a separate pattern piece.

Seam and hem allowances:

Seams and edges 1.5 cm (5/8 in), hem 2 cm (3/4 in).

Step 2 — Cutting Out



21yoke, on a fold 2x

22front, on a fold 1x

23— 24— front facing, on a fold 1x

23back, on a fold 1x

24flounce 4x

25standing collar, on a fold 2x

a) 2 bias strips for armhole edges, 46 — 48 — 49 — 51 — 52 cm (18 1/8 — 19 — 19 1/4 — 20 1/4 — 20 1/2 ins) long, 3 cm (1 1/4 ins) wide (incl. allowance).

Interfacing: See pattern layout. Iron a piece of interfacing to wrong side of fabric, over bottom of front slit.

Step 3 — Darts

Stitch darts. Press bust darts down. Press back darts toward centre.

Step 4 — Yokes

Pin one yoke to upper edge of back from the outside and pin the other yoke to upper edge, from the inside. Stitch yokes to edge and press up. Stitch outer yoke to upper edges of front. Press seam allowances onto yoke. Turn in inside yoke and sew to joining seams. Baste open edges of yokes together.

Step 5 — Flounce

Lay pairs of flounce pieces right sides together. Stitch centre front -seam from marking. Clip seam allowances at each marking. Trim seam allowances to a width of 7 mm (1/4 in), neaten together and press to one side. Trim outer edge of flounce -piece which lies on top by 1.5 cm (5/8 in), then measure and mark the 1.5 cm (5/8 in) wide allowance.

Step 6 — Neaten outer edges of flounces with closely spaced zigzag stitching

Press allowance to wrong side of fabric. Work from right side to stitch along fold edge at a short, closely spaced zigzag setting. Carefully trim allowance close to stitching.

Step 7 — Standing collar and front slit

Lay collar pieces right sides together. Stitch together on front and upper edges. Trim seam allowances. Turn collar right side out and press. Baste edges of collar together to neck edge. Trim and clip slit edges of front facing as instructed for front. Stitch facing right sides together with neck and slit edges, spreading edges of slit apart and catching collar and flounces. Stitch collar to neck edge from end of facing. Trim seam allowances. At back neck edge, neaten edges of allowances together. Turn facing to inside. Press seam allowances down. Sew facing to yoke joining seams.

Step 8 — Bind edges of armholes

Trim away seam allowance on edges of armholes. Fold bias strips in half lengthwise and press, right side facing out. Unfold strips out flat again. Now turn each lengthwise edge in to the pressed crease and press again. Unfold pressed bias strips and pin to edges of armholes from the inside. Stitch bias strips in place, along the fold. Fold bias strips overarmhole edges and baste in place. Work from right side of garment to edgestitch bias strips in place.

Step 9 — Right side seam

Stitch right side seam. Trim seam allowances to 7 mm (1/4 in) wide, neaten together, and press onto back.

Step 10 — Hem

Lay hem allowance to inside, turn half in, press, and stitch.

Step 11 — Zipper

Sew invisible zip to left opening edges. The zip should open from bottom to top. Stitch left side seam up to zip. Sew top ends of seam allowances in place by hand. Turn in bottom ends of zip tapes and sew in place.

BurdaStyle

4/2010 Flounce-detail blouse