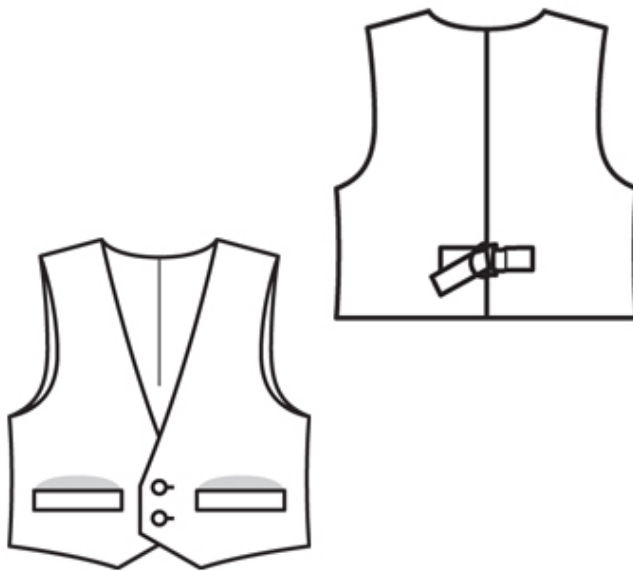


5/2010 Boys' vest

By: burda style magazine

<http://www.burdastyle.com/projects/52010-boys-vest>



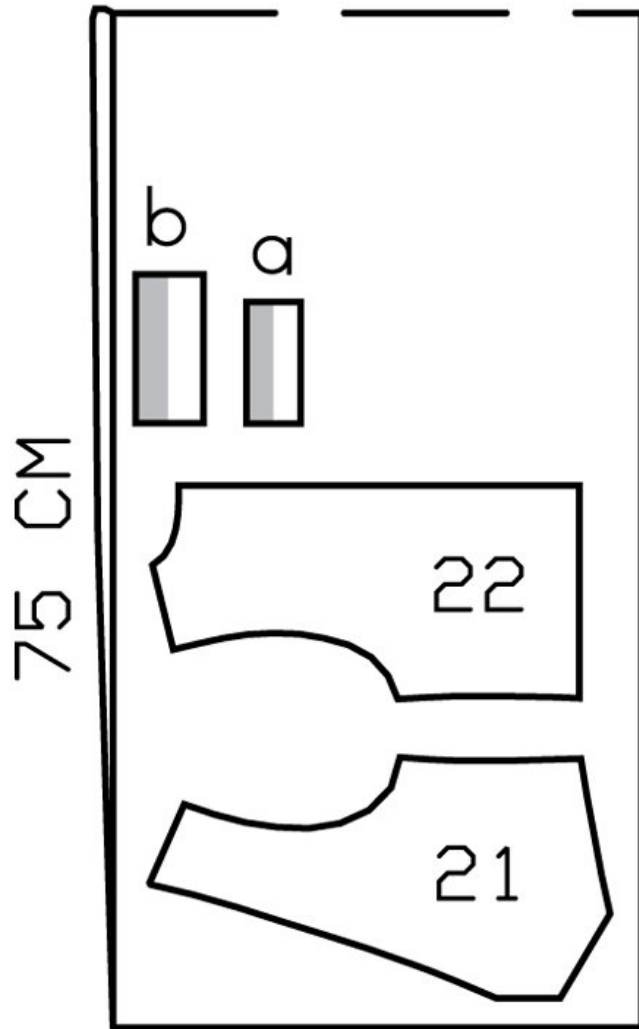
Boys' vest burda style magazine patterns FAQ

Materials

Glencheck linen

Step 1 — Preparation

STOFFBRUCH



WEBKANTEN

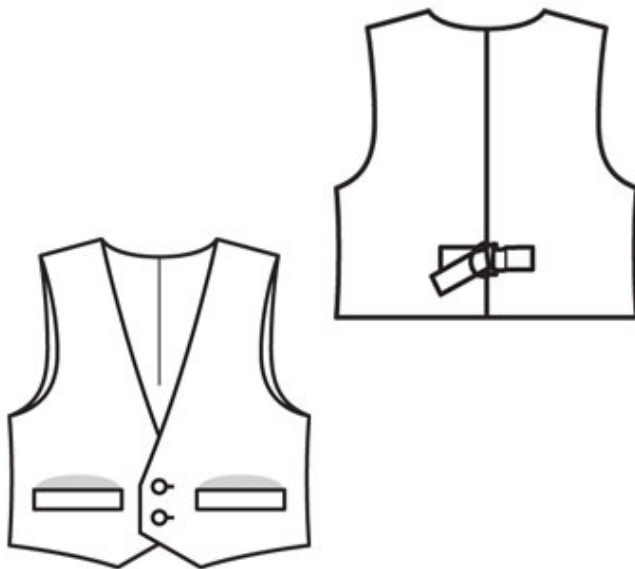
143 104-128

Trace the pattern pieces from the pattern sheet.

Seam and hem allowances:

Seams and edges 1.5 cm (5/8 in).

Step 2 — Cutting Out



Linen:

21 front 2x

22 back 2x

a) 2 welts, each 9 cm (3 1/2 ins) long, 5 cm (2 ins) wide, finished width 2.5 cm (1 in),

b) right back half-belt, 8 cm (3 1/4 ins) long, left back half-belt 11 cm (4 3/8 ins) long, each 5 cm (2 ins) wide, finished width 2.5 cm (1 in).

Batiste (lining): pieces 21 and 22.

Interfacing: See pattern layout.

Step 3 — Welts

Fold welts lengthwise with right side facing in. Stitch across ends. Turn welts right side out. Stitch welts right sides together with fronts, along marked joining line. Press welts up. Edgestitch narrow ends of welts in place and stitch again 5 mm (3/16 in) from ends.

Step 4 — Centre Back Seam and Shoulder Seams

Stitch centre back seam and shoulder seams. Press seam allowances open.

Step 5 — Half-belt

Fold back half-belt lengthwise, right side facing in. Stitch edges together, leaving one end of left half-belt open and both ends of right half-belt open. Turn half-belt pieces right side out. Press edges. Fold one end of right half-belt over 2 D-rings, 3 cm (1 1/4 ins) wide, turn in and stitch. Stitch open ends of half-belt to back of waistcoat as marked — half-belt -pieces point sideways. Trim allowances of half-belt joining seams to 5 mm (3/16 in) wide. Lay half-belts toward centre and topstitch 7 mm (1/4 in) from joining seams.

Step 6 — Centre Back Seam and Shoulder Seams of lining

Stitch centre back seam and shoulder seams of lining.

Step 7 — Face the waistcoat

Pin lining right sides together with waistcoat of -outer fabric. -Stitch along front and back hem edges, front edges, neck edge, and armhole edges. To turn waistcoat right side out, push fronts back through tunnels at shoulders and pull out through an open side -seam. Press edges. Stitch side seams of outer fabric, also stitching seam slightly at top and bottom of lining. Reach through an open seam of -lining to pull out other side seam of lining. Stitch up remainder of open seam and push back in. Sew other open seam closed by hand. Topstitch waistcoat close to all edges.

BurdaStyle

5/2010 Boys' vest