

5/2010 Lace Dress with collar detail

By: burda style magazine

<http://www.burdastyle.com/projects/52010-lace-dress-with-collar-d>

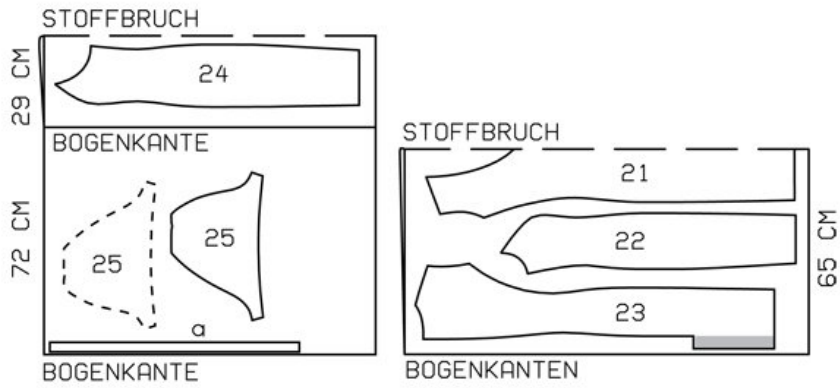


Lace dress with collar detail burda style magazine patterns FAQ

Materials

Guipure lace with two scalloped edges

Step 1 — Preparation



141 46-54

Trace the pattern pieces from the pattern sheet. Lengthen pieces 21 to 24 as indicated. The pleat arrows on piece 25 are marked for size 46. Mark the pleat -arrows for the other sizes according to the size lines.

Seam and hem allowances:

Seams and edges 1.5 cm (5/8 in), hem 4 cm (15/8 ins), sleeve hems 3 cm (11/4 ins). Flare sleeve hem allowances.

Step 2 — Cutting Out



Lace fabric:

21centre front, on a fold 1x

22side front 2x

23centre back 2x

24side back 2x

25sleeve 2x

a) scalloped edge for neck edge, 90 cm (35 1/2 ins) long, about 3 cm (1 1/4 ins) wide (width of motif).

Lining: pieces 21 to 24.

Interfacing: See pattern layout. Iron Vilene Bias Tape onto neck edge of -lining pieces.

Step 3 — Zipper

Sew invisible zip to edges of centre back pieces. Stitch centre back seam from vent to zip. Clip seam allowance of left centre back piece diagonally into corner at top of vent. Press seam allowances open. Press wide allowances on edges of opening onto right back piece. Press allowance on lengthwise edge of underlap to inside and stitch. Work from inside to stitch across facing and underlap at top of vent.

Step 4 — Front and back section seams

Stitch front and back section seams. Trim seam allowances to 5 mm (3/16 in) wide, neaten together and press toward centre. Stitch side seams and shoulder seams. Press seams open.

Step 5 — Face neck edge with lining

Stitch seams of lining. Pin lining right sides together with neck edge of dress. At edge of zip opening, turn lining back about 5 mm (3/16 in) before edge, and pin to neck edge. Lay allowances of dress at edges of opening outward and pin to neck edge, over lining. Stitch along neck edge. Trim seam allowances and clip into point of neck edge. Turn lining and allowances at opening edges to inside. Sew lining to zip tapes. Baste lining to armhole edges.

Step 6 — Sleeve caps, sleeve seams and hem allowances

Fold pleat in sleeve caps in arrow direction and baste. Stitch sleeve seams. Press sleeve hem allowances to inside and sew in place by hand.

Step 7 — Sleeve Caps

Set in sleeves, easing sleeve caps.

Step 8 — Sewing facing to hem allowance

At the hem edge, lay facing on right edge of vent forward again. Press hem allowance to inside and sew in place by hand. Sew facing to hem allowance.

Step 9 — Lining

Hem lining so that it is about 2 cm (3/4 in) shorter than dress. Pin lining in place around vent. Turn in edges of lining, pin to hemmed vertical edge of underlap, and sew in place by hand. Trim other edge of lining to 2 cm (3/4 in) before inside edge of vent facing, trim away across top of vent, and clip about 1 cm (3/8 in) diagonally into lining at top of vent. Turn in lining and sew to inside edge of vent facing and across top of vent.

BurdaStyle

5/2010 Lace Dress with collar detail