

10/2011 Blouse with jabot

By: burda style magazine

<http://www.burdastyle.com/projects/102011-blouse-with-jabot>



Blouse with jabot burda style magazine patterns FAQ

Materials

Chiffon

Step 1 — Preparation



Paper cut for ANSI A (German DIN A4) prints:

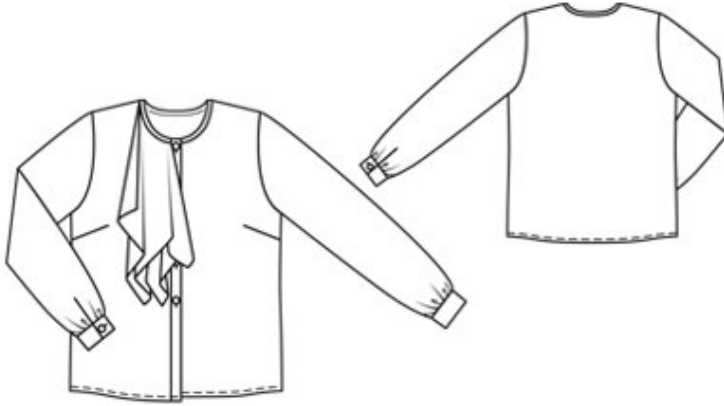
This pattern is printed on 8.5 × 11 sheets of plain paper. Do not scale or center pages before printing. Wait until all sheets are printed out before beginning to tape them together. **Do not cut out pattern pieces yet**— Arrange the sheets on a large, hard, flat surface so that they fit together, matching up like numbers and letters (i.e. 6A to 6A). To tape pattern together, fold under the margin of one piece (6A) and tape right against the line of it's matching number/letter (6A).

burda style magazine pattern do not have seam allowance included.

Seam and hem allowances to be added: Seams and edges 1.5 cm (5/8 in).

see example here: <http://www.burdastyle.com/projects/072011-jumpsuit/instructions/1>

Step 2 — Cutting out



1 front 4x

2 front band, on a fold 2x

3 back, on a fold 2x

4 sleeve 2x

5 jabot 1x

a) 2 bias binding strips for sleeve vents, 19 cm (7 1/2 ins) long, 4.5 cm (1 7/8 ins) wide (incl. allowances),

b) 2 cuffs, 23 — 23.5 — 24 — 24.5 — 25 cm (9 1/8 — 9 1/4 — 9 1/2 — 9 3/4 -10 ins) long, 8 cm (3 1/4 ins) wide, finished width 4 cm (1 5/8 ins),

c) bias binding strip for neck edge, 43 — 44 — 45 — 46 — 47 cm (17 — 17 1/4 — 17 3/4 -18 1/8 — 18 1/2 ins) long, 4.5 cm (1 7/8 ins) wide (incl. allowances).

Interfacing: See pattern layout.

Step 3 — Bust darts

Stitch the bust darts. Press the darts down. Stitch the side seams. Neaten the seam allowances together and press onto the back. Turn under raw edge of hem allowance narrowly, turn hem allowance to inside, and stitch hem in place.

Step 4 — Baste pieces together

Lay each outer piece on matching inner piece, with wrong side facing right side. Baste pieces together on front edges, shoulder seam edges, neck edge, and armhole. Baste next to seam allowance on neck edge. Treat these pieces as one layer of fabric from now on.

Step 5 — Shoulders

Stitch the shoulder seams, beginning and ending exactly at marked neck edge. Neaten seam allowances together and press toward back. Trim away allowance at neck edge.

Step 6 — Jabot

Cut jabot on marked line. Lay jabot on front, with wrong side facing right side. Baste one cut edge to neck edge, from shoulder seam to front corner, and baste the other cut edge to front edge, from front corner to marking, basting the cut edges in place, approx. 5 mm (3/16 in) from edge, and making a small fold at the corner.

Step 7 — Binding strip

Fold the binding strip in half lengthwise and press, right fabric side facing out. Pin the folded binding strip to neck edge and stitch 6 mm (1/4 in) from edge. Fold the binding over the edge to the inside and baste. Stitch from the right side, along line of joining seam.

Step 8 — Bands

Fold the front bands on the fabric fold line, wrong side facing in, and press. Baste the edges together and treat as one layer of fabric from now on. Stitch the front bands to the fronts. Press bands forward over the joining seams. Fold bands on fold line, right side facing in. Stitch across top and bottom ends. Turn bands right side out baste the inside edges in place. Work from the outside of blouse to stitch along line of band joining seams.

Step 9 — Sleeve vents

Slash sleeve vents as marked. Fold the binding strips in half lengthwise and press, right side facing out. Spread cut edges open to a straight line and stitch to long edges of folded binding, 6 mm (1/4 in) from edge, tapering stitching at end of vent. Press binding over joining seam into vent, then fold to 6 mm (1/4 in) wide, and baste fold edge over joining seam on inside. Work from the right side to stitch along line of seam. Mitre binding on the inside, at top of vent. At front vent edges, turn binding to inside and baste to lower edge.

Step 10 — Sleeves

Stitch the sleeve seams. Neaten the seam allowances together and press to one side. Gather lower edges of sleeves.

Step 11 — Cuffs

Stitch cuffs to lower sleeve edges. Press the seam allowances of the joining seam and of the other long edge of each cuff onto the cuff. Fold the cuffs lengthwise, right side facing in, and stitch across ends. Turn right side out. Baste inside edges in place. Topstitch the cuffs close to the joining seams. Work one buttonhole in front end of each cuff.

Step 12 — Sleeve caps

Set in sleeves, easing sleeve caps.

BurdaStyle

10/2011 Blouse with jabot