

# Panel Dress 05/2012

By: burda style magazine

<http://www.burdastyle.com/projects/panel-dress-052012>

---



Panel dress sewing pattern. Try your hand at some curved seams with this gorgeous tunic dress with a curved front panel.

## Materials

Linen, fabric width: 150 cm (59 ins) length: Size 34, 36: 1.10 m (1 1/4 yds) Size 38 – 44: 1.15 m (1 3/8 yds) of yellow and Size 34, 36: 1.20 m (1 3/8 yds) Size 38 – 44: 1.25 m (1 1/2 yds) of beige. Vilene/Pellon G 785. Bias tape, 4 cm (1 5/8 ins) wide: 1.00 m long. 1 invisible zip, 40 cm (16 ins) long, and special presser foot.

---

## Step 1 — Preparations



Paper cut for ANSI A (German DIN A4) prints:

This pattern is printed on 8.5 × 11 sheets of plain paper. Do not scale or center pages before printing. Wait until all sheets are printed out before beginning to tape them together. **Do not cut out pattern pieces yet**— Arrange the sheets on a large, hard, flat surface so that they fit together, matching up like numbers and letters (i.e. 6A to 6A). To tape pattern together, fold under the margin of one piece (6A) and tape right against the line of it's matching number/letter (6A).

Trace the pattern pieces from the pattern sheet following the lines and markings for the correct size and style (107C). (This pattern also includes lines and pieces for style 107A and 107B, shorter tunic top versions).

Lengthen piece 4 as indicated. Trace the pocket piece from piece 2 as a separate pattern piece, it is the same for all sizes.

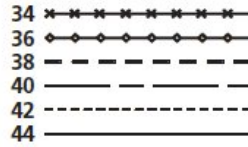
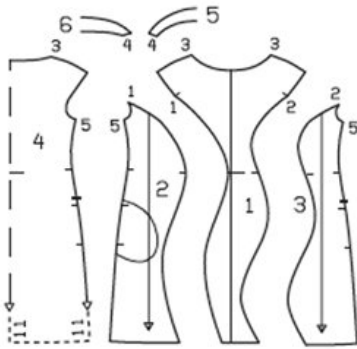
**burda style magazine pattern do not have seam allowance included.**

Seam and hem allowances to be added: Seams and edges 1.5 cm (5/8 in), curved seams 1 cm (3/8 in), hem 4 cm (1 5/8 ins).

---

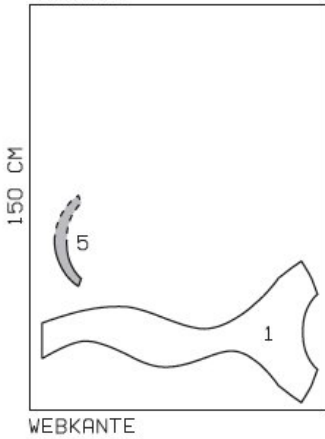
## Step 2 — Cutting out

Pattern pieces 1 to 6



Yellow fabric

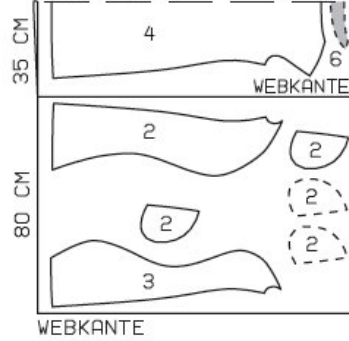
WEBKANTE



Fabric width 150 cm,

Beige fabric

STOFFBRUCH



webbkanten = selvage  
stoffbruch = fabric fold

Yellow fabric:

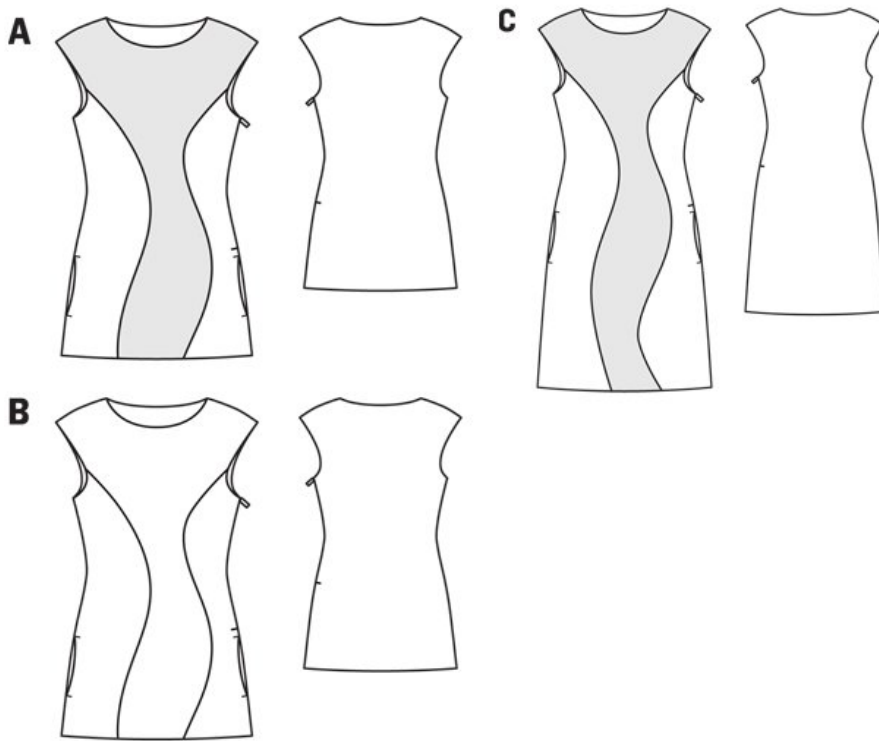
- 1 centre front 1x
- 5 front neck facing, on a fold 1x

Beige fabric:

- 2 right side front 1x
- pocket piece 4x
- 3 left side front 1x
- 4 back, on a fold 1x
- 6 back neck facing, on a fold 1x

Interfacing: Iron to wrong side of facing pieces.

### Step 3 — Sewing



Stitch side fronts to centre front. Press seam allowances toward centre front.

Stitch shoulder seams on tunic and on facing, beginning and ending stitching exactly on marked neck edge. Press seam allowances open.

Stitch facing right sides together with neck edge. Trim seam allowances. Turn facing up and stitch to seam allowances, close to seam. Turn facing to inside and sew to shoulder seams.

Armholes: Fold bias tape length wise and press. Work from right side to pin folded bias tape to each armhole edge so that fold edge of tape lies on garment piece, 1 cm (3/8 in) past seam line. Stitch. Trim seam allowances. Turn bias tape over seam allowances into armhole and stitch to seam allowances, close to seam. Turn bias tape to inside and press edges.

Stitch right side seam, at armhole turning bias tape up again. Do not stitch across pocket openings, between seam marks. Turn bias tape to inside again and sew in place by hand.

At left armhole, turn bias tape up again. Sew invisible zip to left slit edges. Stitch left side seam below zip, not stitching across pocket opening. Turn bias tape and upper ends of zip tapes to inside. Sew zip tapes in place by hand.

Inseam pockets: Work from inside to stitch pocket pieces to seam allowances of pocket opening edges, right sides together. Stitch pocket pieces in place, close to side seam and along seam line on pocket opening edges. Press pocket pieces forward and stitch together. Stitch thread bars, approx. 1 cm (3/8 in) long, across pocket opening ends.

Press hem allowance to inside and sew in place by hand.

**BurdaStyle**

Panel Dress 05/2012