

5/2010 Tiered Maxi Dress

By: burda style magazine

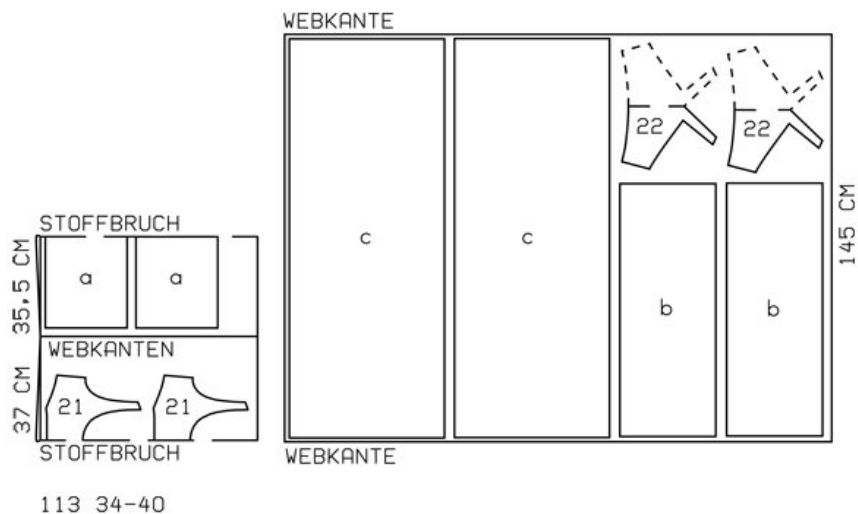
<http://www.burdastyle.com/projects/52010-tiered-maxi-dress>

Tiered maxi dress burda style magazine patterns FAQ

Materials

Poplin

Step 1 — Preparation



Trace the pattern pieces from the pattern sheet.

Seam and hem allowances:

Seams and edges 1.5 cm (5/8 in).

Step 2 — Cutting Out



21 front, on a fold 2x

22 back, on a fold 2x

- a) 2 upper skirt tiers, 65 cm (25³/₄ ins) wide, 29 cm (11¹/₂ ins) long,
- b) 2 middle skirt tiers, 90 cm (35¹/₂ ins) wide, 34 cm (13¹/₂ ins) long,
- c) 2 lower skirt tiers, 142 cm (56 ins) wide, 55 cm (21³/₄ ins) long.

Step 3 — Darts

Stitch front darts. Trim dart allowances to a width of 1 cm (3/8 in) and press open, pressing points of darts flat.

Step 4 — Neck and armhole edges and shoulder seams

Press allowances on shoulder seam edges of one front and back piece (inside pieces) to wrong side of fabric. Pin inside front and back pieces right sides together with respective outer pieces. Stitch along edges of neck and armholes. Trim seam allowances. Clip curves and clip into corners. Turn front and back pieces right side out. Press seamed edges. Stitch shoulder-seams of outer pieces, not catching inside pieces. Press seam allowances open. Slip allowances under inside pieces. Sew shoulder edges of inside pieces

Step 5 — Right and Left Side Seams

Stitch right side seam on outer and inner pieces as continuous seam. Baste left side seam edges and lower front and back edges together without turning in.

Step 6 — Upper skirt tier

Stitch right side seam of upper skirt tier. Press seam allowances open. On left side edges, measure and mark 25 cm (10 ins) down, for zip. Gather upper edge of upper skirt tier and stitch to lower edge of front and back pieces. Press seam allowances up.

Step 7 — Zipper

Sew invisible zip to left side edges as far as marking. Stitch left side -seam from lower edge to zip. Turn in top ends of zip tapes and sew in place.

Step 8 — Middle and lower skirt tiers

Stitch side seams of middle and lower skirt tiers. Trim allowance on lower edge of lower skirt tier to 7 mm (1/4 in) wide and neaten. Press allowance to inside and stitch. Gather upper edges of skirt tiers. Stitch middle tier to lower edge of upper tier and stitch lower tier to lower edges of middle tier. Press seam allowances up.

BurdaStyle

5/2010 Tiered Maxi Dress