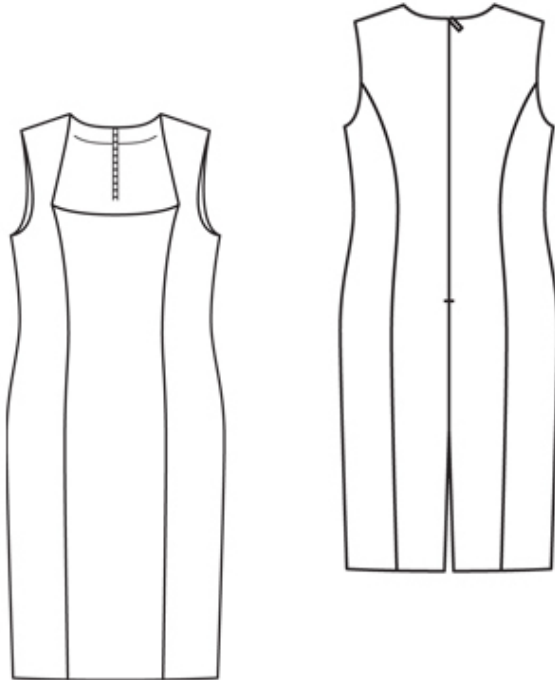


# 5/2010 Shift Dress

By: burda style magazine

<http://www.burdastyle.com/projects/52010-shift-dress>

---



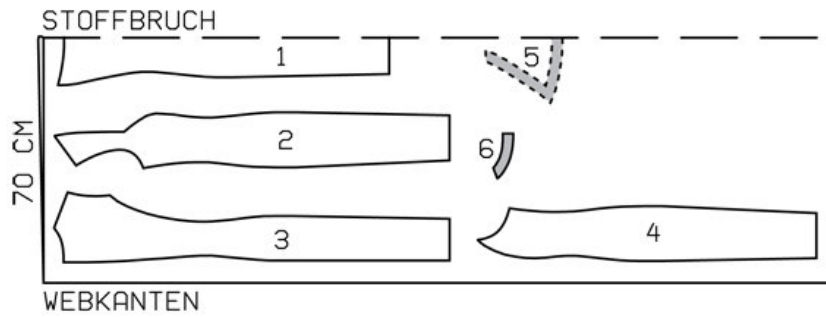
Shift Dress burda style magazine patterns FAQ

## Materials

Crpe

---

## Step 1 — Preparation



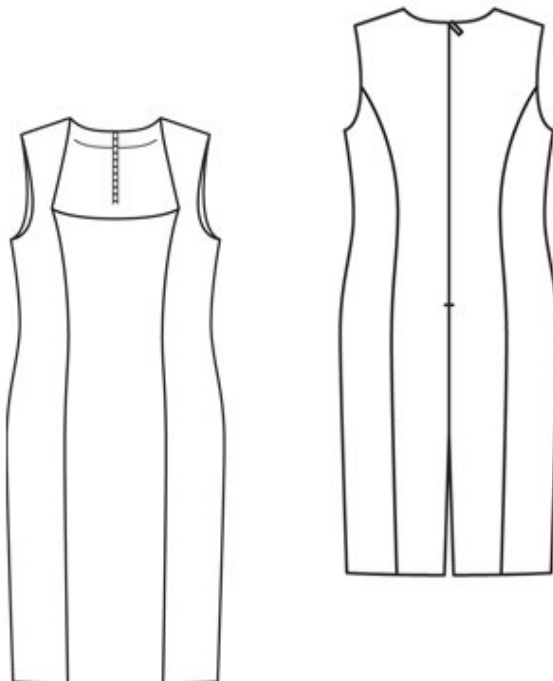
140 44-52

Trace the pattern pieces from the pattern sheet. Lengthen pieces 2, 3 and 4 as indicated.

Seam and hem allowances:

Seams and edges 1.5 cm (5/8 in), back opening edges 3 cm (1 1/4 ins), hem 4 cm (1 5/8 ins).

## Step 2 — Cutting Out



Crpe:

1 centre front, on a fold 1x

2 side front 2x

3 centre back 2x

4side back 2x

5front neck facing, on a fold 1x

6back neck facing 2x

Lining: pieces 1 to 4.

Interfacing: Iron interfacing onto -facing pieces. Iron -Vilene Bias Tape onto edges of arm-holes.

---

### **Step 3 — Section seams**

Stitch section seams on front, beginning at upper edges exactly at marking. Stitch back section seams. Press seam allowances open.

---

### **Step 4 — Zipper**

Sew invisible zip to back opening edges.. Stitch centre back seam from vent mark to zip. Press seam allowances open and press allowances on edges of opening to inside.

---

### **Step 5 — Section seams and lining**

Stitch front and back section seams and centre back seam of lining. Begin stitching front seams at upper edge, exactly at marking on neck edge. Baste facings to neck edges of front and back lining, with wrong side facing right side and stitch bottom edges of facing in place with zigzag stitch. Important: Do not catch allowances of front lining section seams when basting and stitching the facings in place.

---

### **Step 6 — Neck edges and shoulder seams**

Pin lining (with facing) right sides together with front and back pieces. At zip opening, Turn back lining edges back, about 5 mm (3/16 in) before marked seam line, and pin to neck edge. Lay allowances of dress at opening outward and pin in place, over lining. Stitch along edges of neck and armholes, beginning and ending 2 cm (3/4 in) below each shoulder seam line and interrupting stitching at each front section seam. Do not catch section seam allowances. Trim seam allowances and clip curves. Clip seam allowance of facing into corners. Turn lining and allowances at back opening edges to inside. Stitch shoulder seam edges of front and back right sides together. Reach between lining and back to pull out shoulder edges. Stitch shoulder seams of lining. Press seam allowances open. This will be easier if you slip the handle of a wooden spoon under the seams. Pull front out at shoulders, slightly more, and stitch remaining open edges of neck and armholes closed. Push shoulders in place again. Press edges.

---

### **Step 7 — Lining**

Lay lining up. Stitch side seams of dress and lining as continuous seams. Lay lining down again. Sew lining to zip tapes.

---

### **Step 8 — Allowances and hem slits**

Open allowances at hem slits. Press hem allowance to inside and sew in place by hand. Lay allowances at slits to inside again and sew to the hem.

---

5/2010 Shift Dress