

3/2011 Wedding Gown with Full Skirt

By: burda style magazine

<http://www.burdastyle.com/projects/32011-wedding-gown-with-full->



Wedding Gown with Full Skirt burda style magazine patterns FAQ

Materials

Duchesse

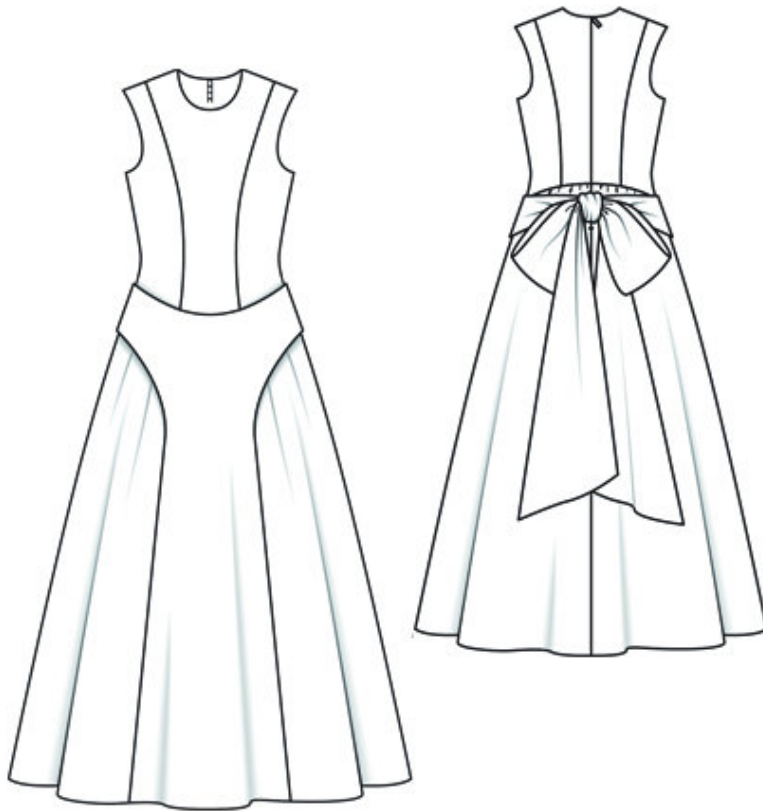
Step 1 — Preparation

Trace the pattern pieces from the pattern sheet. Lengthen pieces 5, 8, 9, and 10 as indicated.

Seam and hem allowances:

Seams and edges 1.5 cm (5/8 in), hem 4 cm (15/8 ins), lining 1.5 cm (5/8 in).

Step 2 — Cutting Out



Duchesse:

â— 1centre front, on a fold 1x

â— 2side front 2x

â— 3centre back 2x

â— 4side back 2x

â— 5centre front skirt panel

â— with integrated sash, on a fold 1x

â— 6facing, on a fold 1x

â— 7inside centre front skirt panel,

â— on a fold 1x

â— 8side front skirt panel 2x

â— 9back skirt panel 2x

10sash, on a fold 2x

Lining: piece 5 to lining line and -pieces 1 to 4, 8, and 9.

Step 3 — Neck and armhole edges, shoulder seams

Pin lining pieces right sides together with front and back pieces. Stitch along neck and armhole edges, beginning and ending stitching 2 cm (3/4 in) below each shoulder seam line. Trim seam allowances. Clip curves close to stitching. Turn lining of back pieces (not front) to inside. Push back shoulder edges between the as-yet-unturned front shoulder edges — right fabric sides of front and back and of lining lie together. Stitch shoulder seams of outer fabric and -lining. Pull the back piece (lying inside) and the lining up and out slightly and press seam allowances open. This will be easier if you slip the handle of a wooden spoon under the seams. Then stitch remaining open edges together. Pull back pieces down out of front shoulder edges and the front lining will be turned to the inside. At neck and armhole edges, stitch lining to seam allowances, close to seam, as far as possible. Press edges.

Step 4 — Lay bodice front and back right sides together and turn lining up

Lay bodice front and back right sides together and turn lining up. Stitch side seams of outer fabric and lining as continuous seams. Turn -lining down again.

Step 5 — Sash

Fold each sash lengthwise, right side facing in. Stitch along long edges and slanted end. Trim seam allowances. Turn sashes right side out and press. Gather straight ends of sashes to 10 cm (4 ins) wide. Baste sashes to integrated sashes on centre front skirt panel (seam number 10).

Step 6 — Skirt piece

Stitch facing right sides together with centre front skirt panel and integrated sashes. Begin and end stitching at seam mark on section seam edge, leave upper edge of facing open between seam marks, and catch basted sashes in seam. Trim seam allowances and clip at seam marks. Turn facing to inside. Press edges. Lay inside centre front skirt panel on facing side of centre front skirt panel, right fabric side down. Stitch lower edges of facing and inside skirt panel piece together. Stitch each side front skirt panel to inside centre front skirt panel, from upper edge (seam number 7), then stitch to centre front skirt panel, below marking. Press seam allowances open. Stitch side seams.

Step 7 — Gather upper edge of side front skirt panels and back skirt panels

Gather upper edge of side front skirt panels and back skirt panels. Baste open upper edge of centre front skirt panel to upper edge of inside centre front skirt panel. Stitch skirt to bodice, not catching lining. Press seam allowances up.

Step 8 — Zipper

Sew invisible zip to back opening edges. Do not catch lining. Stitch centre back seam from lower edge to zip.

Step 9 — Stitch seams of skirt lining

Stitch seams of skirt lining, leaving slit for zip open. Gather upper edge of skirt lining, beginning at front section seams. Leave centre front piece ungathered. Place skirt lining inside dress, with wrong sides facing, and stitch to seam allowances of skirt joining seam, stitching as far as possible at slit. Turn in edges of skirt lining and sew to zip tapes. Turn in edges of bodice lining and sew to zip tapes and to skirt joining seam.

Step 10 — Hem

Press hem allowance to inside. Sew hem in place by hand. Hem lining so that it is approx. 2 cm (3/4 in) shorter than dress.

BurdaStyle

3/2011 Wedding Gown with Full Skirt