

# 4/2010 Vest

By: burda style magazine

<http://www.burdastyle.com/projects/42010-vest>

---



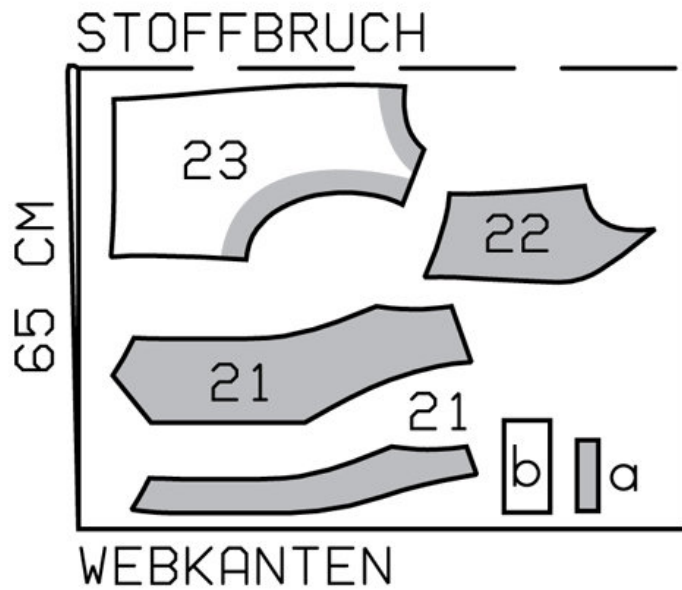
Vest burda style magazine patterns FAQ

## Materials

Gabardine

---

## Step 1 — Preparation



135 36-44

Trace the pattern pieces from the pattern sheet. Trace the front facing from piece 21 as a separate pattern piece.

The buttonholes on piece 21 are marked for size 36. For sizes 38 — 44, mark the top buttonhole the same distance from neck edge as for size 36. The bottom buttonhole is the same for all sizes. Centre the third buttonholes in between.

Seam and hem allowances:

Seams and edges 1.5 cm (5/8 in).

---

## Step 2 — Cutting Out



Gabardine:

21centre front 2x

â— â— front facing 2x

22side front 2x

23back 2x

a) 2 welts, 9 â— 10 â— 11 â— 12 â— 13 cm long, 3 cm (1 1/4 ins) wide, finished width 1.5 cm (5/8 in),

b) 2 pocket pieces, 12 â— 13 â— 14 â— 15 â— 16 cm (4 3/4 â— 5 1/4 â— 5 1/2 â— 6 â— 6 3/8 ins) wide, 7 cm (2 3/4 ins) long (incl. allowance).

Lining: piece 21 minus width of -facing, pieces 22 and 23, and pocket piece.

Interfacing: See pattern layout.

### Step 3 — Front section seams

Stitch front section seams. Press seam allowances open.

### Step 4 — Stitch welt pockets on fronts

Fold welts lengthwise, right side -facing in. Stitch across ends. Turn welts right side out. Stitch welts right sides together with marked joining lines on fronts. Lay one pocket piece on each front, opposite welt, and stitch 1.5 cm (5/8 in) from welt joining seam. This seam should be about 5 mm (3/16 in) shorter at the ends than the welt joining seam. Slash between lines of stitching and clip diagonally toward ends of seams. Do not cut into pocket pieces. Pull pocket pieces to inside and press welts over pocket openings. Work from inside

to stitch remaining -pocket pieces to seam allowances of welt joining seams. Lay small triangles at pocket opening ends to inside and sew in place on pocket pieces. Trim pocket pieces even and stitch together. Stitch pocket lining pieces to seam allowances of welt joining seams. Edgestitch narrow edges of welts in place.

---

### **Step 5 — Stitch centre back seam and shoulder seams.**

Stitch centre back seam and shoulder seams.

---

### **Step 6 — Lining with facing**

Stitch section seams on front lining pieces. Stitch front facings to front lining pieces. Press seam allowances onto lining. Stitch centre back seam of lining. Stitch shoulder seams.

---

### **Step 7 — Face waistcoat**

Pin facings and lining right sides together with waistcoat. Stitch together along front and back hem edges, front edges, neck edges, and armholes. Trim seam allowances, trimming corners diagonally. Clip curves several times. Turn waistcoat right side out by pulling fronts through shoulders, into back.

---

### **Step 8 — Stitch side seams**

Stitch side seams, also stitching a small amount of lining seam at top and bottom. Reach through an open lining seam to pull out other side seam of lining. Stitch remainder of open seam and push back in place. Sew other open seam closed by hand.

---

**BurdaStyle**

4/2010 Vest