

4/2010 Blouson Sleeve Taffeta Coat

By: burda style magazine

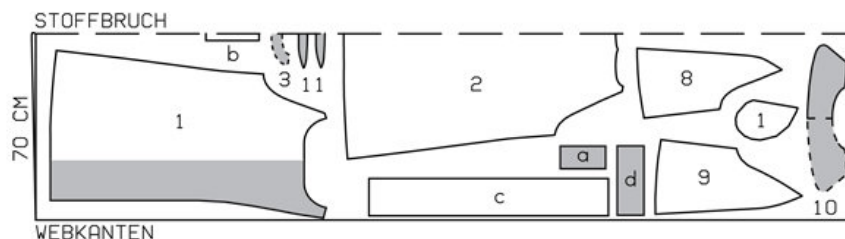
<http://www.burdastyle.com/projects/42010-blouson-sleeve-taffeta-c>

Summer Coat burda style magazine patterns FAQ

Materials

Shot Taffeta

Step 1 — Preparation



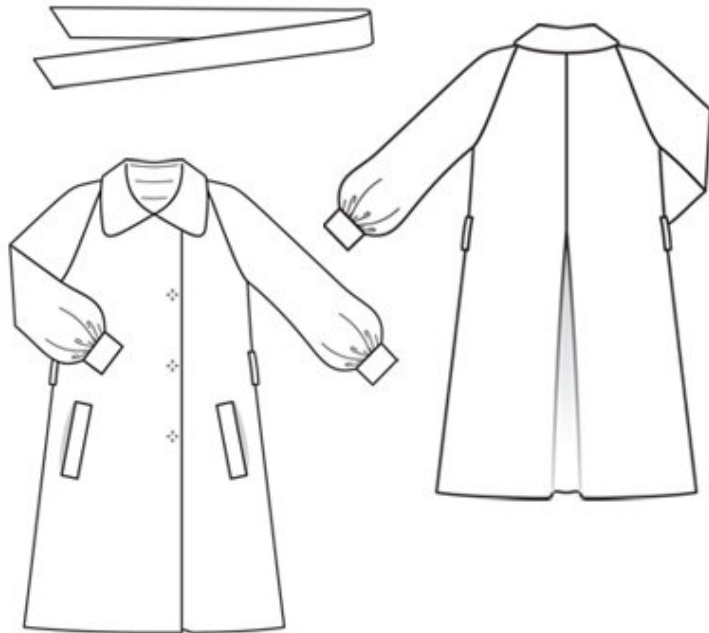
124 36-44

Trace the pattern pieces from the pattern sheet. Trace the pocket piece from piece 1 as a separate pattern piece.

Seam and hem allowances:

Seams and edges 1.5 cm (5/8 in), hem 4 cm (15/8 ins), no allowance at inside edge of facing.

Step 2 — Cutting Out



Shot taffeta:

1— front 2x

1— pocket piece 2x

2— back, on a fold 1x

3— back facing, on a fold 1x

8— front sleeve 2x

9— back sleeve 2x

10— collar, on a fold 2x

11— collar band, on a fold 2x

a) 2 welts, 17 cm (6³/₄ ins) long, 8.5 cm (a generous 3¹/₄ ins) wide, finished width 4.2 cm (approx. 1⁵/₈ ins),

b) 2 belt carriers, a total of 20 cm (8 ins) long, 4 cm (1⁵/₈ ins) wide (incl. allowance),

c) tie belt, a total of 175 — 180 — 185 — 190 — 190 cm (69 — 71 — 7²/₄ — 75 — 75 ins) long, 14 cm (5¹/₂ ins) wide, -finished width 7 cm (2³/₄ ins),

d) 2 sleeve bands, 25 — 26 — 27 — 28 — 29 cm (10 — 10¹/₄ — 10³/₄ — 11¹/₈ — 11¹/₂ ins) long, 10 cm (4 ins) wide, finished width 5 cm (2 ins).

Lining: pocket piece (piece 1).

Interfacing: See pattern layout. Also interface hem allowances. Iron strips of interfacing, about 6 cm (2¹/₂ ins) wide, to wrong side of fabric, over marked welt joining lines. Iron Vilene Bias Tape onto edges of armholes.

Step 3 — Construct welt pockets on fronts

Fold welts lengthwise, right side facing in. Stitch across ends. Turn welts right side out. Stitch welts right sides together with marked joining lines on fronts. Lay one pocket piece on each front, opposite welt, and stitch 1.5 cm (5/8 in) from welt joining seam. This seam should be about 5 mm (3/16 in) shorter at the ends than the welt joining seam. Slash between lines of stitching and clip diagonally toward ends of seams. Do not cut into pocket -pieces. Pull pocket pieces to inside and press welts over pocket openings. Work from inside to stitch remaining pocket pieces to seam allowances of welt joining seams. Lay small triangles at pocket opening ends to inside and sew in place on pocket pieces. Trim pocket pieces even and stitch together. Edgestitch narrow edges of welts in place and stitch again 7 mm (1/4 in) from narrow welt edges. Stitch pocket lining pieces to seam allowances of welt joining seams. Edgestitch narrow edges of welts in place.

Step 4 — Inverted pleat at centre back

For the inverted pleat at centre back, fold back so that pleat lines meet, right side facing in. Stitch pleat from upper edge to arrow marking. Fold pleat in arrow direction and baste to upper edge. Press pleat the length of seam, do not press below the pleat folds.

Step 5 — Side seams, stitching sleeves to armholes, and stitching shoulder and top sleeve seams

Stitch side seams. Stitch underneath sleeve seams. Press seam allowances open. Stitch sleeves to armholes edges. Press seam allowances onto sleeves from upper edges to beginnings of underarm curves. Stitch shoulder seams and top sleeve seams as continuous seams.

Step 6 — Facings

Press hem allowance to inside and sew in place by hand. Lay front self-facings outward and stitch to back facing. Stitch facing to neck edge, from each front edge (fold) to centre front. Leave facings lying right sides together with coat for now.

Step 7 — Collar

Stitch collar band pieces to respective collar pieces. Trim seam allowances and press open. Topstitch close to each side of seams. Stitch collar pieces together along outer edges, building a little extra fullness into top collar, beginning and ending exactly on seam line of joining edge. Turn collar right side out. Lay collar between coat and facing. Stitch undercollar to neck edge and stitch top collar to facing. Press seam allowances open. Turn facing to inside. Pin collar joining seams together. Lay facing in back up again and stitch seam allowances together, close to collar joining seam.

Step 8 — Sleeve bands

Gather lower edges of sleeves to fit sleeve bands. Stitch ends of each sleeve band together. Stitch sleeve bands to lower edges of sleeves. Press seam allowances onto sleeve bands. Fold sleeve bands in half to inside. Turn in inside edge and baste. Topstitch sleeve bands close to joining seams.

Step 9 — Belt carriers

Fold strip for belt carriers lengthwise, right side facing in. Stitch 1 cm (3/8 in) from fold edge. Turn right side out. Top-stitch close to edges. Cut strip into 2 -pieces. Turn ends in for a finished length of 8 cm (3 1/4 ins). Pin belt carriers over side seams as marked. Edgestitch ends in place.

Step 10 — Snaps

Mark placement of 4 snap fasteners on inside of right front, 2 cm (3/4 in) from front edge. Space top fastener 2 cm (3/4 in) from upper edge and bottom fastener 45 cm (17 3/4 ins) above hem edge. Cover fastener pieces with lining fabric. Sew top halves of snaps to inside of right front, taking even -stitches and exiting needle on right side of fabric. Lay right front on left front, matching centres. Mark placement of bottom halves of snaps on left front. Sew bottom halves of snaps in place. Fasten top left front corner to right front with a snap.

BurdaStyle

4/2010 Blouson Sleeve Taffeta Coat