

# 4/2010 Collarless Jacket

By: burda style magazine

<http://www.burdastyle.com/projects/42010-collarless-jacket>

---

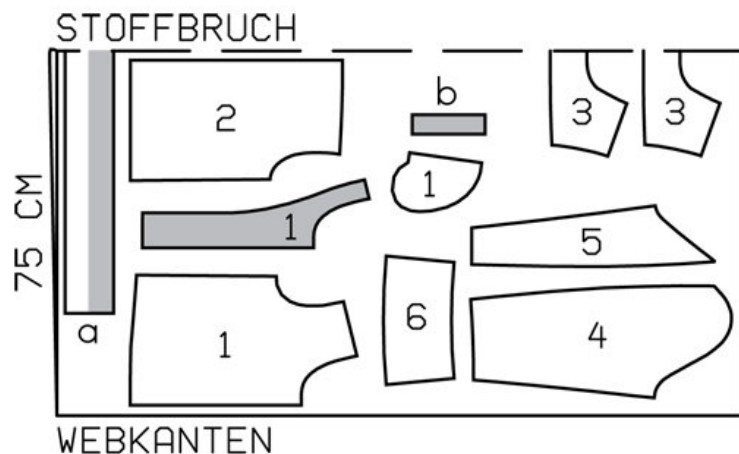
Collarless Jacket burda style magazine patterns FAQ

## Materials

Canvas

---

## Step 1 — Preparation



121 72-55

Trace the pattern pieces from the pattern sheet. Trace the front facing and pocket piece from piece 1 each as a separate pattern piece.

Seam and hem allowances:

Seams and edges 1.5 cm (5/8 in), hem (piece 6) 3 cm (1 1/4 ins).

---

## Step 2 — Cutting Out



Canvas:

1 front 2x

1 front facing 2x

1 pocket piece 2x

2 back 2x

3 yoke, on a fold 2x

4 front sleeve 2x

5 back sleeve 2x

6 lower sleeve piece 2x

a) waistband with 5 cm (2 in) overlap, 104 — 108 — 112 — 116 — 120 cm (41 — 42 1/2 — 44 1/4 — 45 3/4 — 47 1/4 ins) long, 10 cm (4 ins) wide, finished width 5 cm (2 ins),

b) 2 piping strips, 15 cm (6 ins) long, 4 cm (1 1/2 ins) wide, finished width 2 cm (3/4 in).

Lining: cut 2 pocket pieces, to piping joining line.

Interfacing: See pattern layout. Also iron strips of interfacing, about 4 cm (1 5/8 ins) wide, to wrong side of fabric, over pocket markings. Iron Vilene -Bias Tape onto edges of armholes.

### Step 3 — Slashed pockets

Construct slashed pockets with single piping on fronts. Mark an abutting line for welts, 1.5 cm (5/8 in) from each welt joining line (= finished width of welt). Fold welt strips lengthwise, right side facing out, and press. Baste doubled welt strips to welt joining line so that fold edge of welt meets abutting line and open lengthwise edges lie between pocket lines. Stitch welt in place along welt joining line. Stitch one pocket piece to each pocket piece joining line. Slash between lines of stitching and clip diagonally toward ends of seams, not cutting into welts or pocket -pieces. Lay welts into pocket opening and pull pocket pieces to

inside. Stitch remaining pocket pieces to seam allowances of welt joining seams. Fold small triangles of fabric at ends of pocket openings to inside and stitch to welt and pocket pieces, from seam end to seam end. Trim pocket pieces even and stitch together. Mark abutting line for piping 2 cm (3/4 in) from joining line. Stitch pocket lining pieces to seam allowances of piping joining seams.

---

## **Step 4 — Stitch centre back seam and side seams**

Stitch centre back seam and stitch side seams. Press seam allowances open.

---

## **Step 5 — Zipper**

Pin zip face down on right front edge (right fabric side) so that teeth of zip lie on garment piece and zip tape lies on seam allowance. Leave zip extending at neck edge. Bottom end of zip should meet seam line on lower edge of front. Stitch zip tape in place. Pin facings right sides together with fronts. Stitch along front edges. Turn facings to inside and press edges. Baste facings in place and baste to neck edge, next to seam allowance. Lay right front on left front, matching centres. Pin free zip tape to left front. Open zip. Pin twill tape to left front, over zip. Edgestitch both edges of tape in place, not catching pocket piece.

---

## **Step 6 — Yokes**

Pin one yoke to upper back edge from outside and pin second yoke to edge from inside. Stitch yokes in place and press up. Stitch outer yoke to upper edges of fronts. Press seam allowances onto yoke. Turn in inside yoke and baste to joining seams. Topstitch yoke close to joining seams. Baste open edges of yoke together, basting next to seam allowance at neck edge.

---

## **Step 7 — Twill tape**

Trim away seam allowance on neck edge and trim zip tapes. Use pliers to remove top 2 — 3 teeth of zip. Fold remaining twill tape to half the width and press, easing fold edge and stretching open edges of tape. Lay twill tape over neck edge and pin. Turn in ends of tape at front edges. Edgestitch tape in place and stitch across ends. Topstitch 3.5 cm (1 1/2 ins) and 4.2 cm (a good 15/8 ins) from neck edge.

---

## **Step 8 — Waistband**

Stitch waistband to lower edge of jacket, with overlap extending at the right. Press seam allowances of joining seam and of other long edge of waistband onto waistband. Fold waistband lengthwise. Stitch across left end of waistband. At right, lay seam allowances of overlap up again and stitch along upper edge of overlap and right end of waistband. Turn waistband right side out. Sew inside edge in place by hand. Topstitch waistband close to all edges.

---

## **Step 9 — Sleeves**

Stitch back sleeve seams to slit mark. Clip seam allowance of back sleeve pieces 1 cm (3/8 in) above sleeve vents. Press seam allowances onto front sleeves. Topstitch front sleeves along seams. Stitch lower sleeve seams. Stitch lower sleeve pieces to sleeves. Topstitch sleeves close to seam and 7 mm (1/4 in) from seam. Press edges of vents. Stitch zips under edges of vents so that zip teeth are covered. Press sleeve hem allowances to inside, turn in and stitch.

---

## Step 10 — Sleeve Caps

Set in sleeves, easing sleeve caps.

---

**BurdaStyle**

4/2010 Collarless Jacket